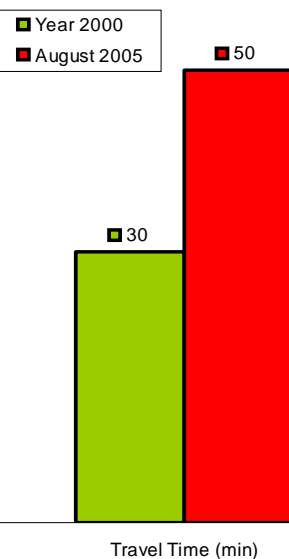


**Closed Villages Project - Villages isolated from their natural centers**

Palestinians without permits (the large majority of the population)



Comparing situations Pre-Intifada and August 2005

**Hebron 2 cluster**

The villages of this cluster are inhabited by members of the same Bedouin tribe. Ar Ramadin checkpoint, established in October of 2005, splits the community prohibiting members of the same family from visiting each other at will.

The checkpoint also impedes access to Ad Dahariya, the main urban center.

Village	Population
Ar Ramadin	2866
'Arab al Fureijat	397
Anab al Kabir	287
<b>Total Population:</b>	<b>3550</b>

**Closures**

- Checkpoint
- Earthmound
- Partial Checkpoint
- Road Gate
- Roadblock
- Under / Overpass
- Constructed Barrier
- Projected Barrier
- Under Construction

**Prohibited Roads**

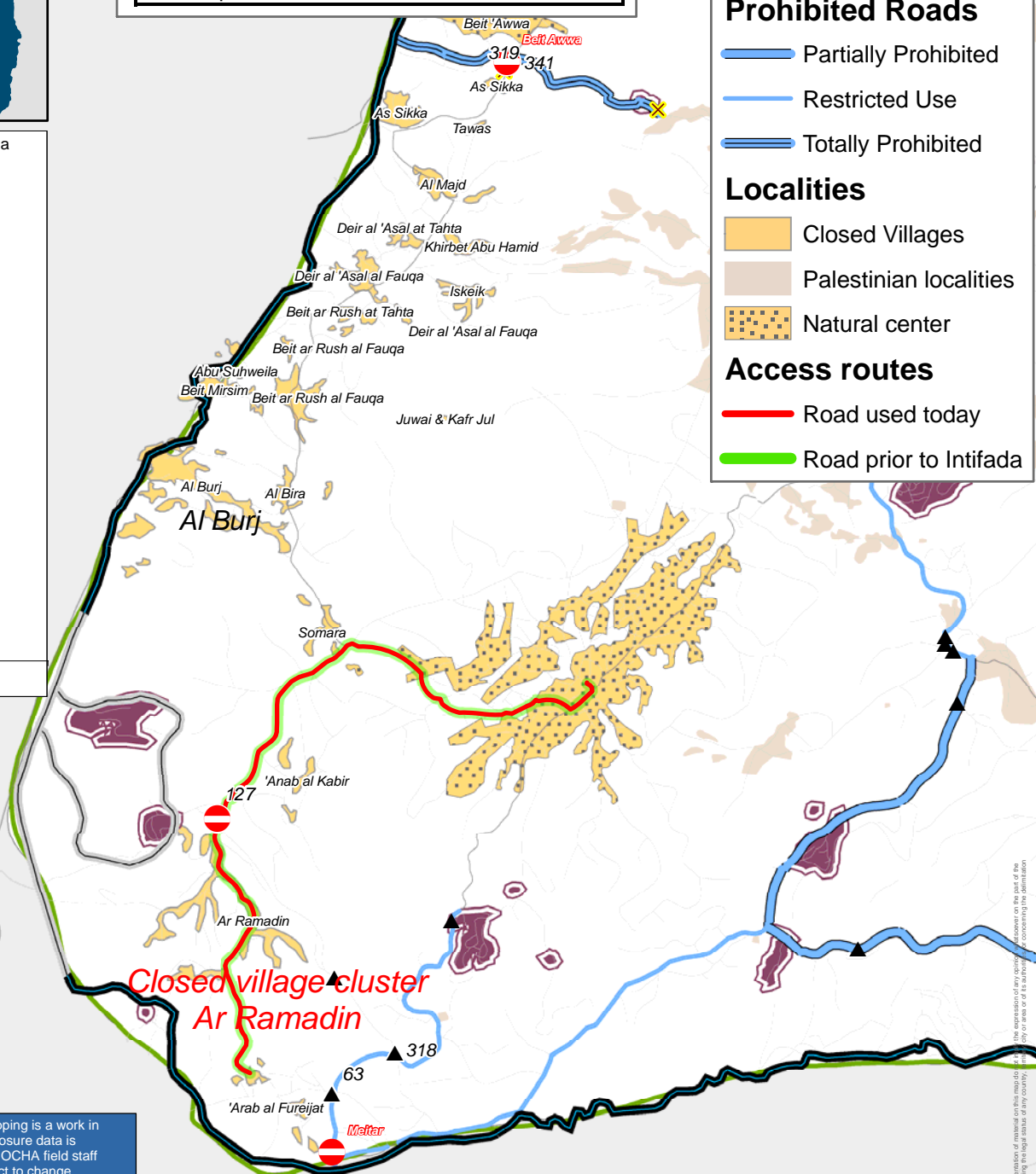
- Partially Prohibited
- Restricted Use
- Totally Prohibited

**Localities**

- Closed Villages
- Palestinian localities
- Natural center

**Access routes**

- Road used today
- Road prior to Intifada



Closure mapping is a work in progress. Closure data is collected by OCHA field staff and is subject to change. Maps will be updated regularly. Cartography: OCHA Humanitarian Information Centre - October 2005. Base data: OCHA update August 2005.

For comments contact <ochaopt@un.org>  
Tel. +972 (02) 582-9962 <http://www.ochaopt.org>