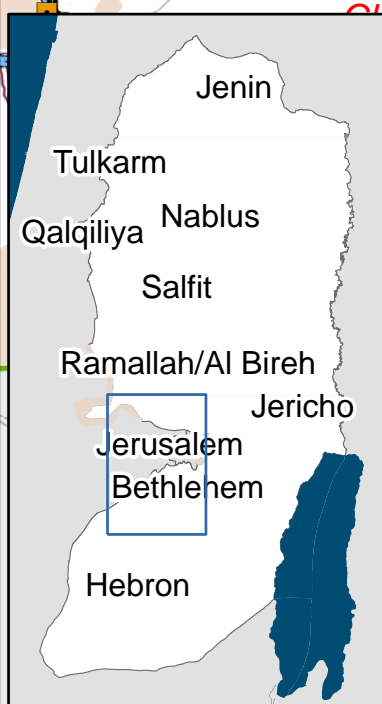


**Closed Villages Project - Villages isolated from their natural centers**

Palestinians without permits (the large majority of the population)

**Bethlehem 2 cluster**

In 2000, Palestinians from this village accessed Bethlehem with roads 354, 367 and 60. In 2005, all access south is blocked and 367 and 60 are prohibited to Palestinian traffic.

**This village is inaccessible by car**

Village	Population
Al Jab'a	929
<b>Total Population:</b>	<b>929</b>

Comparing situations Pre-Intifada and August 2005

- Year 2000
- August 2005

**INACCESSIBLE BY CAR**

■ 25

Travel Time (min)

**Closures**

- ⊘ Checkpoint
- ▲ Earthmound
- ⊕ Partial Checkpoint
- ✕ Road Gate
- Roadblock
- P Under / Overpass
- Constructed Barrier
- Projected Barrier
- Under Construction

**Prohibited Roads**

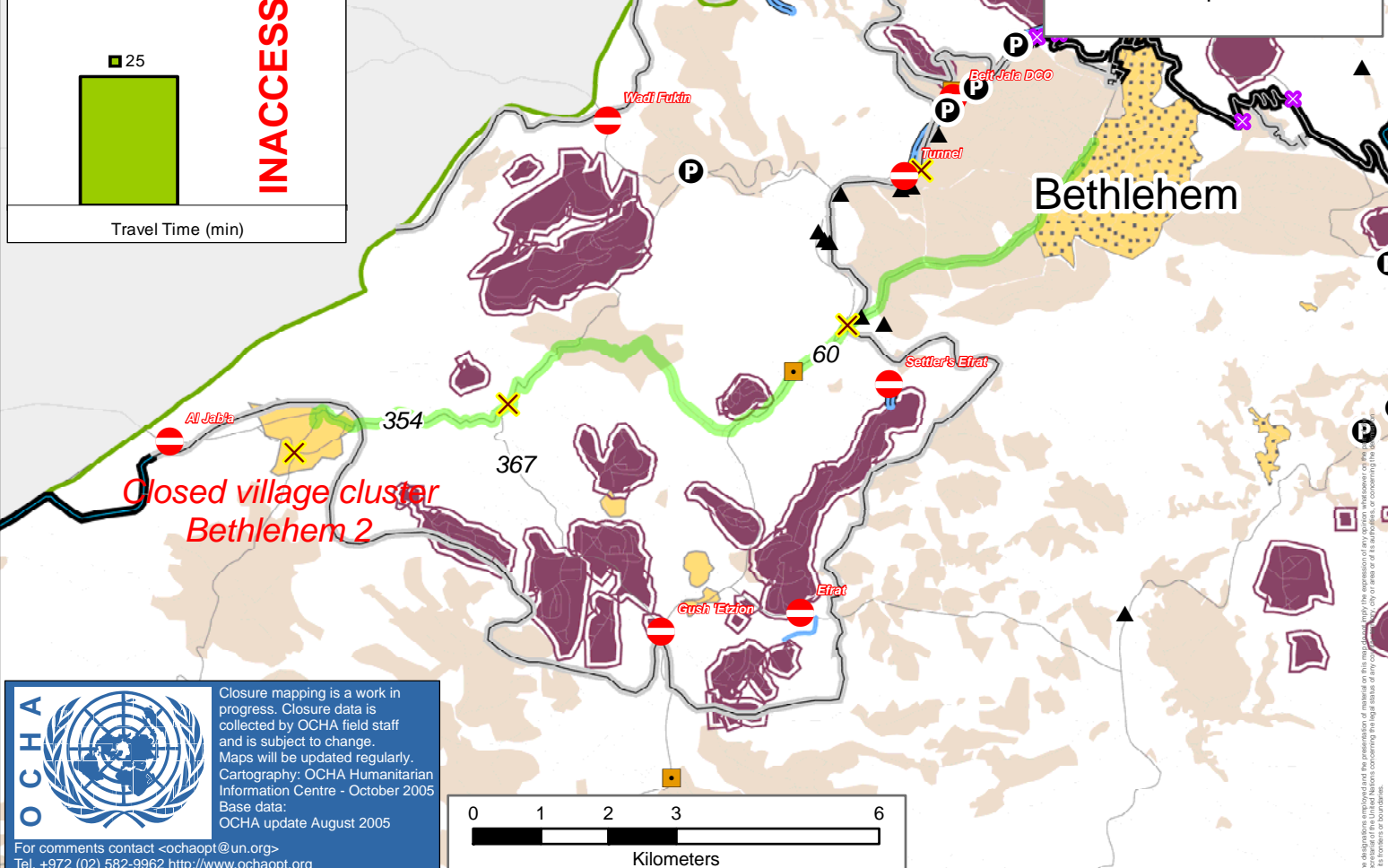
- Partially Prohibited
- Restricted Use
- Totally Prohibited

**Localities**

- Closed Villages
- Palestinian localities
- Natural center

**Access routes**

- Road used today
- Road prior to Intifada



Closure mapping is a work in progress. Closure data is collected by OCHA field staff and is subject to change. Maps will be updated regularly. Cartography: OCHA Humanitarian Information Centre - October 2005. Base data: OCHA update August 2005.

For comments contact <ochaopt@un.org>  
Tel. +972 (02) 582-9962 <http://www.ochaopt.org>