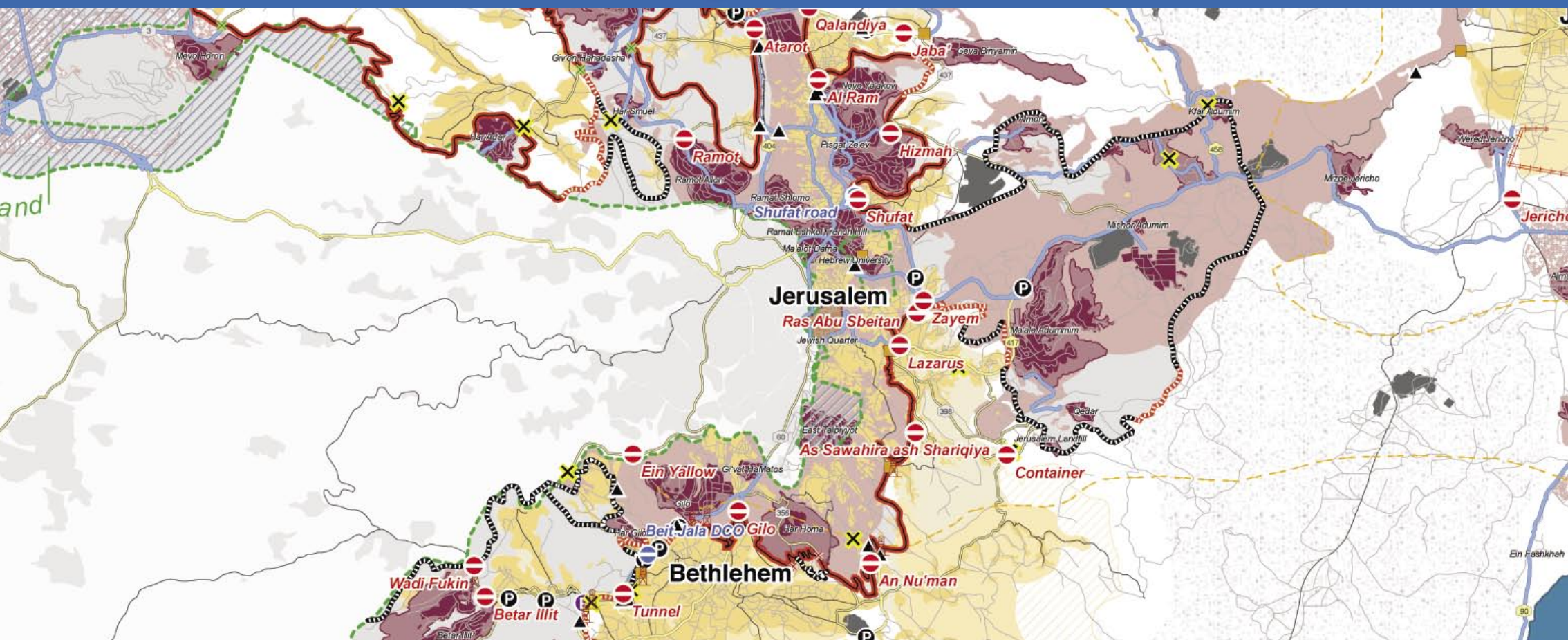




United Nations
Office for the Coordination of Humanitarian Affairs (OCHA)
occupied Palestinian territory

WEST BANK & GAZA STRIP CLOSURE MAPS

April 2007



CLOSURE MAPS

INDEX



West Bank 1



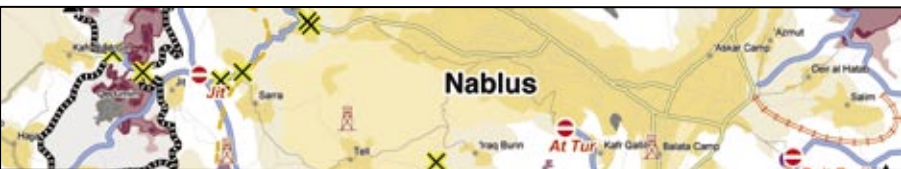
West Bank
Barrier Route Projections 2



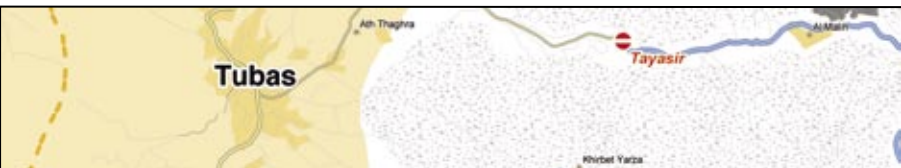
Jenin 3



Nablus 4



Tubas 5



Jericho 6



Tulkarm 7



Qalqiliya 8



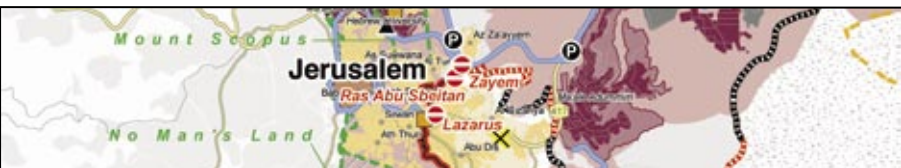
Salfit 9



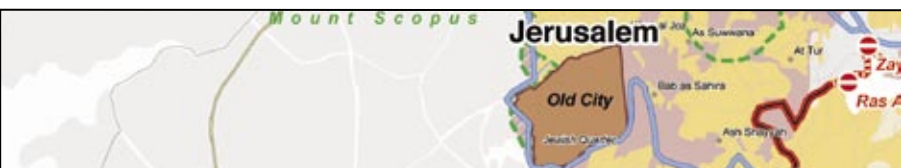
Ramallah 10



Jerusalem 11



East Jerusalem 12



Bethlehem 13



Hebron 14



Hebron Old City 15



Gaza Strip Access Map 16



West Bank Closures

April 2007

Physical Closures

- Checkpoint
- Partial Checkpoint
- Road Gate
- Observation Tower
- Earthmound
- Roadblock
- Tunnel
- Planned Tunnel
- Earth Wall
- Road Barrier
- Trench

West Bank Barrier

- Constructed
- Under Construction
- Planned Route
- Agricultural Gate¹
- Military Gate¹

¹Planned Barrier - path based on Israeli Government map, published April 30 2006 and ICP land seizure orders, Ministry of Defence - Seam Zone Authority.

Constructed Barrier - path extracted from satellite imagery and verified by field survey as of April 2007.

²Forty-five of the eighty-four Barrier gates are open to Palestinians with appropriate permits.

Access

Closed and Restricted Areas

- Israeli military base
- Access is prohibited
- Israeli closed military area
- Access is prohibited
- Existing and projected 'closed areas' behind the Barrier
- Access is limited to permit holders

Israeli Settlements

- Outpost
- Land cultivated by settlers
- Settlement municipal area
- Settlement built-up and outer limit

Palestinian Areas

- Built-up

Roads

- Prohibited or Restricted Palestinian vehicle use
- Main road
- Other Road

Oslo Agreement

- Area A¹
- Area B²
- Special Case (H2)³
- Intended Nature Reserve
- Area C⁴

- 1 - Full Palestinian civil and military control (Effective in Jericho only)
- 2 - Full Palestinian civil control and joint Israeli-Palestinian military control
- 3 - Hebron Agreement
- 4 - Full Israeli civil and military control

Closed and Restricted Areas for Palestinians

- 2002 Service Commandments
- 1954 - 1985 Oslo Accords timing zone
- Restricted and Prohibited Areas
- West Bank Barrier
- Planned and Constructed
- Green Line



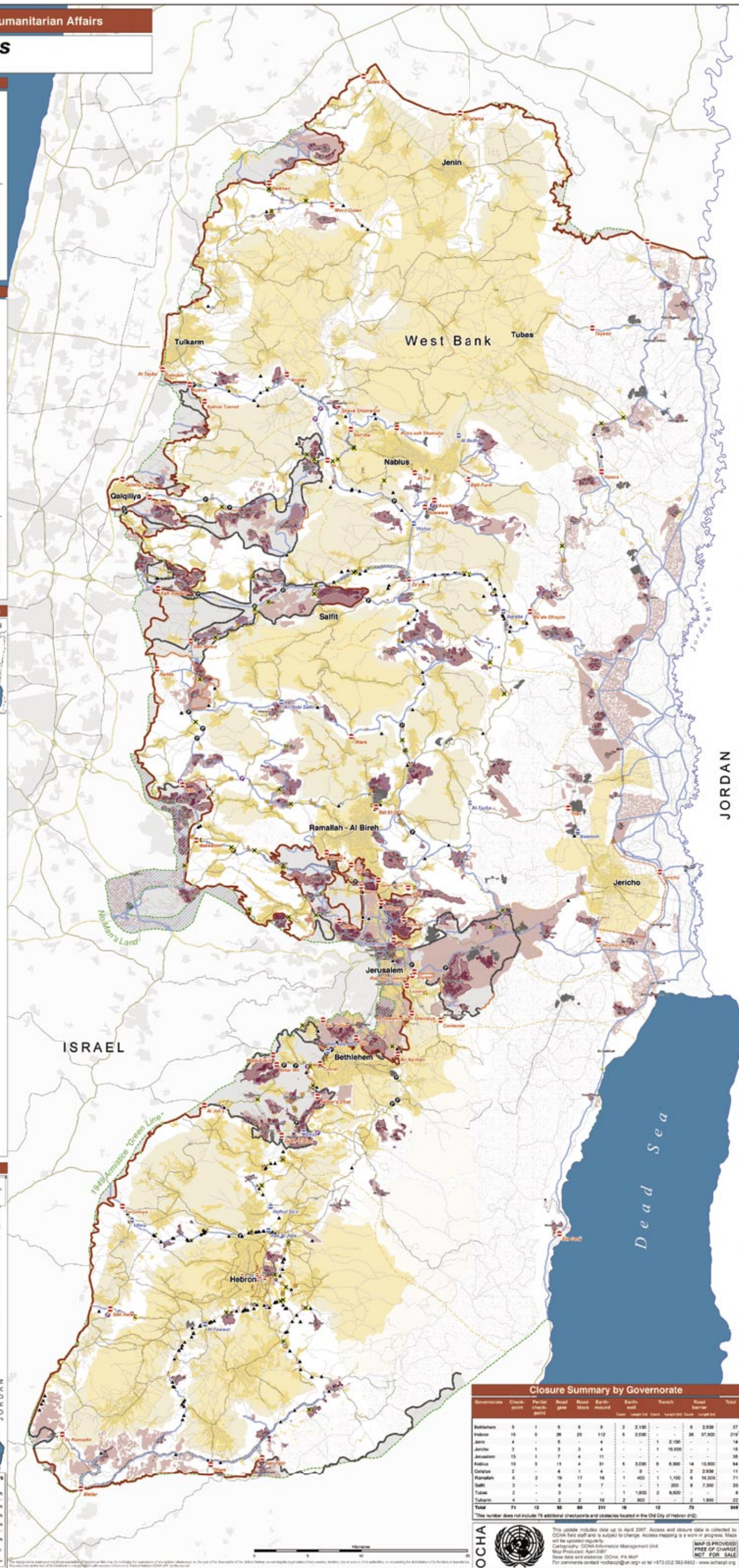
West Bank Barrier - Sep 2006 to March 2007

- Barrier constructed by Sep 2006
- Barrier constructed from Sep 2006 to March 2007
- Barrier under construction in March 2007
- Barrier planned route
- Area under full Israeli control
- Oslo Areas A and B, under full Israeli control



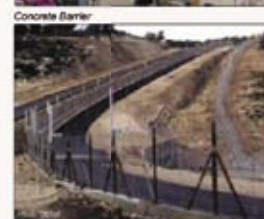
The Barrier in numbers
(as of March 2007)

Total Length	703 km
Completed	413 km
Under Construction	62 km
Planned	228 km
Constructed since October 2006	7 km
Closed Area	575 km ²
% of Area	15.1 %



The West Bank Barrier

A complex series of concrete walls, electronic fences, observation towers, trenches, patrol roads and razor wire, used to control Palestinian pedestrian and vehicular movement.



BARRIER GATE - Allows restricted movement through the West Bank Barrier to Palestinian lands and to Israel. Permits are required for Palestinians to pass through a gate.

Closure

A policy of physical barriers and permit requirements used to control Palestinian pedestrian and vehicular movement.



CHECKPOINT - A barrier manned by IDF and/or Border Police with observation towers and other physical blocks used to control pedestrian and vehicular access.

PARTIAL CHECKPOINT - An established checkpoint operating periodically.



OBSERVATION TOWER - An elevated military tower to monitor/control Palestinian pedestrian and vehicular access.



EARTH MOUND - A mound of rubble, dirt and/or rocks used to obstruct vehicle access.



TUNNEL - Passage under road restricted for Palestinian use.



ROADBLOCK - A series of 1 metre concrete blocks used to obstruct vehicle access.



TRENCH - A ditch used to prevent vehicle crossing.



ROAD GATE - A metal gate, often manned by IDF, used to control movement along roads.



ROAD BARRIER - Secures the passage of Israeli settlers on restricted roads. These fences impede Palestinians from traveling over major roads leading to the main cities.

The Permit System



The permit system is complex and applied differently from region to region. A permit eases travel and reduces the risk of being turned back at a checkpoint. Permits are necessary for crossing specific checkpoints, according to the Jordan Valley, the 'closed area' between the Green Line and the Barrier and for entering East Jerusalem.

Closure Summary by Governorate

Governorate	Checkpoint	Partial Checkpoint	Road Gate	Road Block	Earth Mound	Earth Wall	Trench	Road Barrier	Total
Bethlehem	5	1	5	8	9	2	2,130	5	2,150
Hebron	15	5	25	113	8	2,000	1	37,300	240
Jenin	4	-	5	-	4	-	1	2,100	14
Nablus	3	1	3	3	4	-	1	18,000	16
Jerusalem	13	1	7	4	11	-	-	-	38
Nabatieh	10	5	11	4	31	8	3,000	8,300	14
Qalqilya	2	-	4	1	4	-	5	-	2,308
Ramallah	6	8	18	13	19	1	400	1,100	8
Salfit	3	-	6	3	7	-	1	200	2,300
Tubas	2	-	3	-	-	1	1,800	4,800	8
Tulkarm	4	-	2	2	19	2	800	-	2,100
Total	71	13	55	60	211	18	12	73	549

*This number does not include 75 additional checkpoints and obstacles located in the Old City of Hebron (DQ).



This update includes data up to April 2007. Access and closure data is collected by OCHA field staff and is subject to change. Access mapping is a work in progress. Maps will be updated regularly. Copyright: OCHA Information Management Unit. Map Produced: April 2007. Data Date and Version: OCHA, PA Map. For comments contact: ocdac@ocha.org or tel +972 (02) 583-6862 - www.ochaopt.org

MAP IS PROVIDED FREE OF CHARGE. NOT FOR SALE.



On 30 April 2006, the Israeli cabinet approved a revised route of the West Bank Barrier. The previous map was issued on 20 Feb 2005.

The revisions include:

- The Emanuel and Ariel settlement groups are split into two "fingers".
- Together these "fingers" surround more than 25,000 Palestinians on three sides with one access route on the east side of the Barrier.
- The Ariel finger encircles three villages: Deir Ballut, Rafat and Az Zawiya.
- The Alfe Menashe settlement is reduced in size. Sections of the completed Barrier will be dismantled and rebuilt placing three Palestinian villages and some of their adjacent lands on the east side of the Barrier.
- The route is moved approximately one and a half kilometres further north from Road 465 and incorporates fewer olive groves and land from Rantis village.
- The route is closer to Ofarim settlement, allowing 'Abud village residents to remain connected to their olive groves.
- The new route removes Beit Iksa village and its surrounding lands from the Jerusalem side of the Barrier and places it within the Biddul' Beit Sunk group of West Bank villages. This area is surrounded by the Barrier on three sides and Road 443 to the north.
- Al Walaja village will be encircled by the Barrier. The route will incorporate most of all the village infrastructure, however, it will isolate the village from its farm land.
- Al Jaba' will be in the Gush Etzion settlement group.
- Several sections of the route that were planned to be on the Green Line have been moved north, inside the West Bank.
- The "bubble" created by the Barrier around Eshkolot settlement is reduced; the quarry will remain on the West Bank side of the Barrier.

Cartography and Barrier Themes: OCHA-oPI IMU
Map produced April 2007
Base data: MoPIC (2000) updates OCHA (2007)
For comments contact <ochaopi@un.org>
Tel. +972 (02) 582-9902
http://www.ochaapi.org



The Barrier's total length is 712 km, more than twice the length of the 1949 Armistice Line (Green Line) between the West Bank and Israel. Twenty percent (20%) of the Barrier's length runs along the Green Line.

Area Affected

The total area located between the Barrier and the Green Line is 10.17% of the West Bank and East Jerusalem.

(142,130 acres or 57,518 hectares)

Populations Affected

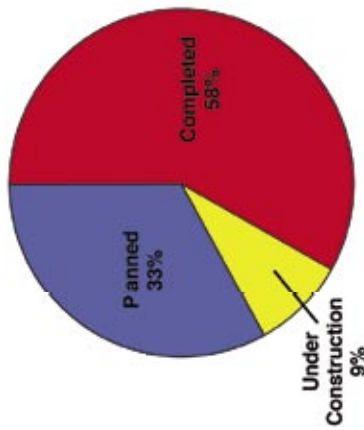
If the Barrier is completed based on the current route, 60,500 Palestinians living in 42 villages will reside in areas between the Barrier and the Green Line, not including East Jerusalem residents.

Of these, 12 villages and about 31,400 Palestinians are particularly affected as they will be completely encircled by the Barrier.

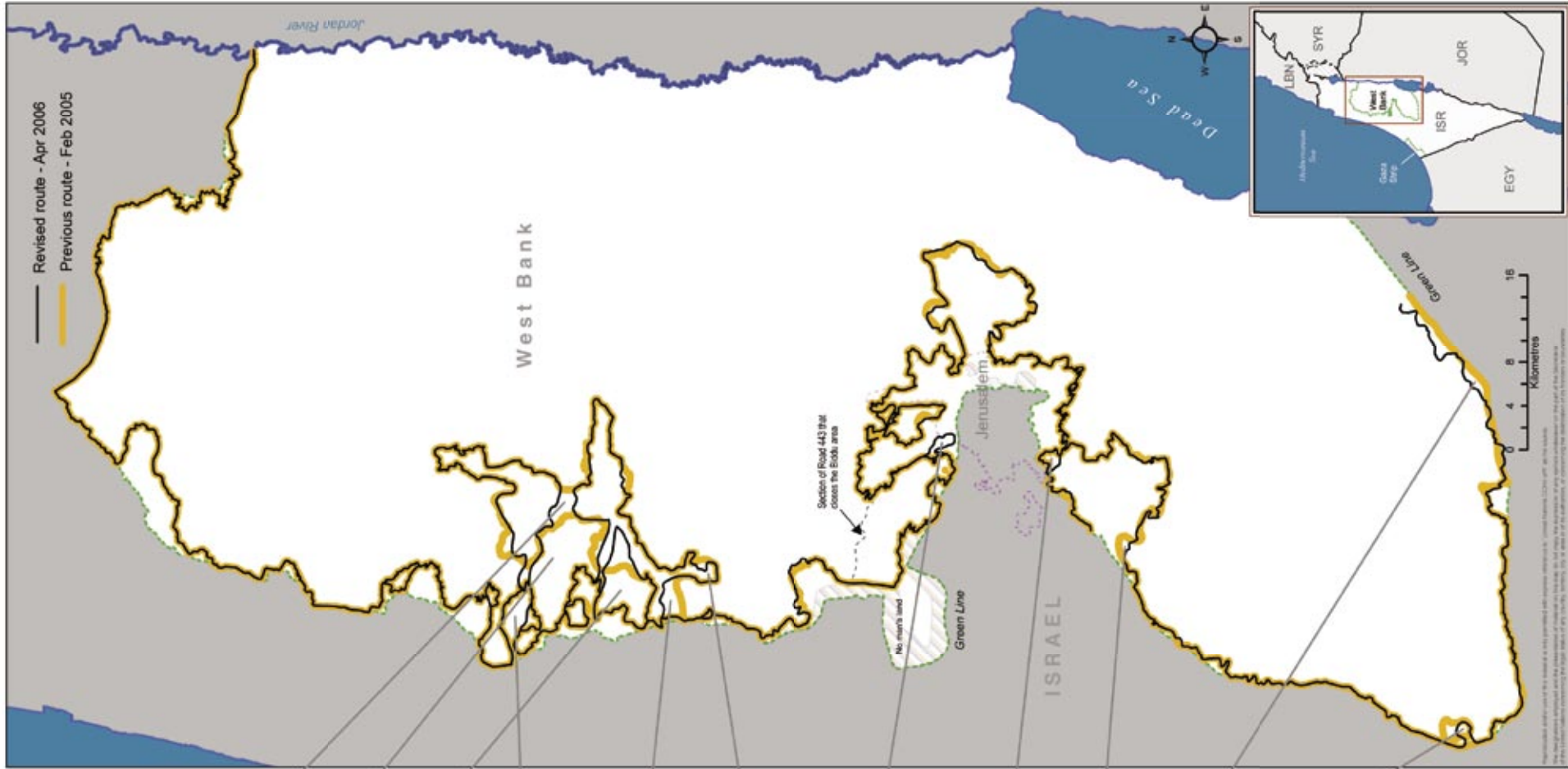
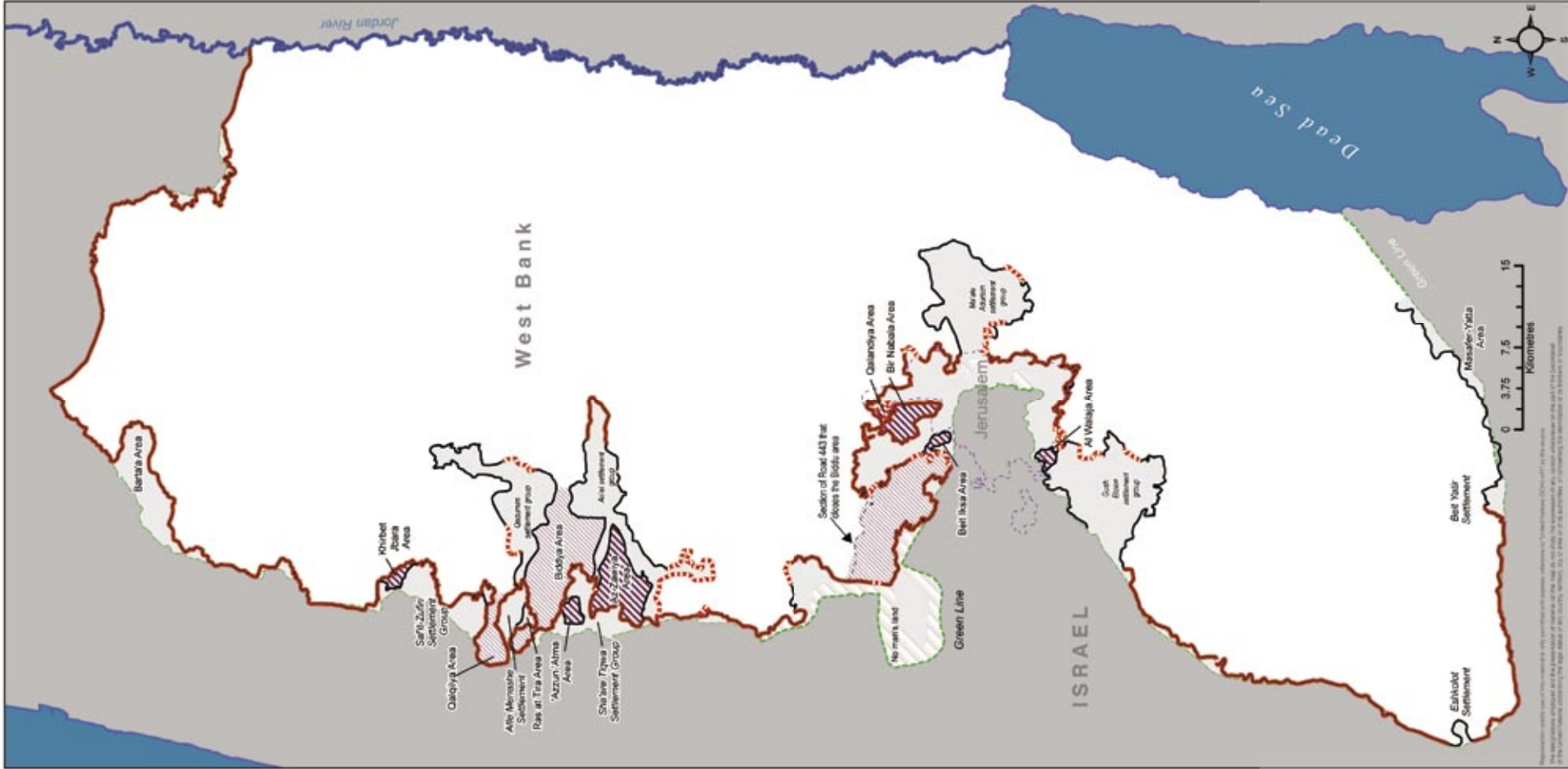
An additional, 124,300 Palestinians living in 28 villages will be located on the east side, but surrounded by the Barrier on three sides and controlled on the fourth with an associated physical structure.

Barrier Route

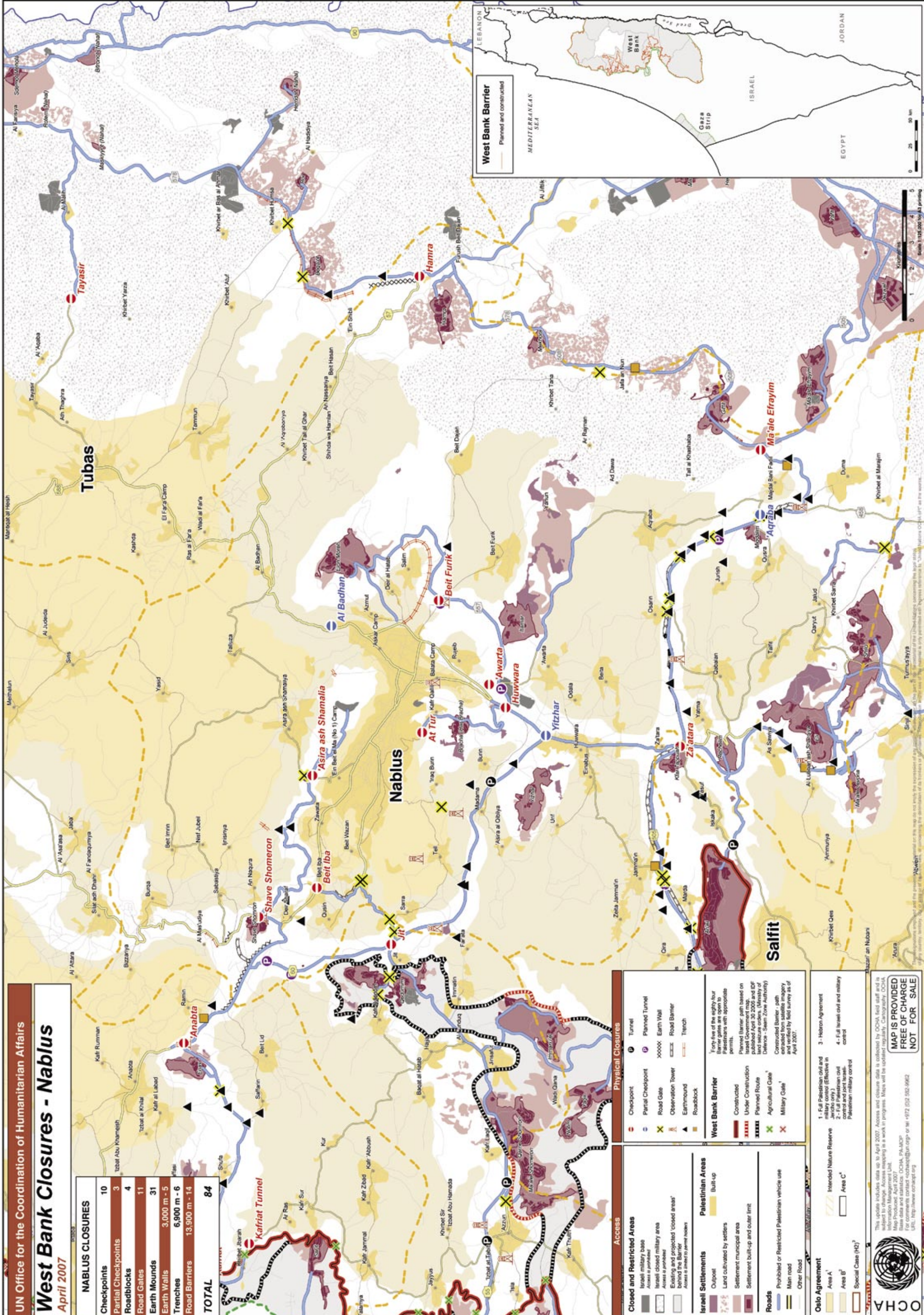
- Completed - 413 km
- Under construction - 62 km
- Planned - 237 km



Cartography and Barrier Themes: OCHA-oPI IMU
April 2007
Base data: MoPIC (2000) updates OCHA (2007)
For comments contact <ochaopi@un.org>
Tel. +972 (02) 582-9902
http://www.ochaapi.org





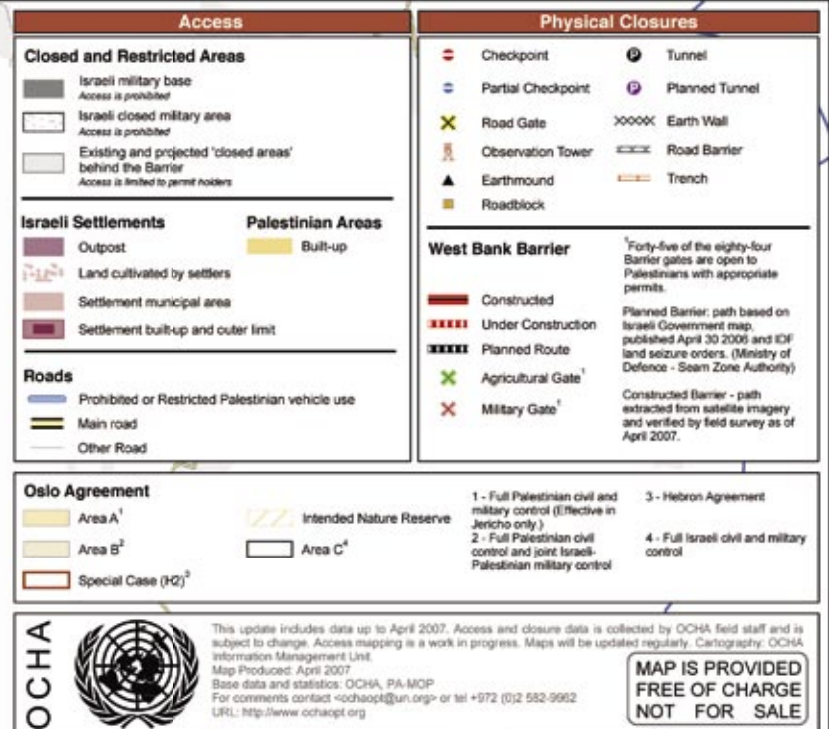


West Bank Closures - Tubas

April 2007

TUBAS CLOSURES

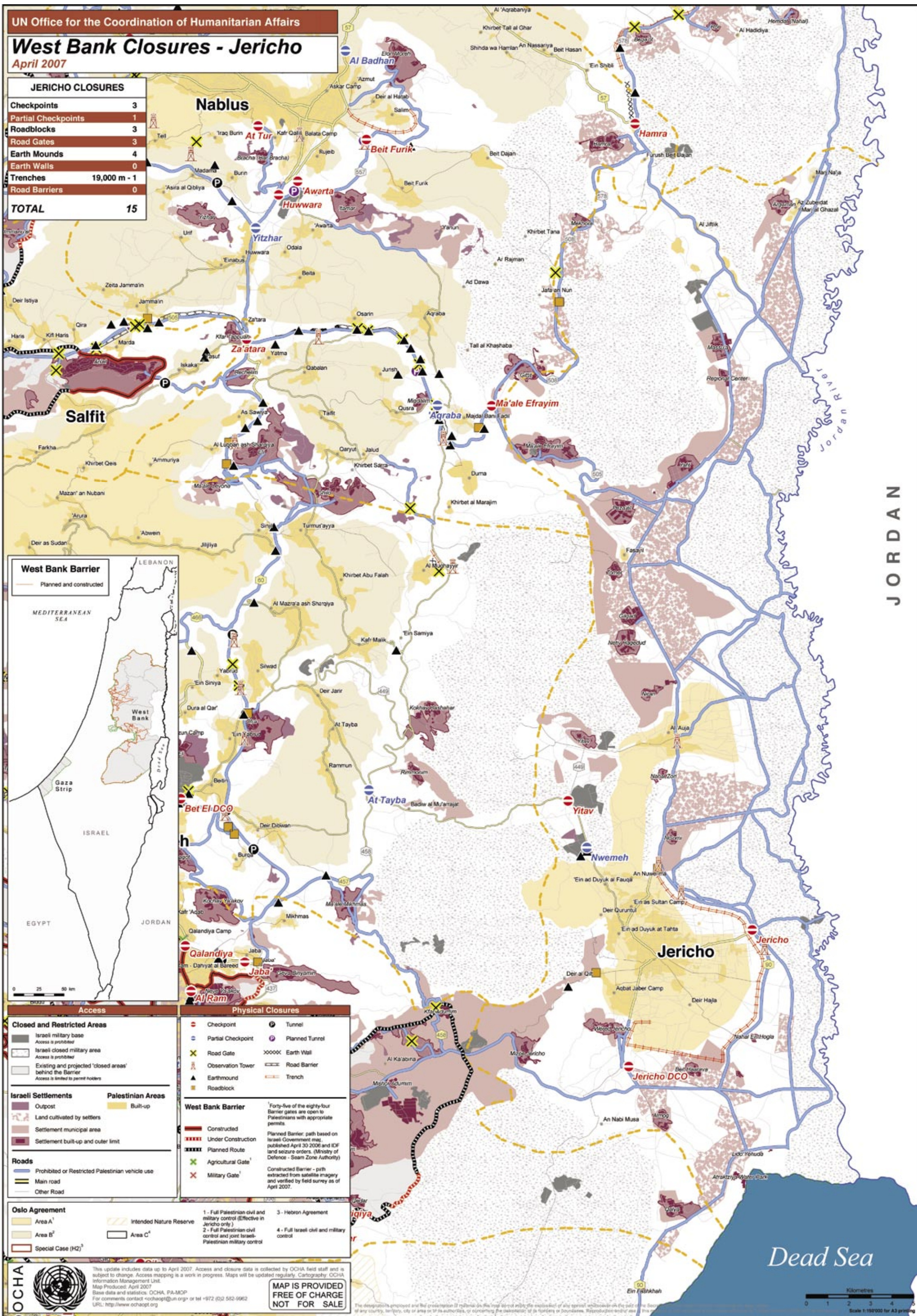
Checkpoints	2
Partial Checkpoints	0
Roadblocks	0
Road Gates	3
Earth Mounds	0
Earth Walls	1,800 m - 1
Trenches	6,600 m - 2
Road Barriers	0
TOTAL	8



The designations employed and the presentation of material on this map do not imply the expression of any opinion of the United Nations Secretariat concerning the legal status of any country, territory, city or area or of its authorities, or concerning the delimitation of its frontiers or boundaries. This map is only provided with a general reference to 'United Nations OCHA' as the source.

Jordan

JERICHO CLOSURES		
Checkpoints		3
Partial Checkpoints		1
Roadblocks		3
Road Gates		3
Earth Mounds		4
Earth Walls		0
Trenches	19,000 m - 1	
Road Barriers		0
TOTAL		15



This update includes data up to April 2007. Access and closure data is collected by OCHA field staff and is subject to change. Access mapping is a work in progress. Maps will be updated regularly. Cartography: OCHA Information Management Unit.
Map Produced: April 2007
Base data and statistics: OCHA, PA-MOP
For comments contact: cochoapt@un.org or tel +972 (02) 582-9962
URL: <http://www.ochaopt.org>

**MAP IS PROVIDED
FREE OF CHARGE
NOT FOR SALE**

MAP IS PROVIDED
FREE OF CHARGE
NOT FOR SALE

The designations employed and the presentation of material in this map do not imply the expression of any opinion whatsoever on the part of the Secretariat of the Organization of American States concerning the legal status of any country, territory, city or area or of its authorities, or concerning the delimitation of its frontiers or boundaries. Reproduction in whole or in part is permitted.

West Bank Closures - Tulkarm

April 2007

TULKARM CLOSURES

Checkpoints	4
Partial Checkpoints	0
Roadblocks	2
Road Gates	2
Earth Mounds	10
Earth Walls	800 m - 2
Trenches	0
Road Barriers	1,800 m - 2
TOTAL	22

Access**Closed and Restricted Areas**

- Israeli military base
Access is prohibited
- Israeli closed military area
Access is prohibited
- Existing and projected 'closed areas' behind the Barrier
Access is limited to permit holders

Israeli Settlements

- Outpost
- Land cultivated by settlers
- Settlement municipal area
- Settlement built-up and outer limit

Palestinian Areas

- Built-up

Roads

- Prohibited or Restricted Palestinian vehicle use
- Main road
- Other Road

Oslo Agreement

- Area A¹
- Area B²
- Special Case (HQ)³
- Intended Nature Reserve
- Area C⁴

Physical Closures

- Checkpoint
- Partial Checkpoint
- Road Gate
- Observation Tower
- Earthmound
- Roadblock
- Tunnel
- Planned Tunnel
- Earth Wall
- Road Barrier
- Trench

West Bank Barrier

- Constructed
 - Under Construction
 - Planned Route
 - Agricultural Gate¹
 - Military Gate¹
- ¹Forty-five of the eighty-four Barrier gates are open to Palestinians with appropriate permits.
- Planned Barrier: path based on Israeli Government map, published April 30 2006 and ICJ land seizure orders (Ministry of Defence - Seam Zone Authority)
- Constructed Barrier: path extracted from satellite imagery and verified by field survey as of April 2007.

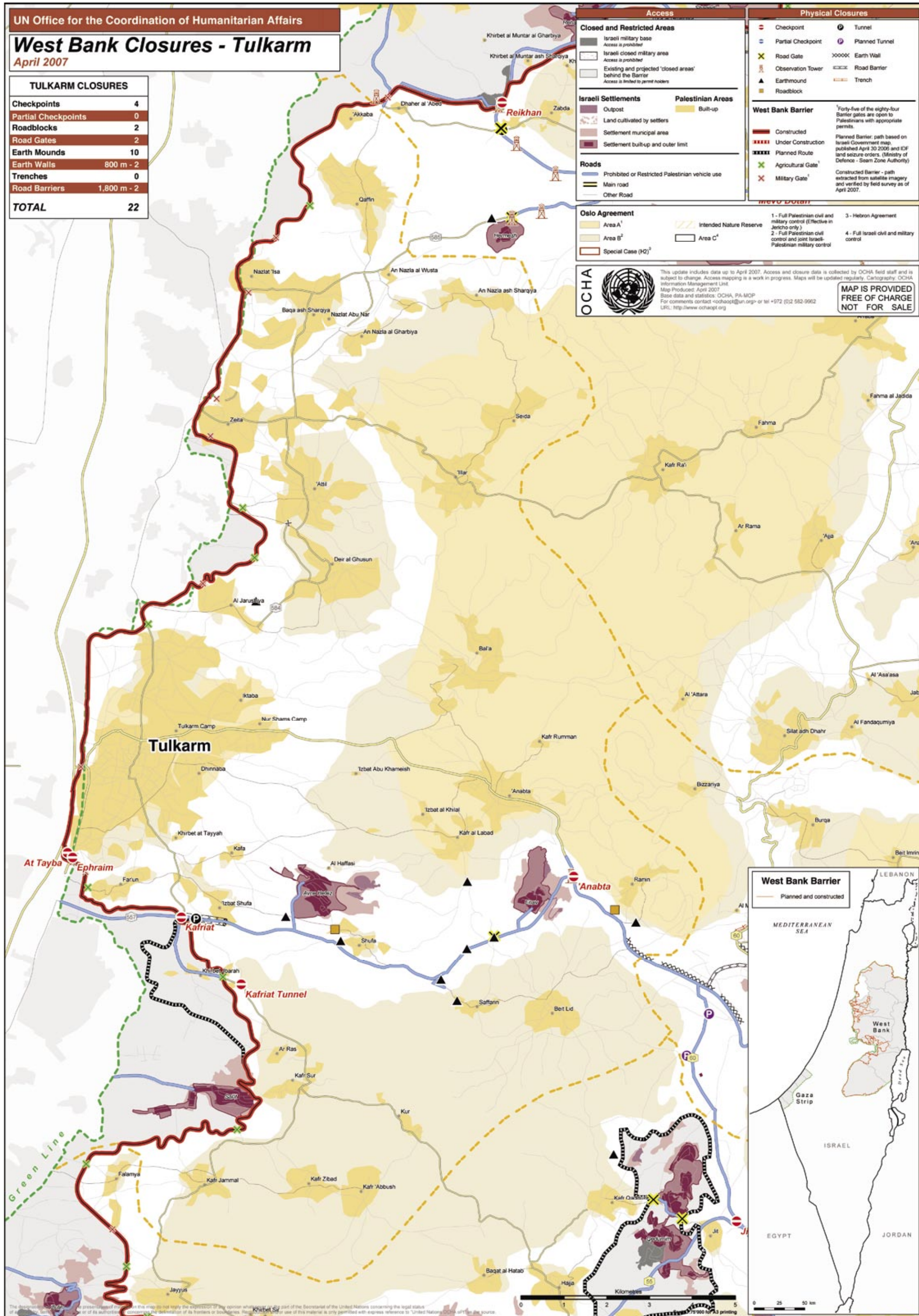
- 1 - Full Palestinian civil and military control (Effective in Jericho only)
- 2 - Full Palestinian civil control and joint Israeli-Palestinian military control
- 3 - Hebron Agreement
- 4 - Full Israeli civil and military control

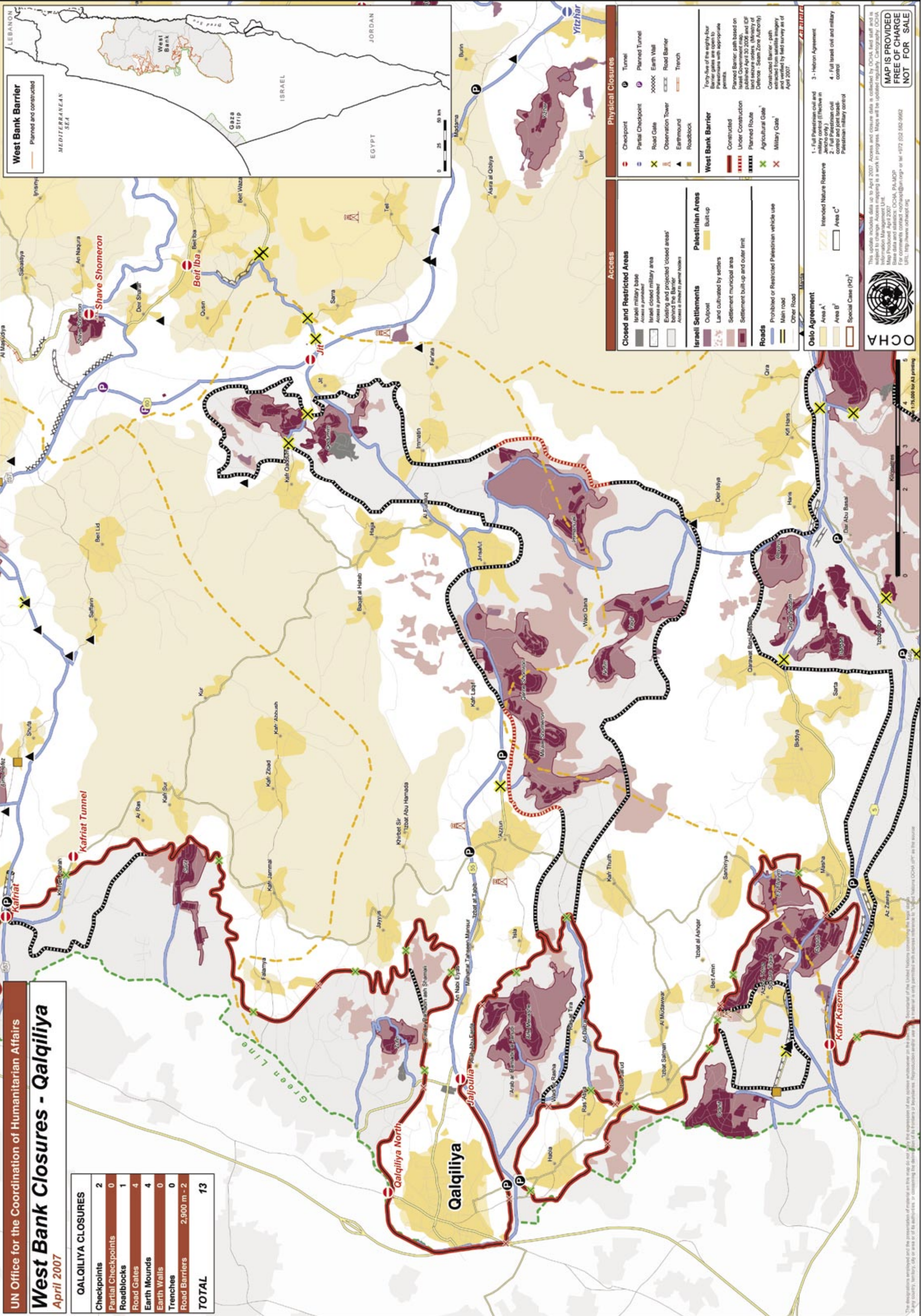
OCHA



This update includes data up to April 2007. Access and closure data is collected by OCHA field staff and is subject to change. Access mapping is a work in progress. Maps will be updated regularly. Cartography: OCHA Information Management Unit.
Map Produced: April 2007
Base data and statistics: OCHA, PA-MOP
For comments contact <ochaopt@un.org> or tel +972 (0)2 582-9952
URL: <http://www.ochaopt.org>

MAP IS PROVIDED
FREE OF CHARGE
NOT FOR SALE






UN Office for the Coordination of Humanitarian Affairs

West Bank Closures - Qalqiliya

April 2007

QALQILIYA CLOSURES

Checkpoints	2
Partial Checkpoints	0
Roadblocks	1
Road Gates	4
Earth Mounds	4
Earth Walls	0
Trenches	0
Road Barriers	2,900 m - 2
TOTAL	13

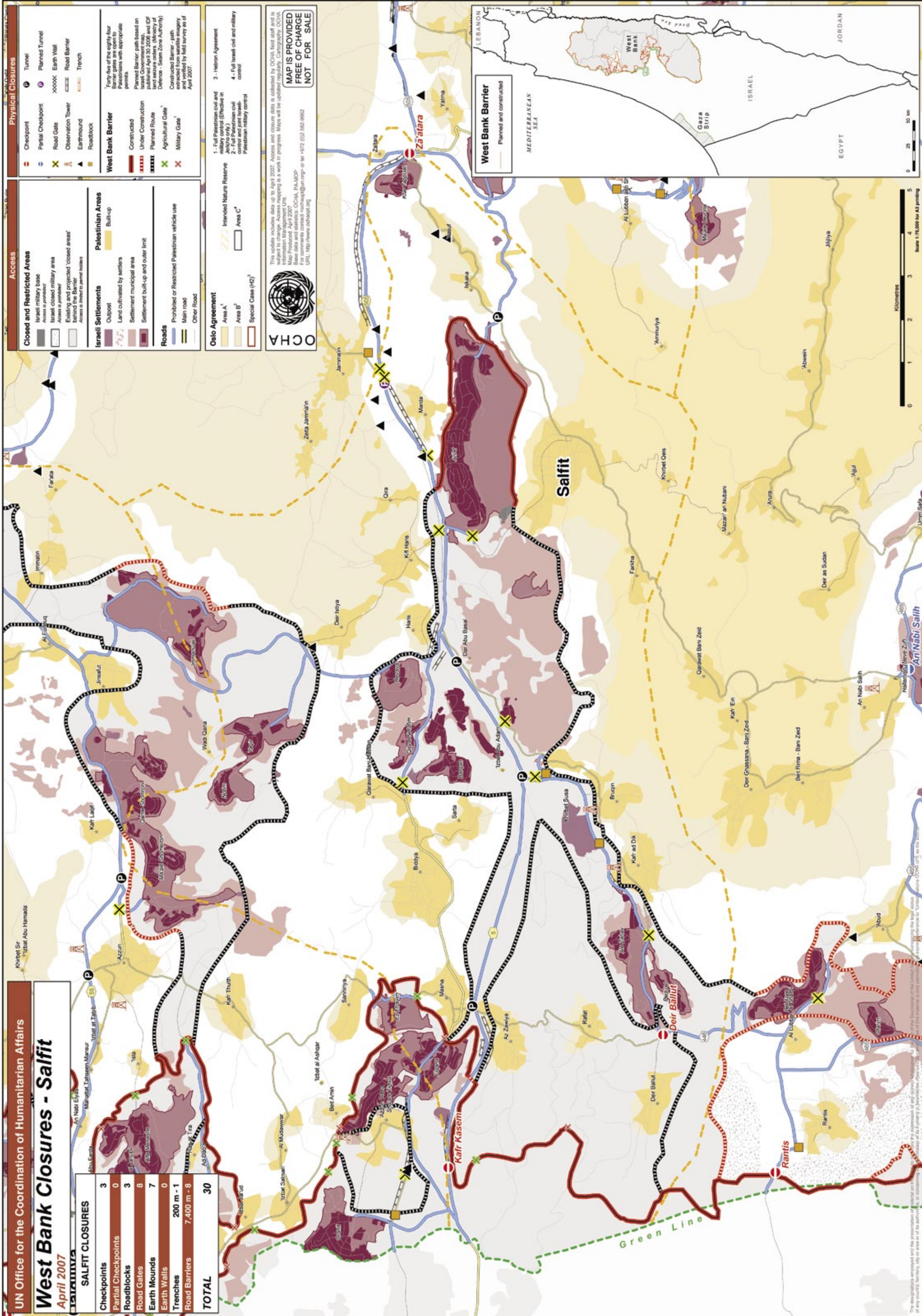


OCHA
UN Office for the Coordination of Humanitarian Affairs

This update includes data up to April 2007. Access and closure data is collected by OCHA field staff and is subject to change. Access mapping is a work in progress. Maps will be updated regularly. Cartography: OCHA
Map Produced April 2007
For comments contact: ocha-map@un.org or tel: +972 (0)2 582-5962
URL: <http://www.ocha.org>

**MAP IS PROVIDED
FREE OF CHARGE
NOT FOR SALE**

The designations employed and the presentation of material on this map do not imply the expression of any opinion whatsoever on the part of the United Nations Secretariat concerning the legal status of any country, territory, city or area or of its authorities, or concerning the delimitation of its frontiers or boundaries. Reproduction and use of this map is permitted in whole or in part for non-commercial purposes, provided the source is acknowledged.



[illegible]

Physical Closures

- Checkpoint
- Planned Tunnel
- Planned Checkpoint
- Planned Earth Wall
- Road Gate
- Road Barrier
- Observation Tower
- Earthmound
- Trench
- Roadblock

West Bank Barrier

- Constructed
- Under Construction
- Planned Route
- Agricultural Gate^a
- Military Gate^a

Access

- Intended Nature Reserve
- Area C^b
- Special Case (H)^b

Israeli Settlements

- Outpost
- Land cultivated by settlers
- Settlement municipal area
- Settlement built-up and outer limit

Roads

- Prohibited or Restricted Palestinian vehicle use
- Main road
- Other Road

Oslo Agreement

- Area A^a
- Area B^a
- Area C^a

Palestinian Areas

- Built-up

Closed and Restricted Areas

- Israeli military base
- Access is prohibited
- Israeli closed military area
- Access is prohibited
- Existing and projected 'closed areas' behind the Barrier
- Access is limited to permit holders

Legend

- Only five of the eighty-four barriers are shown. The barriers are numbered 1-84. The barriers are numbered 1-84. The barriers are numbered 1-84.
- Planned barrier path based on Israel Government map, published April 30 2005 and IDF land seizure orders. (Ministry of Defence - Seam Zone Authority)
- Constructed Barrier - path extrapolated from satellite imagery and verified by field survey as of April 2007.
- 1 - Full Palestinian civil and military control (Effective in Jericho only)
- 2 - Full Israeli civil and military control and joint laws.
- 3 - Hebron Agreement
- 4 - Full Israeli civil and military control
- 5 - Full Palestinian civil and military control (Effective in Jericho only)
- 6 - Full Israeli civil and military control and joint laws.
- 7 - Palestinian military control
- 8 - Special Case (H)^b

Scale

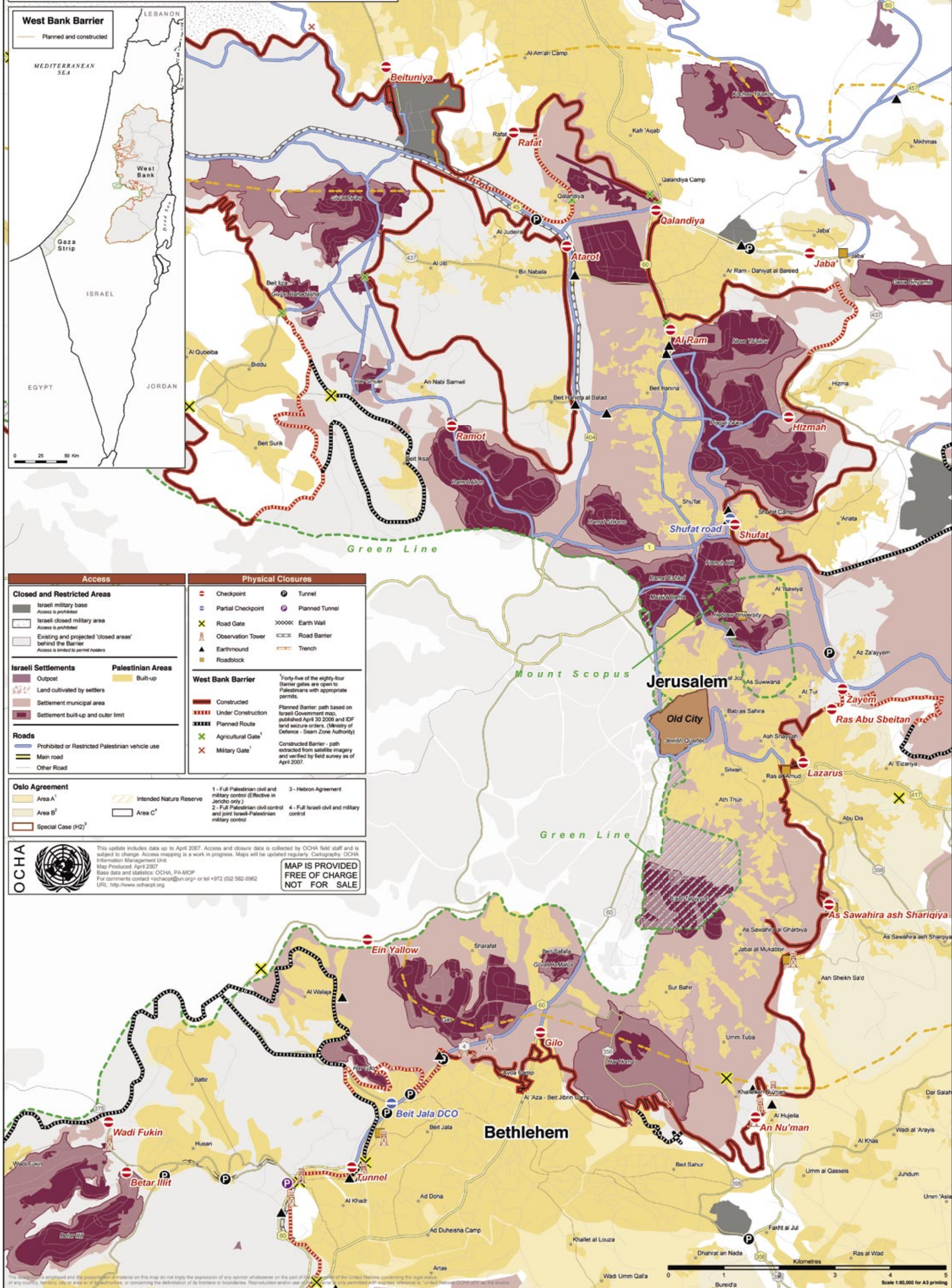
0 5 10 km

Notes

- This update includes data up to April 2007. Access and closure data is collected by OCHA field staff and is subject to change. Access mapping is a work in progress. Maps will be updated regularly. Cartography: OCHA/Map Production April 2007. Base data and statistics: OCHA, PAM-MCP. For comments contact: oachamap@un.org or tel: +972 (0)2 592-5962 URL: http://www.oachamap.org



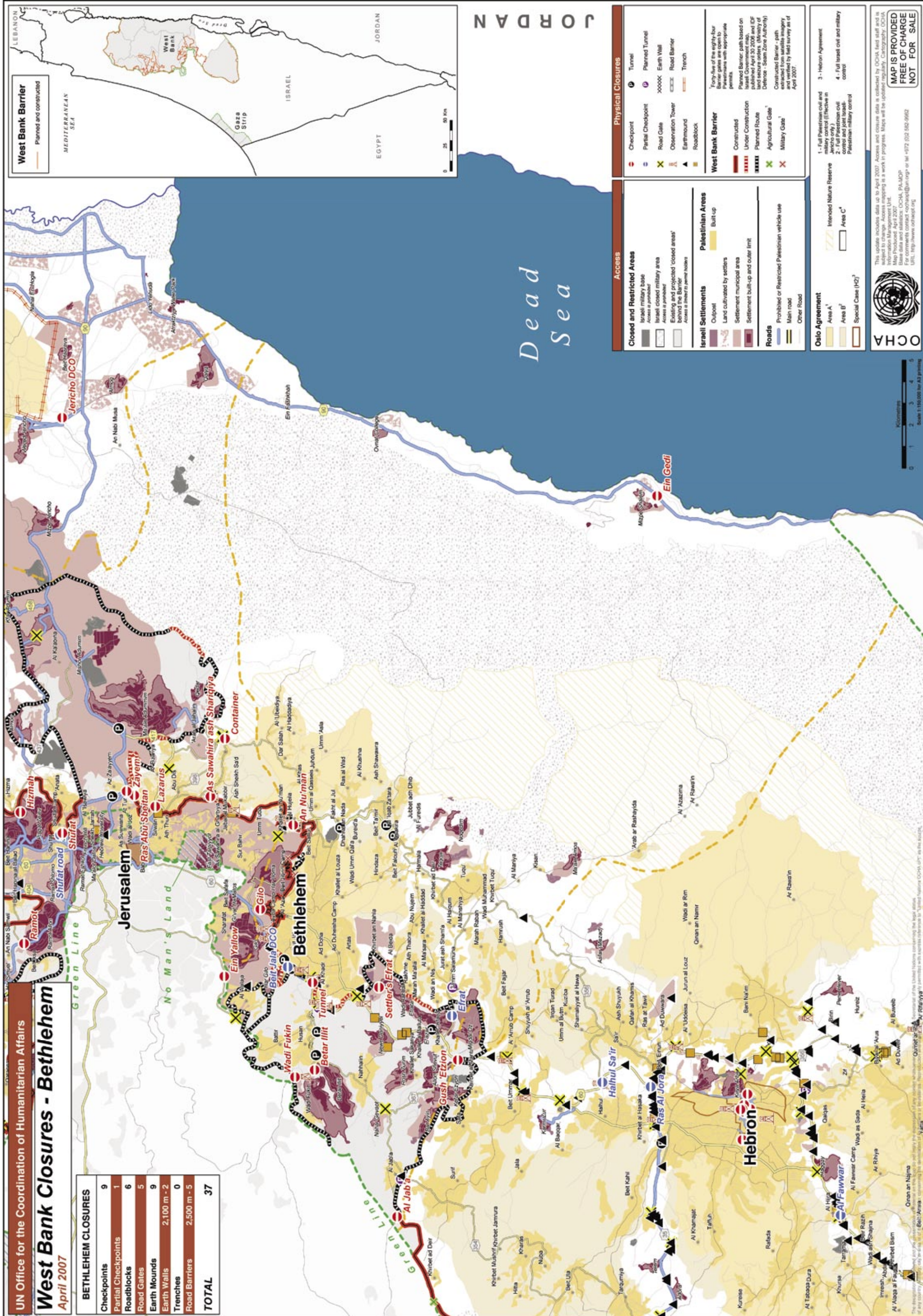
April 2007



West Bank Closures - Bethlehem

April 2007

BETHLEHEM CLOSURES	
Checkpoints	9
Partial Checkpoints	1
Roadblocks	6
Road Gates	5
Earth Mounds	9
Earth Walls	2,100 m - 2
Trenches	0
Road Barriers	2,500 m - 5
TOTAL	37



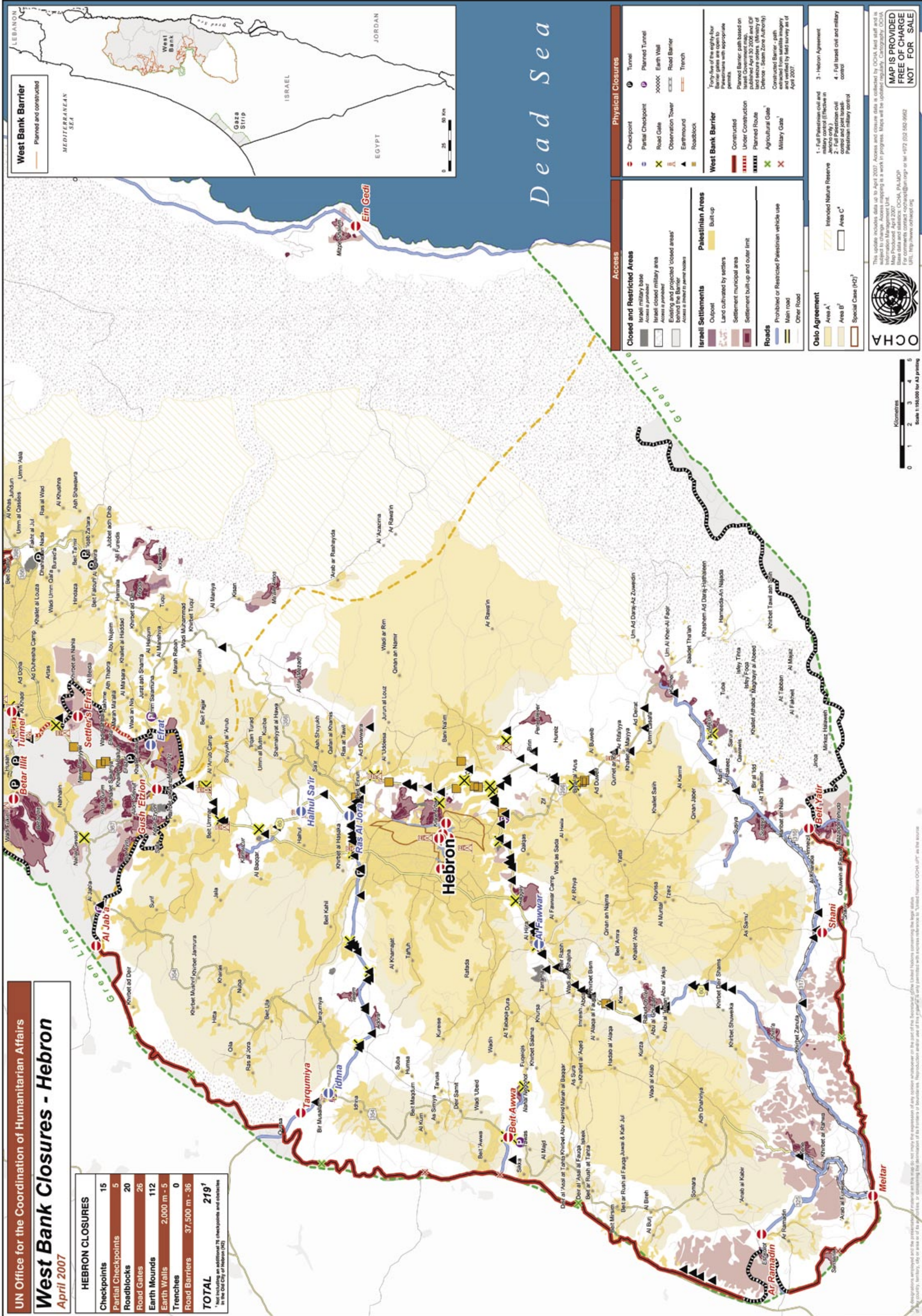
UN Office for the Coordination of Humanitarian Affairs

West Bank Closures - Hebron

April 2007

HEBRON CLOSURES	
Checkpoints	15
Partial Checkpoints	5
Roadblocks	20
Road Gates	26
Earth Mounds	112
Earth Walls	2,000 m - 5
Trenches	0
Road Barriers	37,500 m - 36
TOTAL	219¹

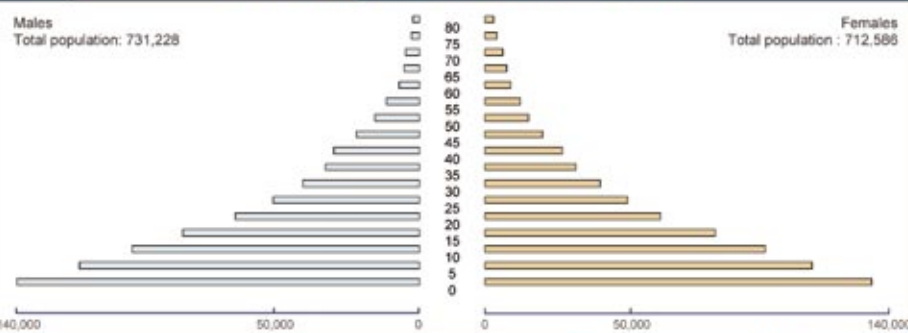
¹ Not including an additional 76 checkpoints and obstacles in the Old City of Hebron (H2)



~~AZ~~

Gaza Strip - Access

April 2007

Gaza Strip: Age Distributions - Projection for 2006**Access**

- 150 metre Buffer Zone¹ and Northern No-Go Zone²
- 500 metre Buffer Zone¹
- Primary Crossing Points
- Secondary Crossing Points
- Double Wire Fence with Watch Towers

1 - Buffer Zone
An Israeli Defence Force (IDF) imposed 150m-wide security buffer imposed by the IDF. In places, the buffer widens to 500m inside the Gaza Strip's northern and eastern borders with Israel. Buffer is enforced by frequent IDF warning fire.

2 - Northern No-Go Zone
Covering the former northern settlement block, movement in and out of this area is restricted to residents and international organisations since Dec 28 2005. Up to 250 Palestinians live inside this area in Sufa.

Legend

- Regional Road
- Main Road
- Local Road
- Track
- Governorate Boundary
- Wharves
- Hospitals
- Primary Health Care Clinics
- Builtup
- Refugee Camps
- Former Israeli Settlement
- Greenhouse Area

Fishing Limit according to 1995 Oslo Agreements: 20 nautical miles

Fishing Limit according to 2002 Bertini Agreement: 12 nautical miles

Fishing Limit Enforced by IDF since October 2006: 6 nautical miles

No Fishing Area

Erez Crossing Point
Primary crossing for Palestinian workers and humanitarian personnel

Nahal Oz
Entry point for liquid fuels

Karni Crossing Point
Primary import and export crossing

West Bank Barrier

Planned and constructed

MEDITERRANEAN SEA

ISRAEL

EGYPT

JORDAN

OCHA



This update includes data up to April 2007. Access and closure data is collected by OCHA field staff and is subject to change. Access mapping is a work in progress. Maps will be updated regularly. Cartography: OCHA Information Management Unit. Map Produced: April 2007. Base data and statistics: OCHA, MOP, PCBS. For comments contact: ochaapi@un.org or tel +972 (0)2 582-9952

MAP IS PROVIDED
FREE OF CHARGE
NOT FOR SALE

The designations employed and the presentation of material on this map do not imply the expression of any opinion whatsoever on the part of the United Nations concerning the legal status of any country, territory, city or area or of its authorities, or concerning the definition of its frontiers or boundaries. Reproduction and/or use of this material is only permitted with express reference to "United Nations OCHA 07" as the source.

Kilometres
0 1 2 3 4 5
Scale 1:125,000 for A3 printing



United Nations
Office for the Coordination of Humanitarian Affairs (OCHA)
occupied Palestinian territory
P.O. Box 38712 East Jerusalem
Phone: (972) 2 – 5829962 / 5825853, Fax: (972) 2 – 5825841
Email: ochapt@un.org, www.ochapt.org