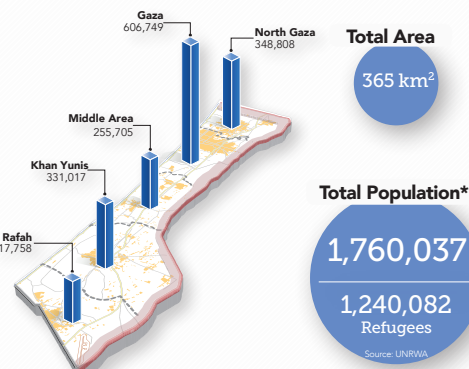


occupied Palestinian territory:
Governorates

GAZA STRIP KEY FACTS



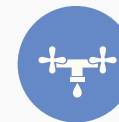
6 nautical miles Fishing Limit Enforced by IDF
November 2012 (cease fire agreement)

Mediterranean Sea



EREZ CROSSING (BEIT HANOUN)
OPEN, six days (daytime) a week for the movement of international workers and limited number of authorized Palestinians including aid workers, medical humanitarian cases, businessmen and aid workers.

WATER CONSUMPTION



over **90%***
of the water extracted from the Gaza aquifer is unsafe for human consumption and due to over-extraction the aquifer may become unusable by 2016.

UNEMPLOYMENT RATE



43.9%*
Unemployment rate in the Gaza Strip.

FOOD INSECURITY

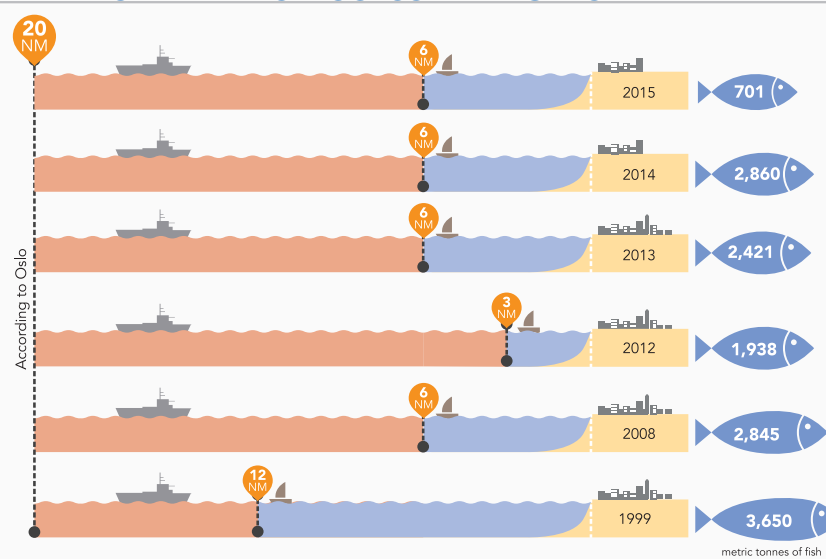
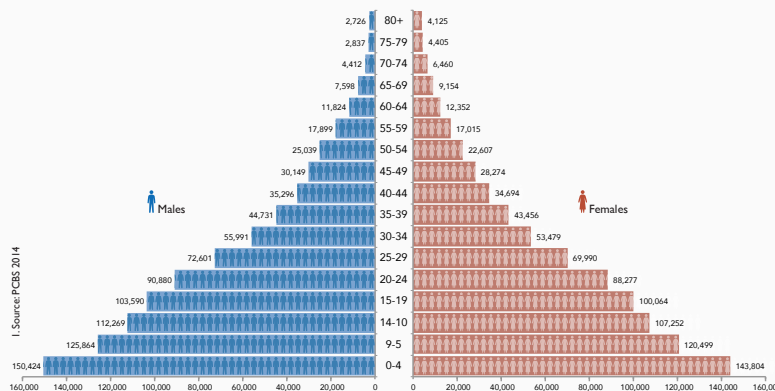


73%**
Of the population of Gaza Strip is food insecure.

*Source: PCBS 2014

**Source: 2013 Socio-Economic and Food Security Survey FAO, UNRWA, WFP, PCBS

SEA AREAS ACCESSIBLE TO FISHERMEN

GAZA STRIP GOVERNORATE POPULATION AND AGE DISTRIBUTION¹

ACCESS AND PHYSICAL CLOSURES

CROSSING POINTS

- Open
- Closed but Open for Exceptional Cases
- Closed

CLOSED AND RESTRICTED AREAS

- No-Go Zone (300 meters)
- Risk zone (0-1000) meters.

FENCES AND BARRIERS

- Concrete Wall
- Double Wired Fence
- Wired Fence
- Effective Fishing Limit

ROADS

- Main Road
- Local Road
- Track
- Philadelphian Corridor Road

LOCATIONS

- UN Compound
- Damaged Road Bridge
- Road Bridges
- Hospital
- Hotel Area
- Landmark
- Wastewater Treatment Plant
- Sewage Outlet (In Constant Use)
- Sewage Outlet (Overflow Only)
- Wharf

PALESTINIAN AREAS

- Built-up Area
- Refugee Camps
- Gaza Neighbourhood
- Governorate Boundary
- Main City
- over 50000
- 2001 to 50000
- 1001 to 2000
- under 1000

ISRAEL

- Israeli Built-up Areas
- Roads

Access and closure data as of July 2014. It is collected by OCHA staff and is subject to change.
Cartography: OCHA Information Management Unit
Map Produced: September 2014
Base data and statistics: OCHA, JRC, PA-MOPIC
For comments contact: info@ochaopt.org or tel. +972 (0)2 582-9962
www.ochaopt.org

MAP PROVIDED
FOR DISCUSSION
ONLY