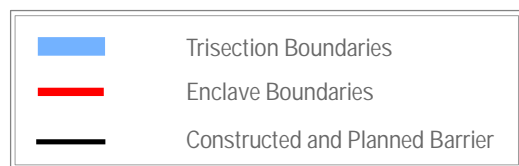




# Territorial Fragmentation of the West Bank

October 2006

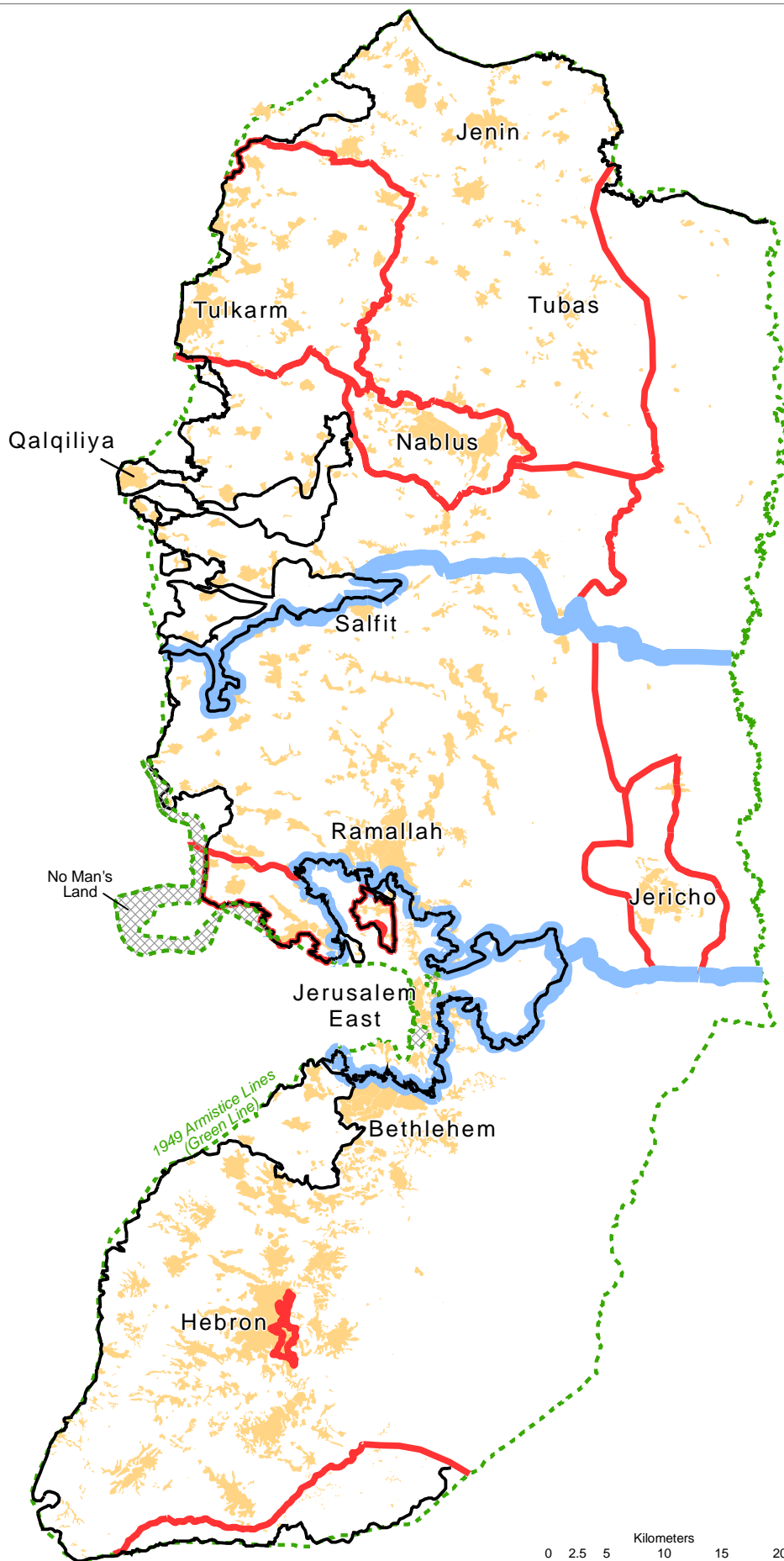
2007 CAP - Consolidated Appeals Process



## TERRITORIAL FRAGMENTATION

A combination of checkpoints, physical obstacles and a permit system that has effectively cut the West Bank into three distinct areas in addition to East Jerusalem. Within these areas further enclaves have been created - also bordered by checkpoints and roadblocks - that has led to one Palestinian community being isolated from its neighbour.

The Jordan Valley is practically cut off to Palestinians from the rest of the West Bank. And, over the past year, progressively fewer Palestinians have been able to obtain permits to visit 'closed areas' - land to the west of the West Bank Barrier.



0 2.5 5 10 15 20  
Kilometers