



Sewage flows from an outlet into the sea in front of Shati refugee camp in Gaza City.
© Photo by OCHA.

GAZA



Palestinian demonstration on the beach near the fence, protesting against the naval blockade, September 2018. © Photo by Ashraf Amra

GAZA STRIP

ACCESS AND MOVEMENT - DECEMBER 2018



GAZA STRIP KEY FACTS¹

Total Area
365 km²

Total Population
1,912,267

Registered Refugees
1,435,616

Source: UNRWA as of 31 December 2016

Unemployment Rate
54.9 %

Source: PCBS Q3 2018

12 Nautical miles Fishing Limit (2002)

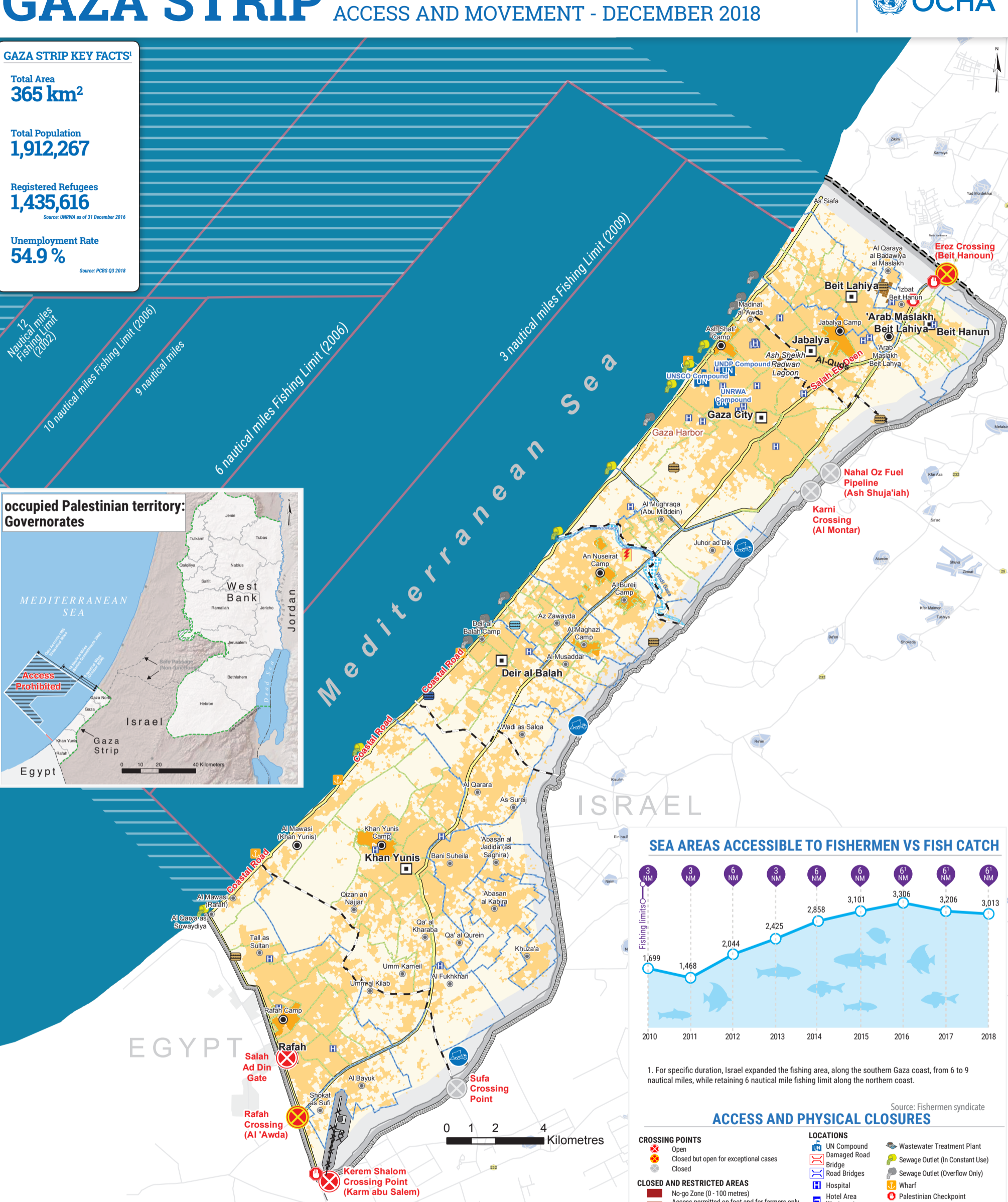
10 nautical miles Fishing Limit (2006)

9 nautical miles

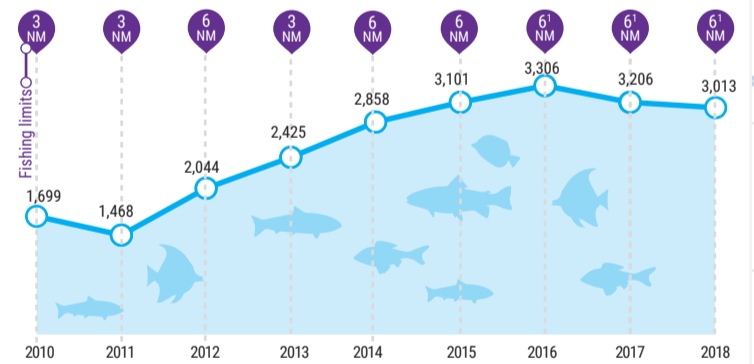
6 nautical miles Fishing Limit (2006)

3 nautical miles Fishing Limit (2009)

occupied Palestinian territory: Governorates



SEA AREAS ACCESSIBLE TO FISHERMEN VS FISH CATCH



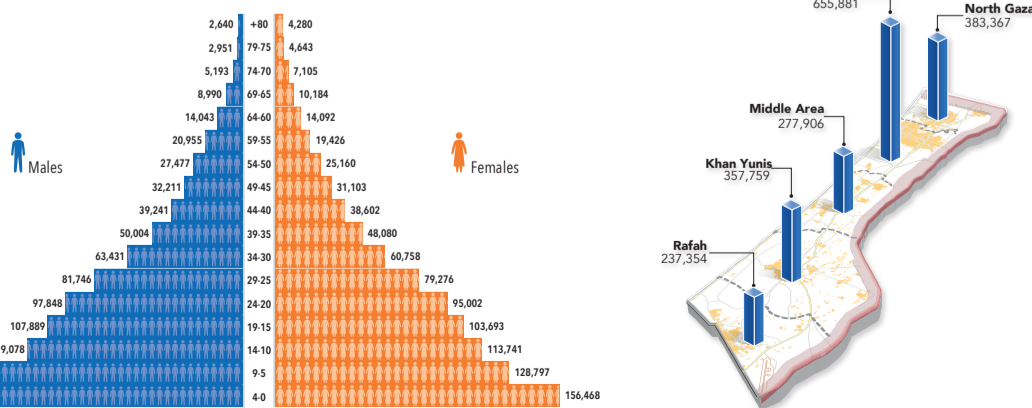
1. For specific duration, Israel expanded the fishing area, along the southern Gaza coast, from 6 to 9 nautical miles, while retaining 6 nautical mile fishing limit along the northern coast.

Source: Fishermen syndicate

ACCESS AND PHYSICAL CLOSURES

- CROSSING POINTS**
 - Open
 - Closed but open for exceptional cases
 - Closed
- CLOSED AND RESTRICTED AREAS**
 - No-go Zone (0 - 100 metres)
 - Access permitted on foot and for farmers only (100-300 metres)
 - Risk zone (300-1000) metres.
- FENCES AND BARRIERS**
 - Concrete Wall
 - Double Wired Fence
 - Wired Fence
 - Effective Fishing Limit
- ROADS**
 - Main Road
 - Local Road
 - Track
- LOCATIONS**
 - UN Compound
 - Damaged Road
 - Bridge
 - Road Bridges
 - Hospital
 - Hotel Area
 - Waste water
 - Desalination Plant
 - Landfill
 - Wastewater Treatment Plant
 - Sewage Outlet (In Constant Use)
 - Sewage Outlet (Overflow Only)
 - Wharf
 - Palestinian Checkpoint
 - Water Desalination Plant
 - Sea water Desalination Plant
- PALESTINIAN AREAS**
 - Built-up Area
 - Refugee Camps
 - Gaza Neighbourhood
 - Governorate Boundary
 - Main City
 - over 50,000
 - 2,001 to 50,000
 - 1,001 to 2,000
 - under 1,000
- ISRAELI**
 - Israeli Built-up Areas
 - Roads

GAZA STRIP POPULATION AND AGE DISTRIBUTION²



1, 2 Source: PCBS 2017 unless otherwise specified

The designations employed and the presentation of material on this map do not imply the expression of any opinion whatsoever on the part of the Secretariat of the United Nations concerning the legal status of any country, territory, city or area or of its authorities, or concerning the delimitation of its frontiers or boundaries. Reproduction and/or use of this material is only permitted with express reference to "United Nations OCHA oPt" as the source.

Data applicable until July 2018. Access and closure data is collected by OCHA field staff and is subject to change. Access mapping is a work in progress. Maps are updated periodically. Cartography: OCHA Information Management Unit. Map Produced: September 2018. Base data and statistics: OCHA, JRC, PA-MOPIC, aerial June 2017, CMWU. For comments contact: ochaopt@un.org or tel. +972 (0)2 582-9962, www.ochaopt.org



NORTH GAZA

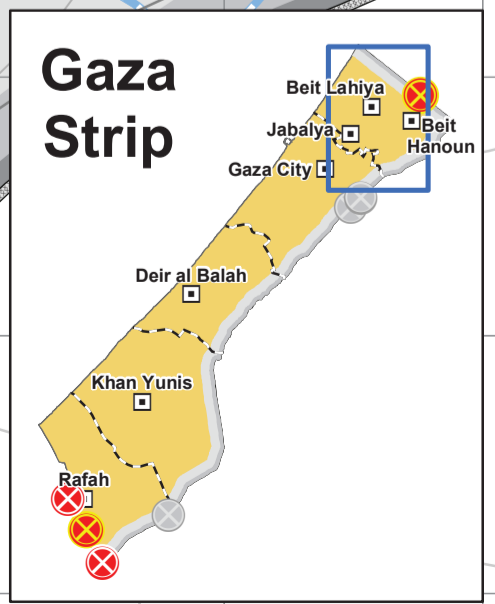
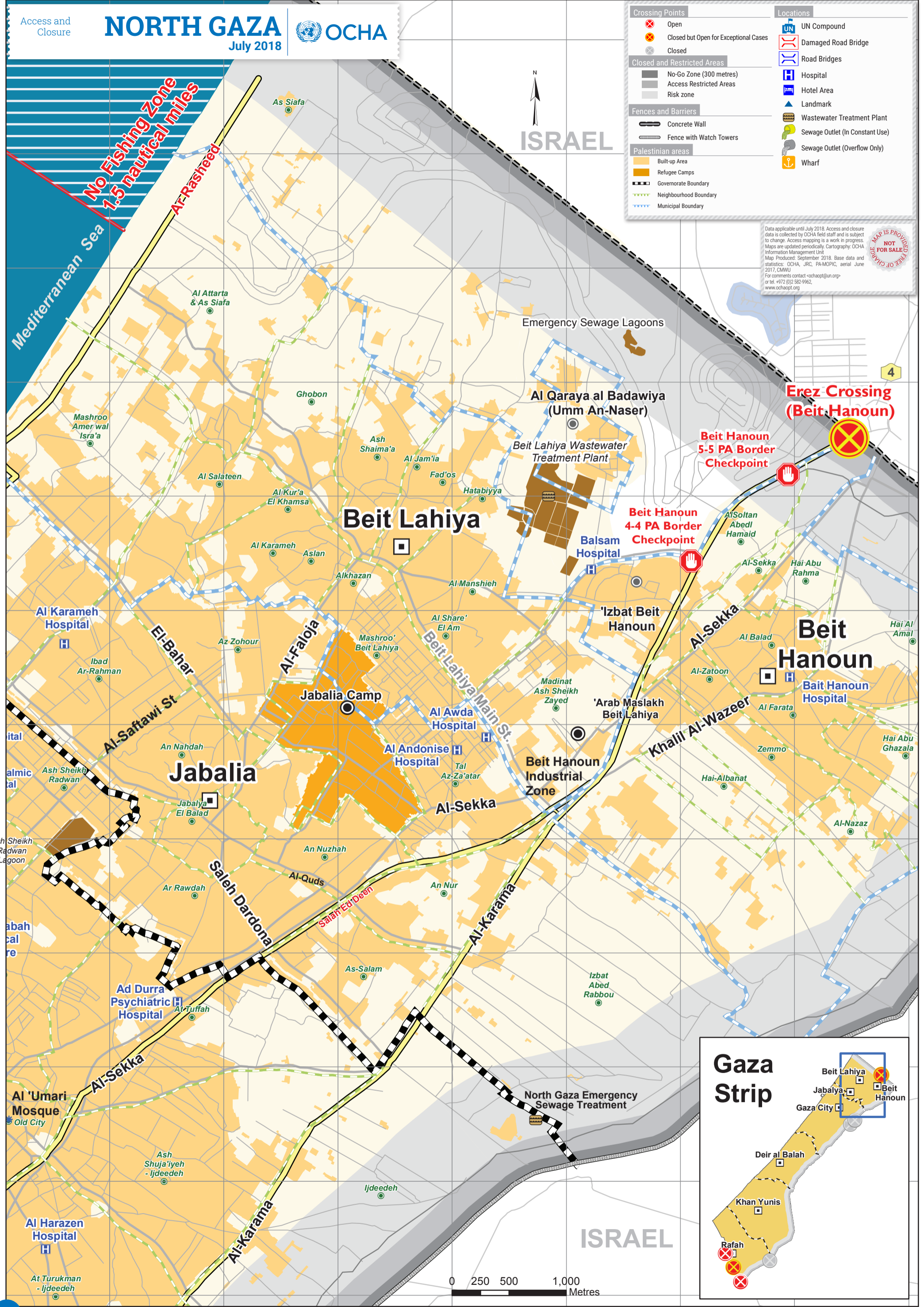
July 2018



Crossing Points		Locations	
⊗	Open	UN Compound	UN Compound
⊗	Closed but Open for Exceptional Cases	Damaged Road Bridge	Damaged Road Bridge
⊗	Closed	Road Bridges	Road Bridges
Closed and Restricted Areas		Hospital	Hospital
■	No-Go Zone (300 metres)	Hotel Area	Hotel Area
■	Access Restricted Areas	Landmark	Landmark
■	Risk zone	Wastewater Treatment Plant	Wastewater Treatment Plant
Fences and Barriers		Sewage Outlet (In Constant Use)	Sewage Outlet (In Constant Use)
—	Concrete Wall	Sewage Outlet (Overflow Only)	Sewage Outlet (Overflow Only)
—	Fence with Watch Towers	Wharf	Wharf
Palestinian areas			
■	Built-up Area		
■	Refugee Camps		
—	Governorate Boundary		
—	Neighbourhood Boundary		
—	Municipal Boundary		

Data applicable until July 2018. Access and closure data is collected by OCHA field staff and is subject to change. Access mapping is a work in progress. Maps are updated periodically. Cartography: OCHA Information Management Unit. Map Produced: September 2018. Base data and statistics: OCHA, JRC, PA-MOPIC, aerial June 2017, CMWU. For comments contact ochapt@un.org or tel. +972 (0)2 582-9962, www.ochapt.org

MAP IS PROVIDED NOT FOR SALE FREE OF CHARGE



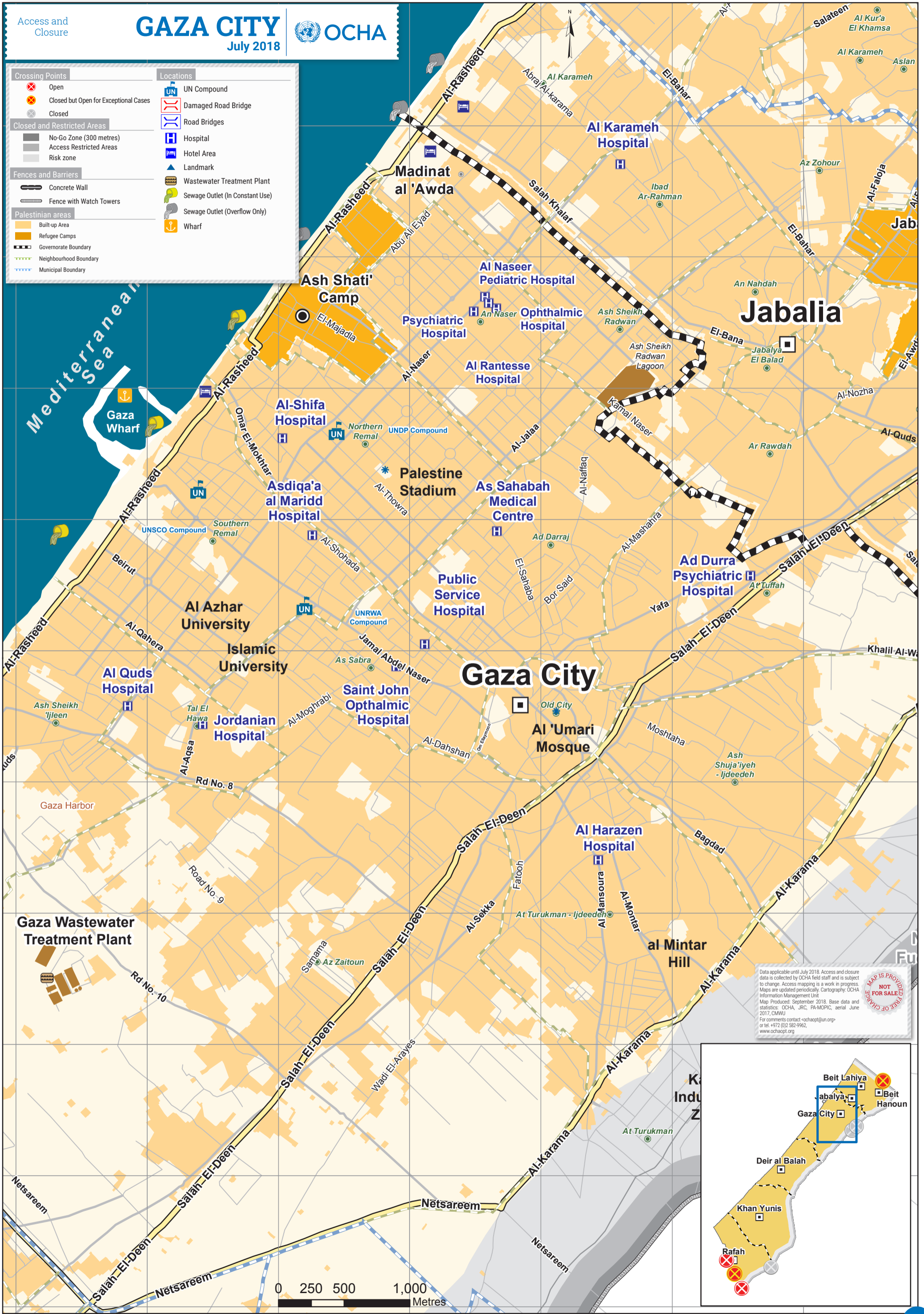
GAZA CITY

July 2018

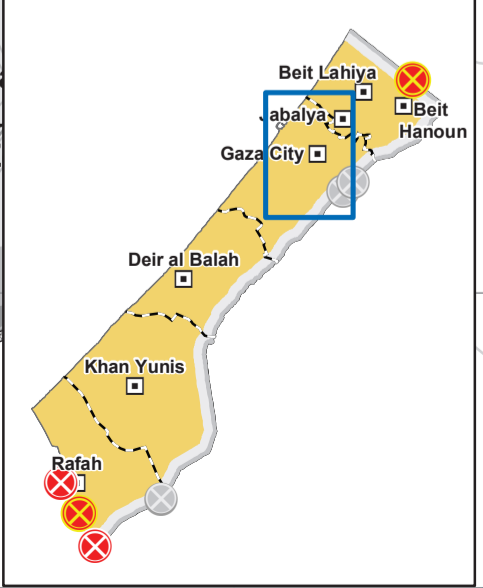


Access and Closure

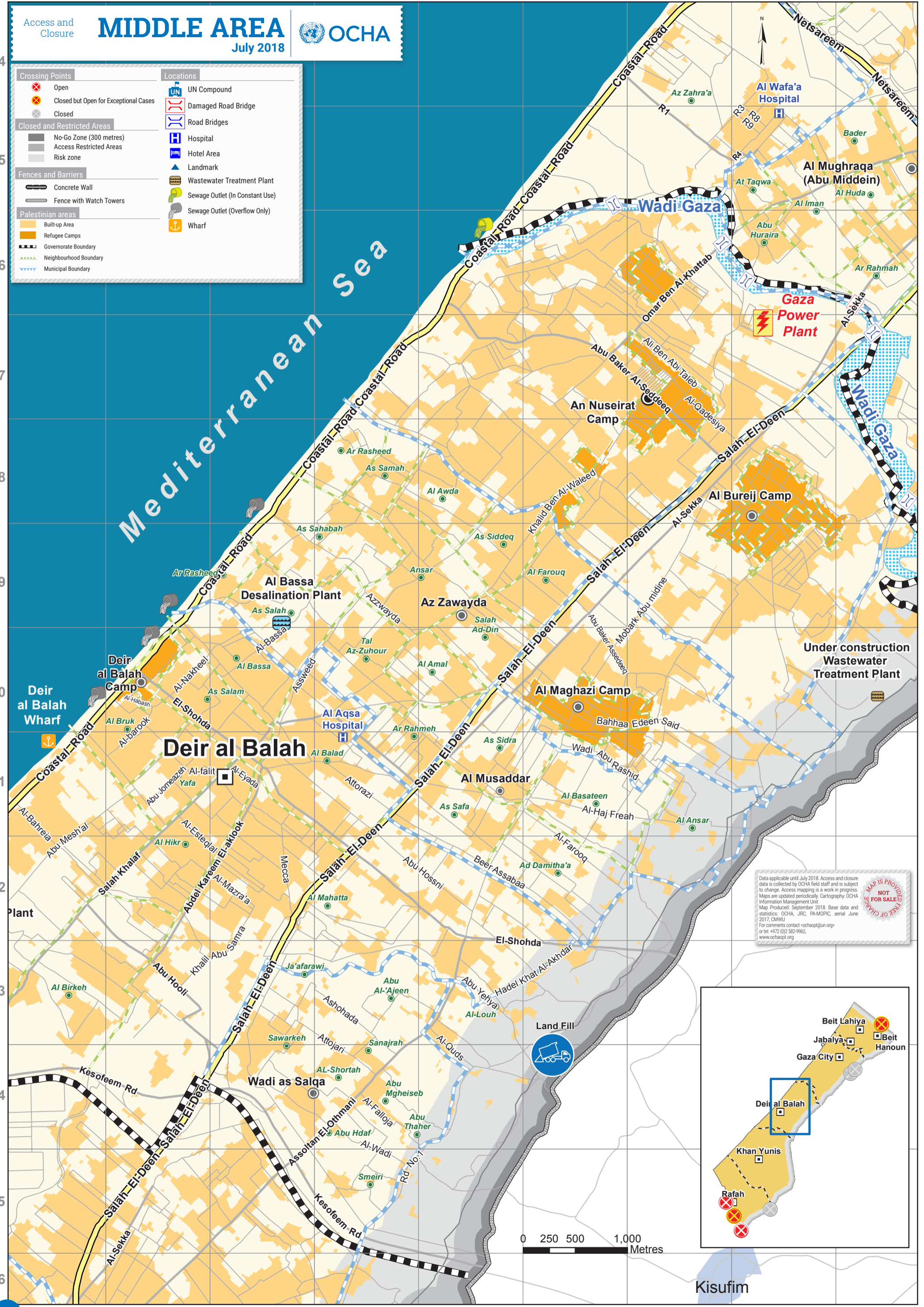
Crossing Points	Locations
Open	UN Compound
Closed but Open for Exceptional Cases	Damaged Road Bridge
Closed	Road Bridges
Closed and Restricted Areas	Hospital
No-Go Zone (300 metres)	Hotel Area
Access Restricted Areas	Landmark
Risk zone	Wastewater Treatment Plant
Fences and Barriers	Sewage Outlet (In Constant Use)
Concrete Wall	Sewage Outlet (Overflow Only)
Fence with Watch Towers	Wharf
Palestinian areas	
Built-up Area	
Refugee Camps	
Governorate Boundary	
Neighbourhood Boundary	
Municipal Boundary	



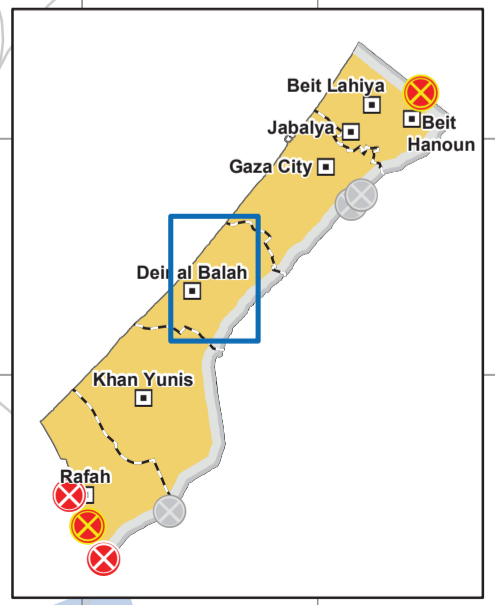
Data applicable until July 2018. Access and closure data is collected by OCHA field staff and is subject to change. Access mapping is a work in progress. Maps are updated periodically. Cartography: OCHA Information Management Unit
 Map Produced: September 2018. Base data and statistics: OCHA, JRC, PA-MOPIC, aerial June 2017, CMWU
 For comments contact ochaapt@un.org or tel. +972 (0)2 582-9962, www.ochaapt.org



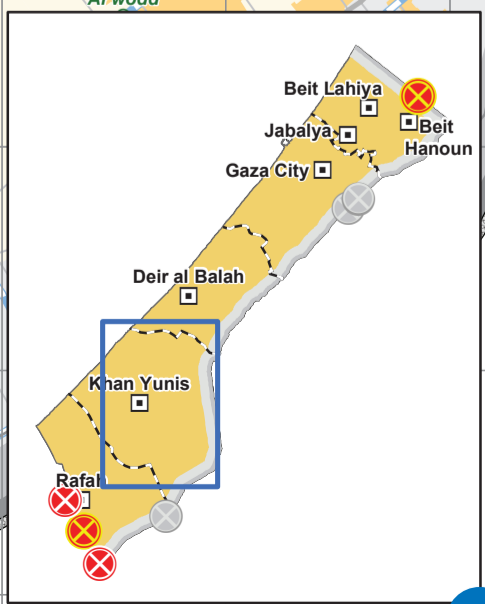
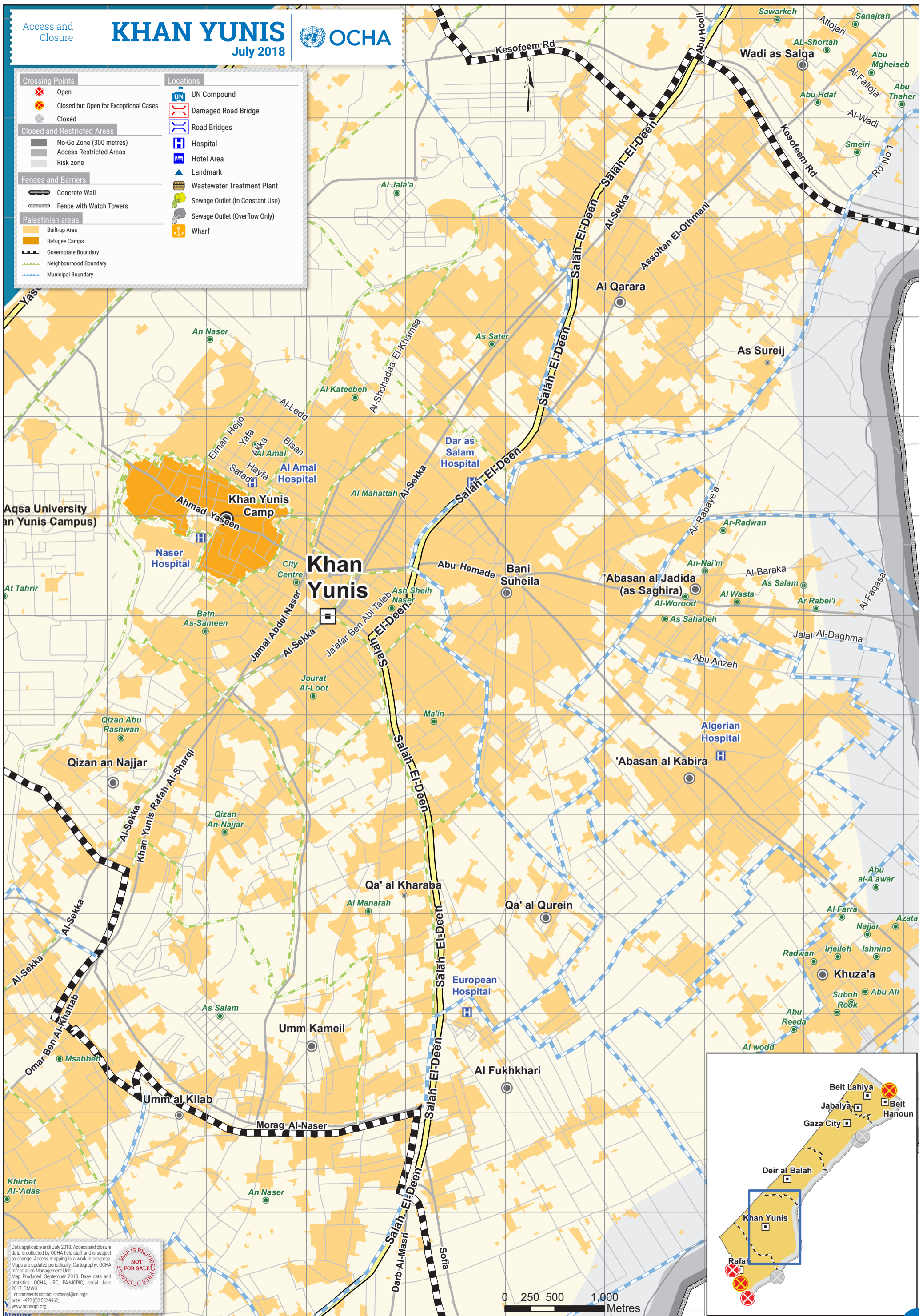
Crossing Points	Locations
Open	UN Compound
Closed but Open for Exceptional Cases	Damaged Road Bridge
Closed	Road Bridges
Closed and Restricted Areas	
No-Go Zone (300 metres)	Hospital
Access Restricted Areas	Hotel Area
Risk zone	Landmark
Fences and Barriers	
Concrete Wall	Wastewater Treatment Plant
Fence with Watch Towers	Sewage Outlet (In Constant Use)
Palestinian areas	
Built-up Area	Sewage Outlet (Overflow Only)
Refugee Camps	Wharf
Governorate Boundary	
Neighbourhood Boundary	
Municipal Boundary	



Data applicable until July 2018. Access and closure data is collected by OCHA field staff and is subject to change. Access mapping is a work in progress. Maps are updated periodically. Cartography: OCHA Information Management Unit. Map Produced: September 2018. Base data and statistics: OCHA, JRC, PA-MOPIC, aerial June 2017, DMWU. For comments contact ochaapt@un.org or tel. +972 (0)2 582-9962, www.ochaapt.org

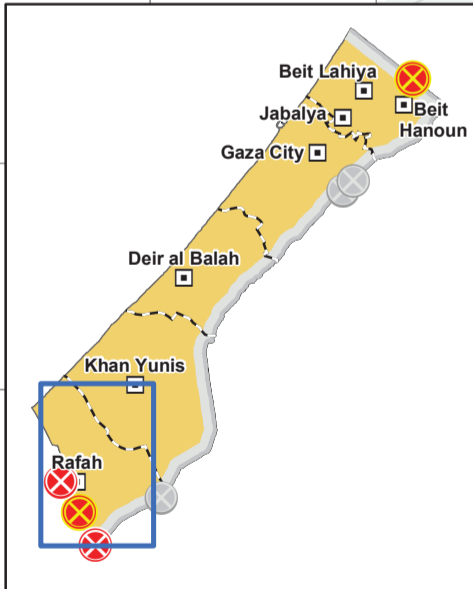
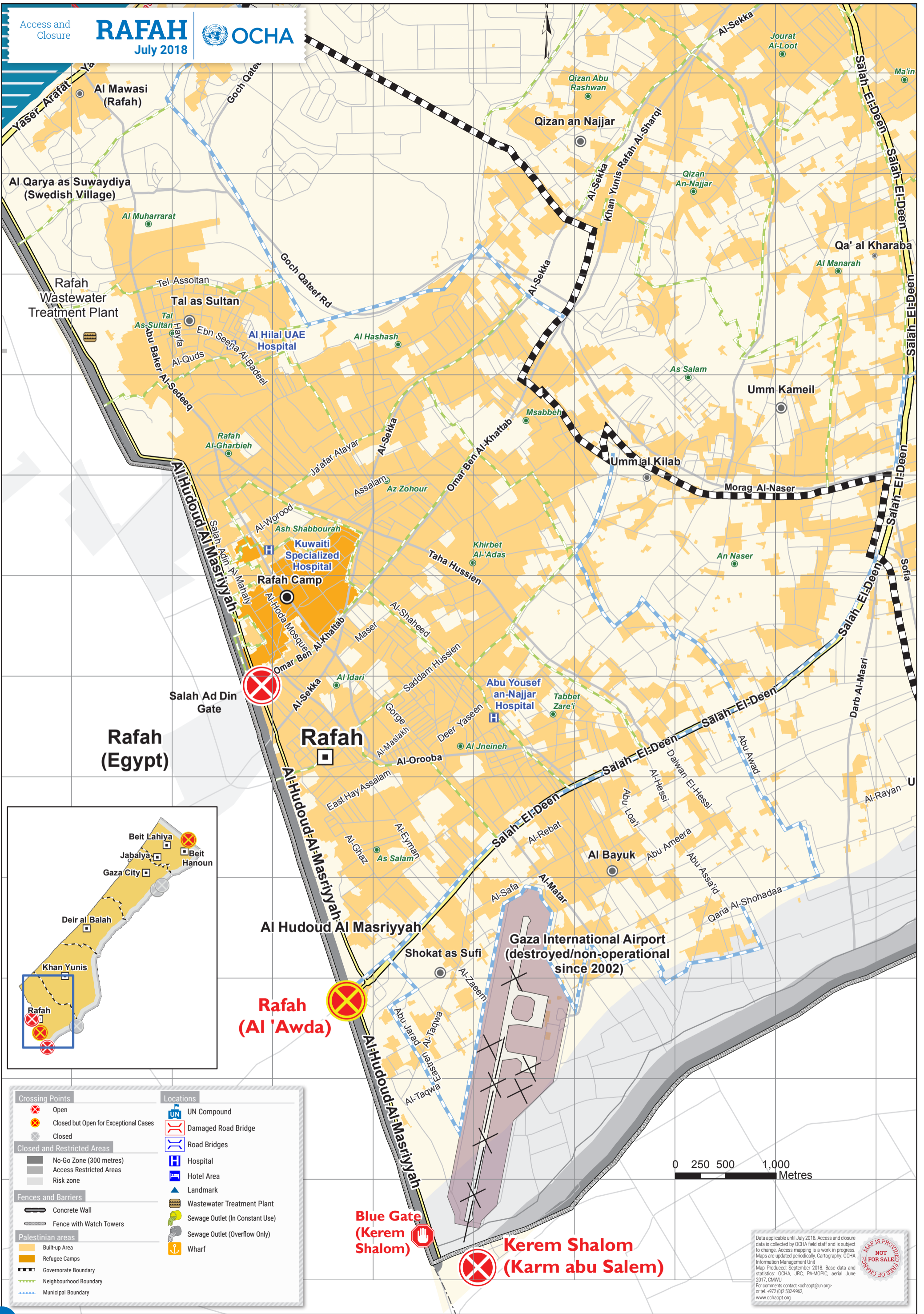


Crossing Points	Locations
Open	UN Compound
Closed but Open for Exceptional Cases	Damaged Road Bridge
Closed	Road Bridges
Closed and Restricted Areas	
No-Go Zone (300 metres)	Hospital
Access Restricted Areas	Hotel Area
Risk zone	Landmark
Fences and Barriers	
Concrete Wall	Wastewater Treatment Plant
Fence with Watch Towers	Sewage Outlet (In Constant Use)
Palestinian areas	
Built-up Area	Sewage Outlet (Overflow Only)
Refugee Camps	Wharf
Governorate Boundary	
Neighbourhood Boundary	
Municipal Boundary	



Data applicable until July 2018. Access and closure data is collected by OCHA field staff and is subject to change. Access mapping is a work in progress. Maps are updated periodically. Cartography: OCHA Information Management Unit
 Map Produced: September 2018. Base data and statistics: OCHA, JRC, PA-MOPIC, aerial June 2017, DMU
 For comments contact ochaapt@un.org or tel: +972 (0)2 582-9962
 www.ochaapt.org





Crossing Points	Locations
Open	UN Compound
Closed but Open for Exceptional Cases	Damaged Road Bridge
Closed	Road Bridges
Closed and Restricted Areas	
No-Go Zone (300 metres)	Hospital
Access Restricted Areas	Hotel Area
Risk zone	Landmark
Fences and Barriers	
Concrete Wall	Wastewater Treatment Plant
Fence with Watch Towers	Sewage Outlet (In Constant Use)
Palestinian areas	
Built-up Area	Sewage Outlet (Overflow Only)
Refugee Camps	Wharf
Governorate Boundary	
Neighbourhood Boundary	
Municipal Boundary	



Data applicable until July 2018. Access and closure data is collected by OCHA field staff and is subject to change. Access mapping is a work in progress. Maps are updated periodically. Cartography: OCHA Information Management Unit. Map Produced: September 2018. Base data and statistics: OCHA, JRC, PA-MOPIC, aerial June 2017, OCHA. For comments contact ochaopt@un.org or tel. +972 (0)2 582-9962, www.ochaopt.org