

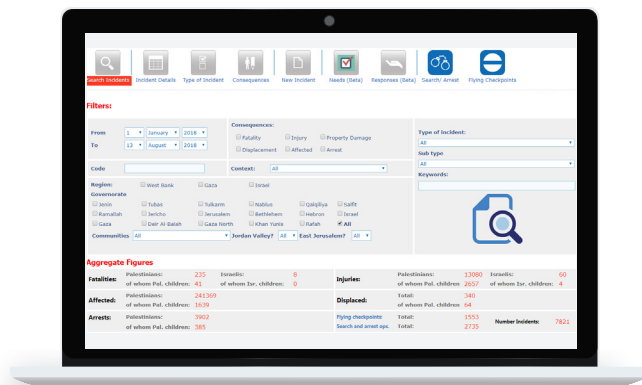


# OCHA OPT

ONLINE TOOLS, PLATFORMS  
AND MAPPING APPLICATION



# OCHA OPT ONLINE DATABASES



## PROTECTION OF CIVILIANS DATABASE

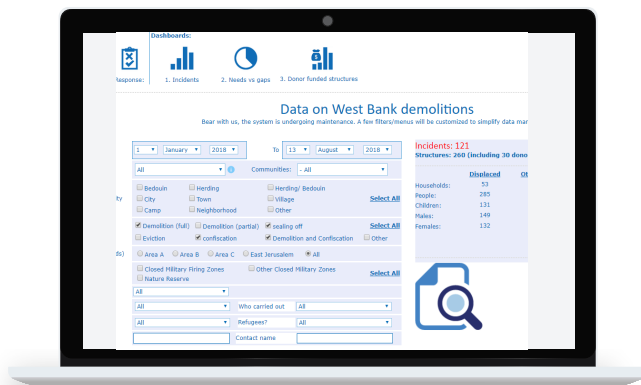
Contains data on key conflict-related indicators included in OCHA's weekly/biweekly Protection of Civilians report, with some categories covered as far back as 2006. Main categories include Palestinian and Israeli fatalities and injuries and settler-related incidents resulting in Palestinian or Israeli casualties or property-damage. Data requests can be customized.

Password protected database, send an email to [ochaopt@un.org](mailto:ochaopt@un.org) to request an account.

<http://bit.ly/2HeN8mY>

Landing page and public dashboards:

<http://bit.ly/2tQOHQ8>



## WEST BANK DEMOLITIONS AND DISPLACEMENT DATABASE

This is an online database that includes data on the Israeli authorities' destruction of Palestinian-owned property from 2009 to the present, as documented by OCHA field teams. Disaggregated data on types of structures (including donor-funded humanitarian assistance) and people displaced is provided, along with geographic location and a description of each incident.

Password protected database, send an email to [ochaopt@un.org](mailto:ochaopt@un.org) to request an account.

<http://bit.ly/2SFr3jz>

Landing page and public dashboards:

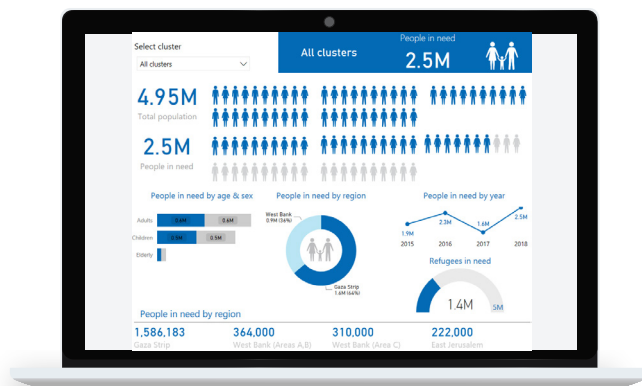
<http://bit.ly/2SMJgLW>



## OFFICIAL DATA ON DEMOLITION ORDERS

This interactive web-based platform presents a dataset obtained from the Israeli Civil Administration\* on all the demolition orders it has issued in Area C since 1988. It enables users to visualize/map such orders based on various indicators, including year, status, governorate, residential area, geographical area, etc.

<http://bit.ly/2XMLjDI>



## HUMANITARIAN RESPONSE STRATEGY 2018-2020

The humanitarian community in the occupied Palestinian territory (oPt) has developed a strategic plan for the oPt every year since 2003. The current Humanitarian Response Plan covers the three-year period of 2018-2020 and focuses on addressing needs identified in the Humanitarian Needs Overview, in the West Bank and the Gaza Strip.

The dashboards below provide interactive environment to view humanitarian needs, response planning, projects and funding requirements by governorate, cluster and agency.

Global Humanitarian Overview 2019:

<https://hum-insight.info/>

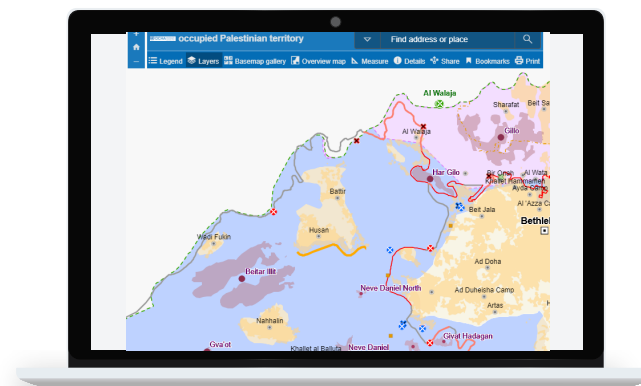
Planned Projects in 2018: <http://bit.ly/2TdrfLU>

Humanitarian Needs Overview:

<http://bit.ly/2VC6lxy>

Humanitarian Response Plan:

<http://bit.ly/2tTcA9u>



## INTERACTIVE MAP OF THE OPT

The interactive map of the oPt provides access to a variety of OCHA mapping layers, including those featured on its closure, thematic and geographic reference maps.

Users can zoom into specific areas, display layers of their choice, and change the background into a satellite image or a topographic map. The map allows users to customize the visualization of data and layers, collected by OCHA, in combination with global datasets and baseline information, such as Open Street Map and Google Maps.

<http://bit.ly/2Ti9iM8>

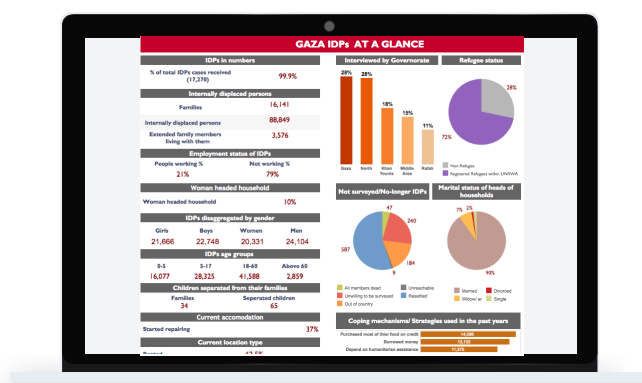


## GAZA STRIP ELECTRICITY SUPPLY

For the past decade, the Gaza Strip has suffered from a chronic electricity deficit, which has further deteriorated since April 2017 in the context of disputes between the de facto authorities in Gaza and the West Bank-based Palestinian Authority. The ongoing power shortage has severely impacted the availability of essential services, and undermined Gaza's fragile economy.

The information presented in the dashboards is provided to OCHA on a daily basis by the Gaza Electricity Distribution Company (GEDCO), the official body in charge of electricity supply in the Gaza Strip.

<http://bit.ly/2SMMC1u>

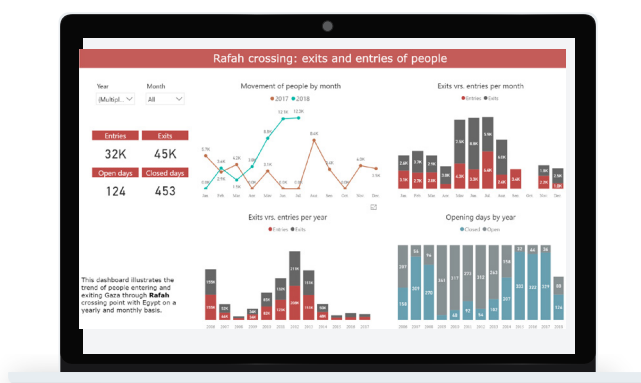


## 2015 GAZA SURVEY OF INTERNALLY DISPLACED PERSONS

The IDP working group in Gaza, chaired by OCHA, carried out a re-registration and vulnerability profiling exercise of IDP households in Gaza, focusing on the approximately 18,000 households who had lost their homes during the 2014 conflict.

A key output of the exercise was a unified database containing information about IDP status, living conditions, locations, vulnerabilities and needs of all those who lost their homes as a result of the conflict.

<http://bit.ly/2XCuT01>



## GAZA CROSSINGS DATABASE

Via four online “dashboards”, OCHA monitors the movement of people and goods through the Gaza crossing points with Israel and Egypt.

The dashboards have been produced by combining unique datasets provided by a number of local sources on the daily movement of people and goods to and from Gaza since 2007.

The dashboards are updated on a regular basis to provide an overview of current and past access trends impacting the humanitarian situation Gaza.

<http://bit.ly/2EN9FFQ>



## INTERACTIVE CHARTS ON EMERGENCY FUEL

To allow for the maintenance of a minimum level of critical service in Gaza, humanitarian agencies provide donor-funded emergency fuel to the most vital, life-saving health, water and sanitation facilities.

These interactive charts illustrate the amount of emergency fuel that has entered into Gaza every year since 2013 and the number of facilities benefitting from this aid. Users can filter or break down the data by year, month, sector, facility and donor.

<http://bit.ly/2EN9FFQ>



## 2013 AREA C VULNERABILITY PROFILE PROJECT

The Vulnerability Profile Project includes information on a range of humanitarian indicators related to physical protection, access to land and livelihoods, water and sanitation, education and health, among others.

The VPP visualization tool presents the most comprehensive collection of data on Area C available to the humanitarian community as well as to development actors. In addition, OCHA integrates indicators based on additional sources, such as baseline information from State of Palestine institutions and detailed cluster surveys, to guarantee that the platform continues to present current and reliable information on Area C.

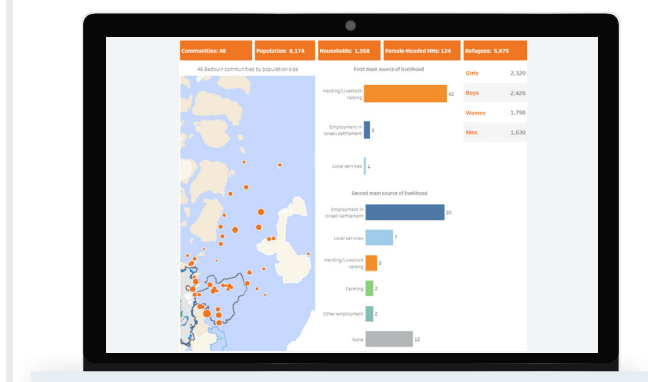
<http://bit.ly/2NK4Wrr>



## 2015 VULNERABILITY PROFILE PROJECT 'PLUS'

In 2015, OCHA coordinated a multi-cluster/multi-partner nation-wide vulnerability assessment that captured information on a wide range of humanitarian indicators related to physical protection, access to land and livelihoods, water and sanitation, education and health.

<http://bit.ly/2lQlnDH>



## 46 BEDOUIN COMMUNITIES AT RISK OF FORCIBLE TRANSFER IN THE CENTRAL WEST BANK

Many Palestinians throughout the West Bank are at risk of forcible transfer due to a coercive environment generated by Israeli policies and practices. In the central West Bank, 46 Palestinian Bedouin/herding communities are considered to be at high-risk of forcible transfer due to a “relocation” plan advanced by the Israeli authorities.

The Vulnerability Profile dashboard is an online tool designed to visualize the key findings of this comprehensive data set, which are presented through charts on specific indicators under several thematic sections. Updated demographic figures are also available.

<http://bit.ly/2VyUJk5>



## COMMUNITY - DRIVEN OUTLINE PLANS IN AREA C

This online dashboard aims at providing up to date information on the progress of local outline plans prepared with, and for, Palestinian communities in Area C, 60 per cent of the West Bank. The dashboard provides geographic information on 106 community-driven local outline plans including areas, number of beneficiaries, action plans estimated budgets, donors. The dynamic web based nature of the dashboard will enable humanitarian and development actors to customize/filter the data to fit with their requirements.

<http://bit.ly/2XDboFa>



## WHO DOES WHAT WHERE AND WHEN (4W)

The 4W database was designed to provide key information regarding which organizations (Who) are carrying out which activities (What) in which locations (Where) in Which period (When). This information is essential to cluster coordinators and organizations to coordinate their activities effectively, reach their targets on a timely manner and ensure that humanitarian needs are met without gaps or duplication.

<http://bit.ly/2VDyCZT>

4W Movie by WASH Cluster

<http://bit.ly/2TojP87>



## WINTER STORM PORTAL

OCHA, in coordination with State of Palestine Governorates, the Palestinian Red Crescent Society and Palestinian Civil Defence, utilizes a West Bank Winter Storm online system to support agencies in reporting needs and responses. The online system allows operational responders in the field as well as senior managers to access needs and response data concurrently.

Password protected. Request access permission from: [imu@un.org](mailto:imu@un.org)

<http://bit.ly/2tP03IV>



## OPT HUMANITARIAN FUND

The Humanitarian Fund *Business Intelligence* dashboard provides real-time update on donor contributions, allocations, cluster and beneficiary data and geographical distribution. The data covers 2015, 2016 and 2017 funding. Users have the ability to use the filters to customize their search, for example by cluster, geography, organization type and year. Donors have direct reporting line on how their funds were spent and supported urgent humanitarian needs.

landing page

<http://bit.ly/2SJm3dB>

Interactive dashboard

<http://bit.ly/2SJlqRh>



## HUMANITARIAN DATA EXCHANGE (HDX)

The Humanitarian Data Exchange (HDX) is an open platform for sharing data across crises and organisations. Launched in July 2014, the goal of HDX is to make humanitarian data easy to find and use for analysis. Our growing collection of datasets has been accessed by users in over 200 countries and territories.

Palestine page

<https://data.humdata.org/group/pse>