



United Nations Office for the Coordination of Humanitarian Affairs

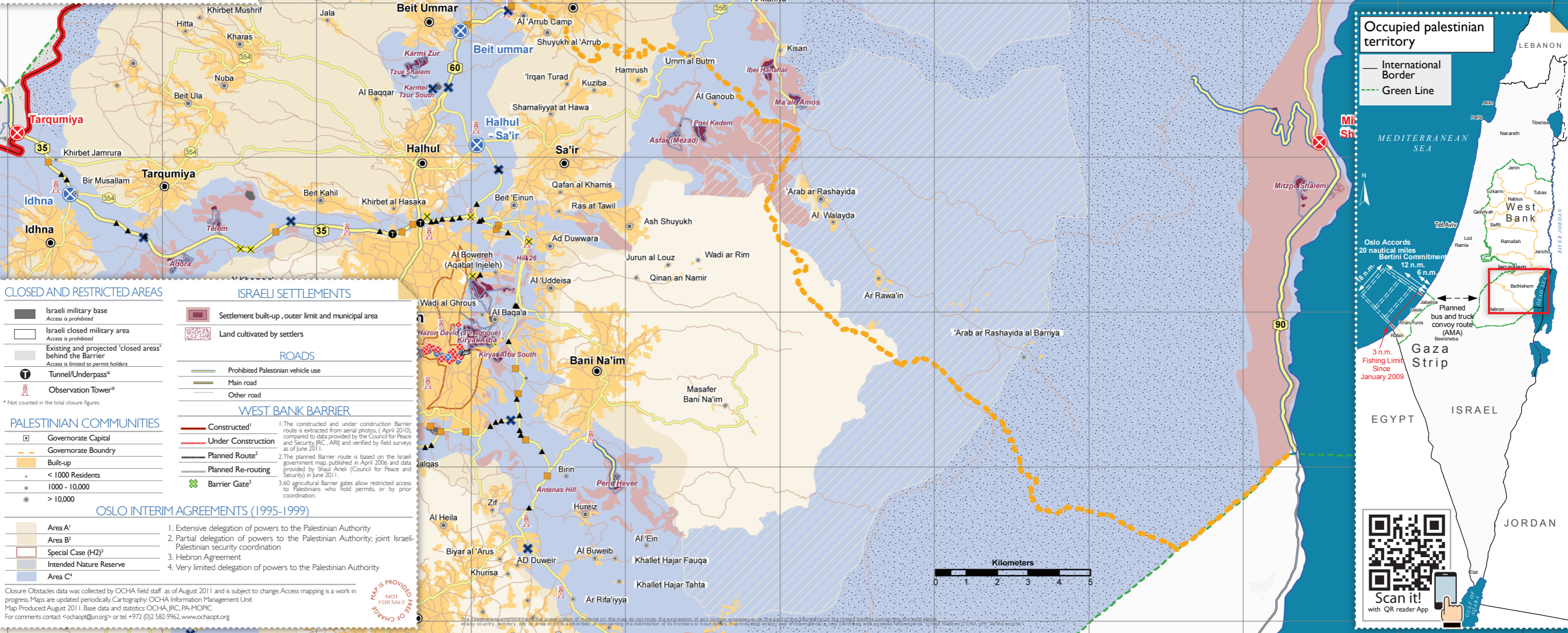
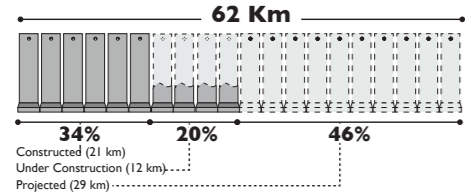
WEST BANK ACCESS RESTRICTIONS - BETHLEHEM

DECEMBER 2011

BETHLEHEM CLOSURES

	Checkpoints	7
	Green Line Checkpoints	1
	Partial Checkpoints	1
	Earthmounds	6
	Roadblocks	2
	Road Gates	6
	Trenches	-
	Earth Walls	2 - 1,230m
	Road Barriers	-
TOTAL		24

THE BARRIER IN BETHLEHEM



CLOSED AND RESTRICTED AREAS

- Israeli military base
Access is prohibited
- Israeli closed military area
Access is prohibited
- Existing and projected 'closed areas' behind the Barrier
Access is limited to permit holders
- Tunnel/Underpass*
- Observation Tower*

ISRAELI SETTLEMENTS

- Settlement built-up, outer limit and municipal area
- Land cultivated by settlers

ROADS

- Prohibited Palestinian vehicle use
- Main road
- Other road

PALESTINIAN COMMUNITIES

- Governorate Capital
- Governorate Boundary
- Built-up
- < 1000 Residents
 - 1000 - 10,000
 - > 10,000

WEST BANK BARRIER

- Constructed¹
- Under Construction
- Planned Route²
- Planned Re-routing
- Barrier Gate³

OSLO INTERIM AGREEMENTS (1995-1999)

- Area A¹
- Area B²
- Special Case (H2)³
- Intended Nature Reserve
- Area C⁴

Closure Obstacles data was collected by OCHA field staff as of August 2011 and is subject to change. Access mapping is a work in progress. Maps are updated periodically. Cartography: OCHA Information Management Unit. Map Produced: August 2011. Base data and statistics: OCHA, JRC, PA, MOPIC. For comments contact: <ochaopt@un.org> or tel. +972 (0)2 582-9962, www.ochaopt.org

Occupied Palestinian territory

- International Border
- Green Line



Planned bus and truck convoy route (AMA) Beersheba

3 n.m. Fishing Limit Since January 2009

