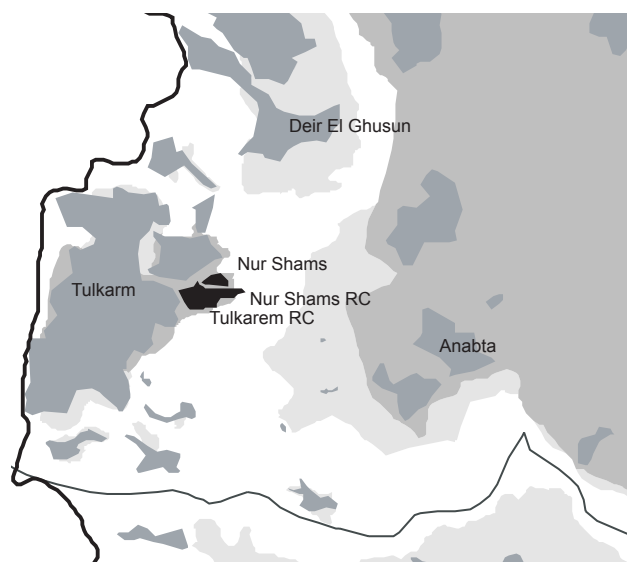
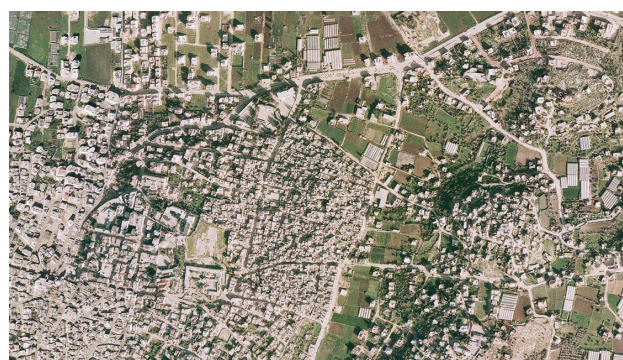


Tulkarem Refugee Camp Profile



source: Good Shepherd Engineering and Computing Company, Bethlehem/ date: 2005



source: OFEK aerial photography LTD/ date: 2005

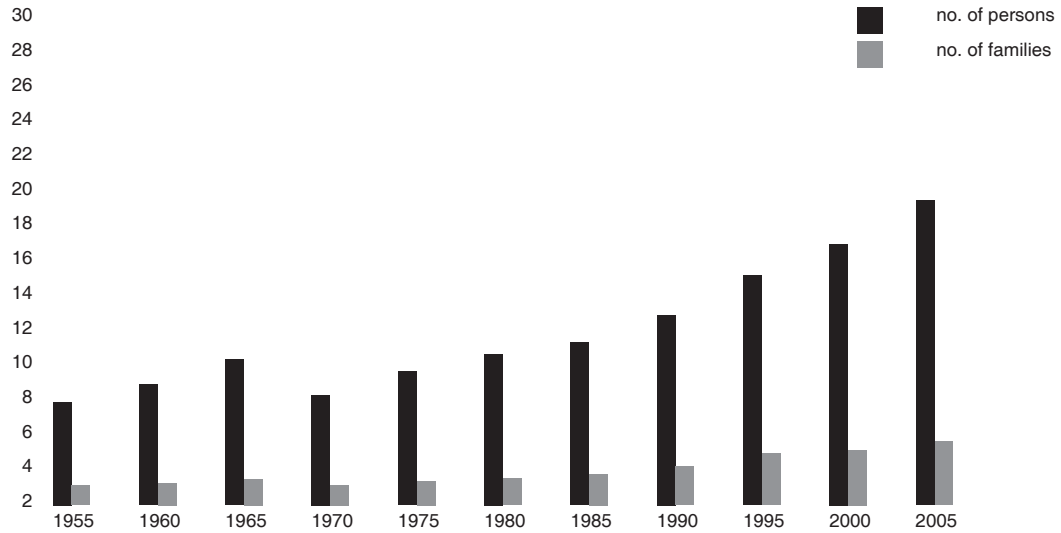
1. General Information

HQ or Field	West Bank
Camp name/ area	Tulkarem Camp/ Nablus Area
Location	One Km east of Tulkarem city
Status of camp	official camp
Year of establishment	1950
Legal status of land	private land (100%), government land (0%), see notes below
Historical background/Places of origin	The camp was established in 1950. Original inhabitants came from various villages and cities in the Haifa, Jaffa and Kissaria areas, in particular from Wadi Al Hawareth, Al Damayreh, Qaqoun and Arab Nujeat.
Area at establishment (UNRWA records)	180 dunums/ 0.180 km sq
Area at present (CD Pilot Research Project, 2006)	180 dunums/ 0.180 km sq
Notes	All West Bank camps were set up on plots of land leased by UNRWA from the Hashemite Kingdom of Jordan (ref. Agreement between the Government of the Hashemite Kingdom of Jordan and UNRWA, 14/03/1951). No lease agreement with private individuals. When camps were established, most of the land was already state land, while small private plots had been leased by the host government from local landowners

2. Demographic Profile

UNRWA registered camp population at establishment	8,450 persons (UNRWA record before March 1967)		
UNRWA registered camp population at present	18,310 persons (UNRWA Registration Statistical Bulletin/ Q4 2007)		
Estimated actual camp residents inside UNRWA's official camp boundaries	total:	12,800 (estimate by CSO, 2007)	
	local camp code:	12,394 (estimate by CSO, 2007)	
	other camp codes:	255 (estimate by CSO, 2007)	
	non-refugees:	151 (estimate by CSO, 2007)	
Gender (HHE Study/ WB Field, 2nd half 2007)	M	49.7%	
	F	50.3%	
Age groups (HHE Study/ WB Field, 2nd half 2007)	0-14	39.4%	
	15-24	20.8%	
	25-60	34.5%	
	over 60	5.3%	
Age average (HHE Study/ WB Field, 2nd half 2007)	23.6		
Marital status > 14 years of age (RSSP/ WB Field, Dec. 2007)	single	M 46.5%	F 48.0%
	married	M 52.9%	F 42.4%
	divorced	M 0.4%	F 1.7%
	widow	M 0.2%	F 7.9%
Average family size (HHE Study/ WB Field, 2nd half 2007)	4.8		
Average household size (HHE Study/ WB Field, 2nd half 2007)	5.5		

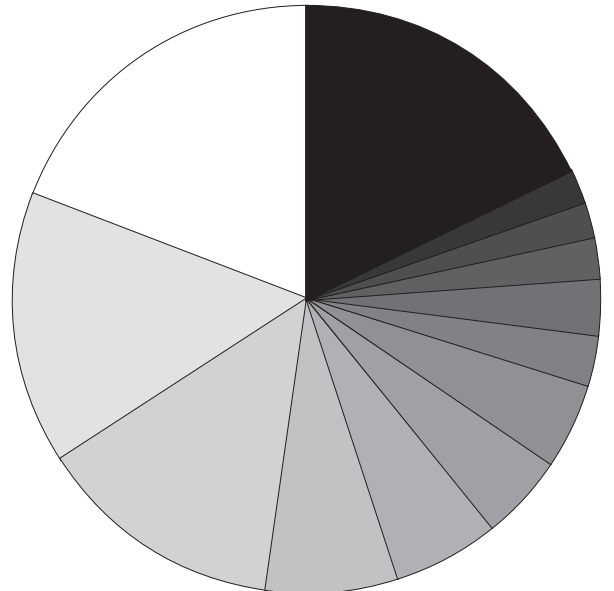
Demographic development



source: UNRWA Department of Relief and Social Services, WB Field, 2005

Places of origin with camp code

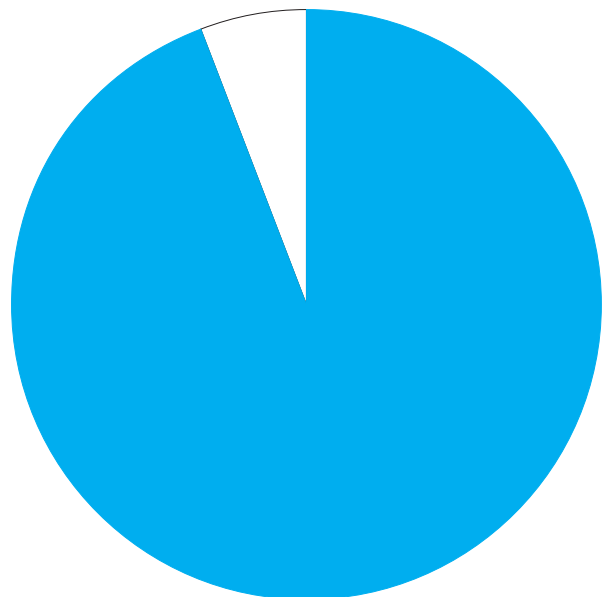
- other
- Bureika
- Ghubaiyat
- Abu Shusha
- Mansi
- Lajjun
- Sindyana
- Ein Ghazal
- Ijzim
- Kafrin
- Qannir
- Umm Ez Zeinat
- Sabbrein



source: UNRWA Department of Relief and Social Services, WB Field, 2005

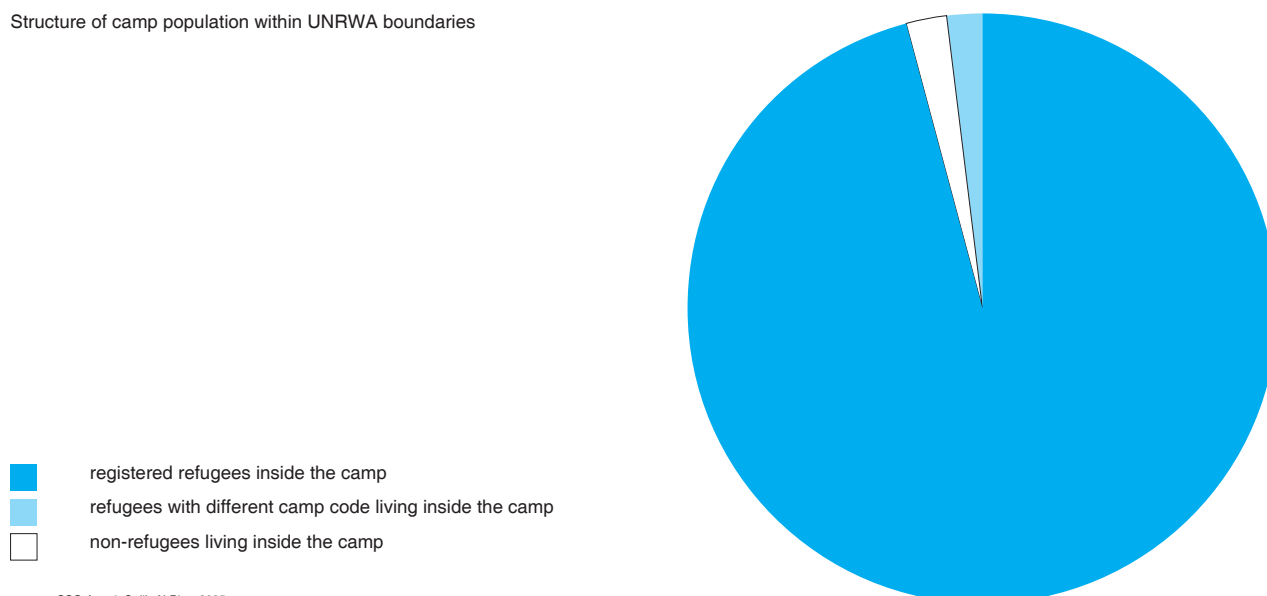
Out-migration of refugees with camp code

- registered refugee live inside camp
- registered refugee live outside camp



source : Estimate by Galib Al-Biss (CSO Amari), 2005

Structure of camp population within UNRWA boundaries



source : CSO Amari, Galib Al-Biss, 2005

3. Spatial/ Physical Conditions

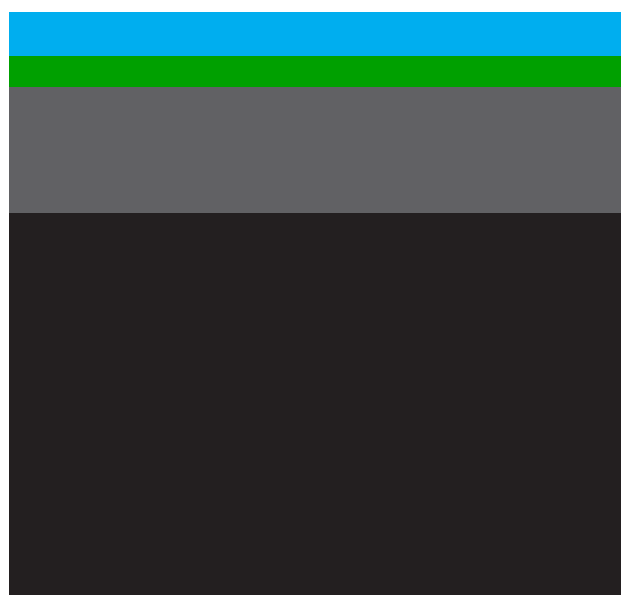
No of shelters at establishment (UNRWA records)	401 units built by UNRWA		
No of shelters at present (Engineering Dept., WB Field, 2005)	1,644 units including upper floors		
Building materials (HHE Study/ WB Field, 2nd half 2007)	stone	0.3%	
	lconcrete	6.9%	
	cement bricks	92.5%	
	asbestos, wood, zinc	0.1%	
	cloth, mud, staw	0.1%	
	other	0.1%	
Verticalisation/ number of floors (CSO/ 2007)	ground floor	15%	
	1 floor	75%	
	2 floor	7%	
	more than 2 floors	3%	
Estimation of density (UNRWA CD Pilot Research Project, 2006)	est. actual population/ total area (Hac)	616.7 person/hac	
	(UNRWA CD Pilot Research Project, 2006)	percentage of built up area	68.5%
	(CD Pilot Research Project, 2006 based on floor area estimate by CSO)	Floor Space Index FSI (built up area x avarage no. of floors / total area)	1.23
Names of main quarters & blocks	NA		
External communal/ public spaces (CSO/2007)	playgrounds	0	
	parks	0	
	football fields	0	
	other open spaces used by residents	0	
	Vehicles and parking (CSO/2007)	There are 360 vehicles in the camp, 35 of which are public.	
Notes			

4. Technical Infrastructure/ Services

Water supplier (UNRWA Sanitation Division /WB Field,2007)	Tulkarem Municipality	
Owner of distribution network (UNRWA Sanitation Division /WB Field,2007)	Tulkarem Municipality	
Average water available per person (UNRWA Sanitation Div./WB , 2007)	90 l/ day (capacity)	
Water quality (UNRWA Sanitation Division /WB Field,Dec 2007)	100% of water sample meeting WHO standards for bacteriology test	
Water supply to individual shelters	100% (all shelters have indoor water connection)	
Electrical services (CSO/2007)	Tulkarem Municipality (100% of shelters)	
Provider for telecommunications (land lines)	PAL-COM (Palestinian)	
Sewer disposal facilities	cesspits	no
	public sewage network	yes (owner: Tulkarem Municipality)
	private sewage connection (sharing)	no
	open channels	no
Solid waste collection services (garbage collection)	UNRWA	yes
	dumped on road sides/ vacant lots	yes
Storm-water drainage	yes	
Road surfaces (CSO/2007)	asphalt	35%
	unpaved	4%
	concrete	61%

Internal spatial distribution

- UNRWA service area include open gardens and open areas
- private open spaces include private paved and garden areas
- streets/ paths
- built up area exclude UNRWA building



source : Camp Development Pilot Research Project, 2006

No. of sanitation labourers (Needs Assessment Report/ WB Field, Jun. 2008) 16

Notes	All garbage is collected by UNRWA sanitation labourers and disposed at Tulkarem municipality dump side by UNRWA compactor truck. UNRWA asphalted approximately 35% of camp roads and concreted the remaining pathways with the assistance of the local camp committee. Road maintenance is mainly done by UNRWA. The main road of the camp is in need of maintenance. During heavy rain in winter, an old sewage line connected unofficially to the storm-water drainage causes flood of dirty water (up to 30-40cm) especially in the schools area.
-------	--

5. Socio-Economic Profile

(RSSP/WB Field, Dec, 2007)	Special Hardship Cases (SHC)	415 families
	emergency cases	2,500 families
	beneficiaries of MMD (2007)	90 (total value loans \$78,248)
Household poverty rate (HHE Study/ WB Field, 2nd half 2007)	55.1% (39.4% absolute poverty)	
Average monthly household income (HHE Study/ WB Field, 2nd half 2007)	NIS 1,722	
Employment statistics (HHE Study/ WB Field, 2nd half 2007)	employment rate	65.9%
	female employment rate	NA
Unemployment statistics (HHE Study/ WB Field, 2nd half 2007)	unemployment rate	34.1% (ILO Definition)
	female unemployment rate	NA

Classification of active labour force (HHE Study/ WB Field, 2nd half 2007)	UNRWA employees	12%
	public sector	30%
	private sector	56%
	Inter/NGO organisations	2%
Number of commercial stores (CSO/2007)	182	
Location of commercial activity (CSO/2006)	Most of the shops surround the camp service office and are located along the main road.	
Commercial sector rating (CSO & UNRWA Research Office/WB,2006)	Groceries & mini-markets	27%
	Butchers	11%
	Electronics & appliances	8%
	Restaurants, bars, coffee shops	7%
	Hairdressers, beauty saloon	7%
Other economic activity (CSO, 2007)	workshops	NA
	factories	0
	other	NA
Owners of enterprises (CSO/2007)	camp residents	100%
	residents of neighboring areas	0%
Customers of enterprises (CSO/2007)	camp residents	90%
	from outside the camp	10%
Notes	Unemployed people mainly resorted to small businesses in the camp and bigger shops in Jenin city.	

6. Organisations/ Programmes/ Activities

UNRWA services within refugee camps (2007)	Camp Service Office (CSO)	1
	Boys schools	2 (elementary /2 shifts 706, prep. 392)
	Girl schools	3 (element.415, prep. 632)
	Health centre	1 (6,345 active family files)
	Physiotherapy Unit	1
	Distribution Centre	1
Level of education (HHE Study/ WB Field, 2nd half 2007)		
% of individuals with health insurance (HHE Study/ WB Field, 2nd half 2007)	91.7%	
Other institutions: NGOs, CBOs (CSO/2007)	Women Programme Centre	1
	Youth Activity Centre	1
	Children Centre	0
	Kindergartens	4
	Health clinics	2 (1 private, 1 dentist)
	Community Based Rehab. Centre	1
	Other communal organisations	1 mosque
		1 Qaqoun Association
Local Committees/ Popular Committees	Head of Local Committee	NA
	number of active members	NA
	location of LC building	NA
	date of establishment	NA
	main activities in the camp	NA
Notes		