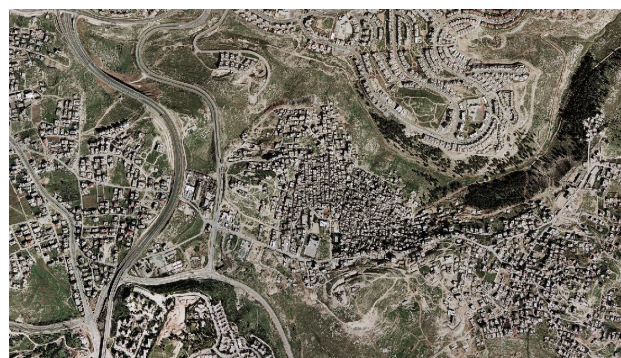




source: Good Shepherd Engineering and Computing Company, Bethlehem/ date: 2005



source: OFEK aerial photography LTD/ date: 2005

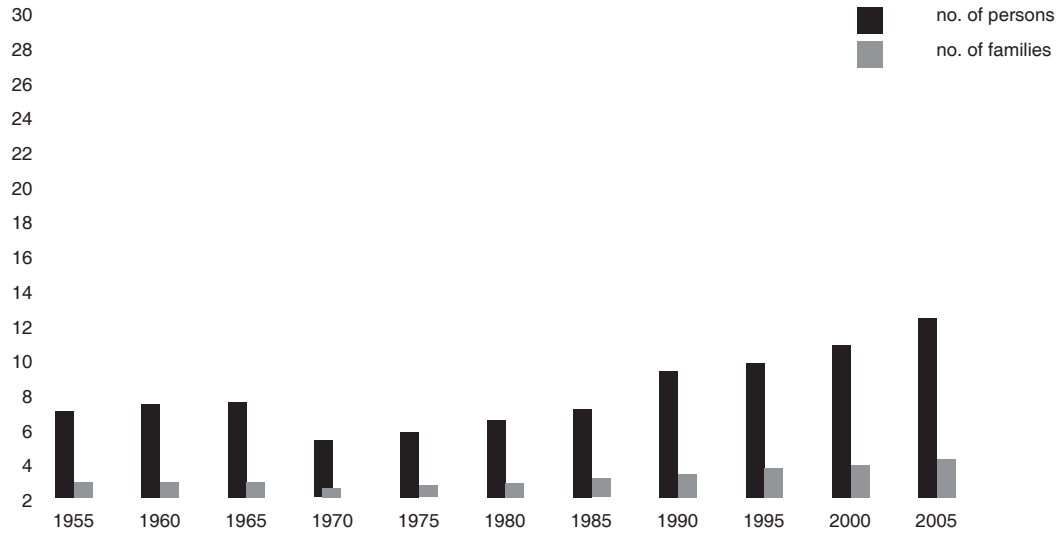
## 1. General Information

HQ or Field	West Bank
Camp name/ area	Shufat Camp/ Jerusalem Area
Location	North-eastern edge of Jerusalem, 3 km away from the City
Status of camp (official, non-official, gathering)	official camp
Year of establishment	1965
Legal status of land	private land (100%) (including 4% Custodian of Enemy Property), government land (0%), see notes below
Historical background	The camp was established to accommodate refugees previously living in Mu'skar camp. Mu'skar was located in the Sharaf quarter of Jerusalem Old City, now known as the Jewish quarter. Unsanitary conditions led to the closure of Mu'skar and the moving of camp dwellers to Shu'fat.
Places of origin	Residents originate from 55 villages in the Jerusalem, Lydd, Jaffa and Ramleh area. In particular for Jerusalem, they came from Qatamon, Beit Thoul, Al Walajeh, Lifta and Malha.
Area at establishment (UNRWA records)	203 dunums/ 0.203 km sq
Area at present (CD Pilot Research Project, 2006)	203 dunums/ 0.203 km sq
Notes	All West Bank camps were set up on plots of land leased by UNRWA from the Hashemite Kingdom of Jordan (ref. Agreement between the Government of the Hashemite Kingdom of Jordan and UNRWA, 14/03/1951). No lease agreement with private individuals. When camps were established, most of the land was already state land, while small private plots had been leased by the host government from local landowners.

## 2. Demographic Profile

UNRWA registered camp population at establishment	3,368 persons (UNRWA record before March 1967)	
UNRWA registered camp population at present	10,936 persons (UNRWA Registration Statistical Bulletin/ Q4, 2007)	
Estimated actual camp residents inside UNRWA's official camp boundaries	total:	18,000 (estimate by CSO, 2007)
	local camp code:	11,800 (estimate by CSO, 2007)
	other camp codes:	2,000 (estimate by CSO, 2007)
	non-refugees:	5,200 (estimate by CSO, 2007)
Gender (RSSP/ WB Field, Dec. 2007)	M	52%
	F	48%
Age groups (RSSP/ WB Field, Dec. 2007)	0-14	36.0%
	15-24	21.6%
	25-60	37.0%
	over 60	5.4%
Age average (RSSP/ WB Field, Dec. 2007)	25.0	
Marital status > 14 years of age (RSSP/ WB Field, Dec. 2007)	single	M 43.1% F 47.2%

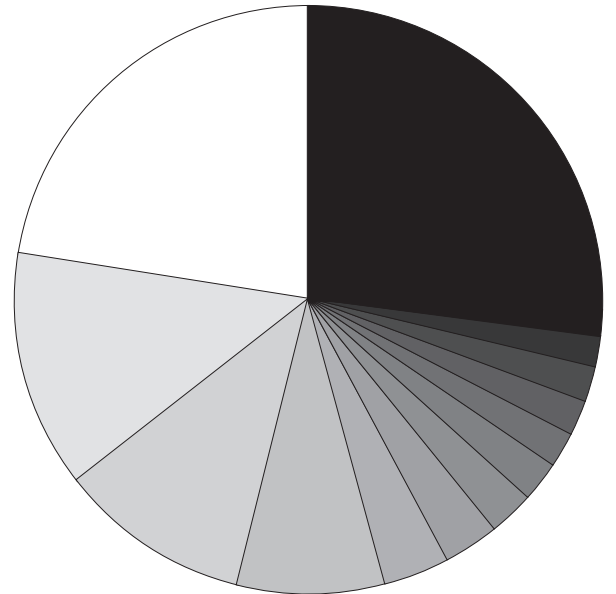
Demographic development



source: UNRWA Department of Relief and Social Services, WB Field, 2005

Places of origin with camp code

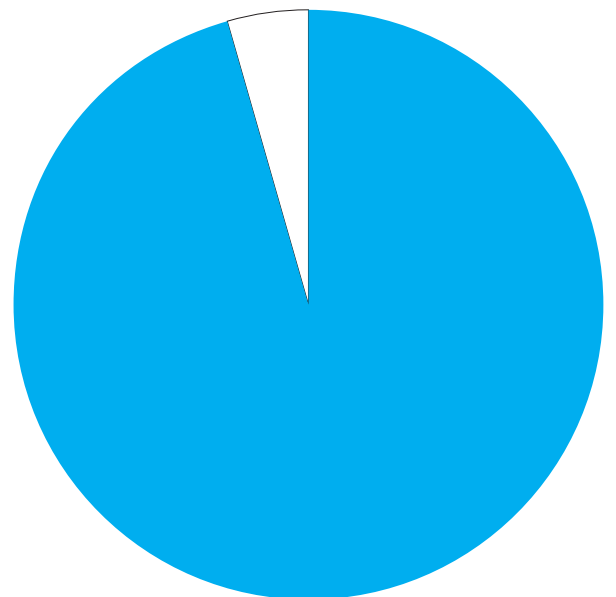
- other
- Dawaiyma
- Beit Nattif
- Deir Ayoub
- BARQUSIYA
- Jaffa
- Jerusalem Old City
- Walaja
- Malha
- Bir Main
- Jerusalem
- Lydda
- Beit Thul



source: UNRWA Department of Relief and Social Services, WB Field, 2005

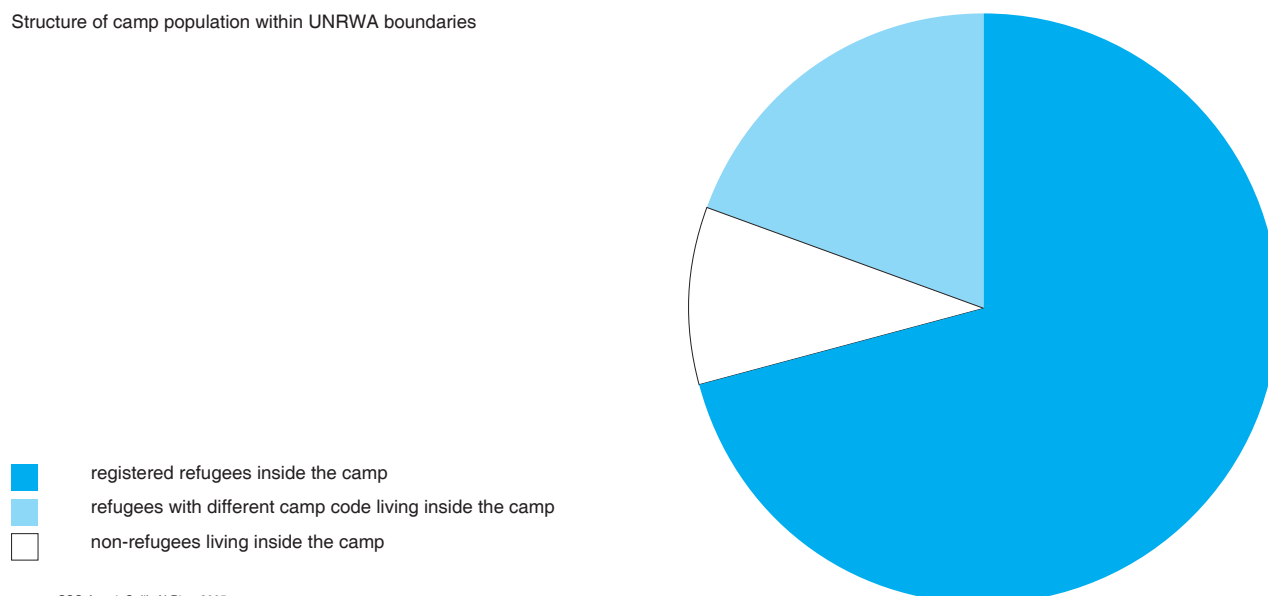
Out-migration of refugees with camp code

- registered refugee live inside camp
- registered refugee live outside camp



source : Estimate by Galib Al-Biss (CSO Amari), 2005

## Structure of camp population within UNRWA boundaries



source : CSO Amari, Galib Al-Biss, 2005

	married	M 56.5%	F 46.8%
	divorced	M 0.0%	F 1.7%
	widow	M 0.3%	F 4.3%
Average family size (RSSP/ WB Field, 2007)	4.6		
Average household size	NA		

### 3. Spatial/ Physical Conditions

No of shelters at establishment (UNRWA records)	500 units built by UNRWA	
No of shelters at present (CSO/ 2007)	1,350 units, including upper floors	
Building materials (CSO/ 2007)	stone	0%
	load bearing hollow block	0%
	concrete frame and hollow block	100%
	mud	0%
	other (correg. zinc, temp. materials)	0%
Verticalisation/ number of floors (CSO/ 2007)	ground floor	3%
	1 floor	20%
	2 floor	30%
	more than 2 floors	47%
Estimation of density (CD Pilot Research Project, 2006)	est. actual population/ total area (Hac)	762.0 person/hac
(CD Pilot Research Project, 2006)	percentage of built up area	56.9%
(CD Pilot Research Project, 2006 based on floor area estimate by CSO)	Floor Space Index FSI (built up area x average no. of floors / total area)	1.56
Names of main quarters & blocks	NA	
External communal/ public spaces (CSO/ 2007)	playground	1
	parks	0
	football fields	0
	other open spaces used by residents	0
Vehicles and parking (CSO/ 2007)	There are more than 2,000 private and 150 public vehicles in the camp.	
Notes		

#### 4. Technical Infrastructure/ Services

Water supplier (UNRWA Sanitation Division /WB Field,2007)	Mekorot (Israeli)	
Owner of distribution network (UNRWA Sanitation Division/WB Field,2006)	Water Local Committee and Gihon Water Company (Israeli water supplier)	
Average water available per person (UNRWA Sanitation Div/WB Field,2007)	140 l/ day (capacity)	
Water quality (UNRWA Sanitation Div./WB Field, Dec. 2007)	100% of water sample meeting WHO Standards for bacteriology test	
Water supply to individual shelters (per cent)	100% (all shelters have indoor water connection)	
Electrical services (CSO/2007)	Jerusalem District Electrical Company (100% of shelters)	
Provider for telecommunications (land lines) (CSO/2007)	Bezeq (Israeli)	
Sewer disposal facilities	cesspits	no
	public sewage network	yes (owner: Municipal Sewerage Network, Israel)
	private sewage connection (sharing)	no
	open channels	no
Solid waste collection services (garbage collection)	UNRWA	yes
	dumped on road sides/ vacant lots	no
Storm-water drainage	yes	
Road surfaces (CSO/ 2007)	asphalt	70%
	unpaved	0%
	concrete	30%

Internal spatial distribution

- UNRWA service area include open gardens and open areas
- private open spaces include private paved and garden areas
- streets/ paths
- built up area exclude UNRWA building



source : Camp Development Pilot Research Project, 2006

Notes	All shelters are connected to Gihon either legally or illegally, and have in-door
door	connection.
	All garbage is collected by UNRWA sanitation labourers and disposed at Al Eizarye dump side by UNRWA compactor truck.
	About 1,500 m size 80-100 cm storm water drainage was built by UNRWA, and 500 m size 20 cm completed under UNRWA Job Creation Programme in 2006. UNRWA asphalted approximately 70% of the camp's roads, and concreted the remaining pathways with the assistance of Local Camp Committee. Maintenance is mainly accomplished by UNRWA.

#### 5. Socio-Economic Profile

(RSSP/WB Field, 2007)	Special Hardship Cases (SHC)	0
	emergency cases	0
	beneficiaries of MMD	0
Average monthly household income (CSO/2007)	NIS 4,000	
Employment statistics (CSO/ 2007)	male employment rate	80%
	female employment rate	NA
Unemployment statistics	male unemployment rate	NA
	female unemployment rate	NA
Classification of active labour force (CSO/ 2007)	UNRWA employees	1%

	public sector	1%
	private sector	2%
	Israel - private sector	70%
	self employed	26%
Number of commercial stores (CSO/ 2007)	250	
Location of commercial activity (CSO/ 2007)	The majority located on the main street at the entrance of the camp	
Commercial sector rating (CSO&UNRWA Research Office/WB Field, 2006)	1. Grocery & minimarket	33%
	2. Electronics & appliances	8%
	3. Butchery	8%
	4. Clothes & shoes	5%
Other economic activity (CSO/2007)	workshops	11 (3 smithery, 3 carpentry, and 5 aluminum workshops)
	factories	0
	other	0
Owners of enterprises (CSO/ 2007)	camp residents	90%
	residents of neighboring areas	10%
Customers of enterprises (CSO/ 2007)	camp residents	90%
	from outside the camp	10%
Notes		

## 6. Organisations/ Programmes/ Activities

UNRWA services within refugee camps (2007)	Camp Service Office (CSO)	1
	Boys schools	1 (elementary 450, prep. 480)
	Girl schools	1 (element.908, prep.948)
	Health centre	1 (2,091 active family files)
	Physiotherapy Unit	1
	Distribution Centre	0
	Employment Guidance Centre	0
Other institutions: NGOs, CBOs (CSO/ 2007)	Private school	2 (Ahab Ar-Rahman, Al-Faqeeh)
	Health clinics	5 (3 dentists, 2 Israeli institutions - Klaleet and Liumeet)
	Women's Programme Centre	1
	Youth Activity Centre	1 (inactive)
	Children's Centre	1 (Palestinian Child Centre)
	Kindergartens	7
	Community Based Rehab. Centre	1
	Other communal organisations	1 mosque
		1 Zakat Committee
Local Committees/ Popular Committees	Head of Local Committee	
	number of active members	
	location of LC building	
	date of establishment	
	main activities in the camp	
Notes		

**FOR INTERNAL USE ONLY**

---

**7. Initiatives by External Organisations/ Authorities**

Initiatives by Host Governments

Initiatives by local municipalities

Initiatives by external NGOs and local/ international donors

Notes

**8. Additional Notes**

**9. Apparent Needs**

(source/ date)

**10. Available Sources/ References**

Physical surveys (buildings, infrastructure)	year/ area covered	department/ body
Housing condition surveys	year/ area covered	department/ body
Area survey	year/ area covered	department/ body
Digital plan	year/ area covered	department/ body
Socio-economic survey	year/ area covered	department/ body
Other specialized surveys (business mapping, gender analysis, etc.)	year/ area covered	department/ body

last updated

person responsible for last update

# Shufat Camp

(table X)



### Legend

- - camp boundary
- UNRWA installations inside camp boundary
- 1 health centre
- 2 camp services office
- 3 girl's school
- 4 boy's school
- 5 water tank

source: UNRWA / WB / Town Planning Unit, 2007