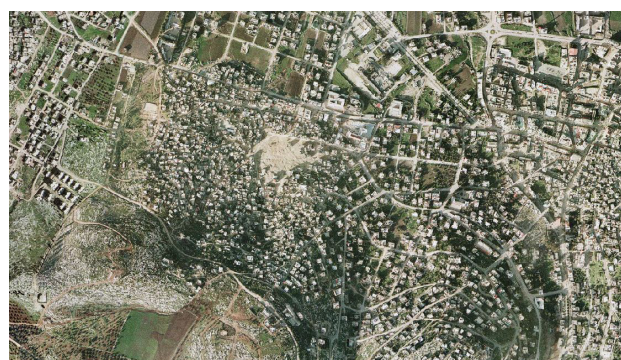


source: Good Shepherd Engineering and Computing Company, Bethlehem/ date: 2005



source: OFEK aerial photography LTD/ date: 2005

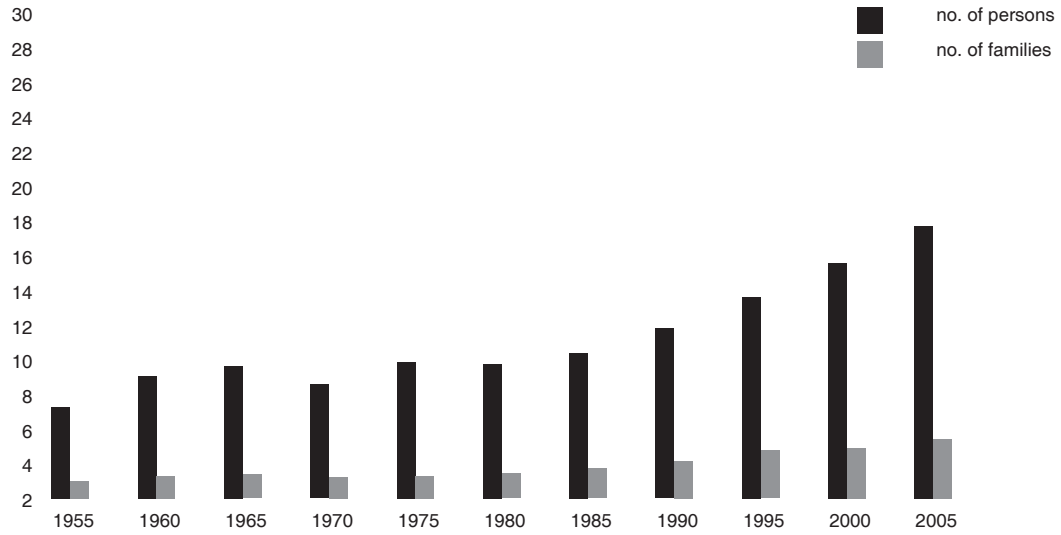
## 1. General Information

HQ or Field	West Bank
Camp name/ area	Jenin Camp/ Nablus Area
Location	one km west of Jenin city, on the site of an old British mandate railway station and military camp
UNRWA camp code	1656
Status of camp (official, non-official, gathering)	official camp
Year of establishment	1953
Legal status of land	private land (43%), government land (57%), see notes below
Historical background	original inhabitants came from the Carmel region in Haifa and the Carmel mountains, up to Marj Bin Amer and Wadi Araba.
Places of origin	People are mixed up and no distinct family members' gathering was found or explicit in the camp.
Area at establishment (UNRWA records)	373 dunums/ 0.373 km sq
Area at present	423 dunums/ 0.423 km sq (estimation of 50 dunums after 2004 constructions)
Notes	All West Bank camps were set up on plots of land leased by UNRWA from the Hashemite Kingdom of Jordan (ref. Agreement between the Government of the Hashemite Kingdom of Jordan and UNRWA, 14/03/1951). No lease agreement with private individuals. When camps were established, most of the land was already state land, while small private plots had been leased by the host government from local landowners

## 2. Demographic Profile

UNRWA registered camp population at establishment	8,450 persons (UNRWA record before March 1967)	
UNRWA registered camp population at present	16,209 persons (UNRWA Registration Statistical Bulletin/ Q4, 2007)	
Estimated actual camp residents inside UNRWA's official camp boundaries	total:	12,264 (estimate by CSO, 2007)
	local camp code:	11,850 (estimate by CSO, 2007)
	other camp codes:	150 (estimate by CSO, 2007)
	non-refugees:	264 (estimate by CSO, 2007)
Gender (HHE Study/ WB Field, 2nd half 2007)	M	49.1%
	F	50.9%
Age groups (HHE Study/ WB Field, 2nd half 2007)	0-14	41.3%
	15-24	19%
	25-60	34.8%
	over 60	4.9%
Age average (HHE Study/ WB Field, 2nd half 2007)	23.2	
Marital status > 14 years of age (RSSP/ WB Field, Dec. 2007)	single	M 44.8% F 43.8%
	married	M 54.8% F 46.0%
	divorced	M 0.1% F 1.6%

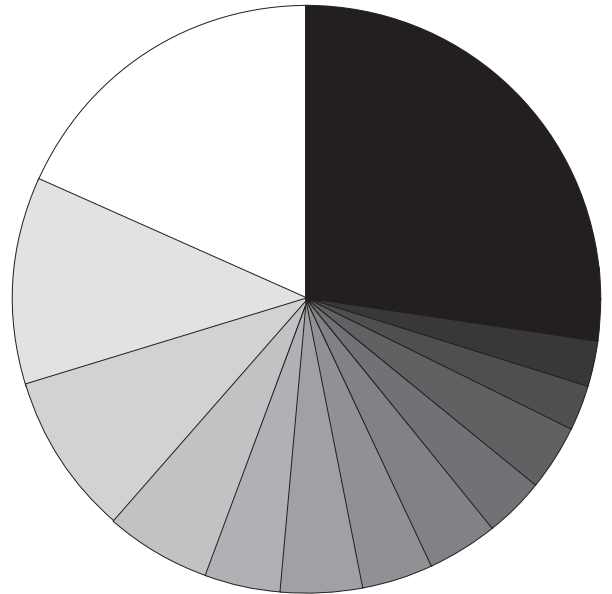
Demographic development



source: UNRWA Department of Relief and Social Services, WB Field, 2005

Places of origin with camp code

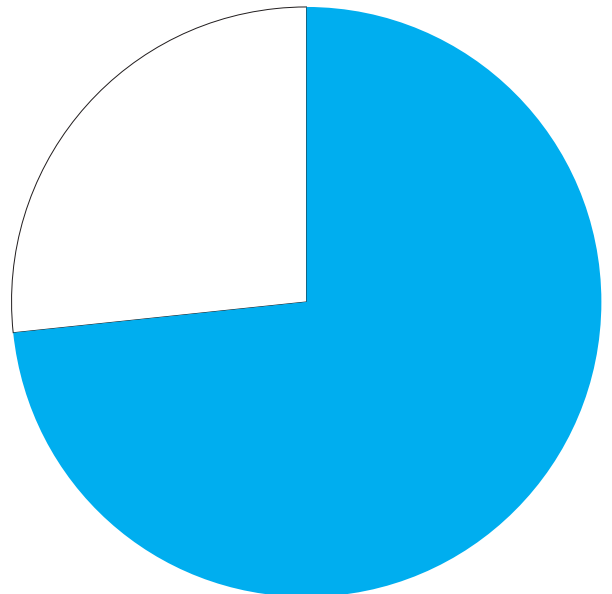
- other
- Lajjun
- Qannir
- Sindiyana
- Bureika
- Sabbarein
- Nuris
- Ein Haud
- Mazar
- Kafrin
- Ijzim
- Ghubaiyat
- Haifa



source: UNRWA Department of Relief and Social Services, WB Field, 2005

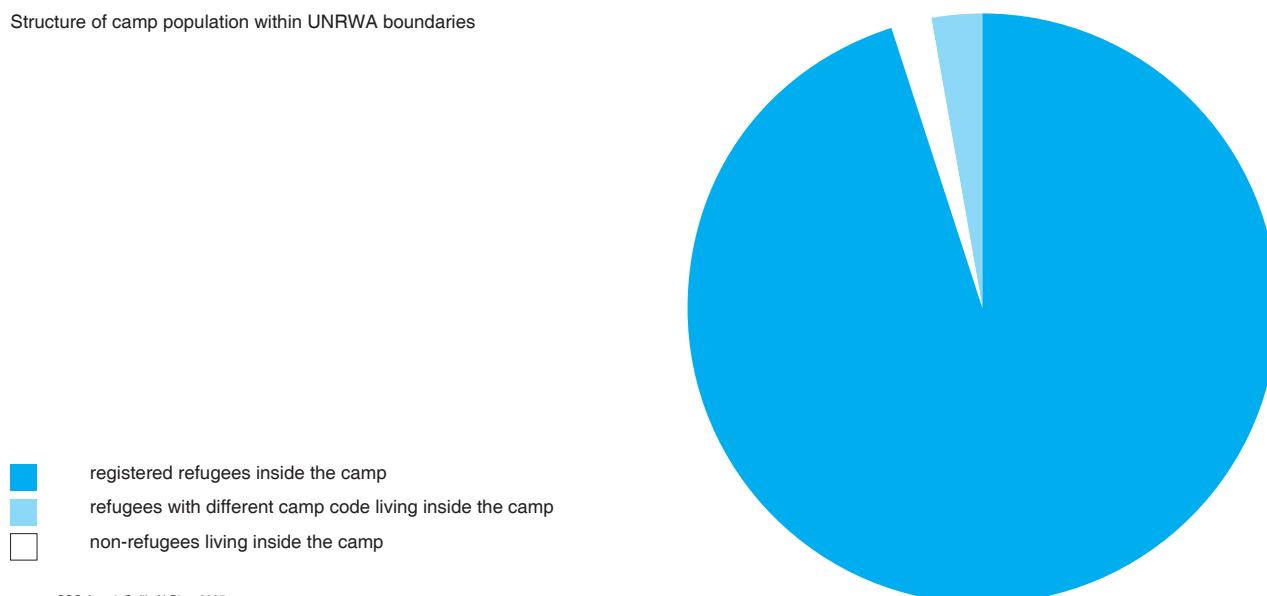
Out-migration of refugees with camp code

- registered refugee live inside camp
- registered refugee live outside camp



source : Estimate by Galib Al-Biss (CSO Amari), 2005

## Structure of camp population within UNRWA boundaries



source : CSO Amari, Galib Al-Biss, 2005

	widow	M 0.3%	F 8.5%
Average family size (HHE Study/ WB Field, 2nd half 2007)	5.1		
Average household size (HHE Study/ WB Field, 2nd half 2007)	5.2		

### 3. Spatial/ Physical Conditions

No of shelters at establishment (UNRWA records)	50 units built by UNRWA		
No of shelters at present (CSO/2007)	1,280 units, including upper floors		
Building materials (CSO/ 2007)	stone	1%	
	load bearing hollow block	0%	
	concrete frame and hollow block	99%	
	mud	0%	
	other (correg. zinc, temp. materials)	0%	
Verticalisation/ number of floors (CSO/ 2007)	ground floor	2%	
	1 floor	90%	
	2 floor	7%	
	more than 2 floors	1%	
Estimation of density (CD Pilot Research Project, 2006)	est. actual population/ total area (Hac) 246.7 persons/ hac		
(CD Pilot Research Project, 2006)	percentage of built up area 30.6%		
(CD Pilot Research Project, 2006 based on floor area estimate by CSO)	Floor Space Index FSI (built up area x avarage no. of floors / total area) 0.85		
Names of main quarters & blocks	Dir Tarif, Jaffa, Lifta, Lydd, Malha, Na'ani, Ramleh, Salameh		
External communal/ public spaces (CSO/2007)	playground	1	
	football fields	0	
	other open spaces used by residents	0	
Vehicles and parking (CSO/ 2007)	There are more than 200 private and public vehicles in the camp. They are parked in front or beside shelters, which makes alleyways even narrower.		
Notes	The main road in the camp ,connecting the camp to Jenin city, is 1,000 meters long and 8-10 meters wide. Internal alleys cover an overall area of 12,324 m2, of which 6,000 in need of rehabilitation.		
	They have an average width ranging from 0.2 to 0.4 meter; all were paved with concrete. Maintenance is accomplished mainly by UNRWA.		

#### 4. Technical Infrastructure/ Services

Water supplier (UNRWA Sanitation Division/ WB Field, 2007)	Jenin Municipality	
Owner of distribution network (UNRWA Sanitation Division/ WB Field,2007)	Jenin Municipality	
Average water available per person (UNRWA Sanitation Div./WB Field,07)	95 l/ day (capacity)	
Water quality (potable water, etc.) (UNRWA Sanitation Div./WB Field,07)	100% of water sample meeting WHO standards for bacteriology test	
Water supply to individual shelters (per cent)	100% (all shelters have indoor water connection)	
Electrical services (CSO/2007)	Jenin Municipality (100% of shelters)	
Provider for telecommunications (land lines) (CSO/2007)	PAL-COM (Palestinian)	
Sewer disposal facilities (CSO/2007)	cesspits	no (only 3 shelters)
	public sewage network	yes (owner: UNRWA)
	private sewage connection (sharing)	no
	open channels	no
Solid waste collection services (garbage collection)	UNRWA	yes
	dumped on road sides/ vacant lots	no
Storm-water drainage	yes (established in 2006)	
Road surfaces (CSO/ 2007)	asphalt	80%
	unpaved	0%
	concrete	20%
No. of sanitation labourers (Needs Assessment Report/ WB Field, Jun. 2008)	18	

Internal spatial distribution

- private open spaces include private paved and garden areas
- streets/ paths/ public area
- built up area



source : Camp Development Pilot Research Project, 2006

#### Notes

There is no participatory community arrangement for preserving the camp environment. Households dispose solid garbage in plastic bags, without separating degradable and non-degradable products, in 12 garbage containers which are available in the camp. UNRWA sanitation labourers collect waste, and a UNRWA compactor daily transports it from containers to the Jenin municipality dumping-site.

The sewerage network was financed by the Italian government and established by UNRWA. The existing network covered the whole camp area with the only exception of 5 houses which are currently using septic pits. The low land houses tended to suffer from congestion problems, ultimately solved by adding new lines and cesspits. The camp sewerage network is connected to main municipality network, which ends up 3 km far from the camp.

#### 5. Socio-Economic Profile

(RSSP/WB Field, Dec. 2007)	Special Hardship Cases (SHC)	372 families
	emergency cases	2,206 families
	beneficiaries of MMD (2007)	15 (total value loans \$20,339)

Household poverty rate (HHE Study/ WB Field, 2nd half 2007)		60.6% (46.5% absolute poverty)
Average monthly household income (HHE Study/ WB Field, 2nd half 2007)		NIS 1,865
Employment statistics (CSO/2007)	male employment rate	25%
	female employment rate	NA
Unemployment statistics	male unemployment rate	NA
	female unemployment rate	NA
Classification of active labour force (CSO/2007)	UNRWA employees	10%
	public sector	60%
	private sector	20%
	Israel - private sector	0%
	self-employed	10%
	others	0%
Number of commercial stores (CSO/ 2007)		250
Location of commercial activity (CSO/ 2006)	The majority of shops and workshops stretch along the main street in the camp. Only one central in the middle of the camp sells fruits and vegetables.	
Commercial sector rating (CSO & UNRWA Research Office/WB Field,2006)	1. Grocery & minimarket	43%
	2. Manufacturing/selling of const. materials	8%
	3. Butchery	7%
	4. Hairdresser/Beauty saloon	6%
Other economic activity (CSO/2007)	workshops	13
	other	0
Owners of enterprises (CSO/ 2007)	camp residents	97%
	residents of neighboring areas	3%
Customers of enterprises (CSO/ 2007)	camp residents	90%
	from outside the camp	10%
Notes	A relative increase in the total number of enterprises was noticed as a result of the high unemployment rate due to inaccessibility to the Israeli labour market. Unemployed people mainly started small business, e.g. having a stall on the main road.	

## 6. Organisations/ Programmes/ Activities

UNRWA services within refugee camps (2007)	Camp Service Office (CSO)	1
	Boys schools	1 (element. 890 /2 shifts, prep. 510)
	Girls schools	1 (element.497, prep.856)
	Health centre	1 (7,426 active family files)
	Physiotherapy Unit	1
	Distribution Centre	1
	Employment Guidance Centre	0
Level of education (HHE Study/ WB Field, 2nd half 2007)		
% of individuals with health insurance (HHE Study/ WB Field, 2nd half 2007)		60%
Other institutions: NGOs, CBOs (CSO/ 2007)	Women Programme Centre	1
	Youth Activity Centre	1
	Children Centre	3
	Kindergartens	4
	Clinic	1 (private dental)
	Community Based Rehab. Centre	1
	Other communal organisations	4 mosques
Notes		