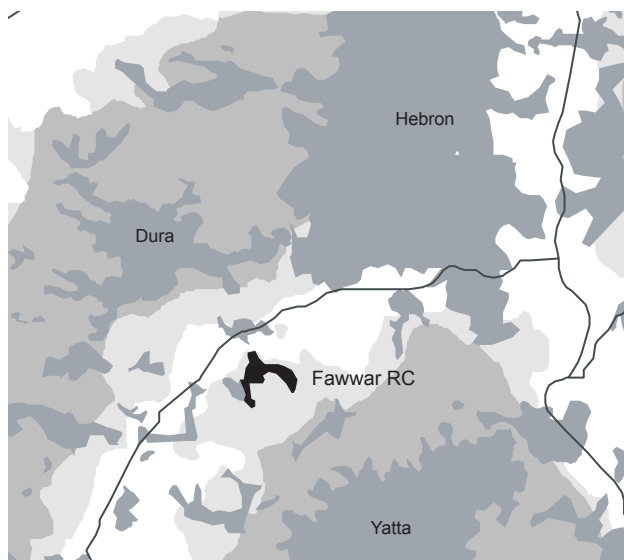
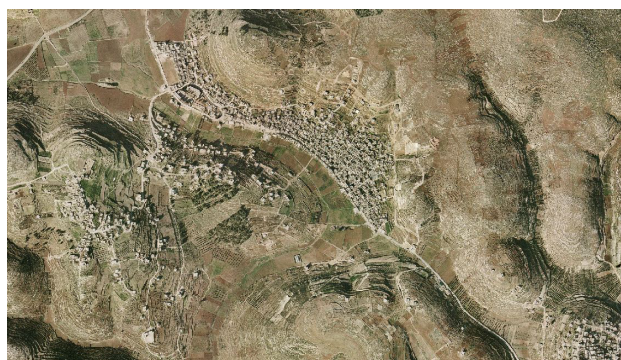


# Fawwar Refugee Camp Profile



source: Good Shepherd Engineering and Computing Company, Bethlehem/ date: 2005



source: OFEK aerial photography LTD/ date: 2005

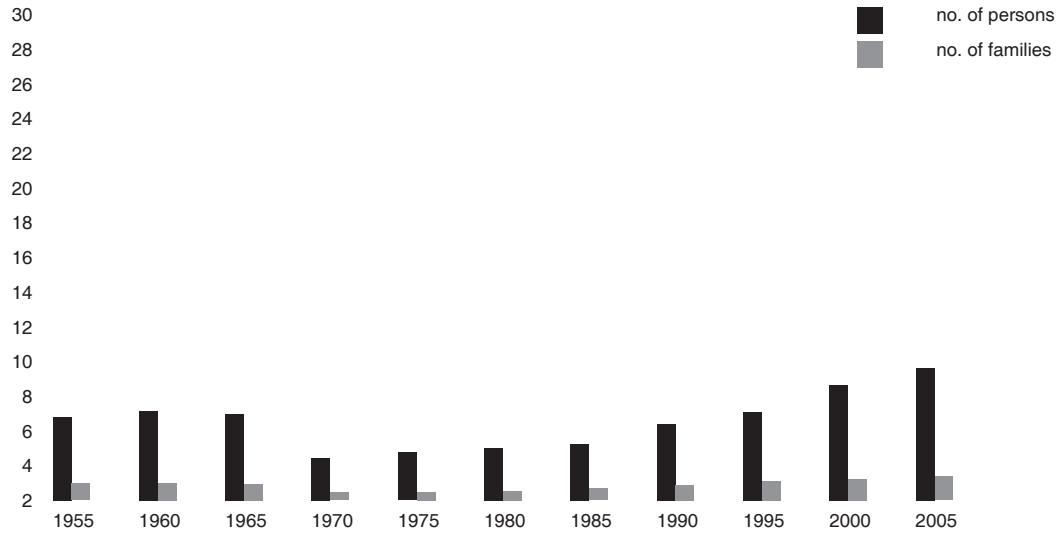
## 1. General Information

HQ or Field	West Bank
Camp name/ area	Fawwar Camp / Hebron Area
Location	South of Hebron, on the main road between Hebron and Dahrieh
Status of camp (official, non-official, gathering)	Official camp
Year of establishment	1949
Legal status of land	Private land (100%), government land (0%), see notes below
Historical background	Original inhabitants came from 18 villages in the Gaza, Hebron and Beersheva areas, mainly Iraq Al Manshiyeh, Al Falouje, Simsim; and Beit Jibrin, Ajjour, Tel Al Safi, Deir Al Tubban, Smeil, Al Dawaymeh and Qudneh.
Places of origin	Some families descend from the same origin or village, such as Al Titi, Al Shawab keh, Awad, Nassar and As Sarahneh neighbourhood.
Area at establishment (UNRWA records)	273 dunums/ 0.273 km sq
Are at present (CD Pilot Research Project, 2006)	274 dunums/ 0.274 km sq
Notes	All West Bank camps were set up on plots of land leased by UNRWA from the Hashemite Kingdom of Jordan (ref. Agreement between the Government of the Hashemite Kingdom of Jordan and UNRWA, 14/03/1951). No lease agreement with private individuals. When camps were established, most of the land was already state land, while small private plots had been leased by the host government from local landowners

## 2. Demographic Profile

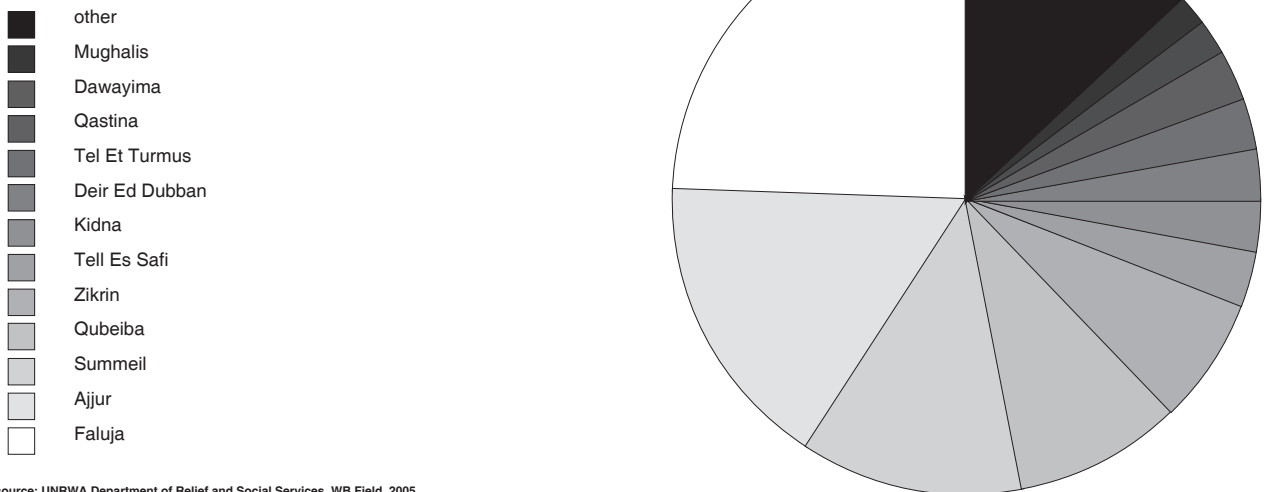
UNRWA registered camp population at establishment	5,056 persons (UNRWA record before March 1967)	
UNRWA registered camp population at present	8,066 persons (UNRWA Registration Statistical Bulletin/ Q4 2007)	
Estimated actual camp residents inside UNRWA's official camp boundaries	total:	7,000 (estimate by CSO, 2007)
	local camp code:	6,980 (estimate by CSO, 2007)
	other camp codes:	10 (estimate by CSO, 2007)
	non-refugees:	10 (estimate by CSO, 2007)
Gender (HHE Study/ WB Field, 2nd half 2007)	M	51.2%
	F	48.8%
Age groups (HHE Study/ WB Field, 2nd half 2007)	0-14	45.9%
	15-24	20%
	25-60	30.7%
	over 60	3.5%
Age average (HHE Study/ WB Field, 2nd half 2007)	20.9	
Marital status > 14 years of age (RSSP/ WB Field, Dec. 2007)	single	M 49.1 % F 41.6 %
	married	M 50.7 % F 50.1 %
	divorced	M 0 % F 0.7 %
	widow	M 0.2 % F 7.4 %
Average family size (HHE Study/ WB Field, 2nd half 2007)	5.6	

Demographic development



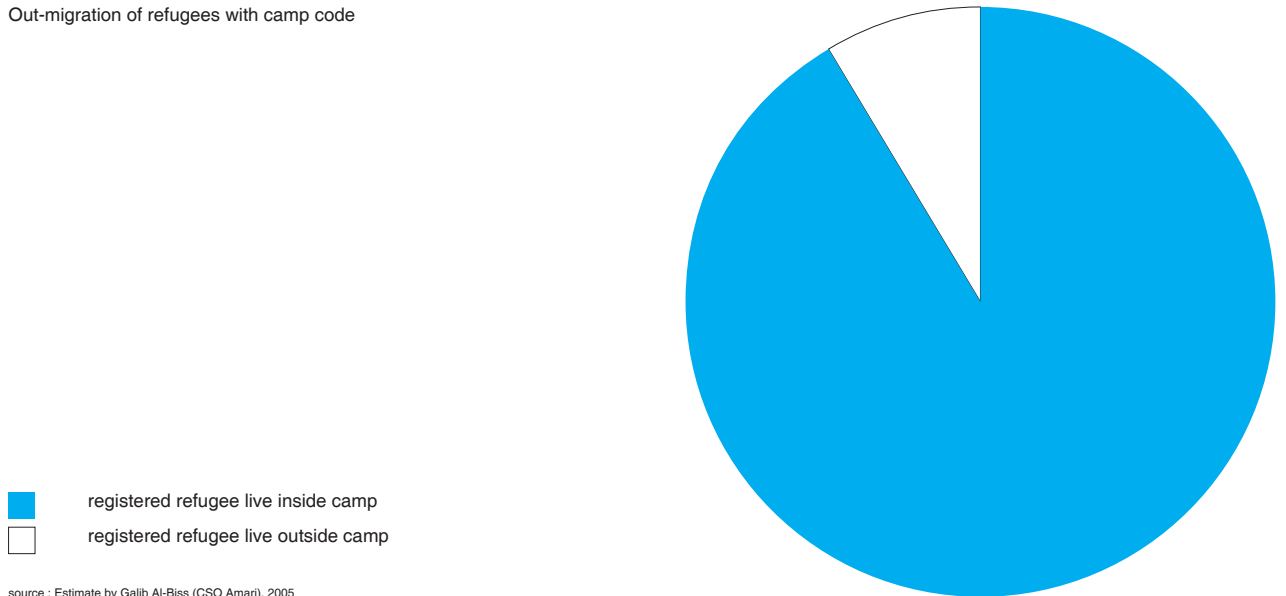
source: UNRWA Department of Relief and Social Services, WB Field, 2005

Places of origin with camp code



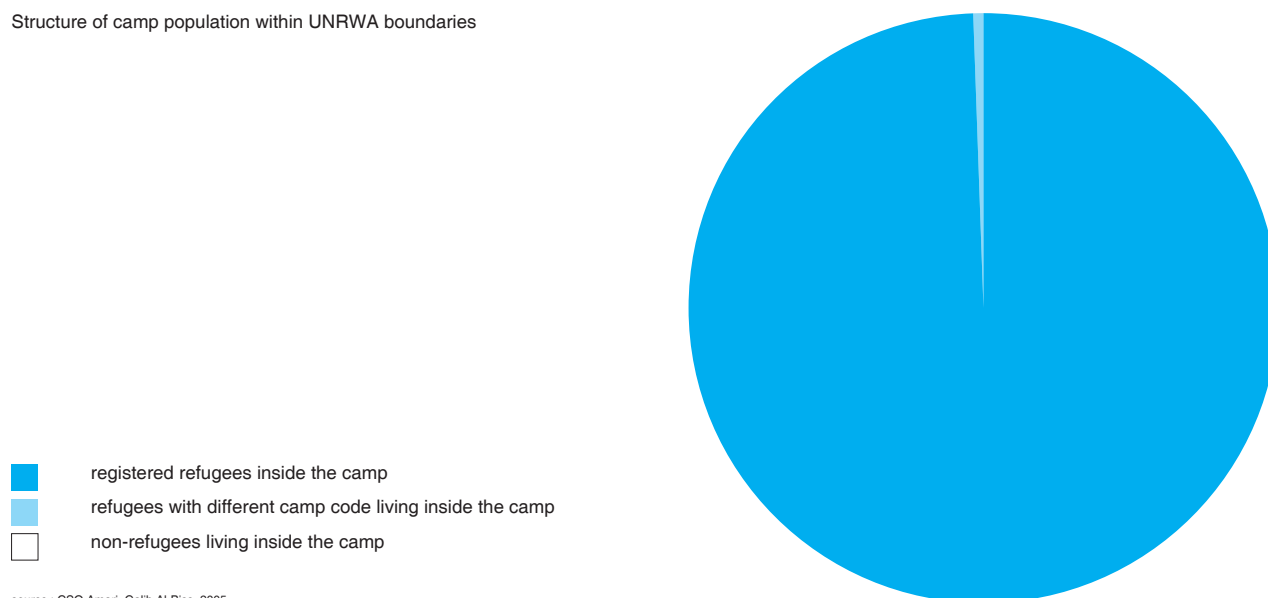
source: UNRWA Department of Relief and Social Services, WB Field, 2005

Out-migration of refugees with camp code



source : Estimate by Galib Al-Biss (CSO Amari), 2005

Structure of camp population within UNRWA boundaries



source : CSO Amari, Galib Al-Biss, 2005

Average household size (HHE Study/ WB Field, 2nd half 2007) 6.1





**3. Spatial/ Physical Conditions**

No of shelters at establishment (UNRWA records)	800 units built by UNRWA	
No of shelters at present (CSO/2007)	1,300 units, including upper floors	
Building materials (HHE Study/ WB Field, 2nd half 2007)	stone	11.8%
	concrete	3.5%
	cement bricks	83.1%
	asbestos, wood, zinc	0%
	cloth, wood, straw	0%
	other	1.5%
Verticalisation/ number of floors (CSO/ 2007)	ground floor	25%
	1 floor	70%
	2 floor	5%
	more than 2 floors	0%
Estimation of density (CD Pilot Research Project, 2006)	est. actual population/ total area (Hac) 256.6 person/hac	
(CD Pilot Research Project, 2006)	percentage of built up area	37.6%
(CD Pilot Research Project, 2006 based on floor area estimate by CSO)	Floor Space Index FSI (built up area x average no. of floors / total area)	0.75
Names of main quarters & blocks	NA	
External communal/ public spaces	playgrounds	0
	parks	0
	football fields	0
	other open spaces used by residents	0
Vehicles and parking (CSO/2007)	There are more than 150 private and public vehicles in the camp. 80% are parked in front or beside shelters, which makes alleyways even narrower.	
Notes		

#### 4. Technical Infrastructure/ Services

Water supplier (UNRWA Sanitation Division /WB Field, 2007)	Hebron Municipality	
Owner of distribution network (UNRWA Sanitation Div/WB Field, 2007)	Hebron Municipality & Local Committee	
Average water available per person (UNRWA Sanitation Div/WB Field, 2007)	81 l/ day (capacity)	
Water quality (UNRWA Sanitation Division/WB Field, Dec. 2007)	100% of water sample meeting WHO standards for bacteriology test	
Water supply to individual shelters (per cent)	100% (all shelters have indoor water connection)	
Electrical services	Israeli Electrical Company (100% of shelters)	
Provider for telecommunications (land lines)	PAL-COM (Palestinian)	
Sewer disposal facilities	cesspits	yes
	public sewage network	yes
	private sewage connection (sharing)	no
	open channels	no
Solid waste collection services (garbage collection)	UNRWA	yes
	dumped on road sides	yes
Storm-water drainage	yes (all connected to the sewer system)	
Road surfaces (CSO/2007)	asphalt	15 %
	unpaved	15 %
	concrete	70%
No. of sanitation labourers (Needs Assessment Report/ WB Field, Jun. 2008)	9	

Internal spatial distribution

-  UNRWA service area include open gardens and open areas
-  private open spaces include private paved and garden areas
-  streets/ paths
-  built up area exclude UNRWA building



source : Camp Development Pilot Research Project, 2006

Notes:

The great majority of shelters (95%) are connected to public sewerage network, while about 5% have private latrines connected to percolation pits. CSO Fawar highlighted that the sewerage network is in urgent need for maintenance. All garbage is collected by UNRWA sanitation labourers, put in 12 larger containers then disposed outside the camp by UNRWA compactor truck. The camp water network was recently renewed by the German Development Bank in cooperation with the Camp Local Committee.

#### 5. Socio-Economic Profile

(RSSP/WB, Dec. 2007)	Special Hardship Cases (SHC)	179 families
	emergency cases	879 families
	beneficiaries of MMD	0
Household poverty rate (HHE Study/ WB Field, 2nd half 2007)	34.6% (21.1% absolute poverty)	
Average monthly household income (HHE Study/ WB Field, 2nd half 2007)	NIS 1,590	
Employment statistics (HHE Study/ WB Field, 2nd half 2007)	employment rate	68.1%
	female employment rate	NA
Unemployment statistics (HHE Study/ WB Field, 2nd half 2007)	unemployment rate	31.9% (ILO Definition)
	female unemployment rate	NA
Classification of active labour force (HHE Study/ WB Field, 2nd half 2007)	UNRWA employees	13%

	public sector	46%
	private sector	40%
	Inter/NGO organisations	2%
Number of commercial stores (CSO/2006)	105	
Location of commercial activity (CSO/2006)	The majority of the shops stretch along the main street while few small groceries are established within the home premises. A public market exist for all commercial activities.	
Commercial sector rating (CSO & UNRWA Research Office/ WB, 2006)	1. Grocery & minimarket	41%
	2. House and kitchen items	8 %
	3. Manufacturing of const. materials	7%
	4. Clothes & shoes	7 %
Other economic activity (workshops, factories, etc.) (CSO/2007)	workshops	13 (iron/aluminum works and mechanincs)
	factories	2 hollow blocks
		1 plastic factory
	other	NA
Owners of enterprises (CSO/2007)	camp residents	95 %
	residents of neighboring areas	5 %
Customers of enterprises (CSO/2007)	camp residents	95%
	from outside the camp	5%
Notes	A relative increase in the total number of enterprises was noticed as a result of the high unemployment rate due to inaccessibility to the Israeli labour market.	

## 6. Organisations/ Programmes/ Activities

UNRWA services within refugee camps (2007)	Camp Service Office (CSO)	1
	Boys schools	1 (element 700, prep. 341/2 shifts)
	Girl schools	1 (element.454 , prep.566)
	Health centre	1 (1,515 active family files)
	Physiotherapy Unit	0
	Distribution Centre	1
	Employment Guidance Centre	0
Level of education (HHE Study/ WB Field, 2nd half 2007)		
% of individuals with health insurance (HHE Study/ WB Field, 2nd half 2007)	54.3%	
Other institutions: NGOs, CBOs (CSO/2007)	Women's Programme Centre	1
	Youth Activity Centre	1
	Children Centre	1
	Secondary school	1 (PA)
	Kindergartens	4
	Health clinics	4 (1 Social Network Ass., 1 private, 2 dentists)
	Community Based Rehab. Centre	1
	Zakat Committee	1
	Other communal organisations	4 mosque
		1 library
Local Committees/ Popular Committees (Head of the LC/ 2006)	Head of Local Committee	Muhamad Saleh El-Sous
	number of active members	9
	location of LC building	Main street near Mu'ath Ben jabal mosque
	date of establishment	1998
	Main activities in the camp:	
	1- Computer courses	
	2- Political and social meetings.	
	3- Supervision and follow up of camp's infrastructure projects.	
	4- Twin relationship with a French City (cultural exchange and financing some activities. Ex. computer lab.)	
	5- Financial aids to needy students and families.	
Notes	Eight NGOs operate in the camp: Save the Children, providing library service amusement activities and computer training; Alex Foundation implementing children's programmes and functioning as a clinic all week along, with nominal user fees; At-Tanweer Institution; Livestock institution offering services for raising animals.	