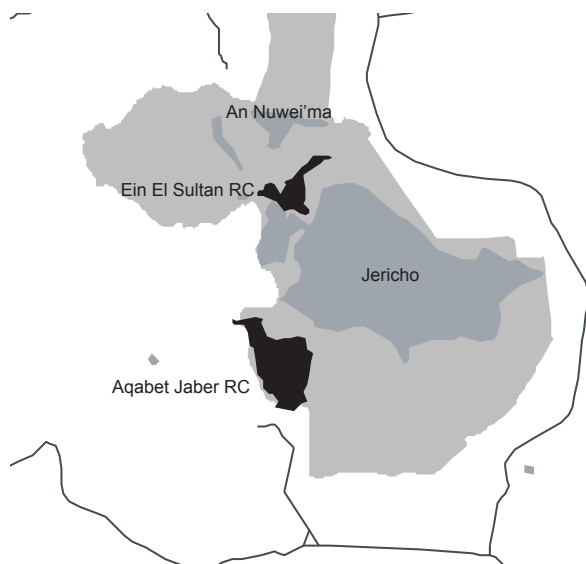
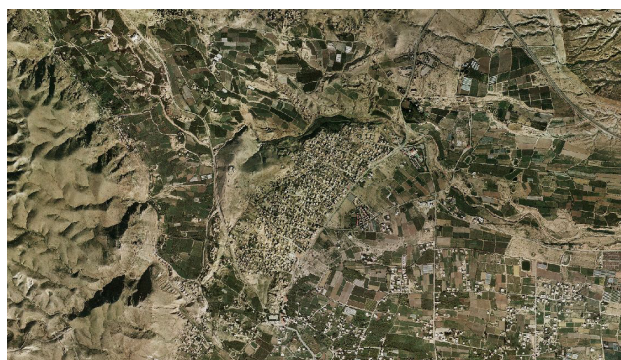


# Ein Sultan Refugee Camp Profile



source: Good Shepherd Engineering and Computing Company, Bethlehem/ date: 2005



source: OFEK aerial photography LTD/ date: 2005

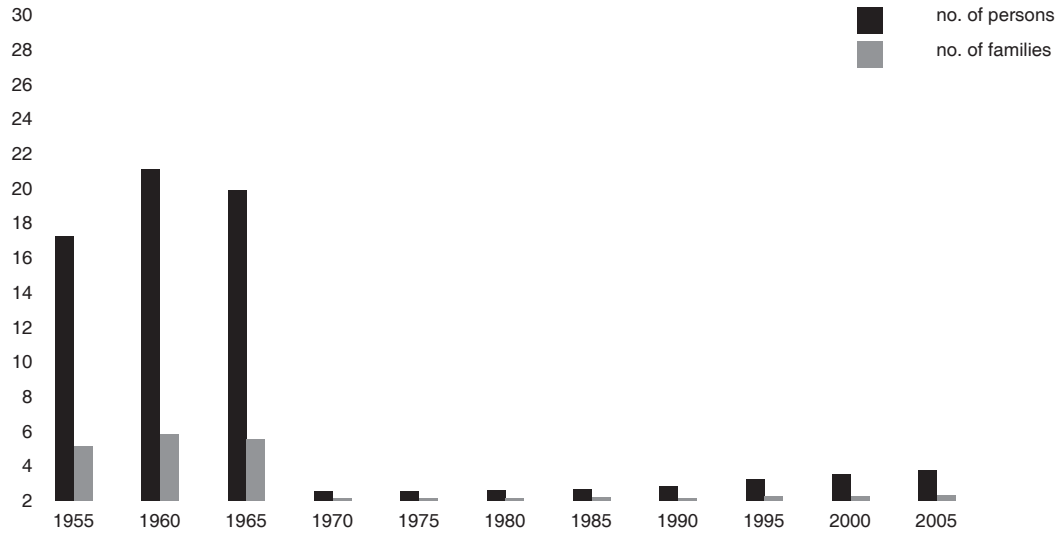
## 1. General Information

HQ or Field	West Bank
Camp name/ area	Ein Sultan Camp/ Jerusalem Area
Location	Nothern edge of Jericho, below the Mount of Temptation
Status of camp (official, non-official, gathering)	official camp
Year of establishment	1948
Legal status of land	private land (100%), government land (0%), see notes below
Historical background	original inhabitants came from all areas of historical Palestine. After the 1967 Israeli occupation of the West Bank, most camp resident fled to Jordan. Present residents originate from villages in the Ramleh, Lydd and Hebron areas, mainly Al Mansmiye, Al Khemen, Saja and Smeil Al Haditheh; Al Dawaymen, Aqzeh and lth Nibeh; Sarfund Al Kharran, Ajjour, Zakhariyeh and Al Abbasieh
Places of origin	some families descend from the same origin or village such as Abu Sharar, Ramoni, Isawi, Dawaheek and Manasrah
Area at establishment (UNRWA records)	870 dunums/ 0.870 km sq
Are at present (CD Pilot Research Project, 2006)	870 dunums/ 0.870 km sq
Notes	All West Bank camps were set up on plots of land leased by UNRWA from the Hashemite Kingdom of Jordan (ref. Agreement between the Government of the Hashemite Kingdom of Jordan and UNRWA, 14/03/1951). No lease agreement with private individuals. When camps were established, most of the land was already state land, while small private plots had been leased by the host government from local landowners

## 2. Demographic Profile

UNRWA registered camp population at establishment	19,467 persons (UNRWA record before March 1967)	
UNRWA registered camp population at present	1,920 persons (UNRWA Registration Statistical Bulletin/ Q4, 2007)	
Estimated actual camp residents inside UNRWA's official camp boundaries	total:	4,000 (estimate by CSO, 2007)
	local camp code:	3,000 (estimate by CSO, 2007)
	other camp codes:	600 (estimate by CSO, 2007)
	non-refugees:	400 (estimate by CSO, 2007)
Gender (HHE Study/ WB Field, 2nd half 2007)	M	50.1%
	F	49.9%
Age groups (HHE Study/ WB Field, 2nd half 2007)	0-14	42.8%
	15-24	21%
	25-60	33.6%
	over 60	2.6%
Age average (HHE Study/ WB Field, 2nd half 2007)	21.6	
Marital status > 14 years of age (RSSP/WB Field, Dec. 2007)	single	M 47.0% F 44.4%

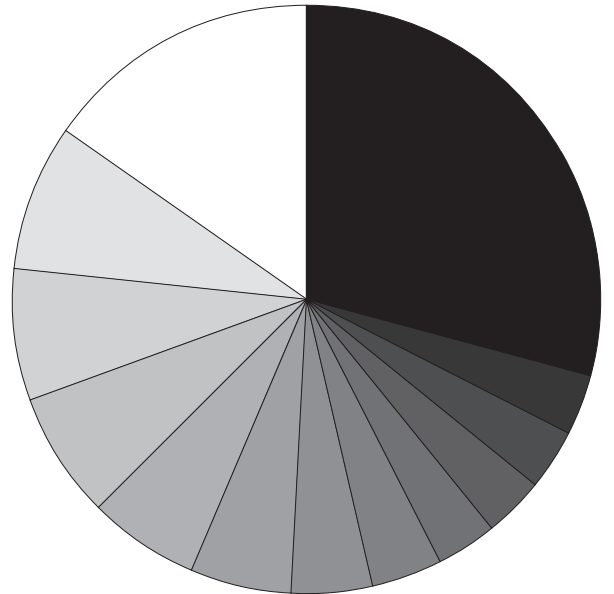
Demographic development



source: UNRWA Department of Relief and Social Services, WB Field, 2005

Places of origin with camp code

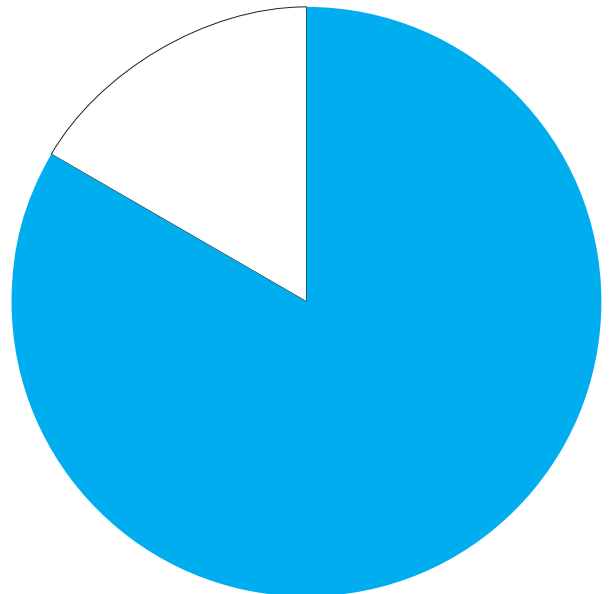
- other
- Rantiya
- Yazur
- Beersheba
- Qaluniya
- Jaffa
- Abbasiya
- Arab Er Rashaiyda
- Ajjur
- Sarafand
- El Kharab
- Ramle
- Arab El kaabin



source: UNRWA Department of Relief and Social Services, WB Field, 2005

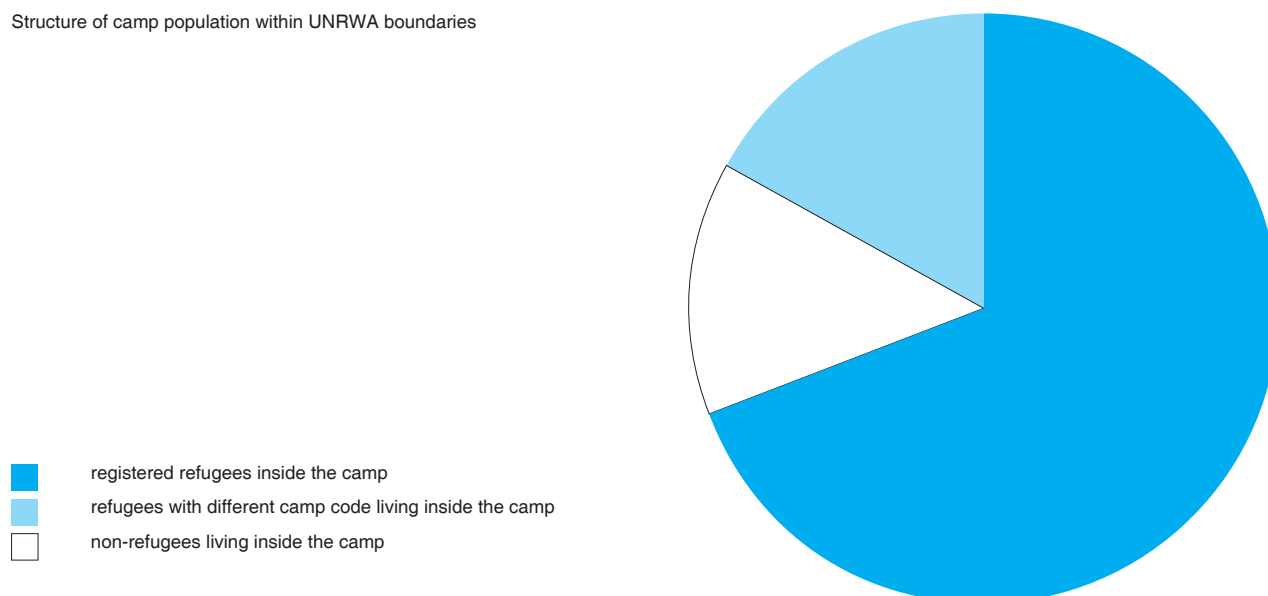
Out-migration of refugees with camp code

- registered refugee live inside camp
- registered refugee live outside camp



source : Estimate by Galib Al-Biss (CSO Amari), 2005

Structure of camp population within UNRWA boundaries



	married	M 52.6%	F 49.6%
	divorced	M 0.2%	F 0.6%
	widow	M 0.2%	F 5.4%
Average family size (HHE Study/ WB Field, 2nd half 2007)	5.2		
Average household size (HHE Study/ WB Field, 2nd half 2007)	5.5		





**3. Spatial/ Physical Conditions**

No of shelters at establishment (UNRWA records)	2,500 units built by UNRWA	
No of shelters at present (CSO/2007)	700 units, including upper floors	
Building materials (HHE Study/ WB Field, 2nd half 2007)	stone	3.8%
	lconcrete	3.2%
	cement bricks	83.6%
	asbestos, wood, zinc	0%
	cloth, mud, staw	0%
	other	0.5%
Verticalisation/ number of floors (CSO/2007)	ground floor	75%
	1 floor	20%
	2 floor	5%
	more than 2 floors	0%
Estimation of density (CD Pilot Research Project, 2006)	est. actual population/ total area (Hac)	24.8 person/hac
(CD Pilot Research Project, 2006)	percentage of built up area	17.6%
(CD Pilot Research Project, 2006 based on floor area estimate by CSO)	Floor Space Index FSI (built up area x avarage no. of floors / total area)	0.27
Names of main quarters & blocks	NA	
External communal/ public spaces (CSO/ 2007)	playground	1 (basketball playground)
	park	1
	football fields	0
	other open spaces used by residents	0
Vehicles and parking (CSO/ 2007)	There are more than 270 private and public vehicles (20) in the camp.	
Notes	95% of the vehicles park in private places and the rest on the sides of the road.	

#### 4. Technical Infrastructure/ Services

Water supplier (UNRWA Sanitation Division/ WB Field, 2007)	Local Water Committee	
Owner of distribution network (UNRWA Sanitation Division/ WB Field, 2007)	Local Water Committee	
Average water available per person (UNRWA Sanitation Div/WB Field, 2007)	128 l/ day (capacity)	
Water quality (UNRWA Sanitation Division/WB Field, Dec. 2007)	100% of water sample meeting WHO standards for bacteriology test	
Water supply to individual shelters (per cent)	100% (all shelters have indoor water connection)	
Electrical services (CSO/2007)	Jerusalem District Electrical Company (100% of shelters)	
Provider for telecommunications (land lines) (CSO/2007)	PAL-COM (Palestinian)	
Sewer disposal facilities (CSO/2007)	cesspits	yes
	public sewage network	no
	private sewage connection (sharing)	no
	open channels	no
Solid waste collection services (garbage collection) (CSO/2007)	UNRWA	yes
	dumped on road sides/ vacant lots	yes
Storm-water drainage	no (roads are easily flooded)	
Road surfaces (CSO/ 2007)	asphalt	70%
	unpaved	10%
	concrete	20%
No. of sanitation labourers (Needs Assessment Report/ WB Field, Jun. 2008)	3	

Internal spatial distribution

-  UNRWA service area include open gardens and open areas
-  private open spaces include private paved and garden areas
-  streets/ paths
-  built up area exclude UNRWA building



source : Camp Development Pilot Research Project, 2006

Notes

All shelters have private latrines connected to precolation pits.  
 All garbage is collected by UNRWA sanitation labourers into 21 containers and disposed twice a week by Jericho Municipality compactor at the municipality dump site.  
 UNRWA asphalted approximately 70% of the camp's roads, and concreted the remaining pathways with the assistance of Local Camp Committee.  
 Maintenance is mainly done by UNRWA.

#### 5. Socio-Economic Profile

(RSSP/WB Field, 2007)	Special Hardship Cases (SHC)	15 families
	emergency cases	236 families
	beneficiaries of MMD	0
Household poverty rate (HHE Study/ WB Field, 2nd half 2007)	38% (20.2% absolute poverty)	
Average monthly household income (HHE Study/ WB Field, 2nd half 2007)	NA	
Employment statistics (HHE Study/ WB Field, 2nd half 2007)	employment rate	60.5%
	female employment rate	NA
Unemployment statistics (HHE Study/ WB Field, 2nd half 2007)	unemployment rate	39.5% (ILO Definition)
	female unemployment rate	NA
Classification of active labour force (HHE Study/ WB Field, 2nd half 2007)	UNRWA employees	9%

	public sector	41%
	private sector	49%
	Inter/NGO organisations	1%
Number of commercial stores (CSO/ 2007)	50	
Location of commercial activity (CSO/ 2006)	The majority of shops and workshops stretch along the main street in the camp. A few small groceries, which were established within the camp quarters are scattered all over the camp. Only one central market along the camp's main road sells vegetables.	
Commercial sector rating (CSO & Research Office/WB Field, 2006)	1. Grocery & minimarket	47%
	2. Manufacturing of const.materials	22%
	3. Butchery	13%
	4. Carpentries & furniture selling	6%
Other economic activity (workshops, factories, etc.)	workshops	3 (1 aluminum and 2 tailors)
	factories	5 (see notes below)
	other	NA
Owners of enterprises (CSO/2007)	camp residents	100%
	residents of neighboring areas	0%
Customers of enterprises (CSO/2007)	camp residents	70%
	from outside the camp	30%
Notes	There are presently five factories in Ein Sultan camp: one for production of hollow blocks, 2 making tiles, and 2 cutting and shaping stones.	

## 6. Organisations/ Programmes/ Activities

UNRWA services within refugee camps (2007)	Camp Service Office (CSO)	1
	Co-Educational School	1 (693 elementary stage) (348 preparatory stage)
	Health centre	1 (947 active family files)
	Physiotherapy Unit	0
	Distribution Centre	0
	Employment Guidance Centre	0
Level of education (HHE Study/ WB Field, 2nd half 2007)		
% of individuals with health insurance (HHE Study/ WB Field, 2nd half 2007)	80.9%	
Other institutions: NGOs, CBOs (CSO/ 2007)	Women's Programme Centre	1
	Youth Activity Centre	1 (inactive)
	Children's Centre	0
	Kindergartens	3
	Community Based Rehab. Centre	0
	Other communal organisations	3 mosques 1 Rural Women Committee
Local Committees/ Popular Committees	Head of Local Committee	
	number of active members	
	location of LC building	
	date of establishment	
	main activities in the camp	
Notes	Al-Mustqbal kindergaten owned by the Local Committee and Al-Aydi As-Saghira and Al-Yasameen kindergartens are private ones.	