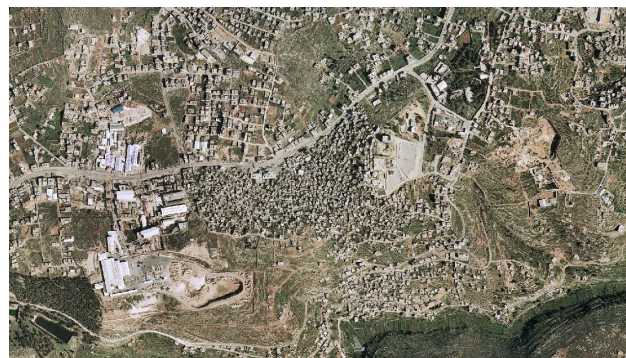


# Dheisheh Refugee Camp Profile



source: Good Shepherd Engineering and Computing Company, Bethlehem/ date: 2005



source: OFEK aerial photography LTD/ date: 2005

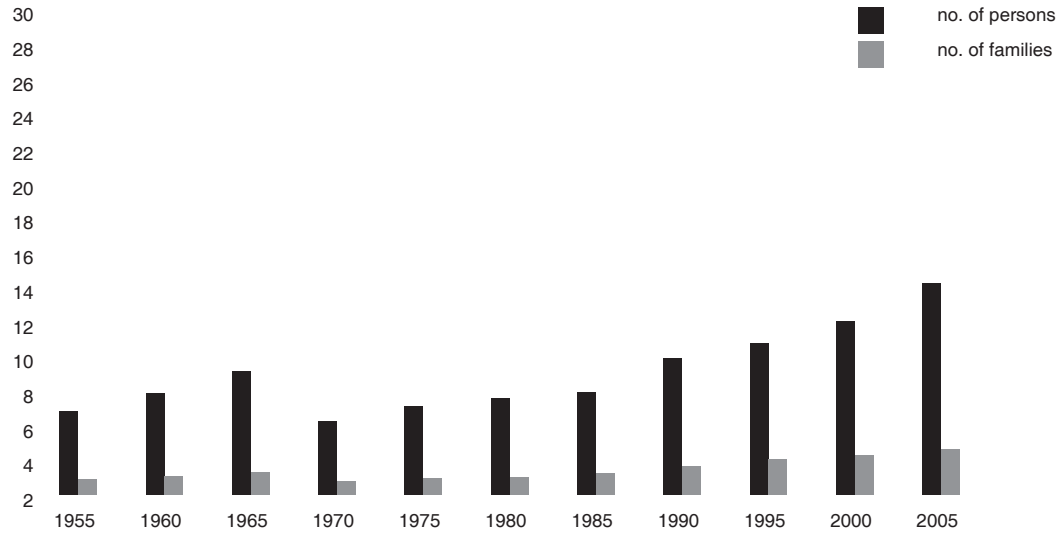
## 1. General Information

HQ or Field	West Bank
Camp name/ area	Dheisheh Camp / Hebron Area
Location	Between Bethlehem and Hebron
Status of camp (official, non-official, gathering)	Official camp
Year of establishment	1949
Legal status of land	private land ( 0%), government land ( 100%), see notes below
Historical background	Original inhabitants came from 45 villages in the western Jerusalem and western Hebron areas, mainly Zakariyeh, Ras Abu Amar and Al Walajah; Beit Jibrin and Beit I'tab.
Places of origin	There are some families descending from the same origin or village such as Al Walajah , Ajajreh neighbourhoods.
Area at establishment (UNRWA records)	309 dunums/ 0.309 km sq
Are at present (CD Pilot Research Project, 2006)	327.7 dunums/ 0.327 km sq
Notes	All West Bank camps were set up on plots of land leased by UNRWA from the Hashemite Kingdom of Jordan (ref. Agreement between the Government of the Hashemite Kingdom of Jordan and UNRWA, 14/03/1951). No lease agreement with private individuals. When camps were established, most of the land was already state land, while small private plots had been leased by the host government from local landowners

## 2. Demographic Profile

UNRWA registered camp population at establishment	8,236 persons (UNRWA record before March 1967)		
UNRWA registered camp population at present	12,954 persons (UNRWA Registration Statistical Bulletin/ Q4 2007)		
Estimated actual camp residents inside UNRWA's official camp boundaries	total:	11,000 (estimate by CSO, 2007)	
	local camp code:	10,500 (estimate by CSO, 2007)	
	other camp codes:	50 (estimate by CSO, 2007)	
Gender (HHE Study/ WB Field, 2nd half 2007)	non-refugees:	450 (estimate by CSO, 2007)	
	M	50.7%	
	F	49.3%	
Age groups (HHE Study/ WB Field, 2nd half 2007)	0-14	39.1%	
	15-24	20.3%	
	25-60	35.9%	
	over 60	4.7%	
Age average (HHE Study/ WB Field, 2nd half 2007)	23.5		
Marital status > 14 years of age (RSSP/ WB Field, Dec. 2007)	single	M 46.5%	F 42.4%
	married	M 53.2%	F 48.6%
	divorced	M 0.2%	F 1.4%
	widow	M 0.2%	F 7.6%
Average family size (HHE Study/ WB Field, 2nd half 2007)	5.0		
Average household size (HHE Study/ WB Field, 2nd half 2007)	5.3		

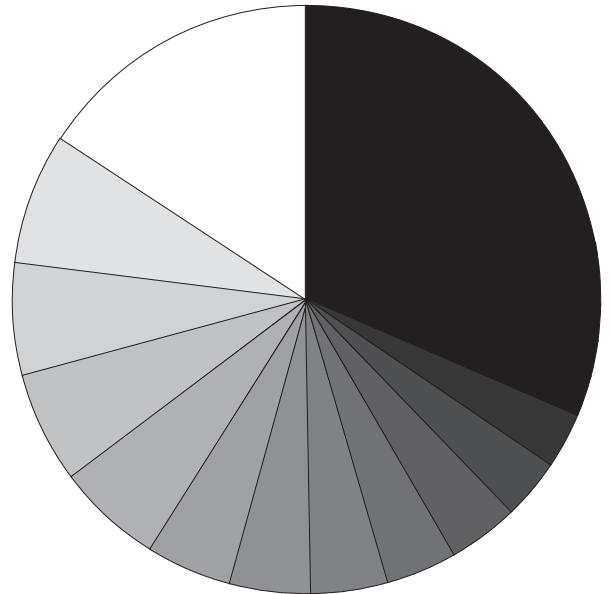
Demographic development



source: UNRWA Department of Relief and Social Services, WB Field, 2005

Places of origin with camp code

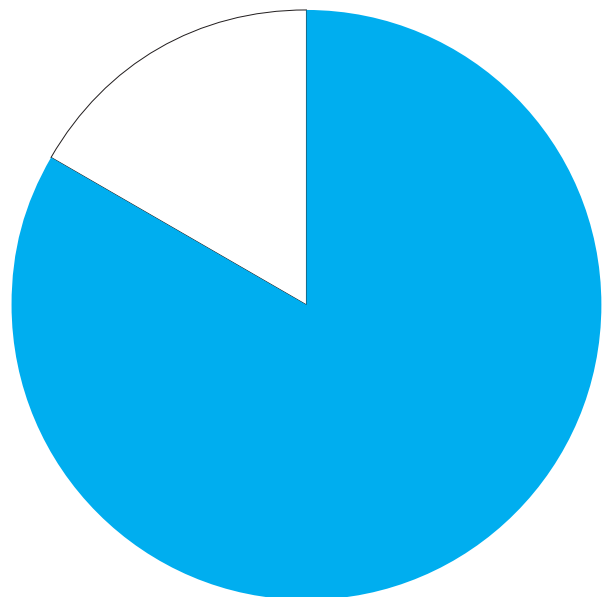
- other
- Deir Esh Shiekh
- sara
- Sufia
- Mughallis
- Khulda
- Khirbit Beit Far
- Rafat
- Qabu
- Ajjur
- Deir Aban
- Walaja
- Ras Abu Ammar



source: UNRWA Department of Relief and Social Services, WB Field, 2005

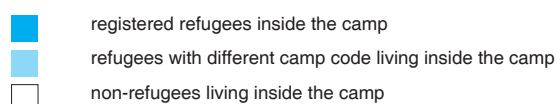
Out-migration of refugees with camp code

- registered refugee live inside camp
- registered refugee live outside camp



source : Estimate by Galib Al-Biss (CSO Amari), 2005

### Structure of camp population within UNRWA boundaries



source : CSO Amari, Galib Al-Biss, 2005





### 3. Spatial/ Physical Conditions

No of shelters at establishment (UNRWA records)	845 units built by UNRWA	
No of shelters at present (Eng. Dept./ WB Field, 2005)	1,550 units, including upper floor	
Building materials (HHE Study/ WB Field, 2nd half 2007)	stone	10.6%
	concrete	2%
	cement bricks	87.3%
	asbestos, wood, zinc	0%
	cloth, mud, staw	0%
	other	0.1%
Verticalisation/ number of floors (CSO/2007)	ground floor	10%
	1 floor	10%
	2 floor	60%
	more than 2 floors	20%
Estimation of density (CD Pilot Research Project, 2006)	est. actual population/ total area (Hac) 305.7 person/hac	
(CD Pilot Research Project, 2006)	percentage of built up area 42.8%	
(CD Pilot Research Project, 2006 based on floor area estimate by CSO)	Floor Space Index FSI (built up area x avarage no. of floors / total area) 0.95	
Names of main quarters & blocks	NA	
External communal/ public spaces (CSO/2007)	playgrounds	0
	parks	0
	football fields	0
	other open spaces used by residents	1 (public garden "Alfineeq")
	Vehicles and parking (CSO/2007)	There are about 90 vehicles in the camp.
Notes		

#### 4. Technical Infrastructure/ Services

Water supplier (UNRWA Sanitation Division /WB Field, 2007)	Bethlehem Water Authority (BWA)	
Owner of distribution network (UNRWA Sanitation Division/ WB Field, 2007)	Bethlehem Water Authority (BWA)	
Average water available per person (UNRWA Sanitation Div/ WB Field, 2007)	60 l/ day (capacity)	
Water quality (UNRWA Sanitation Division/ WB Field, Dec. 2007)	100% of water sample meeting WHO standards for bacteriology test	
Water supply to individual shelters (per cent)	100% (all shelters have indoor water connection)	
Electrical services (CSO/2007)	Jerusalem District Electrical Company (100% of shelters)	
Provider for telecommunications (land lines) (CSO/2007)	PAL-COM (Palestinian)	
Sewer disposal facilities	cesspits	yes (the eastern side)
	public sewage network	yes (owner: BWA)
	private sewage connection (sharing)	no
	open channels	no
Solid waste collection services (garbage collection)	UNRWA	yes
	dumped on road sides/ vacant lots	yes
Storm-water drainage	no (roads are easily flooded)	
Road surfaces (CSO/2007)	asphalt	38%
	unpaved	0%
	concrete	62 %
No. of sanitation labourers (Needs Assessment Report/ WB Field, Jun. 2008)	13	

Internal spatial distribution

-  UNRWA service area include open gardens and open areas
-  private open spaces include private paved and garden areas
-  streets/ paths
-  built up area exclude UNRWA building



source : Camp Development Pilot Research Project, 2006

#### Notes

Most of the compounds (85%) are connected to the public sewerage network. The remaining 15% have private latrines connected to percolation pits. All garbage is collected by UNRWA sanitation labourers and disposed outside the camp by UNRWA compactor truck. Areas nearby such as Ad -Doha residents use UNRWA containers for their garbage disposal leading to additional encumbrance.

UNRWA asphalted approximately 38% of the camp's roads, and concreted the remaining pathways with the assistance of local camp committee. Maintenance is mainly accomplished by UNRWA.

#### 5. Socio-Economic Profile

(RSSP/ WB, Dec. 2007)	Special Hardship Cases (SHC)	281 families
	emergency cases	1,249 families
	beneficiaries of MMD	80 (total value loans \$96,186)
Household poverty rate (HHE Study/ WB Field, 2nd half 2007)	31.5% (18.2% absolute poverty)	
Average monthly household income (HHE Study/ WB Field, 2nd half 2007)	NIS 949	
Employment statistics (HHE Study/ WB Field, 2nd half 2007)	employment rate	66.7%
	female employment rate	NA
Unemployment statistics (HHE Study/ WB Field, 2nd half 2007)	unemployment rate	33.3% (ILO Definition)
	female unemployment rate	NA

Classification of active labour force (HHE Study/ WB Field, 2nd half 2007)	UNRWA employees	11%
	public sector	29%
	private sector	55%
	Inter/NGO organisations	4%
Number of commercial stores (CSO/2007)	200	
Location of commercial activity	The majority of shops and workshops stretch along the main street in the camp. A few small groceries, which were established within the camp quarters are scattered all over the camp.	
Commercial sector rating (CSO & UNRWA Research Office/ WB, 2006)	1. Grocery & minimarket	37%
	2. Manufacturing/selling of construction materials	11%
	3. Clothes & shoes	8 %
	4. Butchery	6 %
Other economic activity (CSO/2007)	workshops	15 (8 carpentry, 5 aluminum, 2 smithery)
	factories	2 ( wooden handicrafts & sewing)
	other	0
Owners of enterprises (CSO/2007)	camp residents	30 %
	residents of neighboring areas	70 %
Customers of enterprises (CSO/2007)	camp residents	50 %
	from outside the camp	50 %
Notes	A relative increase in the total number of enterprises was noticed as a result of the high unemployment rate due to inaccessibility to the Israeli labour market. Unemployed people mainly started small business, e.g. groceries, hawkers in the camp.	

#### 6. Organisations/ Programmes/ Activities

UNRWA services within refugee camps (2007)	Camp Service Office (CSO)	1
	Boys schools	1 (elementary 795, prep. 476)
	Girl schools	1 (element. 425, prep.833)
	Health centre	1 (2,665 active family files)
	Physiotherapy Unit	1
	Distribution Centre	1
	Employment Guidance Centre	0
Level of education (HHE Study/ WB Field, 2nd half 2007)	39.2%	
% of individuals with health insurance (HHE Study/ WB Field, 2nd half 2007)	39.2%	
Other institutions: NGOs, CBOs (CSO/2007)	Women's Programme Centre	1
	Youth Activity Centre	1
	Children's Centre	1
	Kindergartens	6
	Community Based Rehab. Centre	1
	Other communal organisations	3 mosques
		3 libraries
		2 health centres run by the Local Committee.
Local Committees/ Popular Committees (Head of the LC/ 2006)	Head of Local Committee	
	number of active members	
	location of LC building	
	date of establishment	
	main activities in the camp	
Notes	Eight NGO's exist in the camp: Ibda Centre working on cultural exchange programmes, women's empowerment, childhood development activities, and computer training; National Charitable Association, providing food assistance and promoting community development; Shams Establishment, working on community development and presently building a health care unit; Khayma Cultural Centre organizing cultural and sports activities; Workers' Rights Centre implementing awareness raising activities on workers' right; Shira' Centre, Karameh and Al-Fineeq Cultural Centre, Al-Huda Centre, Al-Nour Centre, Ae'd Centre. In addition, Palestinian Women Committee and Zakat Committee provide support to needy camp residents.	