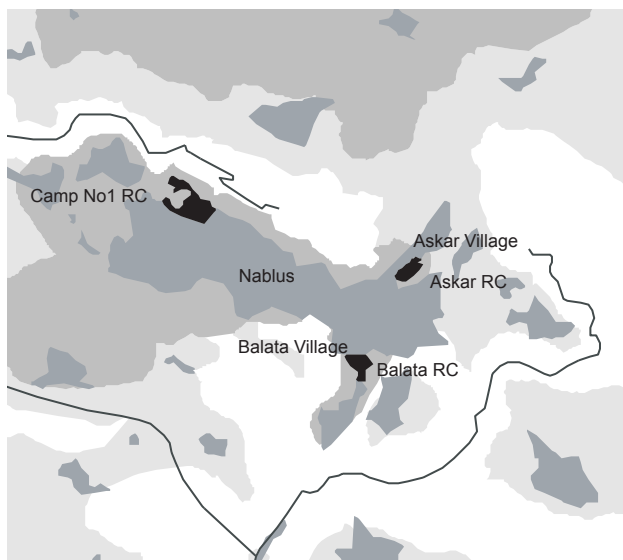
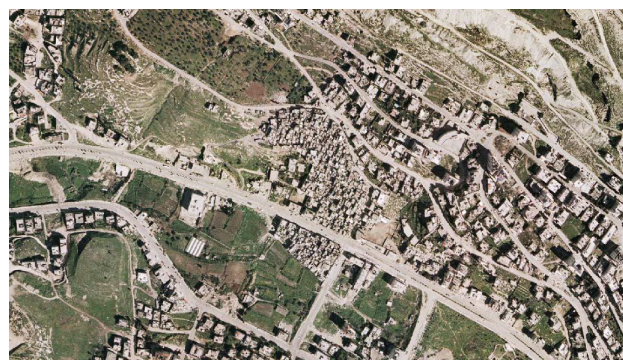


# Camp No. 1 Refugee Camp Profile



source: Good Shepherd Engineering and Computing Company, Bethlehem/ date: 2005



source: OFEK aerial photography LTD/ date: 2005

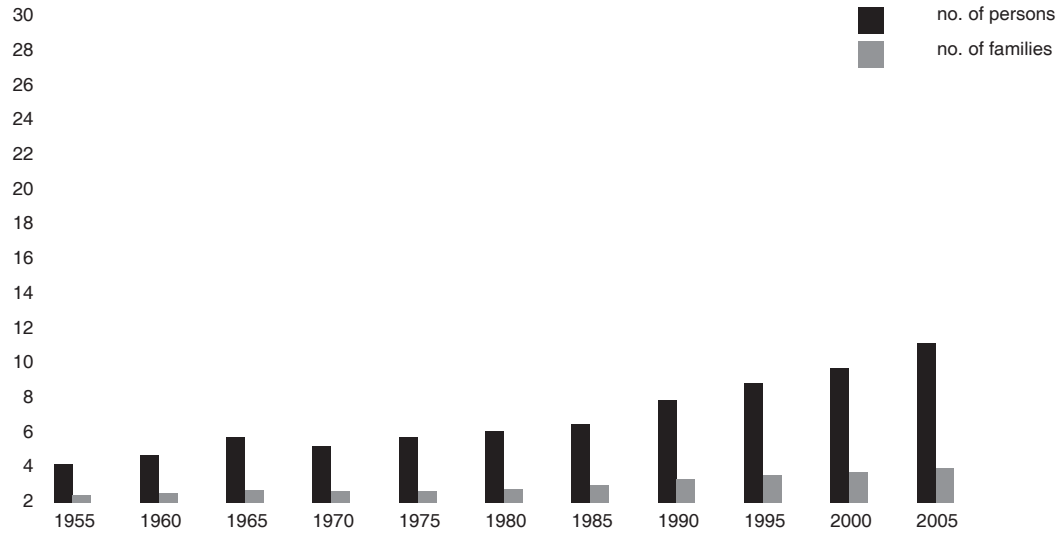
## 1. General Information

HQ or Field	West Bank
Camp name/ area	Camp No1/Nablus Area
Location	At the western side of Nablus, on the main road between Nablus and tTulkarem
Status of camp	official camp
Year of establishment	1950
Legal status of land	private land (100%), government land (0%), see notes below
Historical background	Camp No. 1 was the first camp to be established in Nablus area, just a few months before Balata and Askar camps. It is also known as Ein Beit El Ma', 'spring of the house of water', from a local spring which served the needs of the refugees in the early days of camp establishment.
Places of origin	The inhabitants of the camp came from the cities of Lydd, Jaffa and Haifa, mainly Wad Al Hawareth, Umm Khaled and Qaqoun; Shaab, El Birweh, Nahf and Al Damoun; Yazour, Beit Dajan, Shkyieh, Al Abbasiyeh, Kufr Ana, Al Khgayriye and Salameh. Some residents also are of Bedouin origin.
Area at establishment (UNRWA records)	45 dunums/ 0.045 km sq
Are at present (UNRWA CD Pilot Research Project, 2006)	45 dunums/ 0.045 km sq
Notes	All West Bank camps were set up on plots of land leased by UNRWA from the Hashemite Kingdom of Jordan (ref. Agreement between the Government of the Hashemite Kingdom of Jordan and UNRWA, 14/03/1951). No lease agreement with private individuals. When camps were established, most of the land was already state land, while small private plots had been leased by the host government from local landowners

## 2. Demographic Profile

UNRWA registered camp population at establishment	3,125 persons (UNRWA record before March 1967)	
UNRWA registered camp population at present	6,750 persons (UNRWA Registration Statistical Bulletin/ Q4 2007)	
Estimated actual camp residents inside UNRWA's official camp boundaries	total:	5,500 (estimate by CSO, 2007)
	local camp code:	5,377 (estimate by CSO, 2007)
	other camp codes:	60 (estimate by CSO, 2007)
	non-refugees:	63 (estimate by CSO, 2007)
Gender (HHE Study/ WB Field, 2nd half 2007)	M	50.7%
	F	49.3%
Age groups (HHE Study/ WB Field, 2nd half 2007)	0-14	40%
	15-24	20.3%
	25-60	35.3%
	over 60	4.4%
Age average (HHE Study/ WB Field, 2nd half 2007)	23.3	
Marital status > 14 years of age (RSSP/ WB Field, Dec. 2007)	single	M 48.3% F 42.9%

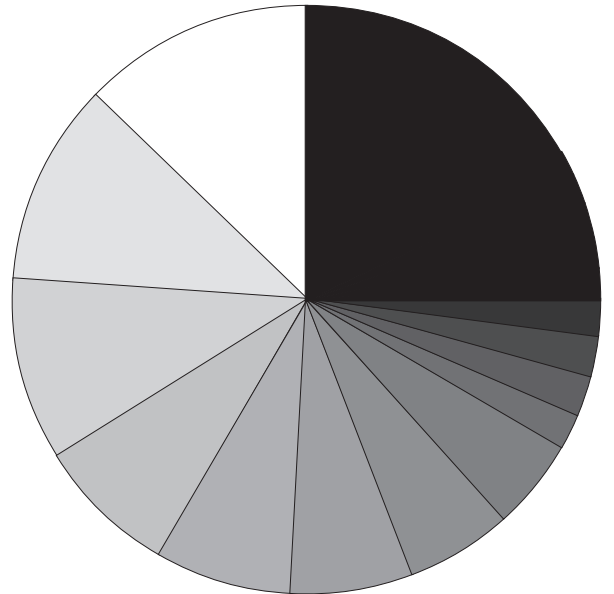
Demographic development



source: UNRWA Department of Relief and Social Services, WB Field, 2005

Places of origin with camp code

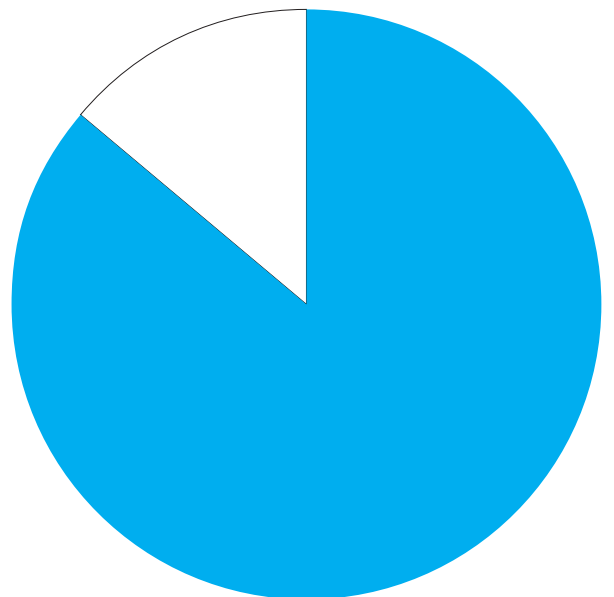
- other
- Sheik Muwwanis
- Bureika
- Rantiya
- Abu Shusha
- Majdal Es Sadiq
- Kheiriya
- Sahab
- Salama
- Birwa
- Jammazin El Ghareb
- Jaffa
- Yazur



source: UNRWA Department of Relief and Social Services, WB Field, 2005

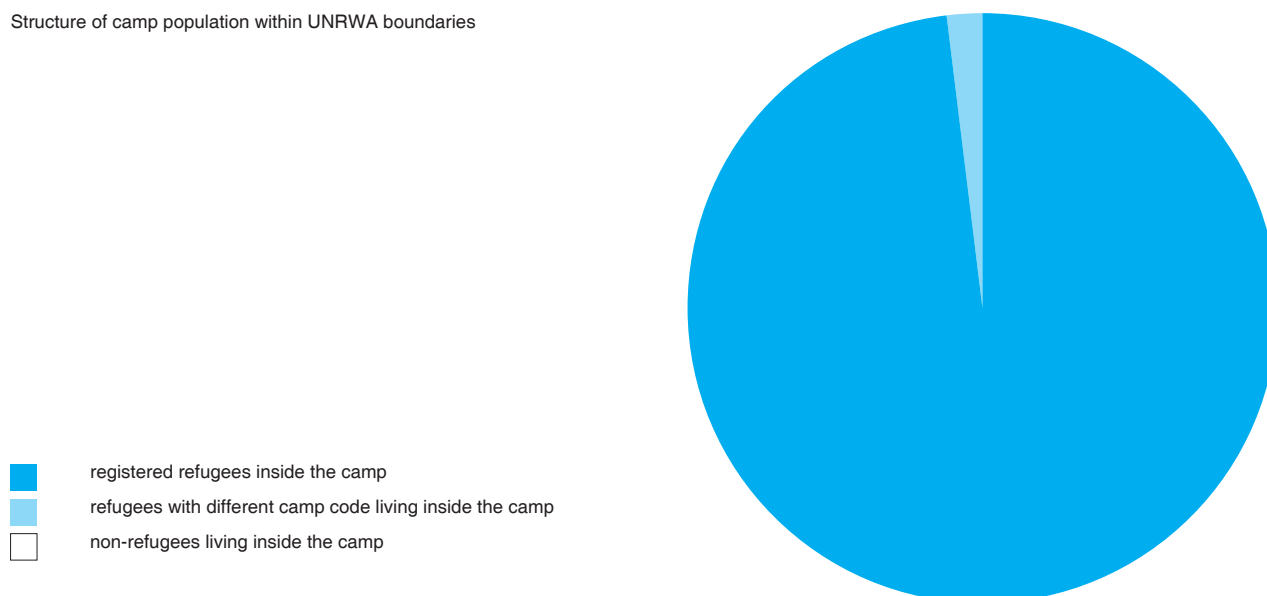
Out-migration of refugees with camp code

- registered refugee live inside camp
- registered refugee live outside camp



source : Estimate by Galib Al-Biss (CSO Amari), 2005

## Structure of camp population within UNRWA boundaries



source : CSO Camp No 1, 2005

	married	M 51.3%	F 47.4%
	divorced	M 0.2%	F 1.6%
	widow	M 0.3%	F 8.1%
Average family size (HHE Study/ WB Field, 2nd half 2007)	5.0		
Average household size (HHE Study/ WB Field, 2nd half 2007)	6.1		

### 3. Spatial/ Physical Conditions

No of shelters at establishment (UNRWA records)	403 units built by UNRWA	
No of shelters at present (CSO/2007)	555 units (including the upper floors)	
Building materials (HHE Study/ WB Field, 2nd half 2007)	stone	0.2%
	concrete	1.8%
	cement bricks	98.1%
	asbestos, wood, zinc	0%
	cloth, mud, staw	0%
	other	0%
Verticalisation/ number of floors (CSO/2007)	ground floor	5%
	1 floor	15%
	2 floor	60%
	more than 2 floors	20%
Estimation of density (UNRWA CD Pilot Research Project, 2006)	est. actual population/ total area (Hac)	1279 persons/ hac
(CD Pilot Research Project, 2006)	percentage of built up area	72.5 %
(CD Pilot Research Project, 2006 based on floor area estimate by CSO)	Floor Space Index FSI (built up area x avarage no. of floors / total area)	1.67
External communal/ public spaces (CSO/2007)	playgrounds	0
	parks	0
	football fields	0
	municipality public garden	1
	other open spaces used by residents	0
Vehicles and parking (CSO/2007)	There are more than 140 private and public vehicles in the camp. They are parked in front or beside shelters, which makes alleyways even narrower.	
Notes	Distance between shelters is 0.2m and in most cases negligible. ventilation is absent. The main road in the camp is 200 m long and 6-8 m wide and connects the camp to Tulkarem -Nablus road. . There is no road side for pedestrians. Internal alleyways are on average 0. 2 m wide.	

#### 4. Technical Infrastructure/ Services

Water supplier (UNRWA Sanitation Division /WB Field,2007)	Nablus Municipality	
Owner of distribution network (UNRWA Sanitation Division/ WB Field,2007)	Nablus Municipality network	
Average water available per person (UNRWA Sanitation Div./WB, 2007)	80 l/ day (capacity)	
Water quality (UNRWA Sanitation Division/ WB Field, 2007)	100% of water sample meeting WHO standards for bacteriology test	
Water supply to individual shelters	100% (all shelters have indoor water connection)	
Electrical services (CSO/2007)	Nablus Municipality (100% of shelters)	
Provider for telecommunications (land lines) (CSO/2007)	PAL-COM (Palestinian)	
Sewer disposal facilities	cesspits	no
	public sewage network	yes (owner: Nablus Municipality)
	private sewage connection (sharing)	no
	open channels	no
Solid waste collection services (garbage collection)	UNRWA	yes
	dumped on road sides/ vacant lots	yes
Storm-water drainage	yes (only in small part of the camp 2 nearby the CSO's office and one by the main road -only 30m. long). Canals drain the water to nearby canyons)	
Road / Allway surfaces (CSO/2007)	asphalt	10% (main road to Tulkarem)
	unpaved	0%
	concrete	90%

Internal spatial distribution

- UNRWA service area include open gardens and open areas
- private open spaces include private paved and garden areas
- streets/ paths
- built up area exclude UNRWA building



source : Camp Development Pilot Research Project, 2006

No. of sanitation labourers (Needs Assessment Report/ WB Field, Jun. 2008) 6

Notes	All garbage is collected by UNRWA sanitation labourers and disposed in nearby containers. The Municipality compactor evacuates all containers daily and transport the garbage to municipal dumping area.
	UNRWA asphalted approximately 10% of camp roads and concreted the remaining pathways with the assistance of local camp committee.
	Maintenance is mainly accomplished by UNRWA. A new water line was constructed nearby the camp through a German project, from Dier Sharaf village to Nablus city. Serving only the Municipality

#### 5. Socio-Economic Profile

(RSSP/WB Field, Dec. 2007)	Special Hardship Cases (SHC)	217 families
	emergency cases	864 families
	beneficiaries of MMD (2007)	7 (total value loans \$8,757)
Household poverty rate (HHE Study/ WB Field, 2nd half 2007)	33.1% (18.7% absolute poverty)	
Average monthly household income (HHE Study/ WB Field, 2nd half 2007)	NIS 1,280	
Employment Statistics (HHE Study/ WB Field, 2nd half 2007)	employment	74.5%
	female employment	NA
Unemployment Statistics (HHE Study/ WB Field, 2nd half 2007)	unemployment	25.5% (ILO Definition)
	female unemployment	NA