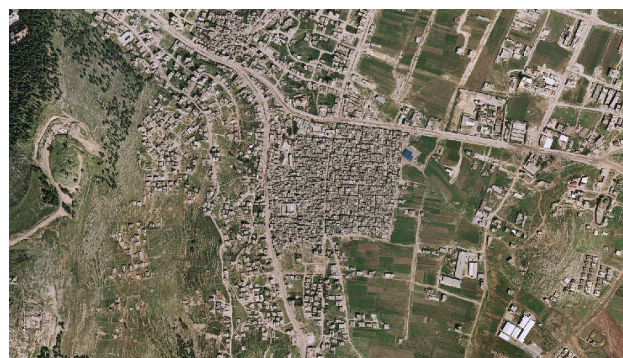


source: Good Shepherd Engineering and Computing Company, Bethlehem/ date: 2005



source: OFEK aerial photography LTD/ date: 2005

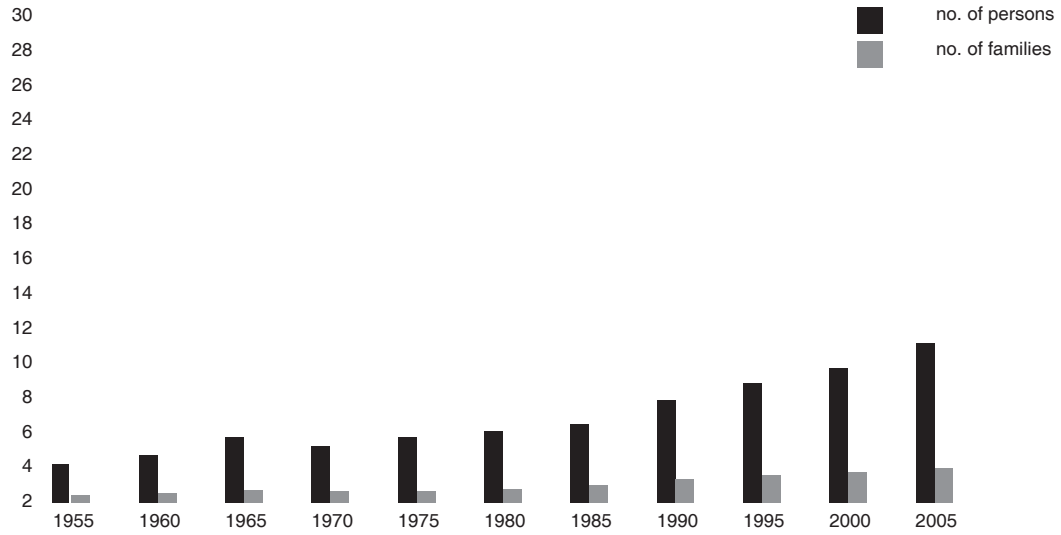
1. General Information

HQ or Field	West Bank
Camp name/ area	Balata Camp / Nablus Area
Location	Eastern side on the main road at the entrance to Nablus city
Status of camp	official camp
Year of establishment	1950
Legal status of land	private land (100%), government land (0%), see notes below
Historical background/	The camp was established in 1950. The inhabitants of the camp came from 60 villages and cities of Lydd, Jaffa and Ramleh. A large number of residents are of Bedouin origin.
Places of origin	NA
Area at establishment (UNRWA records)	252 dunums/ 0.252 km sq
Area at present (UNRWA CD Pilot Research Project, 2006)	253 dunums/ 0.253 km sq
Notes	All West Bank camps were set up on plots of land leased by UNRWA from the Hashemite Kingdom of Jordan (ref. Agreement between the Government of the Hashemite Kingdom of Jordan and UNRWA, 14/03/1951). No lease agreement with private individuals. When camps were established, most of the land was already state land, while small private plots had been leased by the host government from local landowners.

2. Demographic Profile

UNRWA registered camp population at establishment	10,776 persons (UNRWA record before March 1967)		
UNRWA registered camp population at present	23,181 persons (UNRWA Registration Statistical Bulletin/ Q4, 2007)		
Estimated actual camp residents inside UNRWA's official camp boundaries	total:	23,600 (estimate by CSO, 2007)	
	local camp code:	23,340 (estimate by CSO, 2007)	
	other camp codes:	110 (estimate by CSO, 2007)	
	non-refugees:	150 (estimate by CSO, 2007)	
Gender (HHE Study/ WB Field, 2nd half 2007)	M	49.1%	
	F	50.9%	
Age groups (HHE Study/ WB Field, 2nd half 2007)	0-14	40.1%	
	15-24	21.2%	
	25-60	34.4%	
	over 60	4.4%	
Age average (HHE Study/ WB Field, 2nd half 2007)	23		
Marital status > 14 years of age (RSSP/ WB Field, Dec. 2007)	single	M 43.3%	F 41.7%
	married	M 56.2%	F 48.0%
	divorced	M 0.2%	F 1.9%
	widow	M 0.3%	F 8.3%
Average family size (HHE Study/ WB Field, 2nd half 2007)	4.8		
Average household size (HHE Study/ WB Field, 2nd half 2007)	5.9		

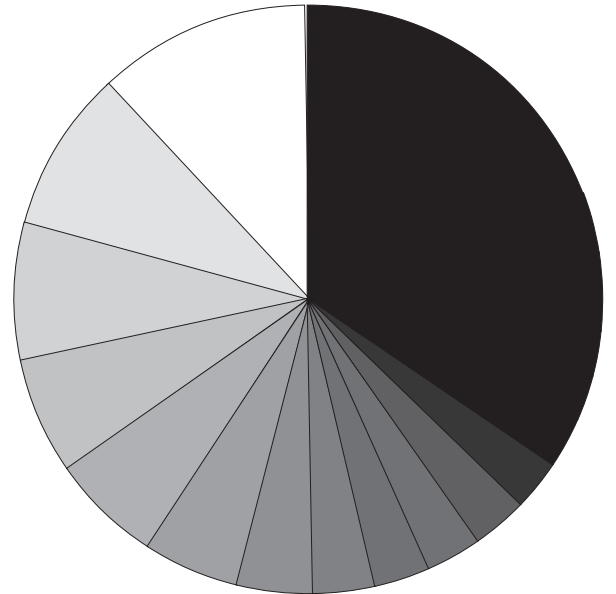
Demographic development



source: UNRWA Department of Relief and Social Services, WB Field, 2005

Places of origin with camp code

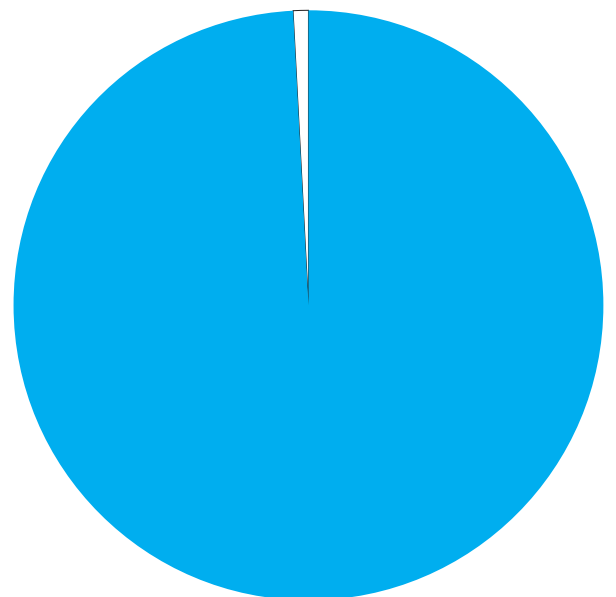
- other
- Kheiria
- Fajja
- Sheik Muwwinas
- Kafr Saba
- Jammasin EshSharqi
- Tira
- Lydda
- Abu Kishk
- Salama
- Jammasin El Gharbi
- Jaffa
- Sawalima



source: UNRWA Department of Relief and Social Services, WB Field, 2005

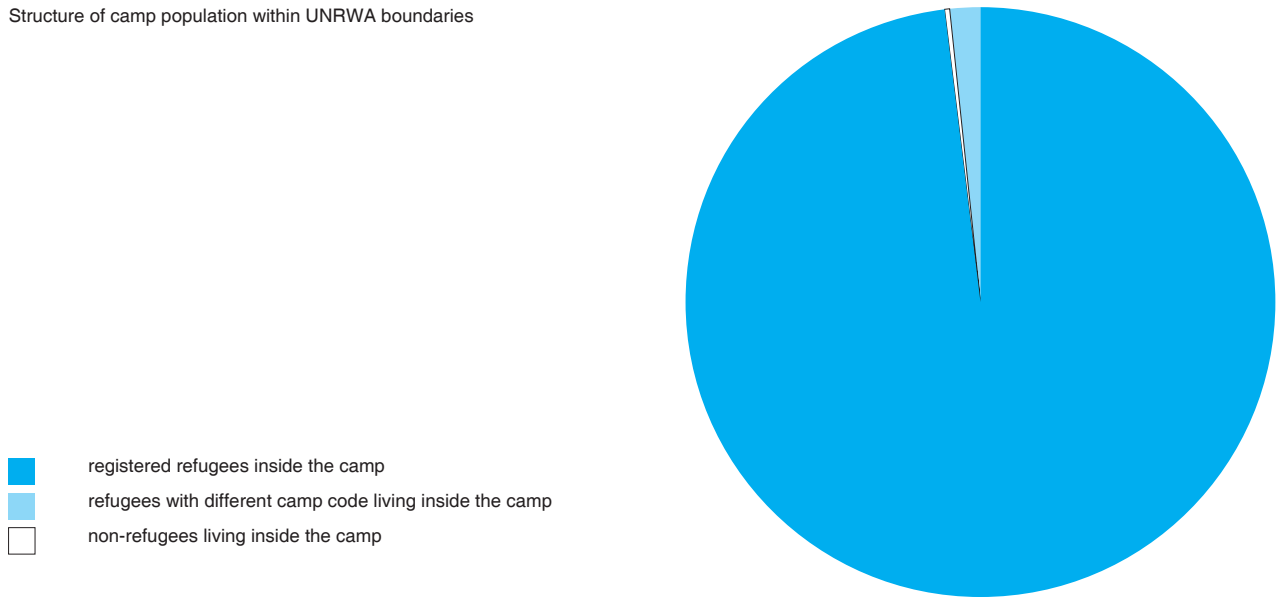
Out-migration of refugees with camp code

- registered refugee live inside camp
- registered refugee live outside camp



source : Estimate by Galib Al-Biss (CSO Amari), 2005

Structure of camp population within UNRWA boundaries



source : CSO Amari, Galib Al-Biss, 2005

3. Spatial/ Physical Conditions

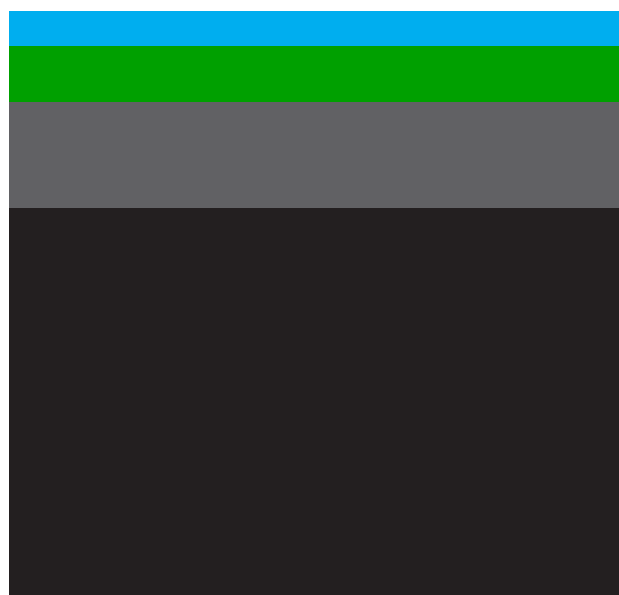
No of shelters at establishment (UNRWA records)	2,046 units built by UNRWA	
No of shelters at present (CSO/2007)	1,728 units including upper floors	
Building materials (HHE Study/ WB Field, 2nd half 2007)	stone	0.1%
	concrete	4.9%
	cement brick	94.8%
	asbestos, wood, zinc	0.1%
	other	0%
Verticalisation/ number of floors (CSO/ 2007)	ground floor	10%
	1 floor	70%
	2 floor	15%
	more than 2 floors	5%
Estimation of density (UNRWA CD Pilot Research Project/ 2006)	est. actual population/ total area (Hac)	879.3 persons/hac
	(UNRWA CD Pilot Research Project/2006)	percentage of built up area 68.9%
(CD Pilot Research Project, 2006 based on floor area estimate by CSO)	Floor Space Index FSI (built up area x average no. of floors / total area)	1.08
External communal/ public spaces (CSO/2007)	playground	1 (basketball playground)
	parks	0
	football fields	0
	public garden for kids	1
	other open spaces used by residents	0
Vehicles and parking (CSO/2007)	There are more than 200 private and public vehicles in the camp. They are parked in front or beside shelters, which makes alleyways even narrower.	
Notes	Distance between houses varies, ranging from 0 to 1.5 meters. There are considerable disparities among the different neighborhoods. In the northern part of the camp distance is inadequate and ventilation extremely bad, while in the south western part conditions tend to be good.	

4. Technical Infrastructure/ Services

Water supplier (UNRWA Sanitation Division/ WB Field,2007)	Nablus Municipality	
Owner of distribution network (UNRWA Sanitation Division/ WB Field,2007)	Nablus Municipality	
Average water available per person (UNRWA Sanitation Div./WB Field,2007)	75 l/ day (capacity)	
Water quality (UNRWA Sanitation Division/ WB Field, Dec. 2007)	100% of water sample meeting WHO standards for bacteriology test	
Water supply to individual shelters	100% (all shelters have indoor water connection)	
Electrical services (CSO/2007)	Nablus Municipality network (100% of shelters)	
Provider for telecommunications (land lines) (CSO/2007)	PAL-COM (Palestinian)	
Sewer disposal facilities (CSO/2007)	cesspits	no
	public sewage network	yes (owner: Nablus Municipality)
	private sewage connection (sharing)	no
	open channels	no
Solid waste collection services (garbage collection)	UNRWA	yes
	dumped on road sides/ vacant lots	yes
Storm-water drainage	yes (only 5% of the camp)	
	There is a 512 m channel and a 530 m closed storm water pipes (10").	
	In some neighborhoods of the camp water is drained by canals, while the rest drains through the sewerage network. It ultimately ends in nearby canyons.	

Internal spatial distribution

- UNRWA service area include open gardens and open areas
- private open spaces include private paved and garden areas
- streets/ paths
- built up area exclude UNRWA building



source : Camp Development Pilot Research Project, 2006

Road surfaces (CSO/2005)	asphalt	40%
	unpaved	0%
	concrete	60%
No. of sanitation labourers (Needs Assessment Report/ WB Field, Jun. 2008)	19	

Notes	During summer time the overall water supply tends to decrease, as the distribution systems only works 4 days per week. A second source of water is represented by the UNRWA reservoir, which supplies water to some of its facilities within the camp.
	All garbage is collected by UNRWA sanitation labourers and disposed at Nablus Municipality dump, 2 km far from the camp, by the municipality skip lifter. Internal alleys have an average width ranging from 1.2 to 1 meter and a 40,000 meters length; all were paved with concrete. Two main roads cross the camp: they are both 12 meters wide and 700 meters long. One is located in the west part of the camp and leads to Nablus city; the second road, north located, connects the camp to Nablus, Balata village and Askar. There are roadsides along the roads extending for 1.5 meter, where houses are located. A Municipality intervention considerably improved the status of the roads. Internal alleys have an average width ranging from 1.2 to 1 meter and a 40,000 meters length; all were paved with concrete.

5. Socio-Economic Profile

(RSSP/WB Field, Dec. 2007)	Special Hardship Cases (SHC)	648 families
	emergency cases	3,064 families
	beneficiaries of MMD (2007)	160 (total value of loans \$150,847)
Household poverty rate (HHE Study/ WB Field, 2nd half 2007)		47.9% (30.8% absolute poverty)
Average monthly household income (HHE Study/ WB Field, 2nd half 2007)		NIS 1,342
Employment statistics (HHE Study/ WB Field, 2nd half 2007)	employment rate	75.2%
	female employment rate	NA
Unemployment statistics (HHE Study/ WB Field, 2nd half 2007)	unemployment rate	24.8% (ILO Definition)
	female unemployment rate	NA
Classification of active labour force (HHE Study/ WB Field, 2nd half 2007)	UNRWA employees	9%
	private sector	55%
	public sector	30%
	Inter/NGO organisations	6%
Number of commercial stores (CSO/ 2007)	400	
Location of commercial activity (CSO/ 2007)	The majority of shops and workshops stretch along the main street in the camp. Only one central market exists in the middle of the camp.	
Commercial sector rating (CSO & UNRWA Research Office/WB,2006)	Groceries & mini-markets	37%
	Fruits & Vegetables shops	8%
	Butchery	6%
	Manufacturing of const. materials	9%
	Restaurant, bar, coffee sho;	6%
Other economic activity (CSO/2007)	workshops	9 (5 tailors, 4 aluminum)
	factories	0
	other	0
Owners of enterprises (CSO/2007)	camp residents	90%
	residents of neighbouring area	10%
Customers of enterprises (CSO/2007)	camp residents	100%
	from outside the camp	0%
Notes	A relative increase in the total number of enterprises was noticed as a result of the high unemployment rate due to inaccessibility to the Israeli labour market. Unemployed people mainly started small business, e.g. having a stall on the main road.	

6. Organisations/ Programmes/ Activities

UNRWA services in refugee camps (2007)	Camp Service Office (CSO)	1
	Boys schools	2 (elementary 824, prep. 944)
	Girl schools	2 (element.391, prep.619)
	Health centre	1 (5,632 active family files)
	Physiotherapy Unit	1
	Distribution Centre	1
	Employment Guidance Centre	0
Level of education (HHE Study/ WB Field, 2nd half 2007)		
% of individuals with health insurance (HHE Study/ WB Field, 2nd half 2007)	91.3%	
Other institutions: NGOs, CBOs (CSO/2007)	Women's Programme Centre	1
	Youth Activity Centre	1
	Children Centres	2 (Happy Childhood Centre, Ajyal)
	Kindergartens	4
	Health clinics	8
	(1 Yazor Charity, 6 private, 1 dental)	
	Community Based Rehab. Centre	1
	Other communal organisations	3 mosques with community centre
		1 library
Local Committees/ Popular Committees	Head of Local Committee	
	number of active members	
	location of LC building	
	date of establishment	
	main activities in the camp	
Notes		