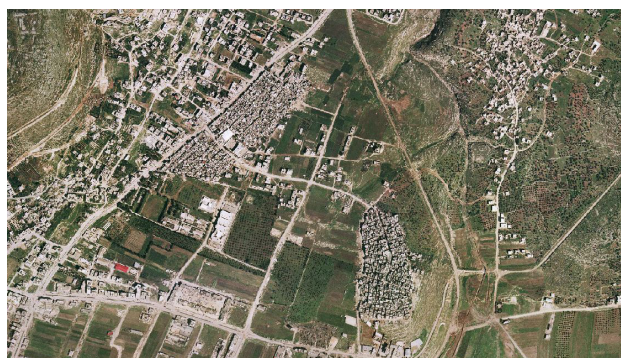


source: Good Shepherd Engineering and Computing Company, Bethlehem/ date: 2005



source: OFEK aerial photography LTD/ date: 2005

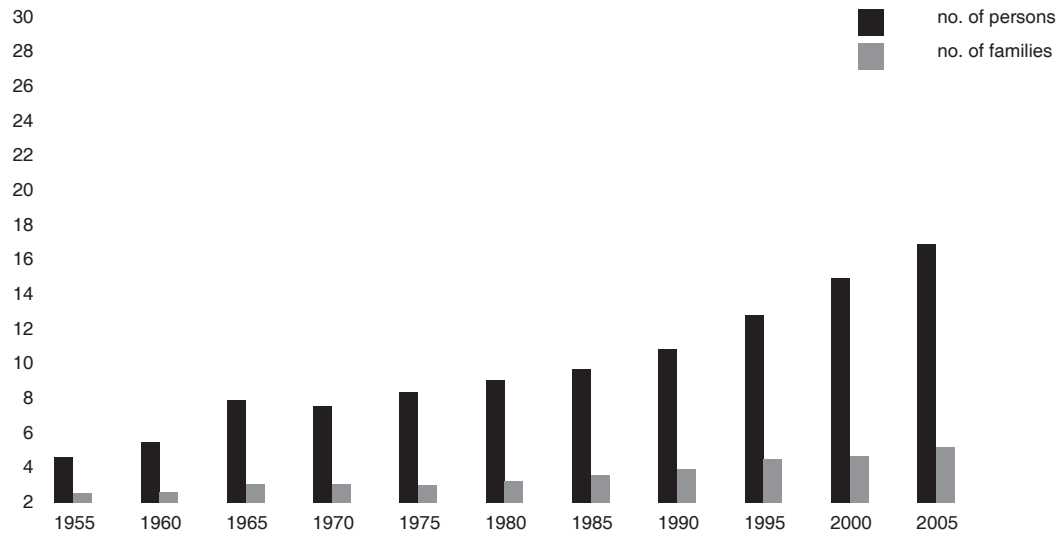
## 1. General Information

HQ or Field	West Bank
Camp name/ area	Askar Camp / Nablus Area
Location	Six km east of Nablus
Status of camp (official, non-official, gathering)	official camp
Year of establishment	1948
Year of establishment for ext. New Askar	1965
Legal status of land	private land (100%), government land (0%), see notes below
Historical background	Original inhabitants of old Askar came from from 36 villages in the Lydd, Haifa and Jaffa areas, mainly Al Msoudiyeh, Beit Dajan, Yazour, East and West Jammisin, Ashdod, Sheikh Mounis and Arab Abu Kishik. In 1965, severe, overcrowding problems led to expansion of the camp into the 'new' Askar, which however is not recognized by UNRWA. No UNRWA facilities are located in the area of expansion.
Places of origin	Some families descend from the same origin or village, such as Abu Kishik, Al – Jasaseen.
Area at establishment (UNRWA records)	119 dunums/ 0.119 km sq
Area at establishment for ext. New Askar (UNRWA records)	90 dunums/ 0.090 km sq
Area at present (CD Pilot Research Project, 2006)	119 dunums/ 0.119 km sq
Area at present for ext. New Askar (CD Pilot Research Project, 2006)	90 dunums/ 0.090 km sq
Notes	All West Bank camps were set up on plots of land leased by UNRWA from the Hashemite Kingdom of Jordan (ref. Agreement between the Government of the Hashemite Kingdom of Jordan and UNRWA, 14/03/1951). No lease agreement with private individuals. When camps were established, most of the land was already state land, while small private plots had been leased by the host government from local landowners

## 2. Demographic Profile

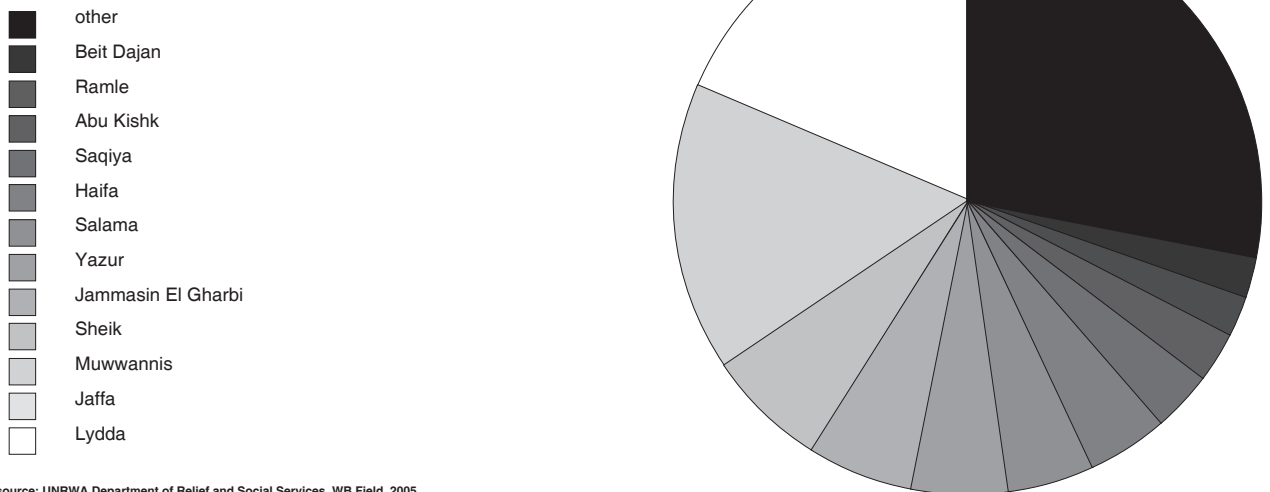
UNRWA registered camp population at establishment	6,209 persons (UNRWA record before March 1967)	
UNRWA registered camp population at present	15,887 persons (UNRWA Registration Statistical Bulletin/ Q4,2007)	
Estimated actual camp residents inside UNRWA's official camp boundaries	total:	15,000 (estimate by CSO, 2007)
	local camp code:	13,950 (estimate by CSO, 2007)
	other camp codes:	900 (estimate by CSO, 2007)
	non-refugees:	150 (estimate by CSO, 2007)
Gender (HHE Study/ WB Field, 2nd half 2007)	M	49.5%
	F	50.5%
Age groups (HHE Study/ WB Field, 2nd half 2007)	0-14	39.9%
	15-24	21%
	25-60	34.9%
	over 60	4.2%
Age average (HHE Study/ WB Field, 2nd half 2007)	23	

Demographic development



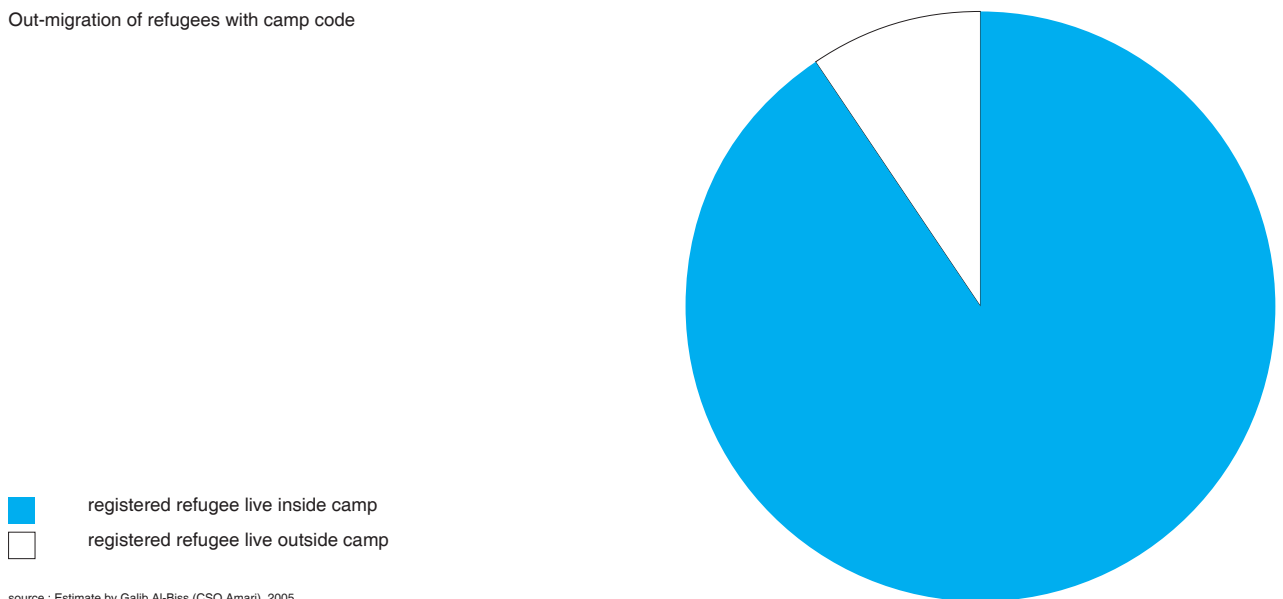
source: UNRWA Department of Relief and Social Services, WB Field, 2005

Places of origin with camp code



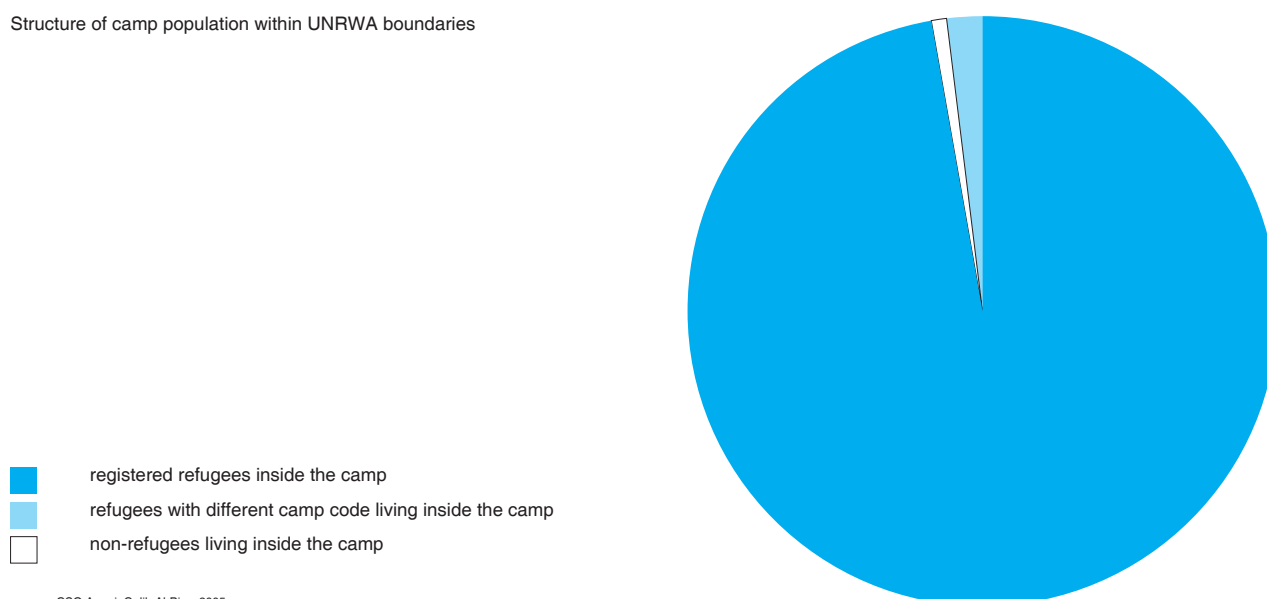
source: UNRWA Department of Relief and Social Services, WB Field, 2005

Out-migration of refugees with camp code



source : Estimate by Galib Al-Biss (CSO Amari), 2005

## Structure of camp population within UNRWA boundaries



source : CSO Amari, Galib Al-Biss, 2005

Marital status > 14 years if age (RSSP/ WB Field, Dec. 2007)	single	M 43.2%	F 40.1%
	married	M 56.3%	F 49.5%
	divorced	M 0.2%	F 1.9%
	widow	M 0.3%	F 8.5%
Average family size (HHE Study/ WB Field, 2nd half 2007)	4.8		
Average household size (HHE Study/ WB Field, 2nd half 2007)	5.8		





### 3. Spatial/ Physical Conditions

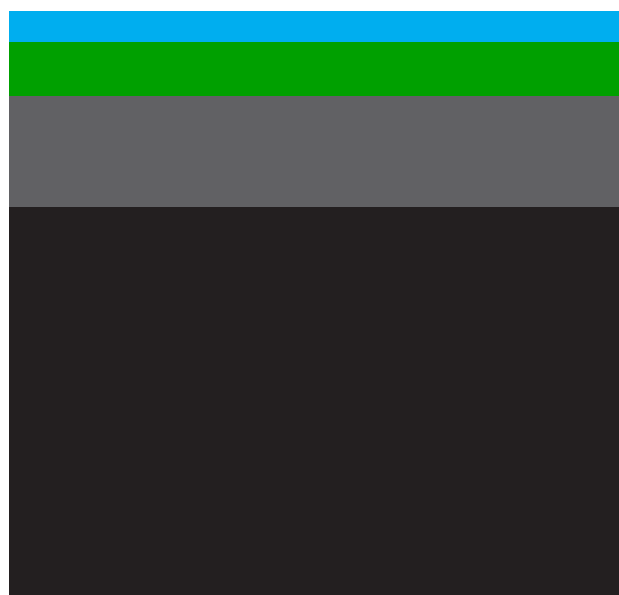
No of shelters at establishment (UNRWA records)	850 units built by UNRWA	
No of shelters at present (CSO/2007)	1,250 units, including upper floors	
Building materials (HHE Study/ WB Field, 2nd half 2007)	stone	0.6%
	concrete	14.5%
	cement bricks	84.5%
	asbestos, wood, zinc	0.2%
	cloth, mud, staw	0.1%
	other	0%
Verticalisation/ number of floors (CSO/2007)	ground floor	3%
	1 floor	80%
	2 floor	10%
	more than 2 floors	7%
Estimation of density (CD Pilot Research Project, 2006)	est. actual population/ total area (Hac) 720.1 person/hac	
(CD Pilot Research Project, 2006)	percentage of built up area 69%	
(CD Pilot Research Project, 2006 based on floor area estimate by CSO)	Floor Space Index FSI (built up area x avarage no. of floors / total area) 1.17	
Names of main quarters & blocks	NA	
External communal/ public spaces	playground	1 (Youth Activitiy Centre)
	parks	0
	football fields	0
	other open spaces used by residents	1 (children garden)
Vehicles and parking (CSO/2007)	There are more than 300 private and public vehicles in the camp. Houses lie next to the main road and they are so close that ventilation is almost absent. People regularly park their vehicles in the street.	
Notes:	One public park nearby the camp is presently under construction funded by PICDAR & other NGO's to serve all residents including the camp. It is supervised by the Local Camp Committee. The main road, 150 metres long and 10 metres wide connects the camp to the Nablus city and nearby villages. Internal alleys are 2.5 meters wide and 3,000 meters long. There are 60 meters roadside along the main road.	

#### 4. Technical Infrastructure/ Services

Water supplier (UNRWA Sanitation Division /WB Field/2007)	Nablus Municipality	
Owner of distribution network (UNRWA Sanitation Division/ WB Field/2007)	Nablus Municipality	
Average water available per person (UNRWA Sanitation Divi/WB Field, 2007)	65 l/ day (capacity)	
Water quality (UNRWA Sanitation Division/WB Field, Dec. 2007)	100% of water sample meeting WHO standards for bacteriology test	
Water supply to individual shelters (per cent)	100% (all shelters have indoor water connection)	
Electrical services (CSO/2007)	Nablus Municipality (100% of shelters)	
Provider for telecommunications (land lines) (CSO/2007)	PAL-COM (Palestinian)	
Sewer disposal facilities (CSO/2007)	cesspits	no
	public sewage network	yes (owner:UNRWA)
	private sewage connection (sharing)	no
	open channels	no
Solid waste collection services (garbage collection)	UNRWA	yes
	dumped on road sides/ vacant lots	no
Storm-water drainage	yes	(2% of the camp only)
Road surfaces (CSO/2007)	asphalt	44%
	unpaved	0%
	concrete	56%
No. of sanitation labourers (Needs Assessment Report/ WB Field, Jun. 2008)	15	

Internal spatial distribution

-  UNRWA service area include open gardens and open areas
-  private open spaces include private paved and garden areas
-  streets/ paths
-  built up area exclude UNRWA building



source : Camp Development Pilot Research Project, 2006

#### Notes

Shelters are connected to Nablus Municipality sewerage network which inflows in Al Bithan Valley. Parts of sewerage network are in need of rehabilitation. All garbage is collected by UNRWA sanitation labourers from the camp and disposed into ten containers. Nablus Municipality is responsible for transportation of garbage to the municipal dumping site through municipal skip lifter. UNRWA asphalted approximately 44% of the camp's roads, and concreted the remaining pathways with the assistance of Local Camp Committee. The CSO highlighted the urgent need for rehabilitation of the asphalted and concreted paths. Maintenance is mainly done by UNRWA.

#### 5. Socio-Economic Profile

(RSSP/WB Field, Dec. 2007)	Special Hardship Cases (SHC)	489 families
	emergency cases	2,602 families
	beneficiaries of MMD (2007)	55 (total value of loans \$52,119)
Household poverty rate (HHE Study/ WB Field, 2nd half 2007)	44.2% (27.9% absolute poverty)	
Average monthly household income (HHE Study/ WB Field, 2nd half 2007)	NIS 1,866	
Employment statistics (HHE Study/ WB Field, 2nd half 2007)	employment rate	71.9%
	female employment rate	NA
	unemployment rate	28.1% (ILO Definition)
Unemployment statistics (HHE Study/ WB Field, 2nd half 2007)	unemployment rate	28.1% (ILO Definition)
	female unemployment rate	NA

Classification of active labour force (HHE Study/ WB Field, 2nd half 2007)	UNRWA employees	7%
	public sector	20%
	private sector	70%
	Inter/NGO organisations	2%
Number of commercial stores (CSO/2007)	235	
Location of commercial activity (CSO/2007)	The majority of shops and workshops stretch along the main street in the camp .	
Commercial sector rating (CSO & UNRWA Research Office/WB Field, 2006)	1. Grocery & Minimarket	26%
	2. Butchery	9%
	3. Manufacturing/selling of construction material	9%
	4. Electornics & appliances	7%
Other economic activity (workshops, factories, etc.) (CSO/2007)	workshops	27
	factories	0
	other	35 livestock raising yards
Owners of enterprises (CSO/2007)	camp residents	90%
	residents of neighboring areas	10%
Customers of enterprises (CSO/2007)	camp residents	75%
	from outside the camp	25%
Notes		

## 6. Organisations/ Programmes/ Activities

UNRWA services within refugee camps (CSO/2007)	Camp Service Office (CSO)	1
	Boys schools	1 (elementary 954, prep. 550)
	Girl schools	1 (element. 574/ 2 shifts, prep.727)
	Co-Educational	1 (element. 574, prep. 113)
	Health centre	1 (3,912 active family files)
	Physiotherapy Unit	0
	Distribution Centre	1
	Employment Guidance Centre	0
Level of education (HHE Study/ WB Field, 2nd half 2007)		
% of individuals with health insurance (HHE Study/ WB Field, 2nd half 2007)	83%	
Other institutions: NGOs, CBOs (CSO/2007)	Women's Programme Centre	1
	Youth Activity Centre	1
	Children's Centre	2 (Safeer, Hewar Centres)
	Kindergartens	3
	Health Clinics	3 (PA clinic, Al-Quran & Al-Suna Association, 1 private)
	Community Based Rehab. Centre	1
	Other communal organisations	2 mosques
		3 libraries (affiliated to : (WPC, Youth Centre, Communal Development Centre)
		1 Arts Centre (Dar Al-Fonon)
Local Committees/ Popular Committees	Head of Local Committee	Abed Al-Nasser Sirafi
	number of active members	18
	location of LC building	near the public park, the PA clinic
	date of establishment	1995
	main activities in the camp	1: Providing assistances to the residents from other sources than UNRWA, i.e. PA
		2: Searching for project funding
		such as the renewal of the Water Network project implemented in the camp.
Notes	The PA clinic only serves public security officers and their families. One Communal Development Centre is also present in the camp established in 2002, under the supervision of the Local Committees and the Based Rehabilitation Centre providing summer camps, music, folkloric activities; children and women are the most benefiting parties of the centre.	