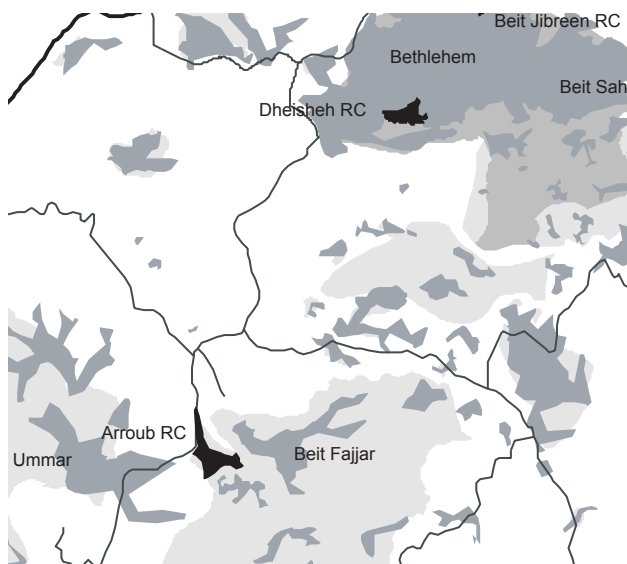
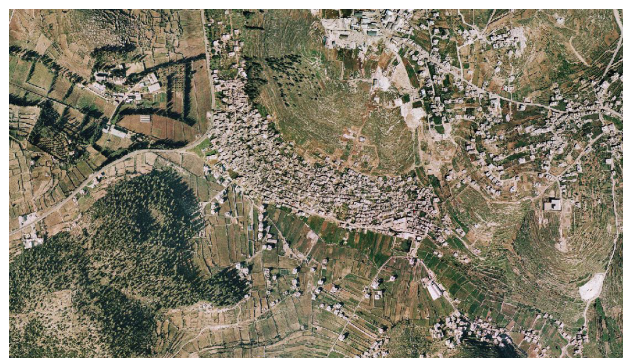


Arroub Refugee Camp Profile



source: Good Shepherd Engineering and Computing Company, Bethlehem/ date: 2005



source: OFEK aerial photography LTD/ date: 2005

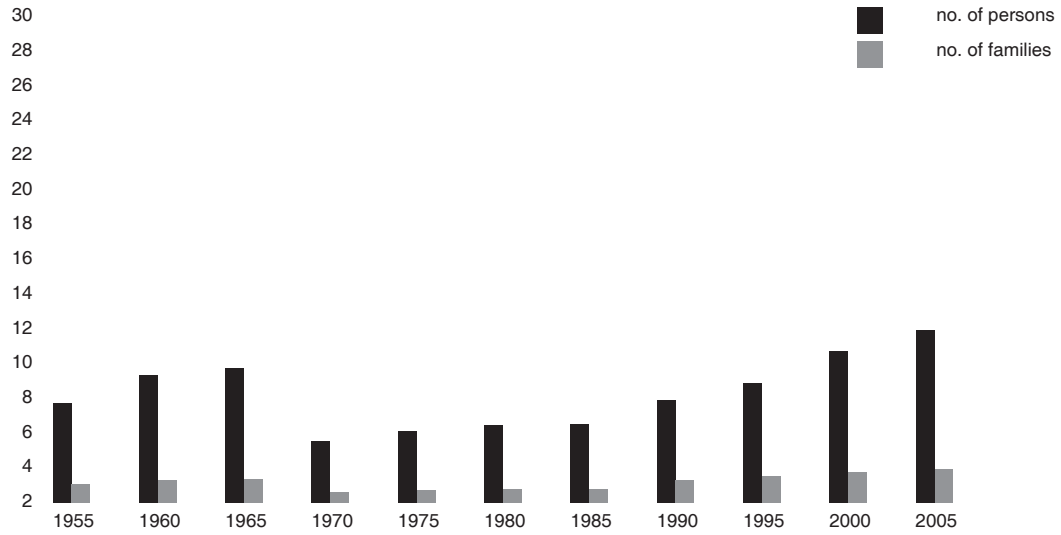
1. General Information

HQ or Field	West Bank
Camp name/ area	Arroub Camp / Hebron Area
Location	On the main road between Bethlehem and Hebron, 15km south of Bethlehem
Status of camp (official, non-official, gathering)	Official camp
Year of establishment	1949
Legal status of land	Private land 77.6% (including 0.17% Custodian of Enemy Property) Government land 22.4%, see notes below
Historical background	Original inhabitants came from 33 villages in Ramleh, Hebron and Gaza areas, mainly Ramleh and Aker; Zakaiyeh, Beit Jibrin, Al Mugar and Al Fallouje; Iraq Al Manshiyeh, Qastina and Ajjour.
Places of origin	Some families descend from the same origin or village, such as Al Titi, Al-Badawi and Ajajreh neighbourhoods.
Area at establishment (UNRWA records)	241 dunums/ 0.241 km sq
Area at present (CD Pilot Research Project, 2006)	242 dunums/ 0.242 km sq
Notes	All West Bank camps were set up on plots of land leased by UNRWA from the Hashemite Kingdom of Jordan (ref. Agreement between the Government of the Hashemite Kingdom of Jordan and UNRWA, 14/03/1951). No lease agreement with private individuals. When camps were established, most of the land was already state land, while small private plots had been leased by the host government from local landowners

2. Demographic Profile

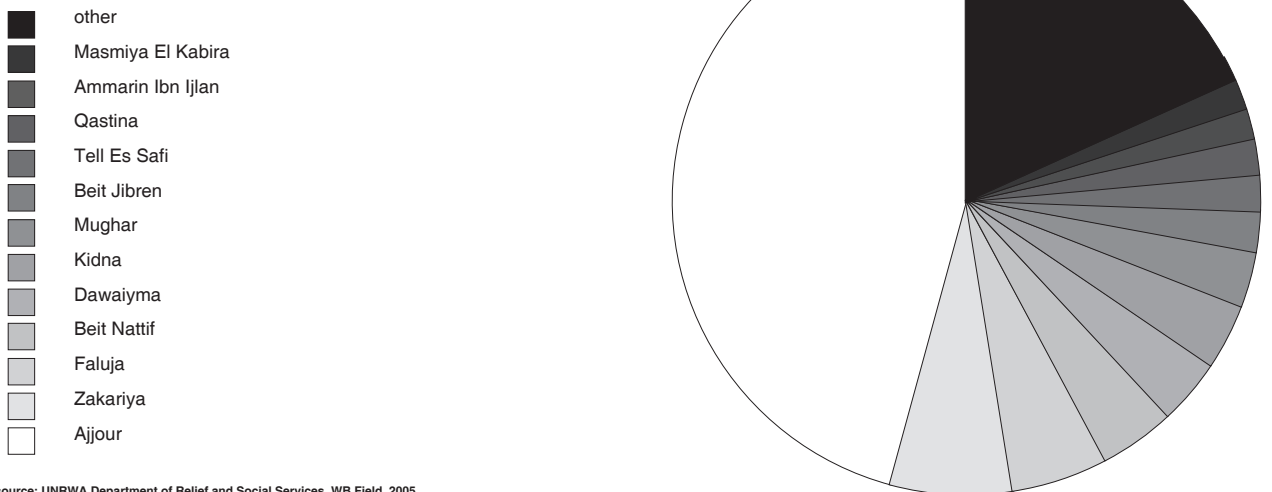
UNRWA registered camp population at establishment	8,353 persons (UNRWA record before March 1967)	
UNRWA registered camp population at present	10,444 persons (UNRWA Registration Statistical Bulletin/ Q4, 2007)	
Estimated actual camp residents inside UNRWA's official camp boundaries	total:	7,520 (estimate by CSO, 2007)
	local camp code:	7,434 (estimate by CSO, 2007)
	other camp codes:	0 (estimate by CSO, 2007)
	non-refugees:	86 (estimate by CSO, 2007)
Gender (HHE Study/ WB Field, 2nd half 2007)	M	49.8%
	F	50.2%
Age groups (HHE Study/ WB Field, 2nd half 2007)	0-14	42.7%
	15-24	19.8%
	25-60	32.8%
	over 60	4.7%
Age average (HHE Study/ WB Field, 2nd half 2007)	22.4	
Marital status > 14 years of age (RSSP/ WB Field, Dec. 2007)	single	M 47.1% F 44.3%
	married	M 52.6% F 48.5%
	divorced	M 0.1% F 0.7%
	widow	M 0.1% F 6.5%
Average family size (HHE Study/ WB Field, 2nd half 2007)	5.2	

Demographic development



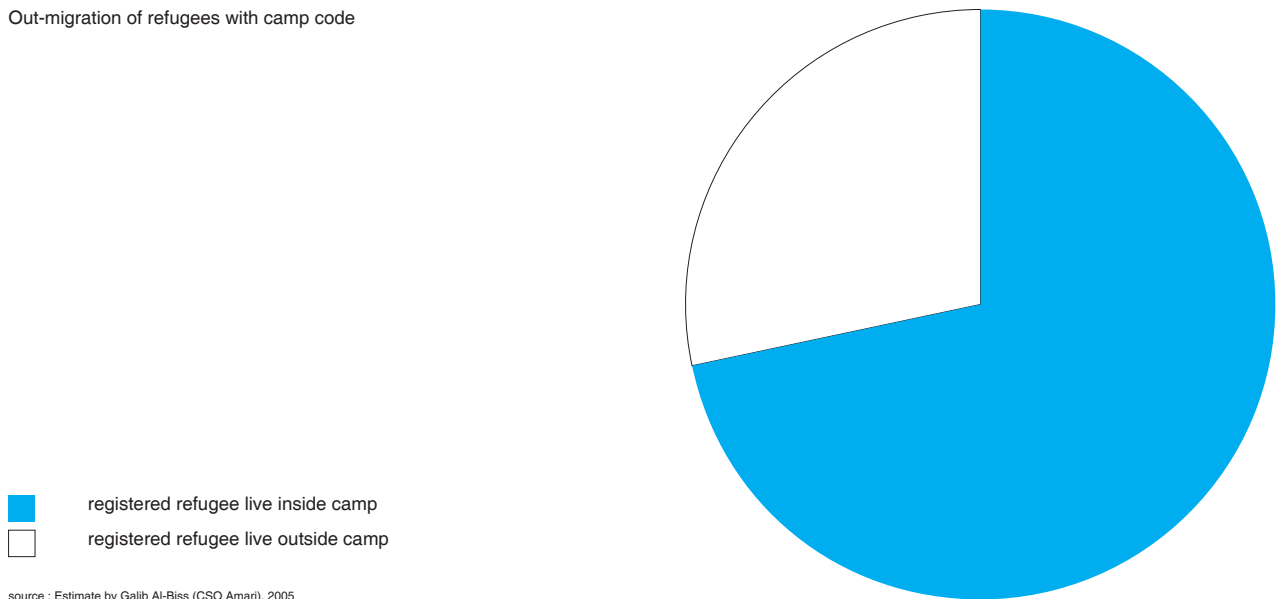
source: UNRWA Department of Relief and Social Services, WB Field, 2005

Places of origin with camp code



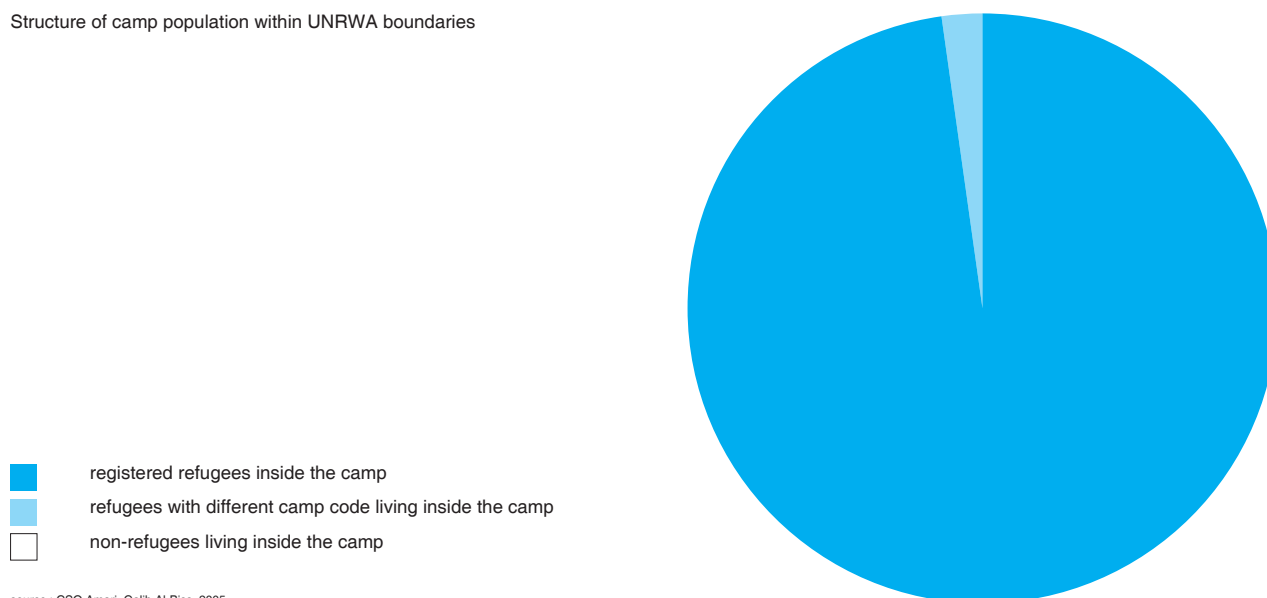
source: UNRWA Department of Relief and Social Services, WB Field, 2005

Out-migration of refugees with camp code



source : Estimate by Galib Al-Biss (CSO Amari), 2005

Structure of camp population within UNRWA boundaries



source : CSO Amari, Galib Al-Biss, 2005

Average household size (HHE Study/ WB Field, 2nd half 2007) 5.8





3. Spatial/ Physical Conditions

No of shelters at establishment (UNRWA records)	807 units built by UNRWA	
No of shelters at present (Engineering Dept./ WB Field, 2005)	1,350 units, including upper floors	
Building materials (HHE Study/ WB Field, 2nd half 2007)	stone	11.7%
	concrete	0.5%
	cement bricks	87.8%
	asbestos, wood, zinc	0%
	cloth, mud, staw	0%
	other	0%
Verticalisation/ number of floors (CSO/ 2007)	ground floor	15 %
	1 floor	50%
	2 floor	33 %
	more than 2 floors	2%
Estimation of density (CD Pilot Research Project, 2006)	est. actual population/ total area (Hac) 167.8 person/hac	
(CD Pilot Research Project, 2006)	percentage of built up area 29.%	
(CD Pilot Research Project, 2006 based on floor area estimate by CSO)	Floor Space Index FSI (built up area x avarage no. of floors / total area) 0.65	
Names of main quarters & blocks	NA	
External communal/ public spaces (CSO/2007)	playgrounds	0
	parks	0
	football fields	0
	other open spaces used by residents	0
Vehicles and parking (CSO/2007)	There are more than 65 private and public vehicles in the camp.	
Notes		

4. Technical Infrastructure/ Services

Water supplier (UNRWA Sanitation Division /WB Field, 2007)	Hebron Municipality	
Owner of distribution network (UNRWA Sanitation Division /WB Field, 2007)	Hebron Municipality	
Average water available per person (UNRWA Sanitation Div/WB Field, 2007)	77.5 l/ day (capacity)	
Water quality (UNRWA Sanitation Division / WB Field, Dec. 2007)	100% of water sample meeting WHO standards for bacteriology test	
Water supply to individual shelters (per cent)	100% (all shelters have indoor water connection)	
Electrical services (CSO/2007)	Jerusalem District Electrical Company (100% of shelters)	
Provider for telecommunications (land lines) (CSO/2007)	PAL-COM (Palestinian)	
Sewer disposal facilities (CSO/2007)	cesspits	yes
	public sewage network	yes (owner: Hebron Municipality)
	private sewage connection (sharing)	no
	open channels	no
Solid waste collection services (garbage collection)	UNRWA	yes
	dumped on road sides/ vacant lots	no
Storm-water drainage	no	
Road surfaces (CSO/2007)	asphalt	10%
	unpaved	0%
	concrete	90%
No. of sanitation labourers (Needs Assessment Report/ WB Field, Jun. 2008)	11	

Internal spatial distribution

-  UNRWA service area include open gardens and open areas
-  private open spaces include private paved and garden areas
-  streets/ paths
-  built up area exclude UNRWA building



source : Camp Development Pilot Research Project, 2006

Notes

The great majority of shelters (99%) are connected to Public Sewerage network. The remaining 1% have private latrines connected to percolation pits. All garbage is collected by UNRWA sanitation labourers and disposed outside the camp by UNRWA compactor truck.

UNRWA asphalted approximately 10% of the camp's roads , and concreted the remaining pathways with the assistance of Local Camp Committee. Maintenance is mainly accomplished by UNRWA.

5. Socio-Economic Profile

(RSSP/ WB, Dec. 2007)	Special Hardship Cases (SHC)	255 families
	emergency cases	1,129 families
	beneficiaries of MMD	0
Household poverty rate (HHE Study/ WB Field, 2nd half 2007)	27.1% (15.2% absolute poverty)	
Average monthly household income (HHE Study/ WB Field, 2nd half 2007)	NIS 1,692	
Employment statistics (HHE Study/ WB Field, 2nd half 2007)	employment rate	70.1%
	female employment rate	NA
Unemployment statistics (HHE Study/ WB Field, 2nd half 2007)	unemployment rate	29.9% (ILO Definition)
	female unemployment rate	NA
Classification of active labour force (HHE Study/ WB Field, 2nd half 2007)	UNRWA employees	19%

	public sector	46%
	private sector	32%
	Inter/NGO organisations	2%
Number of commercial stores (CSO/ 2007)	195	
Location of commercial activity (CSO/ 2006)	The majority exist in a market like; few small groceries which were established within the home premises scatter all over the camp	
Commercial sector rating (CSO & UNRWA Research Office/WB, 2006)	1. Grocery & minimarket	36%
	2. Manufacturing/selling of construction materials	9%
	3. Carpentries & furniture selling	8%
	4. Clothes & shoes	6%
Other economic activity (workshops, factories, etc.) (CSO,2007)	workshops	6 (aluminum, iron and carpentry)
	factories	1 producing solar boilers & water tanks
	other	0
Owners of enterprises (CSO/2007)	camp residents	100%
	residents of neighboring areas	0 %
Customers of enterprises (CSO/2007)	camp residents	100%
	from outside the camp	0%
Notes	A relative increase in the total number of enterprises was noticed as a result of the high unemployment rate due to inaccessibility to the Israeli labour market.	

6. Organisations/ Programmes/ Activities

UNRWA services within refugee camps (2007)	Camp Service Office (CSO)	1	
	Boys schools	1 (elementary 681, prep. 362/ 2 shifts)	
	Girl schools	1 (element. 215, prep.366) 1 (element. only 476)	
	Health centre	1 (2,880 active family files)	
	Physiotherapy Unit	0	
	Distribution Centre	1	
	Employment Guidance Centre	0	
	Level of education (HHE Study/ WB Field, 2nd half 2007)	43.7%	
	% of individuals with health insurance (HHE Study/ WB Field, 2nd half 2007)	43.7%	
Other institutions: NGOs, CBOs (CSO/2007)	Women Programme Centre	1	
	Health Clinics	4 (Al-Ihsan Medical Centre, 2 private dentists, 1 optical)	
	Youth Activity Centre	1	
	Children Centre	1	
	Kindergartens	4	
	Community Based Rehab. Centre	1(inactive)	
	Other communal organisations	1 mosque 1 library (affiliated to the Youth Centre)	
		Al-Arroub Ladies Charity Associa.	
		Al-Bairaq Cultural Centre	
	Local Committees/ Popular Committees	Head of Local Committee	
number of active members			
location of LC building			
date of establishment			
main activities in the camp			
Notes	UNRWA Arroub Elementary School was expanded in 2006 through Norwegian funding. The Women and the Youth Centres are very active: they organize sport and cultural activities in addition to trainings. The Zakat Committee was closed in 2007 with negative consequences in terms of social and economic assistance to the camp residents.		