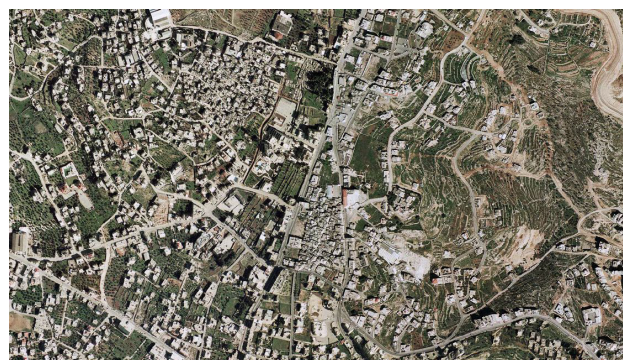


source: Good Shepherd Engineering and Computing Company, Bethlehem/ date: 2005



source: OFEK aerial photography LTD/ date: 2005

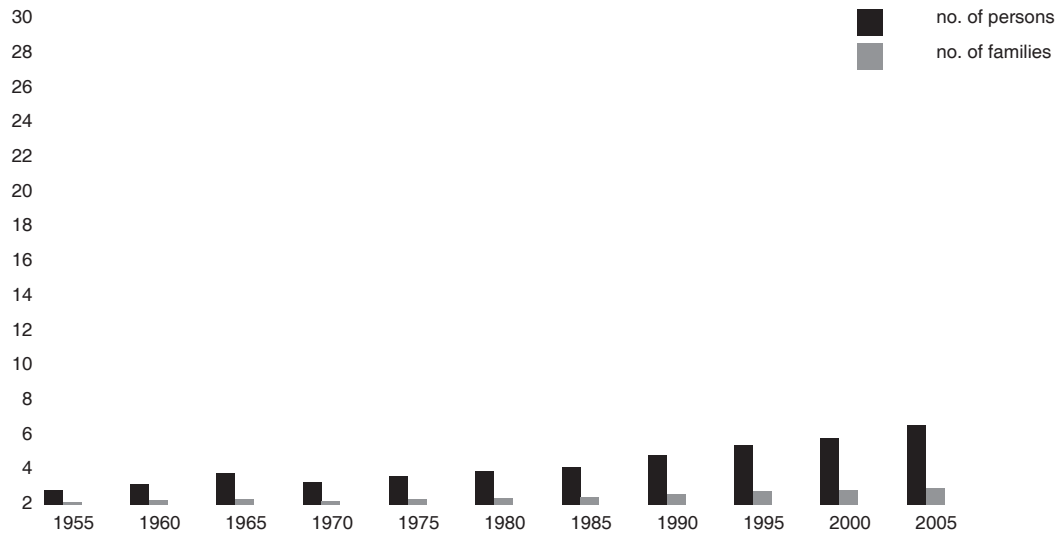
1. General Information

HQ or Field	West Bank
Camp name/ area	Aida Camp / Hebron Area
Location	Between Bethlehem and Beit Jalla
Status of camp (official, non-official, gathering)	Official camp
Year of establishment	1950
Legal status of land	private land (100%), government land (0%), see notes below
Historical background	Original inhabitants came from 17 destroyed villages in western Jerusalem and western Hebron areas, mainly Beit Natif, Deir Aban, Ras Abu Amar, Malha and Allar; Beit Jibrin and Ajjour.
Places of origin	Some families descend from the same origin or village such as Samaneh, Dar Abo Sror neighbourhoods
Area at establishment (UNRWA records)	66 dunums/ 0.066 km sq
Are at present (CD Pilot Research Project, 2006)	71 dunums/ 0.071 km sq
Notes	All West Bank camps were set up on plots of land leased by UNRWA from the Hashemite Kingdom of Jordan (ref. Agreement between the Government of the Hashemite Kingdom of Jordan and UNRWA, 14/03/1951). No lease agreement with private individuals. When camps were established, most of the land was already state land, while small private plots had been leased by the host government from local landowners

2. Demographic Profile

UNRWA registered camp population at establishment	1,977 persons (UNRWA record before March 1967)		
UNRWA registered camp population at present	4,787 persons (UNRWA Registration Statistical Bulletin/ Q4, 2007)		
Estimated actual camp residents inside UNRWA's official camp boundaries	total:	5,000 (estimate by CSO, 2007)	
	local camp code:	4,879 (estimate by CSO, 2007)	
	other camp codes:	100 (estimate by CSO, 2007)	
	non-refugees:	21 (estimate by CSO, 2007)	
Gender (HHE Study/ WB Field, 2nd half 2007)	M	49.6%	
	F	50.4%	
Age groups (HHE Study/ WB Field, 2nd half 2007)	0-14	38.7%	
	15-24	22.1%	
	25-60	34.6%	
	over 60	4.5%	
Age average (HHE Study/ WB Field, 2nd half 2007)	23.2		
Marital status > 14 years of age (RSSP/ WB Field, Dec. 2007)	single	M 45.5%	F 41.6%
	married	M 54.7%	F 49.4%
	divorced	M 0.2%	F 1.7%
	widow	M 0.1%	F 7.3%
	Average family size (HHE Study/ WB Field, 2nd half 2007)	4.8	

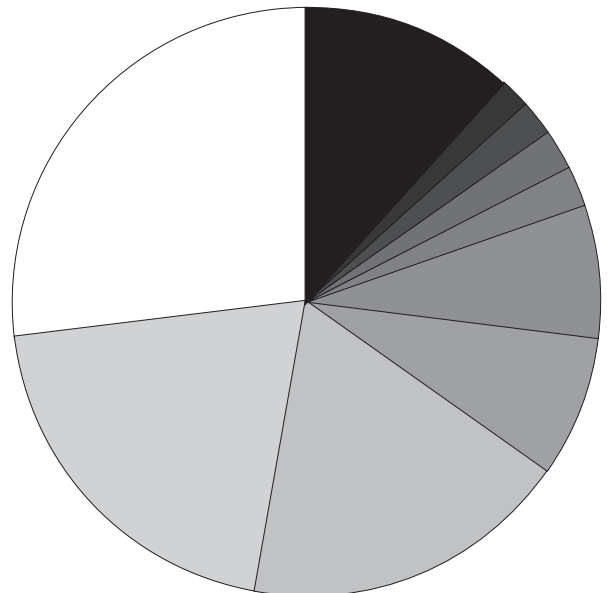
Demographic development



source: UNRWA Department of Relief and Social Services, WB Field, 2005

Places of origin with camp code

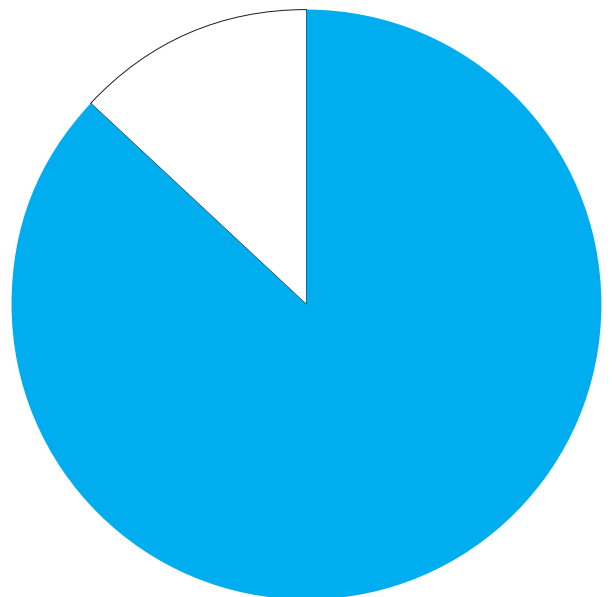
- other
- Walaja
- Khirbet El Umur
- Qabu
- Ajjur
- Allar
- Deir Aban
- Maliha
- Ras Abu Ammar
- Beit Nattif



source: UNRWA Department of Relief and Social Services, WB Field, 2005

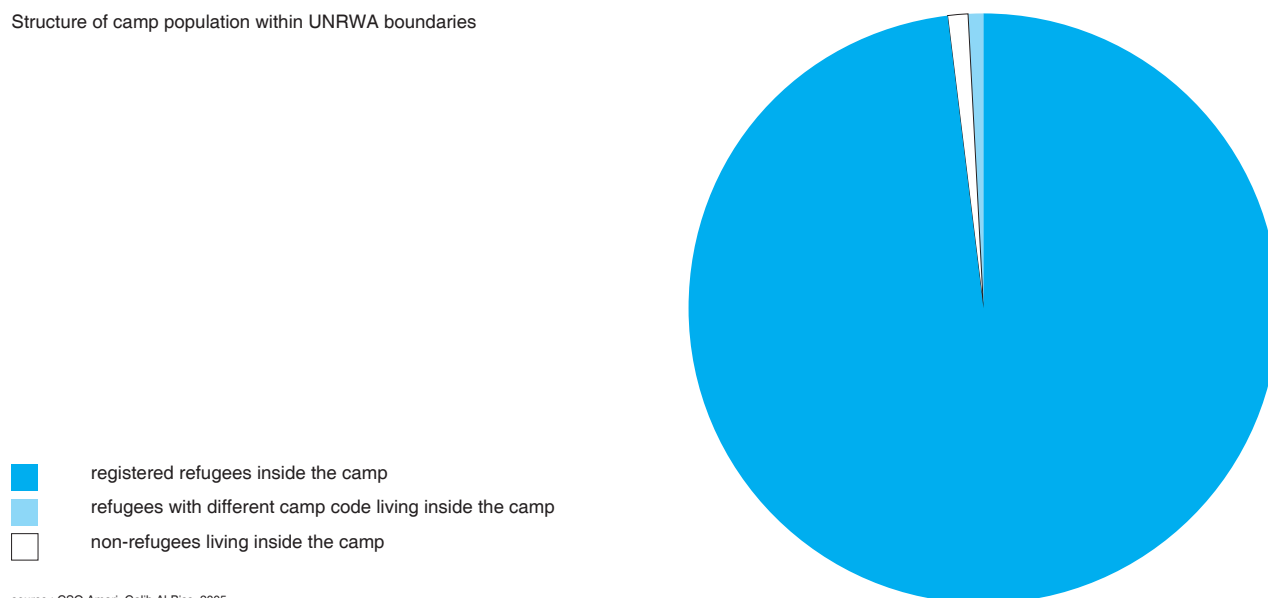
Out-migration of refugees with camp code

- registered refugee live inside camp
- registered refugee live outside camp



source : Estimate by Galib Al-Biss (CSO Amari), 2005

Structure of camp population within UNRWA boundaries



source : CSO Amari, Galib Al-Biss, 2005

Average household size (HHE Study/ WB Field, 2nd half 2007) 5.5





3. Spatial/ Physical Conditions

No of shelters at establishment (UNRWA records)	94 units built by UNRWA	
No of shelters at present (CSO, 2007)	300 units, including upper floors	
Building materials (HHE Study/ WB Field, 2nd half 2007)	stone	8.1%
	lconcrete	2.5%
	cement bricks	89.4%
	asbestos, wood, zinc	0%
	cloth, mud, straw	0%
	other	0%
	Verticalisation/ number of floors (CSO/2007)	ground floor
1 floor		25%
2 floor		30%
more than 2 floors		30%
Estimation of density (CD Pilot Research Project, 2006)	est. actual population/ total area (Hac) 577.1 person/hac	
(CD Pilot Research Project, 2006)	percentage of built up area 48.9%	
(CD Pilot Research Project, 2006 based on floor area estimate by CSO)	Floor Space Index FSI (built up area x avarage no. of floors / total area)	
	1.00	
Names of main quarters & blocks	NA	
External communal/ public spaces	playgrounds	0
	parks	0
	football fields	0
	other open spaces used by residents	0
	Vehicles and parking (CSO/2007)	There are 70 vehicles in the camp of which 60 are private unregistered cars.
Notes	20% of the camp vehicles park in private spaces and 80% park on the sides of the road of the camp.	

4. Technical Infrastructure/ Services

Water supplier (UNRWA Sanitation Division /WB Field, 2007)	Bethlehem Water & Sewerage Authority (BWSA)	
Owner of distribution network (UNRWA Sanitation Division /WB Field,2007)	Bethlehem Water & Sewerage Authority (BWSA)	
Average water available per person (UNRWA Sanitation Div WB Field,2007)	60 l/ day (capacity)	
Water quality (UNRWA Sanitation Division/ WB Field, Dec. 2007)	100% of water sample meeting WHO standards for bacteriology test	
Water supply to individual shelters (per cent)	100% (all shelters have indoor water connection)	
Electrical services	Jerusalem District Electrical Company (100% of shelters)	
Provider for telecommunications (land lines)	PAL-COM (Palestinian)	
Sewer disposal facilities	cesspits	no
	public sewage network	yes (owner: BWSA)
	private sewage connection (sharing)	no
	open channels	no
Solid waste collection services (garbage collection)	UNRWA	yes
	dumped on road sides/ vacant lots	yes
Storm-water drainage	no	
Road surfaces (CSO/2007)	asphalt	15%
	unpaved	0%
	concrete	85%
No. of sanitation labourers (Needs Assessment Report/ WB Field, Jun. 2008)	6	

Internal spatial distribution

-  UNRWA service area include open gardens and open areas
-  private open spaces include private paved and garden areas
-  streets/ paths
-  built up area exclude UNRWA building



source : Camp Development Pilot Research Project, 2006

Notes

All garbage is collected by UNRWA sanitation labourers and disposed outside the camp by UNRWA compactor truck. UNRWA asphalted approximately 15% of the camp's roads, and concreted the remaining pathways with the assistance of local camp committee. Maintenance is mainly accomplished by UNRWA.

5. Socio-Economic Profile

(RSSP /WB, Dec. 2007)	Special Hardship Cases (SHC)	144 families
	emergency cases	506 families
	beneficiaries of MMD (2007)	7 (total value of loans: \$7,486)
Household poverty rate (HHE Study/ WB Field, 2nd half 2007)	20.6% (8.7% absolute poverty)	
Average monthly household income (HHE Study/ WB Field, 2nd half 2007)	NIS 957	
Employment statistics (HHE Study/ WB Field, 2nd half 2007)	employment rate	56.6%
	female employment rate	NA
Unemployment statistics (HHE Study/ WB Field, 2nd half 2007)	unemployment rate	43.4% (ILO Definition)
	female unemployment rate	NA

Classification of active labour force (HHE Study/ WB Field, 2nd half 2007)	UNRWA employees	5%
	public sector	28%
	private sector	63%
	Inter/NGO organisations	3%
Number of commercial stores (CSO/ 2006)	40	
Location of commercial activity (CSO/ 2006)	The majority of shops and workshops stretch along the main street in the camp. A few small groceries, which were established within the camp quarters are scattered all over the camp.	
Commercial sector rating (CSO & UNRWA Research Office/ WB, 2006)	1. Grocery & minimarket	48%
	2. Butchery	10%
	3. Restaurant, bar, coffee shop	8%
	4. Clothes & shoes	8%
Other economic activity	workshops	0
	factories	0
	other	NA
Owners of enterprises (CSO/2007)	camp residents	100%
	residents of neighboring areas	0%
Customers of enterprises (CSO/2007)	camp residents	100%
	from outside the camp	0%
Notes	A relative increase in the total number of enterprises was noticed as a result of the high unemployment rate due to inaccessibility to the Israeli labour market.	

6. Organisations/ Programmes/ Activities

UNRWA services within refugee camps (2007)	Camp Service Office (CSO)	1
	Boys schools	0
	Girl schools	1 (element.424, prep.221/ 2 shifts)
	Health centre	0 (patients go to Dheisheh Camp or Bethlehem)
	Physiotherapy Unit	1 (Emergency)
	Distribution Centre	1
	Employment Guidance Centre	0
Level of education (HHE Study/ WB Field, 2nd half 2007)		
% of individuals with health insurance (HHE Study/ WB Field, 2nd half 2007)	83%	
Other institutions: NGOs, CBOs (CSO/2007)	Women Programme Centre	0
	Youth Activity Centre	1
	Children Centre	2 (Al-Ruwad Centre, Laje' Centre)
	Kindergartens	6 (3 private, 3 local centres)
	Community Based Rehab. Centre	1 (community mental health point)
	Other communal organisations	2 mosques
Local Committees/ Popular Committees-	Head of Local Committee	
	number of active members	
	location of LC building	
	date of establishment	
	main activities in the camp	
Notes	Male children from Aida Camp study in Beit Jala Boys school nearby (elementary 377, prep. 203). The Youth Activity Centre of Aida Camp is also used by women in the morning for cultural and fitness activities. Al-Ruwad Centre organizes cultural activities and runs an educational enhancement programme for children. The Laje' Centre provides educational and cultural services to children. Amal Al-Mustakbal Centre provides services to women and runs a kindergarten.	