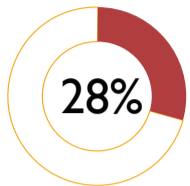
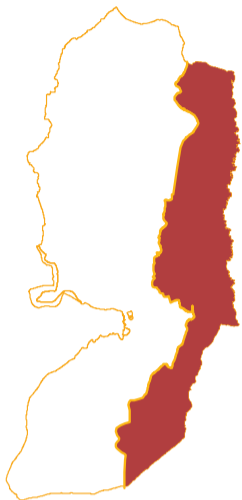




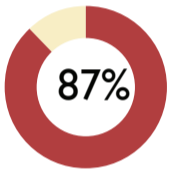
Jordan Valley and Dead Sea area



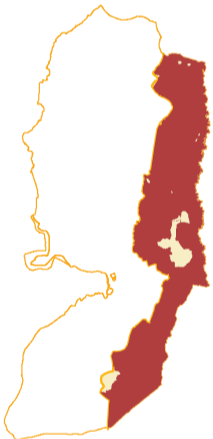
of West Bank



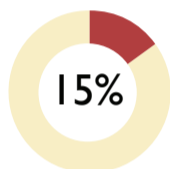
Area C



of Jordan Valley and Dead Sea area



Settlement Areas*

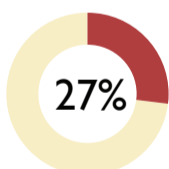


of Jordan Valley and Dead Sea area

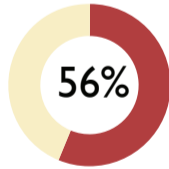


Nature Reserves

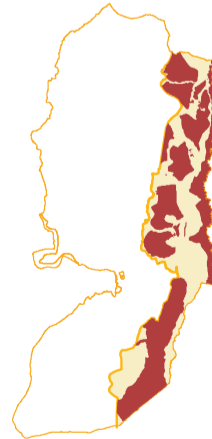
Israeli & "Wye River Memorandum"***



Closed Military Areas



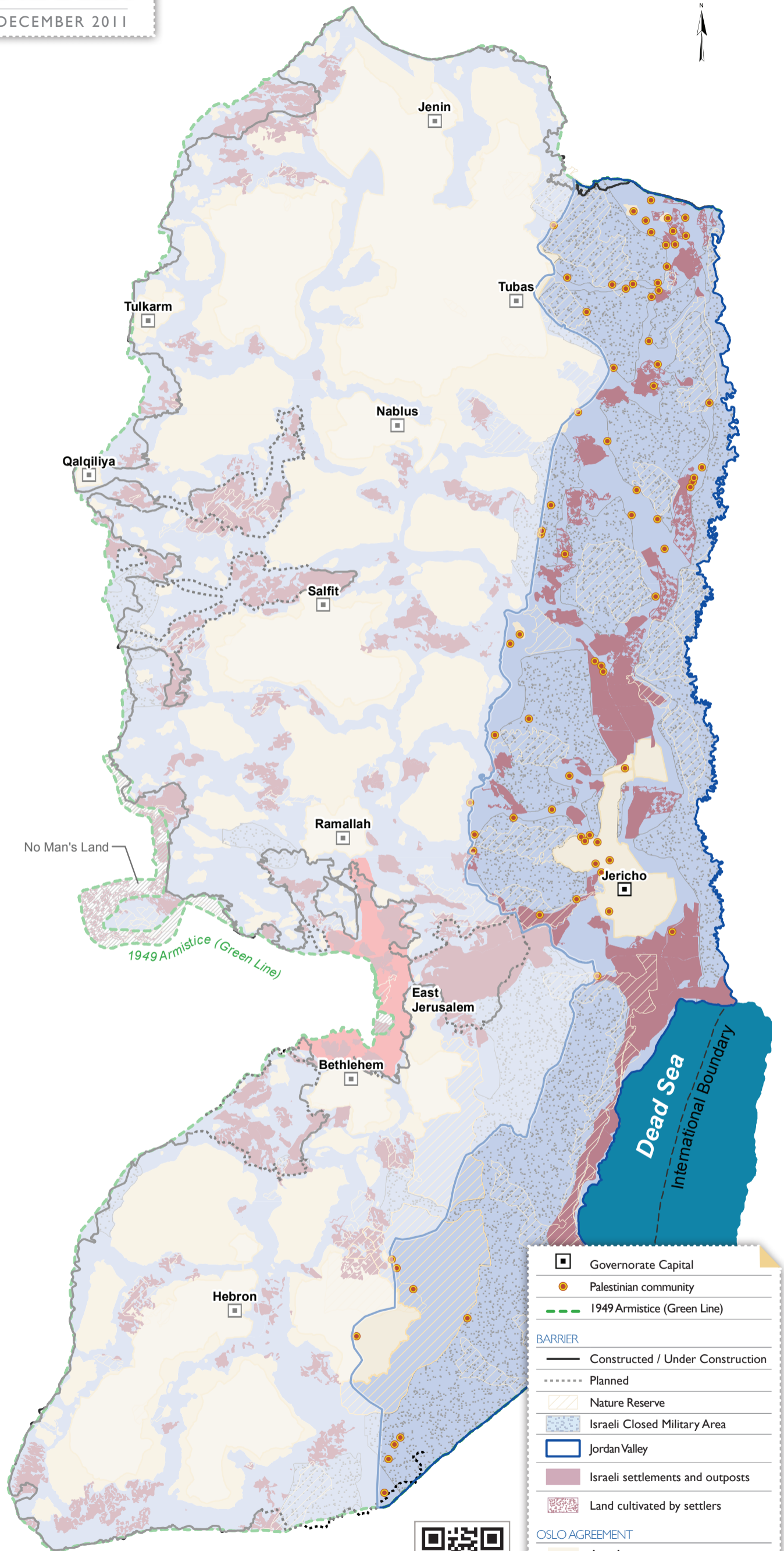
of Jordan Valley and Dead Sea area



* Includes settlement municipal boundaries, outer limits, outposts and land cultivated by settlers.

** Under the Wye River Memorandum of 1998, land reserves, amounting to approximately three percent of the West Bank, were supposed to be handed over to the PA to be set aside as a Green Area/Nature Reserve. To date, the PA has not been allowed to utilize this area.

➔ For more information, please refer to index on page 32.



	Governorate Capital
	Palestinian community
	1949 Armistice (Green Line)
BARRIER	
	Constructed / Under Construction
	Planned
	Nature Reserve
	Israeli Closed Military Area
	Jordan Valley
	Israeli settlements and outposts
	Land cultivated by settlers
OSLO AGREEMENT	
	Area A
	Area B
	Area C*
*Very limited delegation of powers to the Palestinian Authority	

