



United Nations Office for the Coordination of Humanitarian Affairs

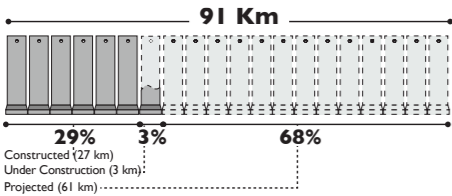
WEST BANK ACCESS RESTRICTIONS - SALFIT

DECEMBER 2011

SALFIT CLOSURES

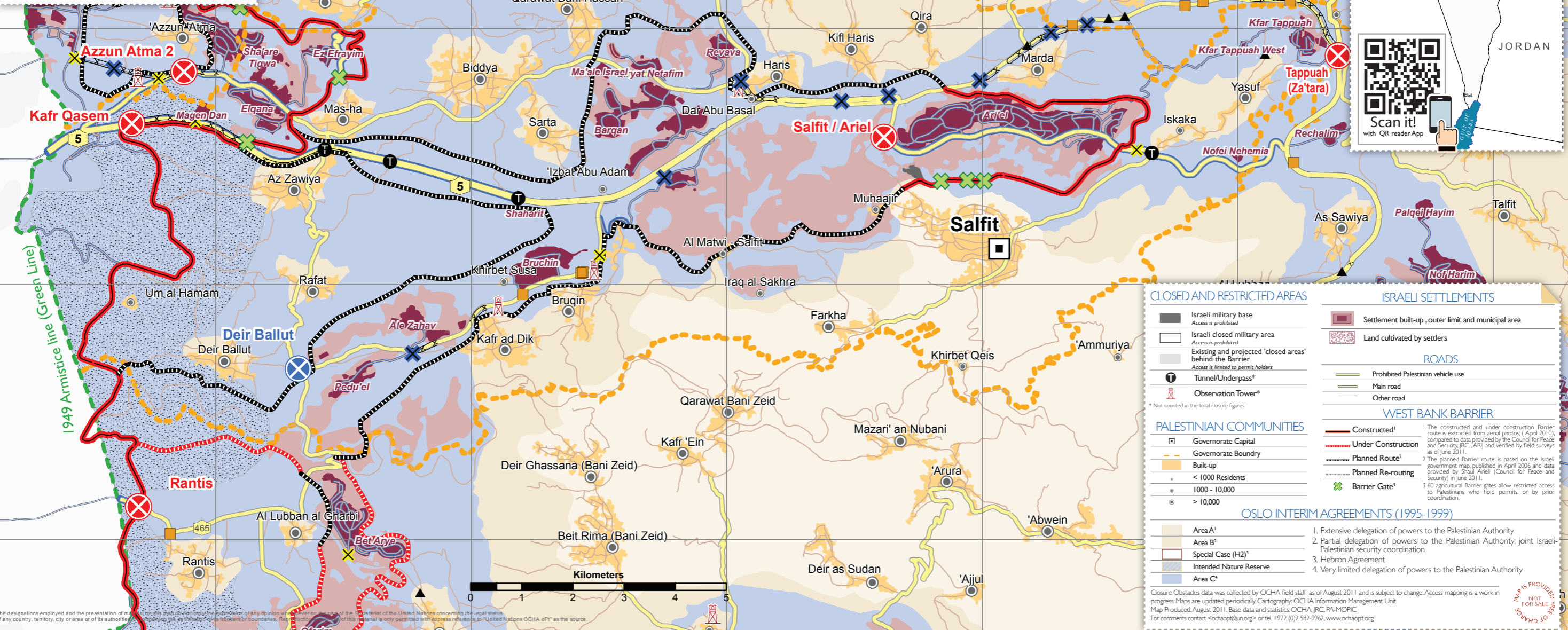
⊗	Checkpoints	3
⊗	Green Line Checkpoints	-
⊗	Partial Checkpoints	1
▲	Earthmounds	7
■	Roadblocks	3
⊗	Road Gates	11
----	Trenches	-
⊗	Earth Walls	1 - 157m
⊗	Road Barriers	11 - 8,701m
TOTAL		37

THE BARRIER IN SALFIT



Occupied Palestinian territory

- International Border
- Green Line



CLOSED AND RESTRICTED AREAS

- Israeli military base
Access is prohibited
- Israeli closed military area
Access is prohibited
- Existing and projected 'closed areas' behind the Barrier
Access is limited to permit holders
- Tunnel/Underpass*
- Observation Tower*

PALESTINIAN COMMUNITIES

- Governorate Capital
- Governorate Boundary
- Built-up
- < 1000 Residents
- 1000 - 10,000
- > 10,000

ISRAELI SETTLEMENTS

- Settlement built-up, outer limit and municipal area
- Land cultivated by settlers

OSLO INTERIM AGREEMENTS (1995-1999)

- Extensive delegation of powers to the Palestinian Authority
- Partial delegation of powers to the Palestinian Authority; joint Israeli-Palestinian security coordination
- Hebron Agreement
- Very limited delegation of powers to the Palestinian Authority

ISRAELI SETTLEMENTS

- Settlement built-up, outer limit and municipal area
- Land cultivated by settlers

WEST BANK BARRIER

- Constructed¹
- Under Construction
- Planned Route²
- Planned Re-routing
- Barrier Gate³

OSLO INTERIM AGREEMENTS (1995-1999)

- Extensive delegation of powers to the Palestinian Authority
- Partial delegation of powers to the Palestinian Authority; joint Israeli-Palestinian security coordination
- Hebron Agreement
- Very limited delegation of powers to the Palestinian Authority

Closure Obstacles data was collected by OCHA field staff as of August 2011 and is subject to change. Access mapping is a work in progress. Maps are updated periodically. Cartography: OCHA Information Management Unit. Map Produced: August 2011. Base data and statistics: OCHA, JRC, PA-MOPIC. For comments contact <ochaopt@un.org> or tel. +972 (0) 582-9962, www.ochaopt.org



13

12

11

10

9

C

D

E

F

G

H

I

8

LEBANON

ISRAEL

JORDAN

EGYPT

ISRAEL

ISRAELI SETTLEMENTS

OSLO INTERIM AGREEMENTS (1995-1999)

WEST BANK BARRIER

PALESTINIAN COMMUNITIES

CLOSED AND RESTRICTED AREAS

THE BARRIER IN SALFIT

SALFIT CLOSURES

UNITED NATIONS OFFICE FOR THE COORDINATION OF HUMANITARIAN AFFAIRS

WEST BANK ACCESS RESTRICTIONS - SALFIT

DECEMBER 2011

8

9

10

11

12

13

C

D

E

F

G

H

I

LEBANON

ISRAEL

JORDAN

EGYPT

ISRAEL

ISRAELI SETTLEMENTS

OSLO INTERIM AGREEMENTS (1995-1999)

WEST BANK BARRIER

PALESTINIAN COMMUNITIES

CLOSED AND RESTRICTED AREAS

THE BARRIER IN SALFIT

SALFIT CLOSURES

UNITED NATIONS OFFICE FOR THE COORDINATION OF HUMANITARIAN AFFAIRS

WEST BANK ACCESS RESTRICTIONS - SALFIT

DECEMBER 2011

8

9

10

11

12

13

C

D

E

F

G

H

I

LEBANON

ISRAEL

JORDAN

EGYPT

ISRAEL

ISRAELI SETTLEMENTS

OSLO INTERIM AGREEMENTS (1995-1999)

WEST BANK BARRIER

PALESTINIAN COMMUNITIES

CLOSED AND RESTRICTED AREAS

THE BARRIER IN SALFIT

SALFIT CLOSURES

UNITED NATIONS OFFICE FOR THE COORDINATION OF HUMANITARIAN AFFAIRS

WEST BANK ACCESS RESTRICTIONS - SALFIT

DECEMBER 2011

8

9

10

11

12

13

C

D

E

F

G

H

I

LEBANON

ISRAEL

JORDAN

EGYPT

ISRAEL

ISRAELI SETTLEMENTS

OSLO INTERIM AGREEMENTS (1995-1999)

WEST BANK BARRIER

PALESTINIAN COMMUNITIES

CLOSED AND RESTRICTED AREAS

THE BARRIER IN SALFIT

SALFIT CLOSURES

UNITED NATIONS OFFICE FOR THE COORDINATION OF HUMANITARIAN AFFAIRS

WEST BANK ACCESS RESTRICTIONS - SALFIT

DECEMBER 2011

8

9

10

11

12

13

C

D

E

F

G

H

I

LEBANON

ISRAEL

JORDAN

EGYPT

ISRAEL

ISRAELI SETTLEMENTS

OSLO INTERIM AGREEMENTS (1995-1999)

WEST BANK BARRIER

PALESTINIAN COMMUNITIES

CLOSED AND RESTRICTED AREAS

THE BARRIER IN SALFIT

SALFIT CLOSURES

UNITED NATIONS OFFICE FOR THE COORDINATION OF HUMANITARIAN AFFAIRS

WEST BANK ACCESS RESTRICTIONS - SALFIT

DECEMBER 2011

8

9

10

11

12

13

C

D

E

F

G

H

I

LEBANON

ISRAEL

JORDAN

EGYPT

ISRAEL

ISRAELI SETTLEMENTS

OSLO INTERIM AGREEMENTS (1995-1999)

WEST BANK BARRIER

PALESTINIAN COMMUNITIES

CLOSED AND RESTRICTED AREAS

THE BARRIER IN SALFIT

SALFIT CLOSURES

UNITED NATIONS OFFICE FOR THE COORDINATION OF HUMANITARIAN AFFAIRS

WEST BANK ACCESS RESTRICTIONS - SALFIT

DECEMBER 2011

8

9

10

11

12

13

C

D

E

F

G

H

I

LEBANON

ISRAEL

JORDAN

EGYPT

ISRAEL

ISRAELI SETTLEMENTS

OSLO INTERIM AGREEMENTS (1995-1999)

WEST BANK BARRIER

PALESTINIAN COMMUNITIES

CLOSED AND RESTRICTED AREAS

THE BARRIER IN SALFIT

SALFIT CLOSURES

UNITED NATIONS OFFICE FOR THE COORDINATION OF HUMANITARIAN AFFAIRS

WEST BANK ACCESS RESTRICTIONS - SALFIT

DECEMBER 2011

8

9

10

11

12

13

C

D

E

F

G

H

I

LEBANON

ISRAEL

JORDAN

EGYPT

ISRAEL

ISRAELI SETTLEMENTS

OSLO INTERIM AGREEMENTS (1995-1999)

WEST BANK BARRIER

PALESTINIAN COMMUNITIES

CLOSED AND RESTRICTED AREAS

THE BARRIER IN SALFIT

SALFIT CLOSURES

UNITED NATIONS OFFICE FOR THE COORDINATION OF HUMANITARIAN AFFAIRS

WEST BANK ACCESS RESTRICTIONS - SALFIT

DECEMBER 2011

8

9

10

11

12

13

C

D

E

F

G

H

I

LEBANON

ISRAEL

JORDAN

EGYPT

ISRAEL

ISRAELI SETTLEMENTS

OSLO INTERIM AGREEMENTS (1995-1999)

WEST BANK BARRIER

PALESTINIAN COMMUNITIES

CLOSED AND RESTRICTED AREAS

THE BARRIER IN SALFIT

SALFIT CLOSURES

UNITED NATIONS OFFICE FOR THE COORDINATION OF HUMANITARIAN AFFAIRS

WEST BANK ACCESS RESTRICTIONS - SALFIT

DECEMBER 2011

8

9

10

11

12

13

C

D

E

F

G

H

I