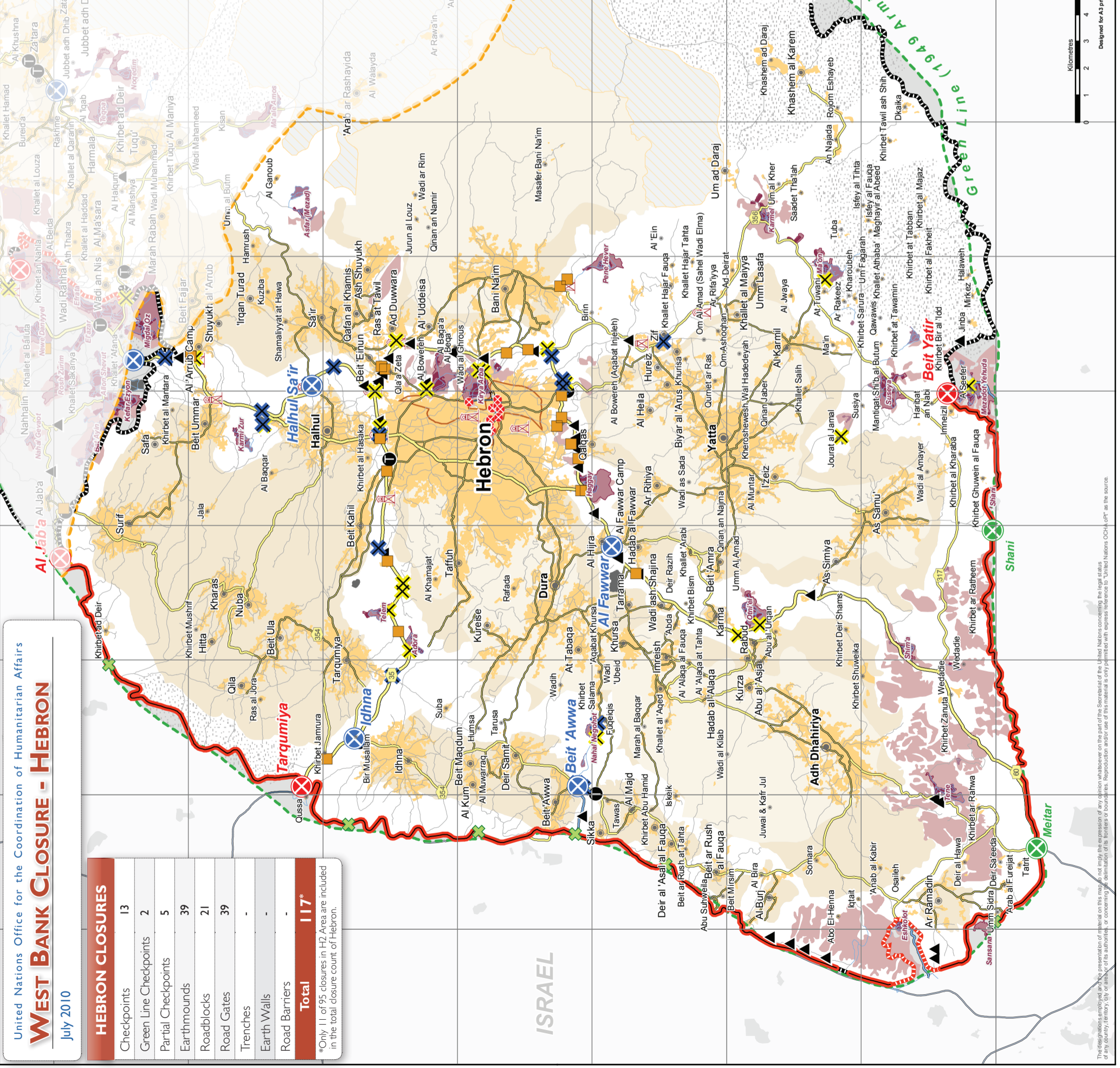
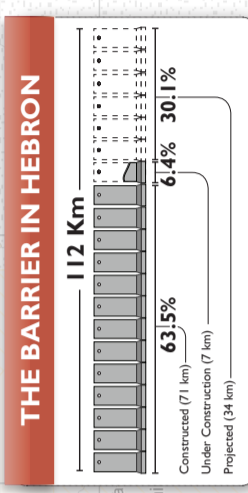
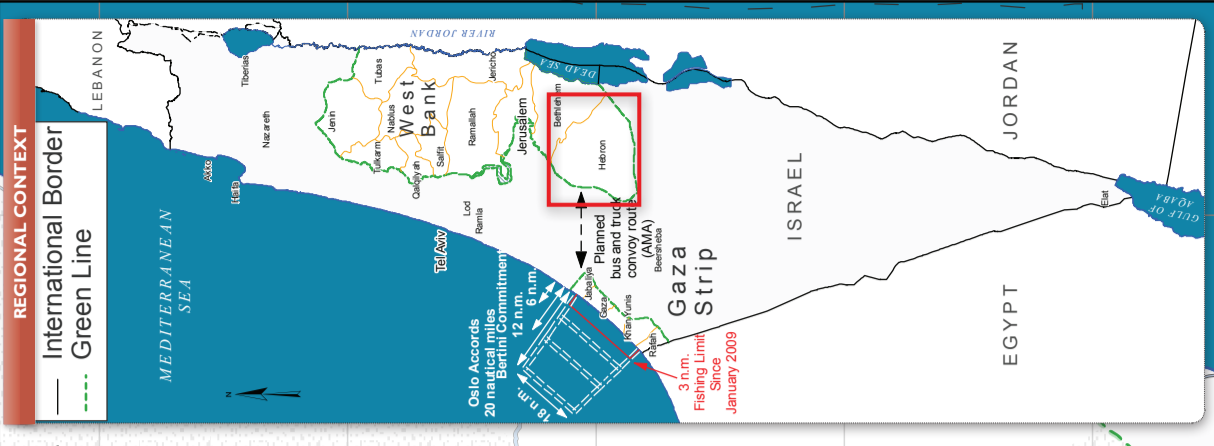


United Nations Office for the Coordination of Humanitarian Affairs
WEST BANK CLOSURE - HEBRON
 July 2010

HEBRON CLOSURES	
Checkpoints	13
Green Line Checkpoints	2
Partial Checkpoints	5
Earthmounds	39
Roadblocks	21
Road Gates	39
Trenches	-
Earth Walls	-
Road Barriers	-
Total	117*

*Only 11 of 95 closures in H2 Area are included in the total closure count of Hebron.



PHYSICAL CLOSURES

- Internal Checkpoint (fully staffed)
- Green Line Checkpoint*
- Internal Partial Checkpoint
- Road Gate normally closed
- Road Gate normally open
- Observation Tower
- Earthmound
- Roadblock
- Tunnel/Underpass*
- Earth Wall
- Road Barrier
- Trench

* Not counted in the total closure figures.

West Bank Barrier

- Constructed
- Under Construction
- Planned Route*
- Planned Re-routing
- Barrier Gate*

1. The constructed and under construction barriers are shown on aerial photographs (May 2009), compared to data provided by the Council for Peace and Security (C.P.S.) and verified by field surveys as of July 2010.
 2. The planned barrier route is based on the planned barrier route in the Shalal Area (Council for Peace and Security) in July 2009.
 3. Fifty-seven Barrier gates allow restricted access to Palestinians who hold permits, or by prior coordination.

Closed and Restricted Areas

- Israeli military base (Access is prohibited)
- Israeli closed military area (Access is prohibited)
- Existing and projected 'closed areas' (Access is limited to permit holders)

ACCESS

- Israeli Settlements: Outpost, Land cultivated by settlers, Settlement municipal area, Settlement built-up and outer limit
- Palestinian Areas: Built-up, Land cultivated by settlers
- Roads: Prohibited or Restricted Palestinian vehicle use, Main road, Other road

Oslo Interim Agreement (1994-1995)

- Area A'
- Area B'
- Area C'
- Special Case (H2)
- Intended Nature Reserve

1. Full Palestinian civil and security control
 2. Full Palestinian civil control and joint Israeli-Palestinian security control
 3. Hebron Agreement
 4. Full Israeli control over security, planning and construction

PHYSICAL CLOSURES

- Internal Checkpoint (fully staffed)
- Green Line Checkpoint*
- Internal Partial Checkpoint
- Road Gate normally closed
- Road Gate normally open
- Observation Tower
- Earthmound
- Roadblock
- Tunnel/Underpass*
- Earth Wall
- Road Barrier
- Trench

* Not counted in the total closure figures.

West Bank Barrier

- Constructed
- Under Construction
- Planned Route*
- Planned Re-routing
- Barrier Gate*

1. The constructed and under construction barriers are shown on aerial photographs (May 2009), compared to data provided by the Council for Peace and Security (C.P.S.) and verified by field surveys as of July 2010.
 2. The planned barrier route is based on the planned barrier route in the Shalal Area (Council for Peace and Security) in July 2009.
 3. Fifty-seven Barrier gates allow restricted access to Palestinians who hold permits, or by prior coordination.



Data applicable until July 2010. Access and closure data is collected by OCHA field staff and is subject to change. Access mapping is a work in progress. Maps are updated periodically.
 Cartography: OCHA Information Management Unit
 Map Produced: July 2010
 Base data and statistics: OCHA, JRC, PA-MOPIC
 For comments contact: ochaopt@un.org or tel. +972 (0)2 582-9962
 www.ochaopt.org

MAP IS PROVIDED FREE OF CHARGE NOT FOR SALE

This map was produced by the United Nations Office for the Coordination of Humanitarian Affairs (OCHA) as part of its humanitarian response to the conflict in the West Bank. The map is for informational purposes only and does not constitute an official position of the United Nations. Reproduction and/or use of this material is only permitted with express reference to 'United Nations OCHA' as the source.