



**Report No. 96**  
**Implementation of the Agreement on Movement and Access**  
**and Update on Gaza Crossings**  
**(08 - 21 July 09)**

The United Nations is submitting the 96<sup>th</sup> bi-weekly report on the implementation of the 15 November 2005 Agreement on Movement and Access (AMA)<sup>1</sup>, covering the period 08 - 21 July 09 (Annex)<sup>2</sup>. In light of the closure of Gaza, this report also monitors movement and access through other crossings not included in the AMA.

**Summary:**

**AMA Benchmarks:**

- **Rafah** crossing has remained closed for the movement of people for 773 working days. It was last open for public use on 09 June 2007. However, the crossing was partially open on an exceptional basis for passengers on all days during the reporting period compared to 13 days reported in the previous reporting period, allowing 342 authorized Palestinians, including many medical cases, to cross out, and 540 to cross in, compared to 1,893 departures and 3,407 arrivals in the previous reporting period.
- **Karni** crossing has remained closed since 12 June 2007 for the movement of goods in and out of Gaza. The conveyor belt/chute for cereals and animal feed was open on four days (08, 13, 15 and 20 July), the same as during the previous reporting period. A total of 208 truckloads of cereals and animal feed entered Gaza, via the conveyor belt, compared to 183 in the previous reporting period. Neither gravel nor bulk cement were allowed entry during this period. Gravel and bulk cement were last allowed into Gaza on 26 and 29 Oct 08 respectively.
- **Erez** crossing has remained closed for more than three years since 12 March 2006 for workers, and more than two years, since 12 June 2007, for all other Palestinians, except for a limited number of Palestinian senior traders, aid workers and medical cases who have been granted special permits. For these persons, Erez crossing was partially open on 12 days. No traders were allowed out during the reporting period and an average of 22 medical cases per day were allowed to cross out, compared to an average of 19 during the previous reporting period.
- **Obstacles to movement in the West Bank** has remained at 614 same as during the previous reporting. Overall, the figure of 614 represents an increase of 238 obstacles (63.3%) over the baseline figure (376) of August 2005.
- *Convoys between the Gaza Strip and the West Bank:*
  - Truck convoys** Implementation now 42 months overdue (since mid-January 2006).
  - Bus convoys** Implementation now 43 months overdue (since mid-December 2005).
- *Ports:*
  - Seaport** Awaiting GoI assurance of non-interference with the seaport operation.
  - Airport** Awaiting commencement of discussions since November 2005.

**Non-AMA Crossings:**

- **Sufa** crossing was not open during the whole reporting period. It was last open on 12 Sept 08. In mid March 09, Israel announced that Sufa crossing is no longer a crossing point between Gaza and Israel.
- **Kerem Shalom** crossing was partially open on 11 days compared to 12 days during the previous reporting period. A total of 703 truckloads of goods, including 160 for humanitarian aid agencies, were allowed in, compared to 895 during the previous reporting period.
- **Nahal Oz fuel pipelines** were partially open on 08 out of the 10 scheduled days compared to 09 days during the previous reporting period. No petrol or diesel for private/commercial use was allowed entry during this reporting period. However, on 15 July, the ban on the import of diesel and petrol was

<sup>1</sup> The United Nations, through the OCHA oPt office, has assumed reporting responsibilities for reporting on the implementation of the AMA since April 2006.

<sup>2</sup> The AMA was negotiated by US Secretary of State Condoleezza Rice, between the Government of Israel and the Palestinian Authority to promote peaceful economic development and improve the humanitarian situation on the ground. It represents the commitments of both the Government of Israel and the Palestinian Authority to facilitate access and movement into/out and throughout the West Bank and Gaza Strip.



partially removed. 2,144 tonnes of cooking gas and 4,514,150 liters of industrial gas for the power plant were allowed in compared to 1,703 tonnes and 3,973,300 liters respectively in the previous reporting period.

- **Of note:** Overall, 915 truckloads, including 164 truckloads from humanitarian agencies were allowed entry to Gaza during this period, compared to 1,091 truckloads allowed in during the previous reporting period.

## A. General update on Gaza Crossing Points

1.a. Goods - Gaza Strip	Rafah (AMA) <sup>a</sup>		Erez (AMA) <sup>b</sup>		Karni (AMA) <sup>c</sup>		Kerem Shalom <sup>d</sup>		Sufa <sup>e</sup>		Total
	Primary; Closed since 12/06/08										
	Actual	% of Scheduled	Actual	% of Scheduled	Actual	% of Scheduled	Actual	% of Scheduled	Actual	% of Scheduled	
Days open in period	14.0	37.8%	12.0	100.0%	0.0	0.0%	11.0	91.7%	0.0	0.0%	37.0
Number of days experiencing closure	0.0	0.0%	0.0	0.0%	14.0	0.0%	1.0	8.3%	12.0	0.0%	27.0
Working hours (daily ave.)	0.0	-	0.0	0.0%	0.0	0.0%	7.3	100.0%	0.0	0.0%	7.3
Total working hours in period	0.0	-	0.0	0.0%	0.0	0.0%	88.0	100.0%	0.0	0.0%	88.0
Number of trucks out (daily ave.)	0.0	-	0.0	-	0.0	0.0%	0.0	-	0.0	-	0.0
Number of trucks in (daily ave.)	0.0	-	0.0	-	17.3	-	58.6	-	0.0	-	75.9
Security incidents on Palestinian side of the crossing	0.0	-	0.0	-	0.0	-	0.0	-	0.0	-	0.0

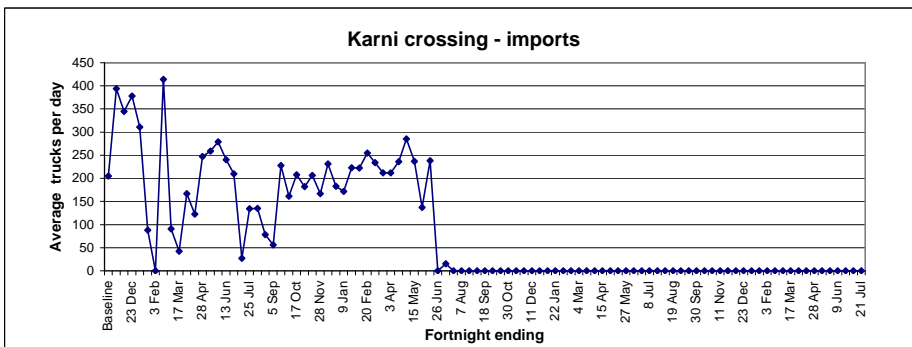
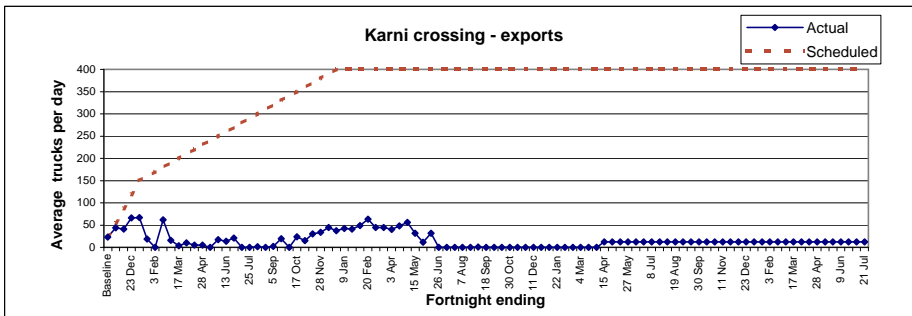
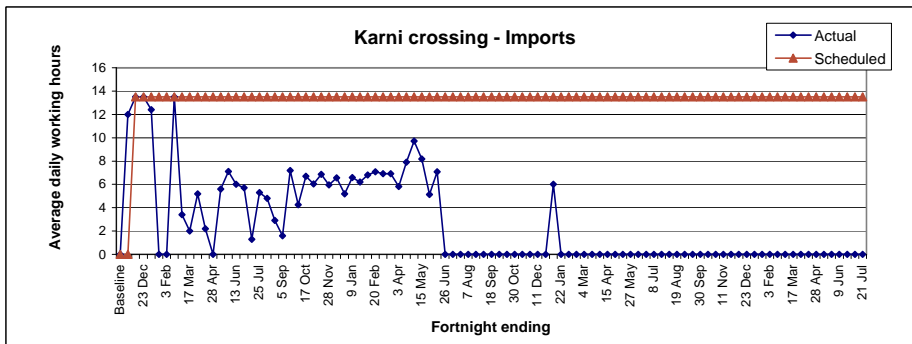
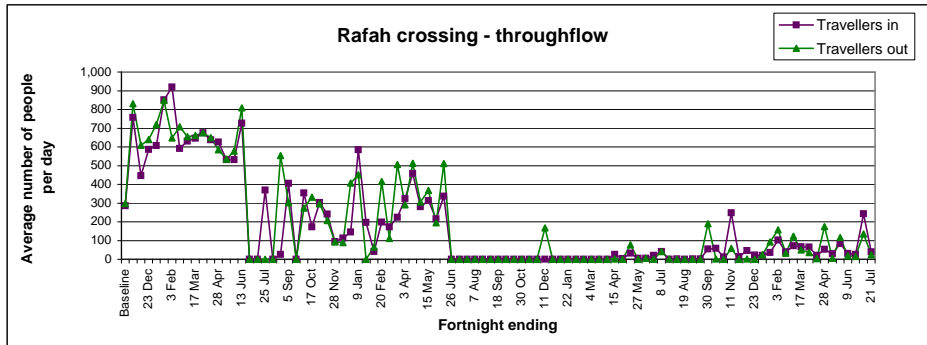
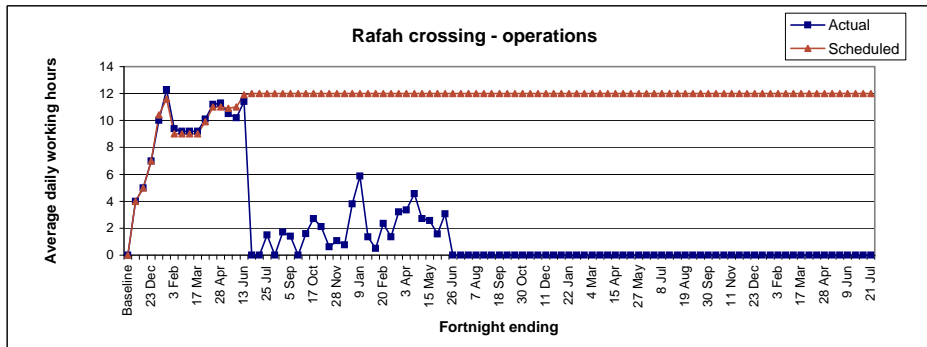
1.b. People - Gaza Strip	Rafah (AMA)		Erez (AMA)		Kerem Shalom		Total
	Primary; Closed since 09/06/08		Primary; Closed since 12/06/08				
	Actual	% of total	Actual	% of total	Actual	% of total	
Days open in period	14		12	100.0%	-	-	26
Number of days experiencing closure	0	100.0%	0	0.0%	-	-	0
Total working hours in period	168	0.0%	-	-	-	-	168
Working hours (daily ave.)	12	0.0%	-	-	-	-	12.0000
Travellers through crossing (daily ave.)	In	Out	Traders	Workers	-	-	
	39	24	0	0	-	-	

1.c. Fuel - Gaza Strip	Nahal Oz <sup>f</sup>	
	Actual	% of total
Days open in period	8.0	80.0%
Number of days experiencing closure	2.0	20.0%
Total working hours in period	-	-
Working hours (daily ave.)	-	-
Total number of litres in period	n.a	n.a
Number of litres (daily ave.)	n.a	n.a

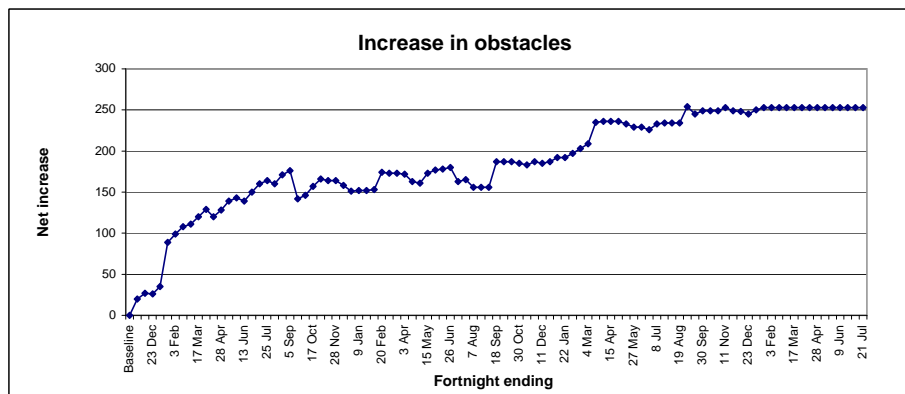
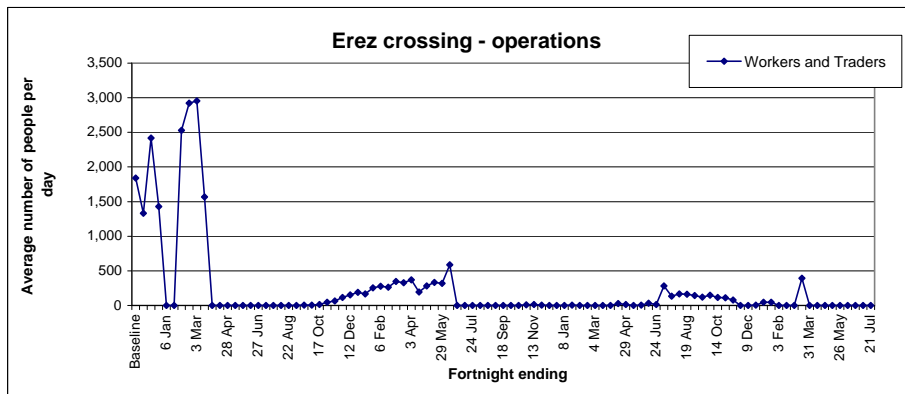
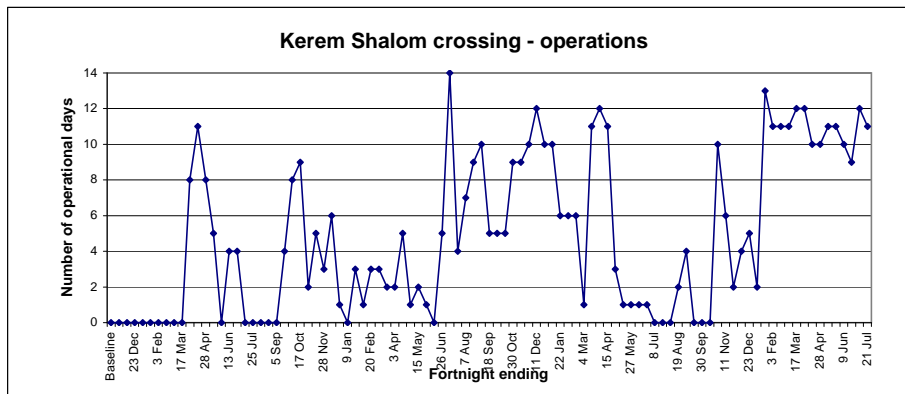
## Background

- Rafah crossing is Gaza's international terminal for passengers. It is scheduled to open 7 days per week, from 08:00 to 20:00 hours. Rafah has been closed since 10 June 2007.
- Erez crossing, the primary crossing point for workers, traders and humanitarian personnel, remains closed for all Palestinians as well as for Palestinian workers since 12 March 2006. A limited number of critical Palestinian humanitarian cases and senior traders have been permitted to cross subject to prior coordination with the IDF. Erez crossing is scheduled to open for Palestinians between 06:00 and 22:00 hours, seven days per week. On 12 October 2007, Israel announced that the crossing will close every week from 15:00 on Fridays until 07:00 on Sundays (6 days per week).
- Karni, the principal commercial crossing, is scheduled to operate six days per week. Since its closure on 12 June 2007, a single-lane conveyor belt transferring grain and animal feed operates on average two days per week. During the reporting period 208 truckloads of grain and animal feed were transferred to Gaza. Grain was transferred by a conveyor belt and not through an opening of the crossing itself.
- Kerem Shalom has traditionally not had any scheduled operating days and was opened periodically for humanitarian goods only. However, since mid-June 2007, Kerem Shalom was opened by Israel to allow for the entry and occasional exit of humanitarian and commercial goods. Since 28 October 2007, Kerem Shalom is scheduled to open on 5 days per week from 08:00 until 16:00 hours.
- Sufa crossing, which was for aggregates and now is being used for basic commercial and humanitarian supplies, is scheduled to operate five days per week (closed Fridays and Saturdays), between 08:30 and 15:00 hours. On 28 October 2007, Israel announced the closure of Sufa crossing. Israel reopened Sufa on 23 December 2007.
- Nahal Oz, the crossing point for fuel, is scheduled to open 6 days per week, from 08:00 to 15:00 hours.

B. Trends Analysis of Gaza Crossings



## Trends Analysis of Gaza Crossings - Continued



## C. Update on the implementation of additional benchmarks of the AMA

1. Karni (scheduled hours: Sunday-Friday, 08:00-20:00) - CLOSED SINCE 12 JUNE 2007		
	Actual	% of scheduled
Utilization ratio <sup>a</sup>	n.a	n.a
Number of Agricultural trucks out (daily ave.)	0	400
Number of Non-Agricultural trucks out (daily ave.)	0	0.0

a: Ratio of actual vs. planned working hours of scanners and cells.

2. General Management and Operations (West Bank and Gaza Strip)				
2.a Management and Operations - Gaza Strip			YES/NO	
PA established clear operating procedures			YES	
Israel provided PA with population registry data			Incomplete	
Liaison office established			YES	
PA established baggage limits			YES	
PA provided the 3rd party the list of names of workers at Rafah			YES	
Security working group established			YES	
PA customs officials clearing incoming cargo at Kerem Shalom			NO	
Kerem Shalom operating procedures being discussed			NO	
New and additional scanner installed at Karni by 31 December 2005			NO	
Common management system adopted by both parties			Incomplete	
New generation of x-ray equipment installed and used			Incomplete	
Passages protected on the Palestinian side of the border			Incomplete	
Training program in place			Incomplete	
Security equipment installed			Incomplete	
PA established a unified system of border management			Incomplete	
Management system developed for Karni applied to Erez and Kerem Shalom			NO	
2.b Management and Operations - West Bank		Tarkumiya	Jalame	Sha'ar Ephraim
Israel put in place similar arrangements to make West Bank passages fully operational <sup>a</sup>		NO	NO	NO
Operational procedures developed for those passages		YES	YES	YES

a: New infrastructure has been put in place since the AMA was reached, however the current capacity (approximately 8 trucks/hour) does not meet AMA requirements for a capacity equivalent to Karni.

3. Gaza Strip Seaport (destroyed in 2001 by the IDF during construction)		YES/NO
GoI assured donors that it will not interfere with operation of seaport / letter sent		NO
Tripartite committee to develop security and other arrangements for the port established		NO

4. Gaza Strip Airport (closed by Israel in Feb 2001 and destroyed in Dec 2001; renovated and vandalized in July 2007)		YES/NO
Discussions continuing on security, construction and operations issues		NO

**5. Link Between Gaza and the West Bank**

<b>Convoys</b>		<b>YES/NO</b>
Bus convoys established by December 15 2005		NO
Truck convoys established by January 15 2006		NO
Detailed implementation arrangements worked out		NO
<i>Buses (both directions - ave. in period)</i>	0	
Number of convoys per day	0	
Number of people per day	0	
<i>Trucks (both directions - ave. in period)</i>	0	
Number of convoys per day	0	
Number of trucks per day	0	

**6. Movement Within the West Bank**

<b>Obstacle reduction</b>				<b>YES/NO</b>
Work ongoing to establish a plan to reduce obstacles				NO
Plan to reduce obstacles completed by 31 December 2005				NO
	Current count	Baseline (1 Aug 05) <sup>d</sup>	% increase over baseline	
Number of identified obstacles <sup>c</sup>	<b>614</b>	376	63.3%	
<i>of which manned</i>	91	59	54.2%	
<i>of which unmanned</i>	523	317	65.0%	
			-	
Breakdown, by type of obstacle	Current count	Previous period count	Changes	
<i>Checkpoints</i>	68	68	0	
<i>Partial Checkpoints</i>	23	23	0	
<i>Earthmounds</i>	203	203	0	
<i>Road Gates</i>	105	105	0	
<i>Roadblocks</i>	69	69	0	
<i>Earthwalls</i>	50	50	0	
<i>Trenches</i>	21	21	0	
<i>Roadbarriers</i>	75	75	0	

c: Since 15 September 2007, OCHA does not count checkpoints on the Green Line in the total closure number. The figures reported here are based on field observations updating a quarterly comprehensive field survey count.

d: This first figure was agreed upon by OCHA and the IDF in August 2005 and is used as the baseline for the AMA.