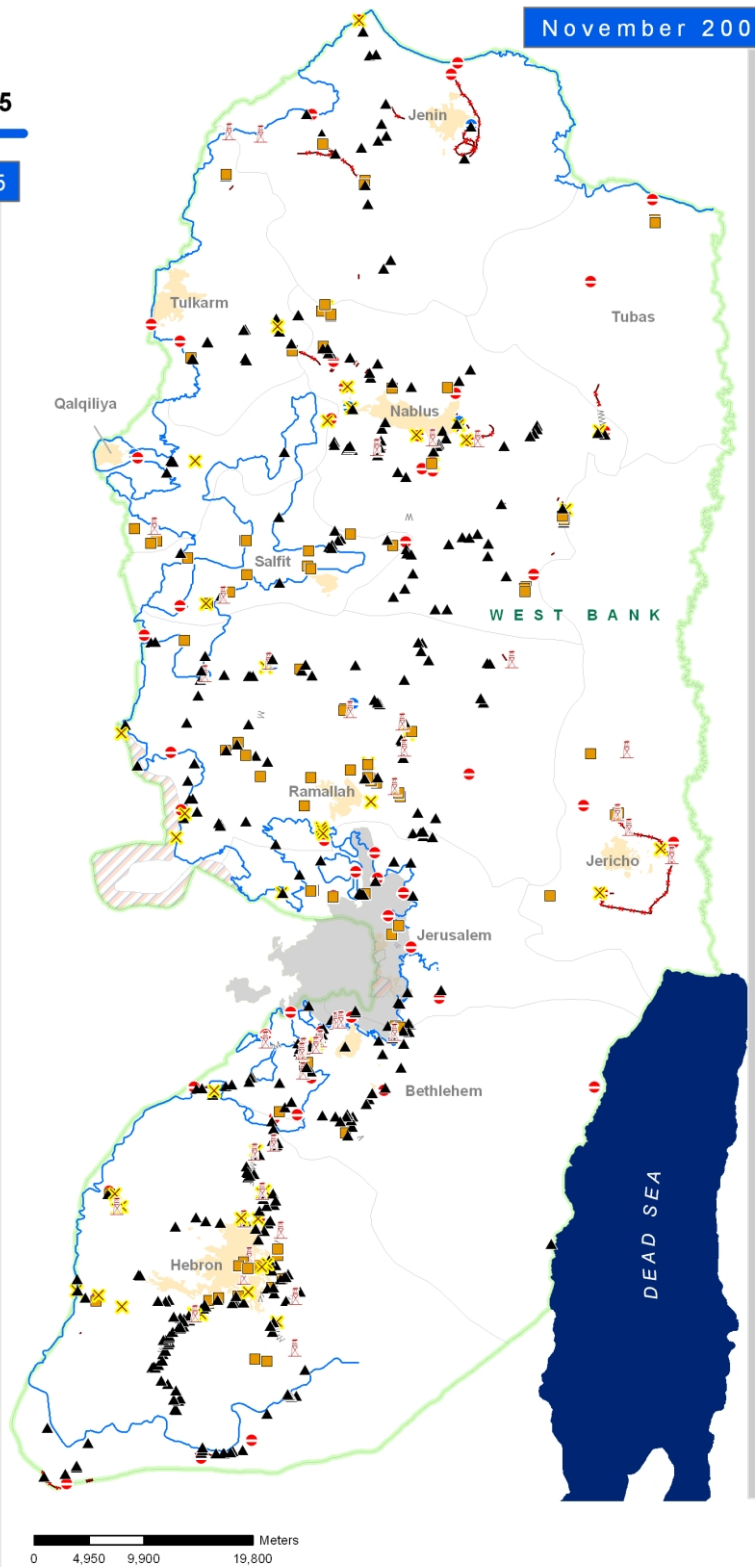
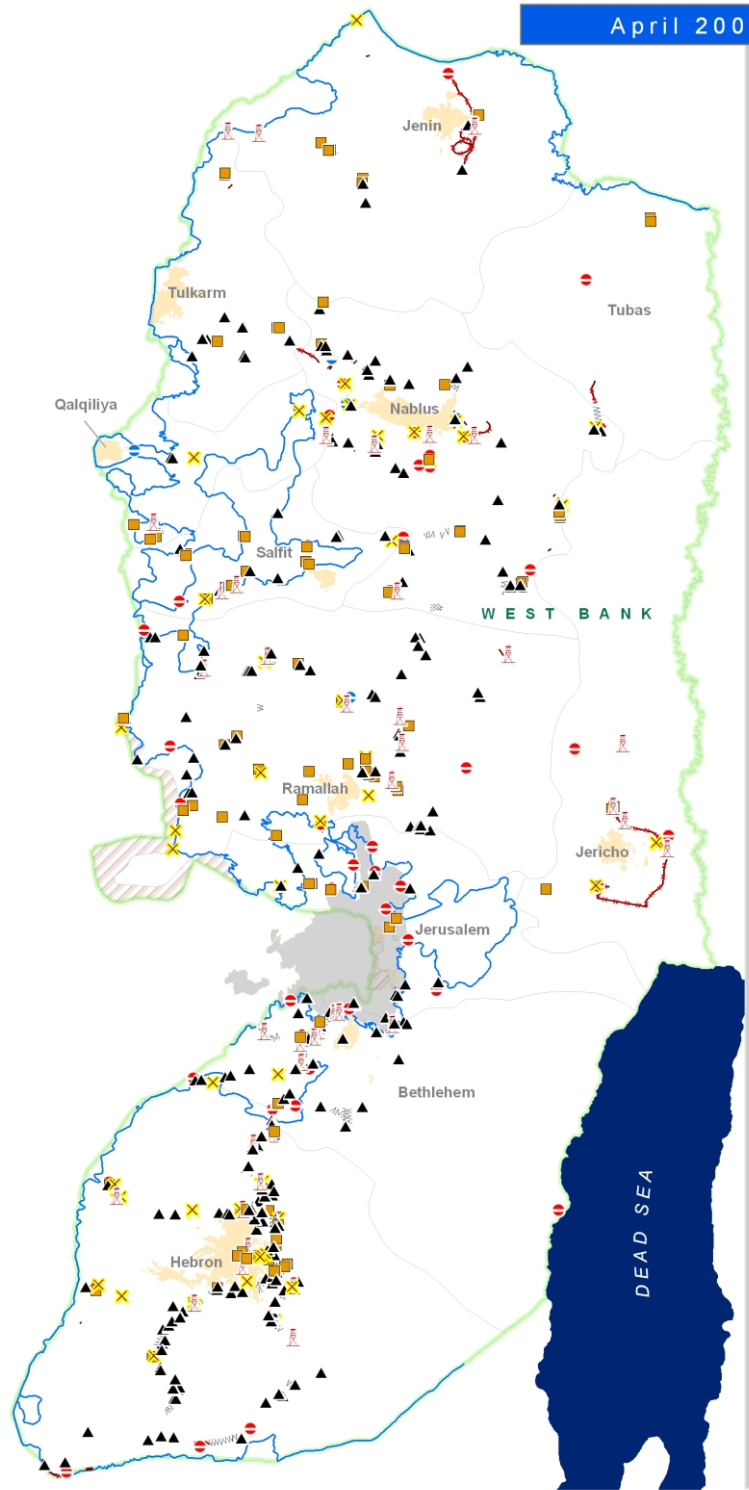




West Bank Closures

Comparison between November 2004 - April 2005

April 2005



Closure Summary Statistics: April 2005 and November 2004

Governorate	Checkpoint	Partial Checkpoint	Roadblock	Road Gate	Earth Mound	Earth Wall	Trench	Total	Difference								
Jenin	4	1	11	6	1	6	19	30	42	-12							
Tulkarm	2	0	5	4	0	13	16	23	26	-3							
Nablus	8	3	18	13	8	47	61	117	120	-3							
Tubas	2	0	2	2	0	0	0	6	6	0							
Salfit	2	0	18	12	2	9	13	3	31	3							
Qalqiliya	2	1	3	3	2	2	5	0	11	13	-2						
Jerusalem	8	0	6	9	1	28	29	43	47	-4							
Jericho	3	0	4	5	3	1	1	14	15	-1							
Ramallah	6	2	22	19	9	49	55	1	93	96	-3						
Bethlehem	9	0	5	8	2	27	55	4	53	87	-34						
Hebron	11	0	24	21	22	100	120	17	181	197	-16						
Total	57	61	7	6	118	102	51	48	282	374	35	28	55	61	605	680	-75

Bold numbers are April 2005 figures. Non-bold numbers are November 2004 figures. Italic numbers are totals.

- Checkpoint
- Partial Checkpoint
- Earth Mound
- Roadblock
- Road Gate
- Observation Tower
- Earth Wall
- Trench
- West Bank Barrier - as of 20 February 2005

Closure mapping is a work in progress. Data is collected by OCHA field staff and is subject to change. Cartography: OCHA-oPt - April 2005. Base data: PA Map/PC, July 2000, OCHA update, 2005. For comments contact: sochapt@un.org or Tel: +972 (02) 582 9992. <http://www.ochaopt.org>