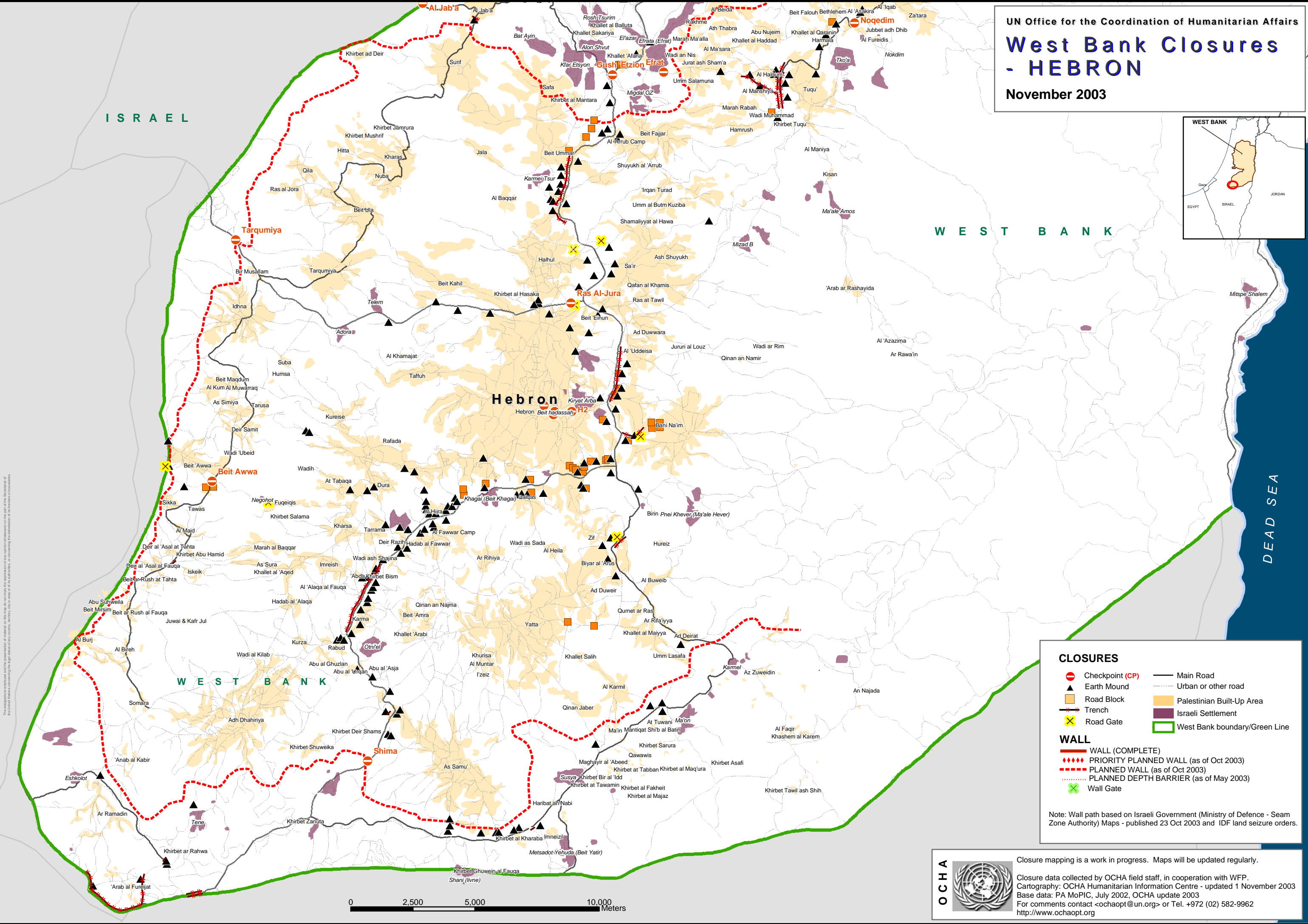


UN Office for the Coordination of Humanitarian Affairs
West Bank Closures - HEBRON
 November 2003



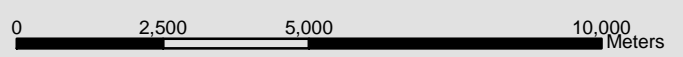
CLOSURES

- Checkpoint (CP)
- Earth Mound
- Road Block
- Trench
- Road Gate
- Main Road
- Urban or other road
- Palestinian Built-Up Area
- Israeli Settlement
- West Bank boundary/Green Line

WALL

- WALL (COMPLETE)
- PRIORITY PLANNED WALL (as of Oct 2003)
- PLANNED WALL (as of Oct 2003)
- PLANNED DEPTH BARRIER (as of May 2003)
- Wall Gate

Note: Wall path based on Israeli Government (Ministry of Defence - Seam Zone Authority) Maps - published 23 Oct 2003 and IDF land seizure orders.



OCHA Closure mapping is a work in progress. Maps will be updated regularly.

Closure data collected by OCHA field staff, in cooperation with WFP.
 Cartography: OCHA Humanitarian Information Centre - updated 1 November 2003
 Base data: PA MoPIC, July 2002, OCHA update 2003
 For comments contact <ochaopt@un.org> or Tel. +972 (02) 582-9962
<http://www.ochaopt.org>

The information contained in this map is the property of the United Nations Office for the Coordination of Humanitarian Affairs (OCHA) and is provided for informational purposes only. OCHA is not responsible for any errors or omissions, or for any consequences arising from the use of the information contained in this map.