

West Bank: Access and Closure

January 2006

Mediterranean Sea

PHYSICAL CLOSURES

- Checkpoint
- Partial Checkpoint
- Agricultural Gate
- Road Gate
- Observation Tower
- Earthmound
- Roadblock
- Tunnel
- Planned Tunnel
- Earth Wall
- Road Barrier
- Trench

Thirty-Eight Barrier gates are open to Palestinians with appropriate permits.

West Bank Barrier

- Constructed
- Under Construction
- Planned Route

Planned Barrier - path based on Israeli Government map, published 20 February 2005 and IDF land seizure orders (Ministry of Defence - Seam Zone Authority)

Constructed Barrier - path extracted from satellite imagery and verified with field surveys as of January 2006

ACCESS

Closed and Restricted Areas

- Israeli military base
- Israeli closed military area
- Existing and projected 'closed areas' behind the Barrier

Israeli Settlements

- Settlement
- Evacuated Settlement
- Outpost
- Settlement Municipal Area

Palestinian Areas

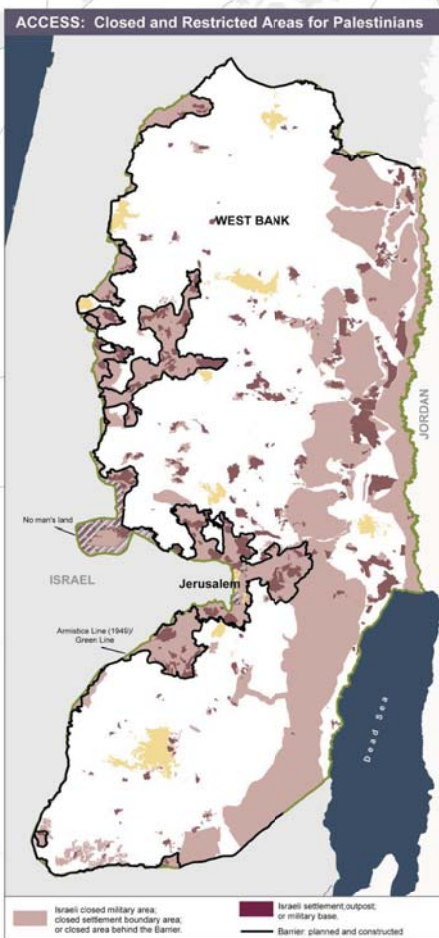
- Builtup

Roads

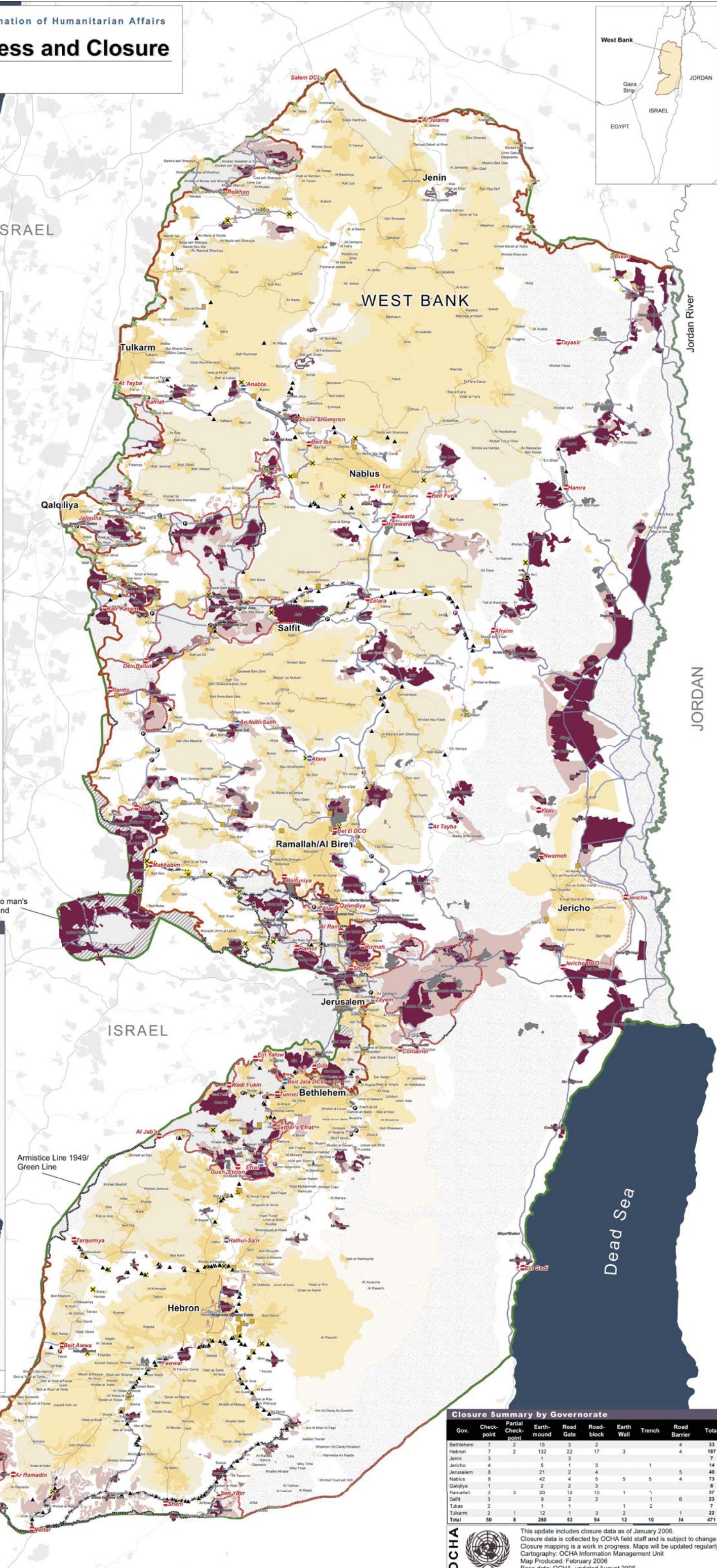
- Prohibited or Restricted Palestinian vehicle use
- Regional or Main
- Other Road

Oslo Agreement

- Full Palestinian civil and military control (Effective in Jericho only.)
- Full Palestinian civil control and joint Israeli-Palestinian military control
- Hebron Agreement
- Full Israeli civil and military control



The designations employed and the presentation of material on this map do not imply the expression of any opinion whatsoever on the part of the Secretariat of the United Nations concerning the legal status of any country, territory, city or area or of its authorities, or concerning the delimitation of its frontiers or boundaries.



The West Bank Barrier:

A complex series of concrete walls, electronic fences, observation towers, trenches, patrol roads and razor wire, used to control Palestinian pedestrian and vehicular movement.



BARRIER GATE - Allows restricted movement through the West Bank Barrier to Palestinian lands and to Israel. Permits are required for Palestinians to pass through a gate.

Closure:

A policy of physical barriers and permit requirements used to control Palestinian pedestrian and vehicular movement.



CHECKPOINT - A barrier manned by IDF and/or Border Police with observation towers and other physical blocks used to control pedestrian and vehicular access.

PARTIAL CHECKPOINT - An established checkpoint operating periodically.



OBSERVATION TOWER - An elevated military tower to monitor/control Palestinian pedestrian and vehicular access.



EARTH MOUND - A mound of rubble, dirt and/or rocks used to obstruct vehicle access.



TUNNEL - Passage under road restricted for Palestinian use.



ROADBLOCK - A series of 1 metre concrete blocks used to obstruct vehicle access.



TRENCH - A ditch used to prevent vehicle crossing.



ROAD GATE - A metal gate, often manned by IDF, used to control movement along roads.



ROAD BARRIER - Secures the passage of Israeli settlers on restricted roads. These Barriers impede Palestinians from traveling over: major roads leading to the main cities.



The permit system is complex and applied differently from region to region. A permit allows travel and reduces the risk of being turned back at a checkpoint. Permits are necessary for crossing specific checkpoints, accessing the Jordan Valley, the 'closed area' between the Green Line and the Barrier and for entering East Jerusalem.

Closure Summary by Governorate

Gov.	Check-point	Partial Check-point	Earth-mound	Road Gate	Road-block	Earth Wall	Trench	Road Barrier	Total
Bethlehem	7	2	15	3	2			4	33
Hebron	7	2	132	22	17	3		4	187
Jenin	3		1	3					7
Jericho	4		5	1	3		1		14
Jerusalem	21		2	4				5	40
Nablus	8		42	2	4	5	5	4	73
Qalqilya	1		2	2	3				8
Ramallah	3	3	20	12	15	1			57
Salfit	3		9	2	2			6	23
Tulkarm	2		1	1	1			1	7
Tulkarm	2	1	12	1	3	2		2	22
Total	60	8	260	53	54	12	10	14	471



This update includes closure data as of January 2006. Closure data is collected by OCHA field staff and is subject to change. Closure mapping is a work in progress. Maps will be updated regularly. Cartography: OCHA Information Management Unit. Map Produced: February 2006. Base data: OCHA, updated August 2005.