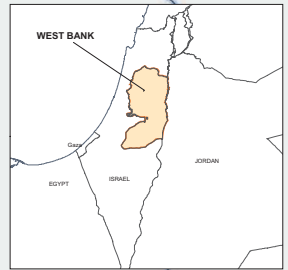
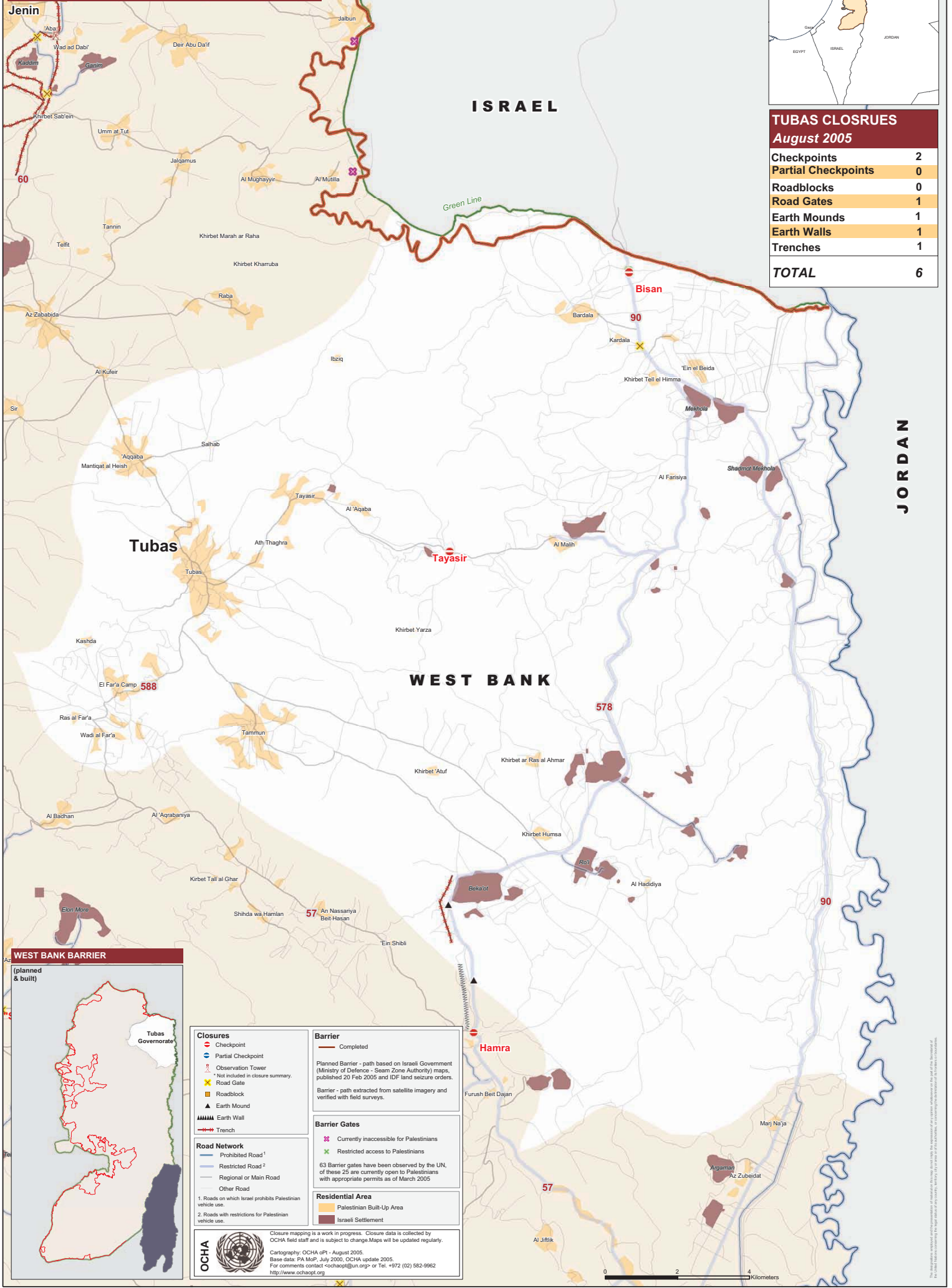


West Bank Closures - Tubas

August 2005



| TUBAS CLOSURES | |
|---------------------|----------|
| August 2005 | |
| Checkpoints | 2 |
| Partial Checkpoints | 0 |
| Roadblocks | 0 |
| Road Gates | 1 |
| Earth Mounds | 1 |
| Earth Walls | 1 |
| Trenches | 1 |
| TOTAL | 6 |



WEST BANK BARRIER

(planned & built)

Tubas Governorate

Closures

- Checkpoint
- Partial Checkpoint
- Observation Tower
- Road Gate
- Roadblock
- Earth Mound
- Earth Wall
- Trench

Road Network

- Prohibited Road¹
- Restricted Road²
- Regional or Main Road
- Other Road

1. Roads on which Israel prohibits Palestinian vehicle use.
2. Roads with restrictions for Palestinian vehicle use.

Barrier

- Completed
- Planned Barrier - path based on Israeli Government (Ministry of Defence - Seam Zone Authority) maps, published 20 Feb 2005 and IDF land seizure orders.
- Barrier - path extracted from satellite imagery and verified with field surveys.

Barrier Gates

- Currently inaccessible for Palestinians
- Restricted access to Palestinians

63 Barrier gates have been observed by the UN. Of these 25 are currently open to Palestinians with appropriate permits as of March 2005.

Residential Area

- Palestinian Built-Up Area
- Israeli Settlement

OCHA

Closure mapping is a work in progress. Closure data is collected by OCHA field staff and is subject to change. Maps will be updated regularly.

Cartography: OCHA oPt - August 2005.
Base data: PA Map, July 2000; OCHA update 2005.
For comments contact: ochaopt@un.org or Tel. +972 (02) 582-9982
<http://www.ochaopt.org>

The information contained in this document is for reference only. It is not intended to be used as a basis for legal action or as a substitute for legal advice. The United Nations is not responsible for any errors or omissions in this document, or for any consequences arising from its use.