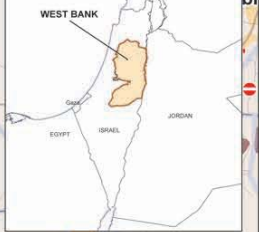
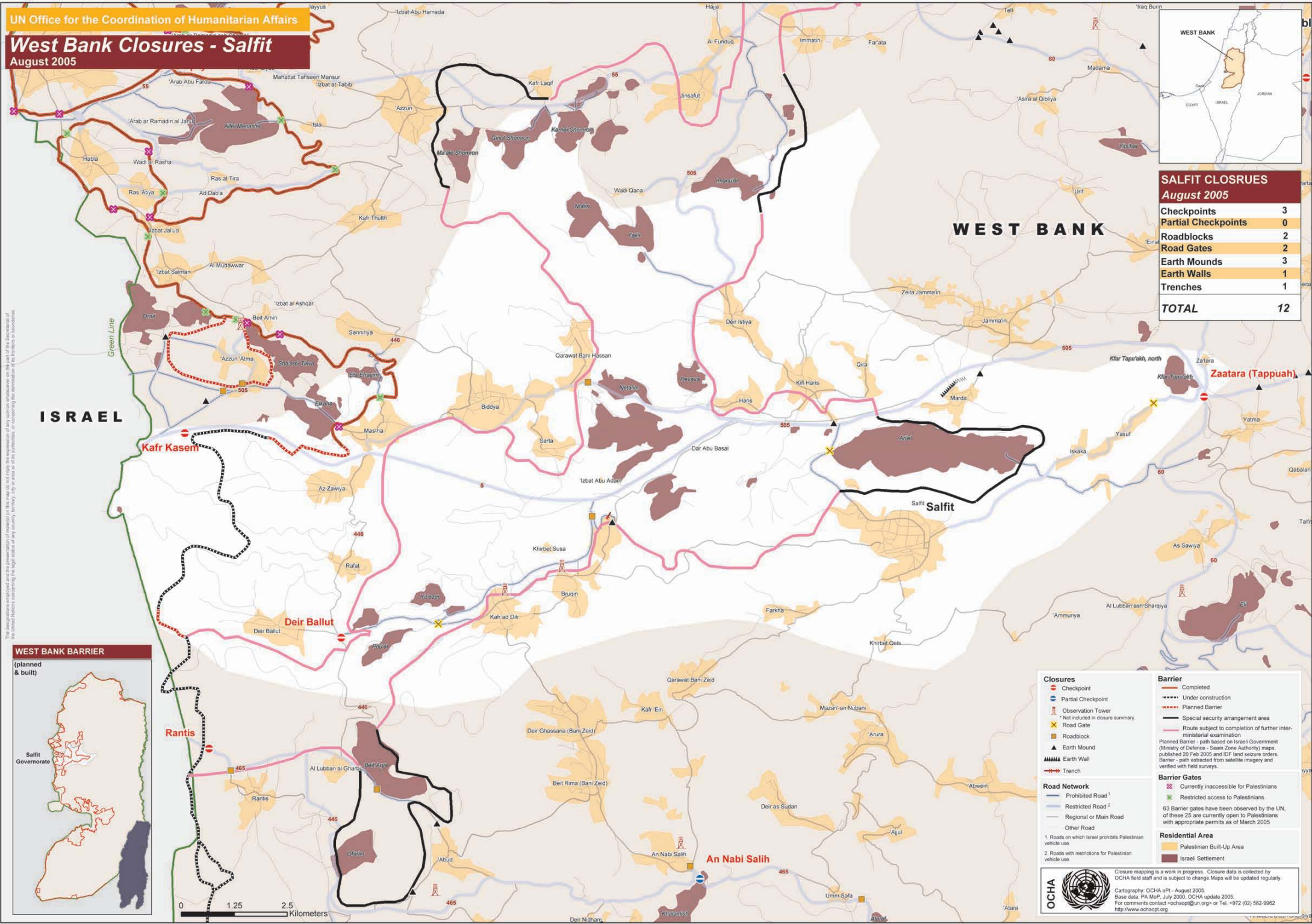


West Bank Closures - Salfit

August 2005



SALFIT CLOSURES	
August 2005	
Checkpoints	3
Partial Checkpoints	0
Roadblocks	2
Road Gates	2
Earth Mounds	3
Earth Walls	1
Trenches	1
TOTAL	12



The designations employed and the presentation of material on this map do not imply the expression of any opinion whatsoever on the part of the Secretariat of the United Nations concerning the legal status of any country, territory, city or area or of its authorities, or concerning the delimitation of its frontiers or boundaries.



Closures

- Checkpoint
- Partial Checkpoint
- Observation Tower
- Road Gate
- Roadblock
- Earth Mound
- Earth Wall
- Trench

Barrier

- Completed
- Under construction
- Planned Barrier
- Special security arrangement area
- Route subject to completion of further inter-ministerial examination

Planned Barrier - path based on Israeli Government (Ministry of Defence - Seam Zone Authority) maps, published 20 Feb 2005 and IDF land seizure orders.
Barrier - path extracted from satellite imagery and verified with field surveys.

Barrier Gates

- Currently inaccessible for Palestinians
- Restricted access to Palestinians

63 Barrier gates have been observed by the UN, of these 25 are currently open to Palestinians with appropriate permits as of March 2005.

Residential Area

- Palestinian Built-Up Area
- Israeli Settlement

Road Network

- Prohibited Road 1
- Restricted Road 2
- Regional or Main Road
- Other Road

1. Roads on which Israel prohibits Palestinian vehicle use.
 2. Roads with restrictions for Palestinian vehicle use.

