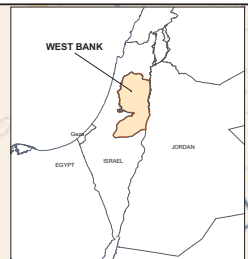
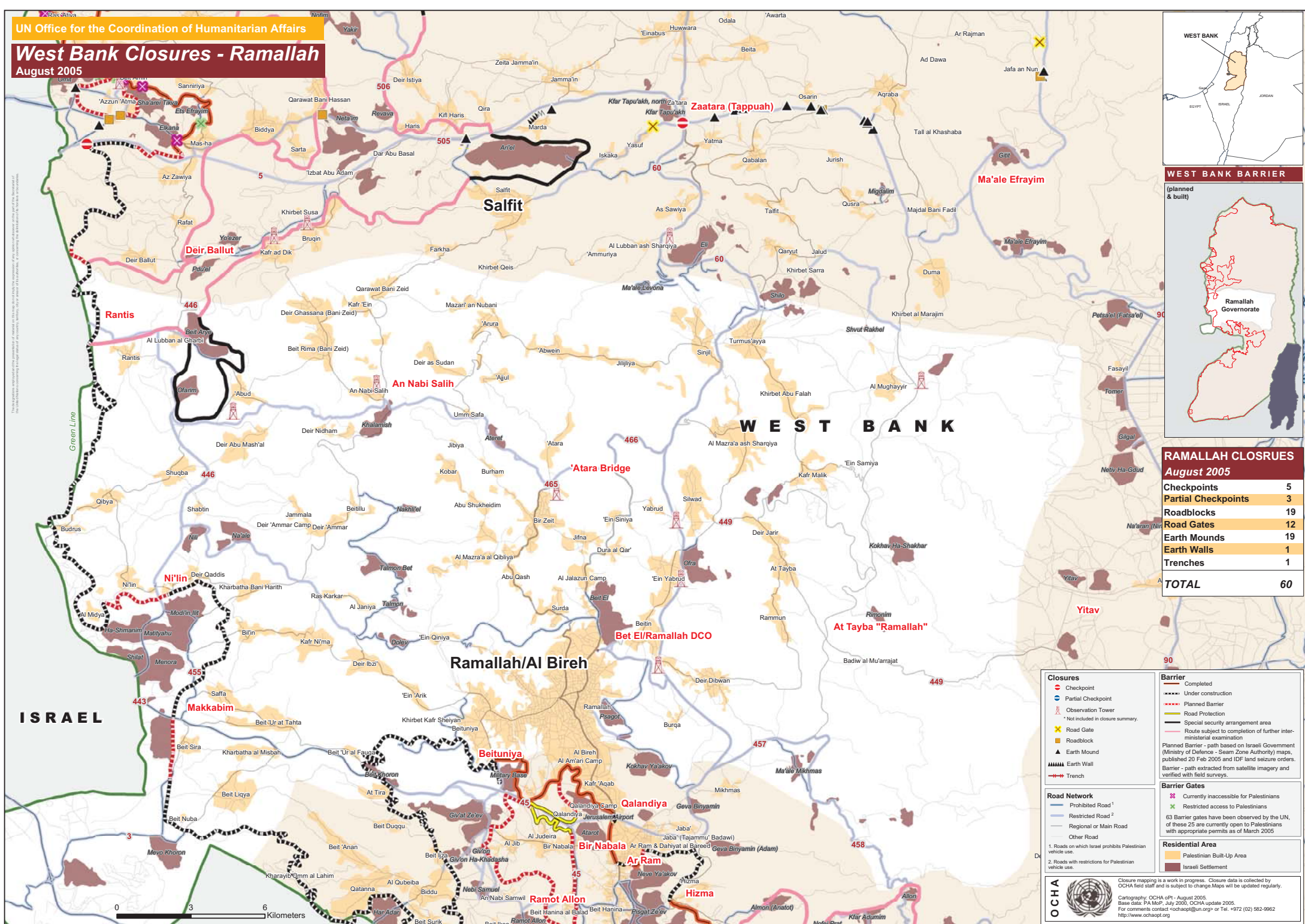


West Bank Closures - Ramallah

August 2005

This graphic represents the current situation of the West Bank as of August 2005. It is based on the most recent information available to the UN Office for the Coordination of Humanitarian Affairs. It is not intended to be a political statement. The UN Office for the Coordination of Humanitarian Affairs is not responsible for the content of this graphic.



WEST BANK BARRIER



RAMALLAH CLOSURES August 2005

Checkpoints	5
Partial Checkpoints	3
Roadblocks	19
Road Gates	12
Earth Mounds	19
Earth Walls	1
Trenches	1
TOTAL	60

Closures

- Checkpoint
- Partial Checkpoint
- Observation Tower
- Road Gate
- Earth Mound
- Earth Wall
- Trench

Barrier

- Completed
- Under construction
- Planned Barrier
- Road Protection
- Special security arrangement area
- Route subject to completion of further inter-ministerial examination

Planned Barrier - path based on Israeli Government (Ministry of Defence - Seam Zone Authority) maps, published 20 Feb 2005 and IDF land seizure orders. Barrier - path extracted from satellite imagery and verified with field surveys.

Road Network

- Prohibited Road 1
- Restricted Road 2
- Regional or Main Road
- Other Road

1. Roads on which Israel prohibits Palestinian vehicle use.
2. Roads with restrictions for Palestinian vehicle use.

Barrier Gates

- Currently inaccessible to Palestinians
- Restricted access to Palestinians

63 Barrier gates have been observed by the UN, of these 25 are currently open to Palestinians with appropriate permits as of March 2005

Residential Area

- Palestinian Built-Up Area
- Israeli Settlement

OCHA

Closure mapping is a work in progress. Closure data is collected by OCHA field staff and is subject to change. Maps will be updated regularly.
Cartography: OCHA OPI - August 2005.
Base data: PA MoP - July 2005; OCHA update 2005.
For comments contact <ochapgl@un.org> or Tel. +972 (02) 582-9962
http://www.ochaopt.org

