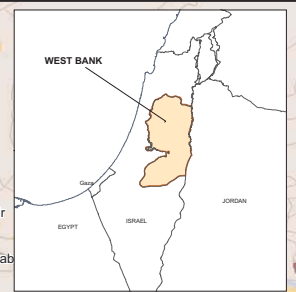
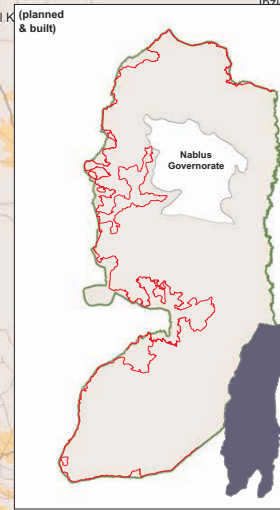


# West Bank Closures - Nablus

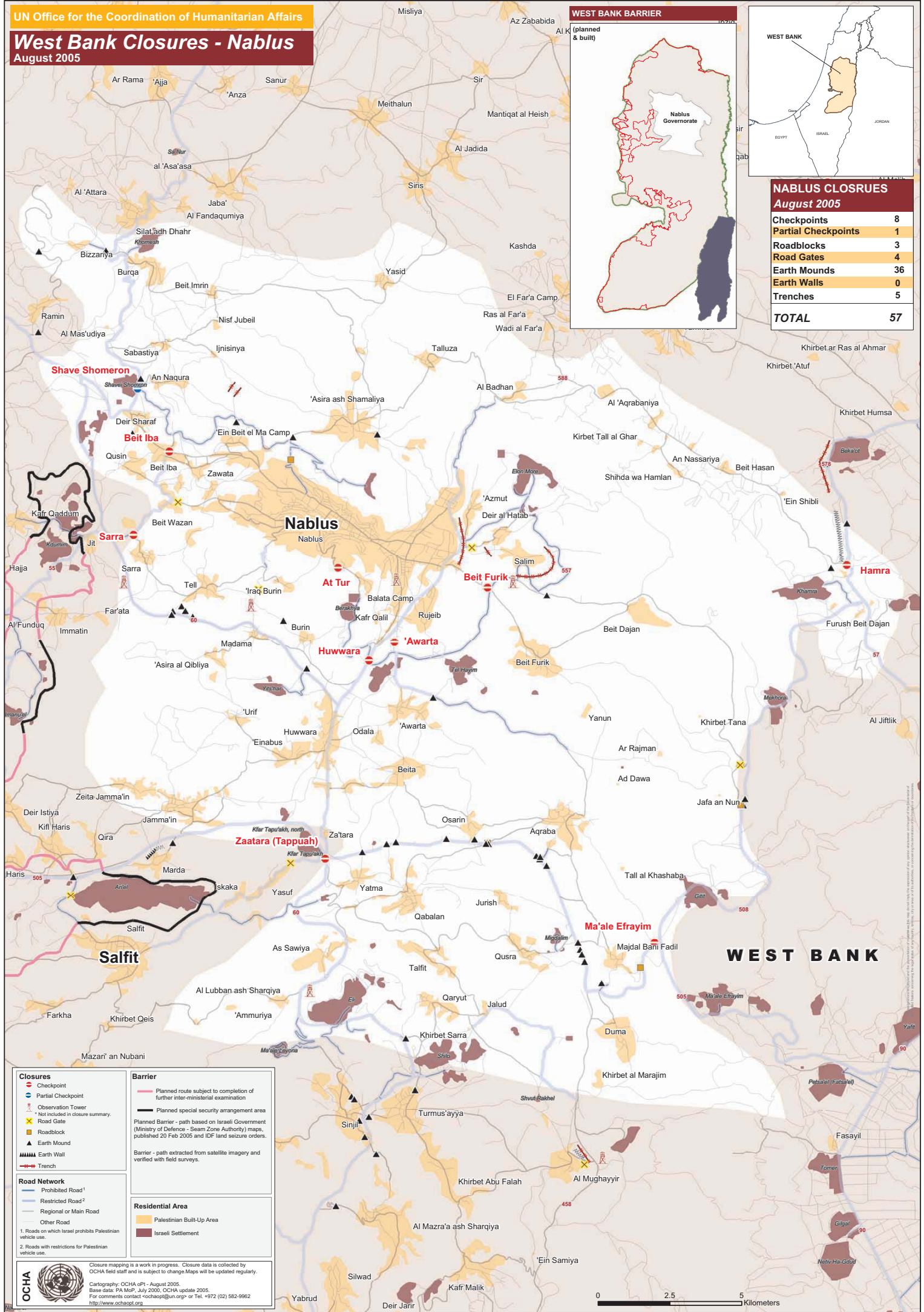
August 2005

## WEST BANK BARRIER



### NABLUS CLOSURES August 2005

Checkpoints	8
Partial Checkpoints	1
Roadblocks	3
Road Gates	4
Earth Mounds	36
Earth Walls	0
Trenches	5
<b>TOTAL</b>	<b>57</b>



**Closures**

- Checkpoint
- Partial Checkpoint
- Observation Tower
- Road Gate
- Roadblock
- Earth Mound
- Earth Wall
- Trench

**Barrier**

- Planned route subject to completion of further inter-ministerial examination
- Planned special security arrangement area
- Planned Barrier - path based on Israeli Government (Ministry of Defence - Seam Zone Authority) maps, published 20 Feb 2005 and IDF land seizure orders.
- Barrier - path extracted from satellite imagery and verified with field surveys.

**Road Network**

- Prohibited Road<sup>1</sup>
- Restricted Road<sup>2</sup>
- Regional or Main Road
- Other Road

**Residential Area**

- Palestinian Built-Up Area
- Israeli Settlement

1. Roads on which Israel prohibits Palestinian vehicle use.  
2. Roads with restrictions for Palestinian vehicle use.

