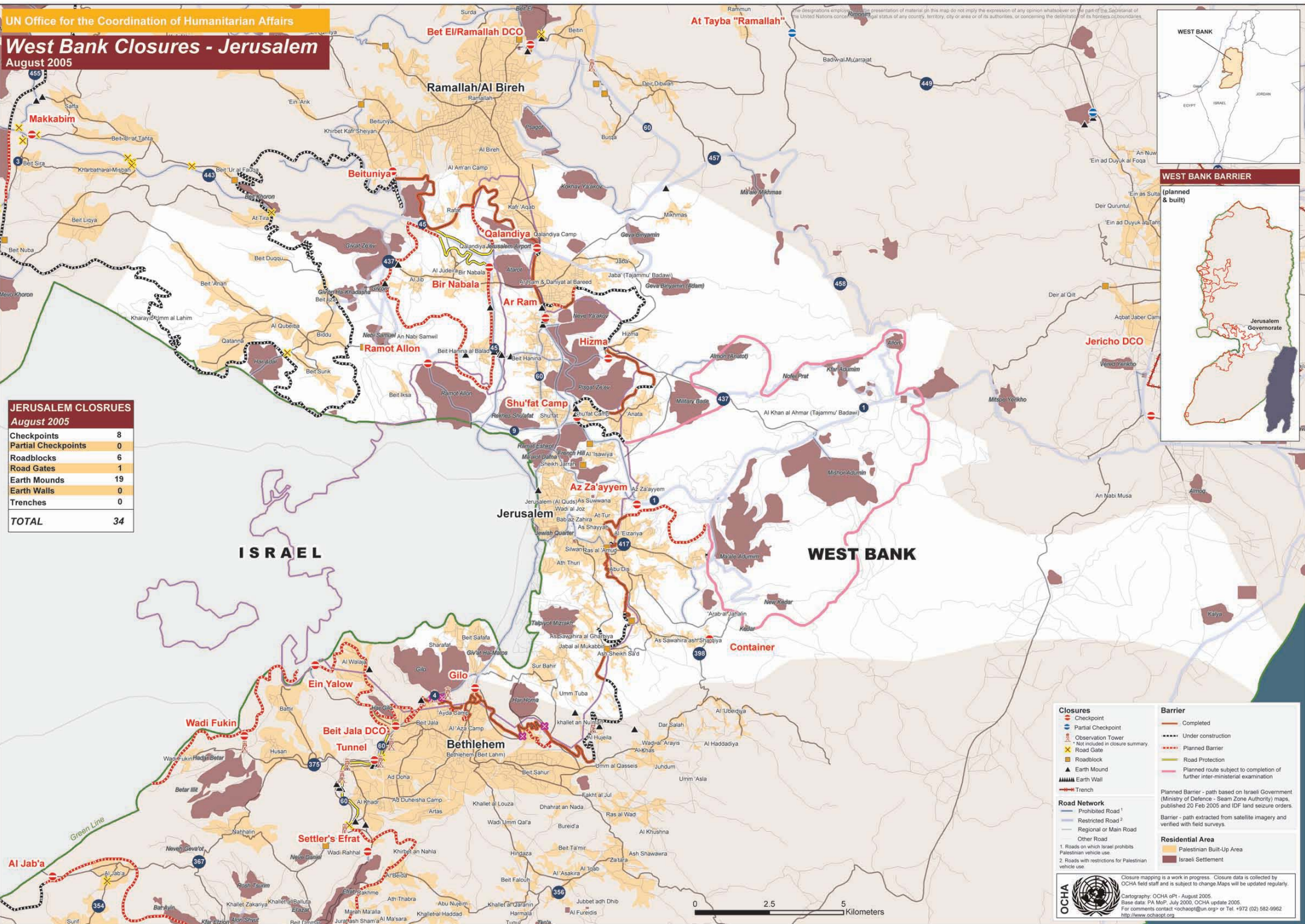


West Bank Closures - Jerusalem

August 2005

JERUSALEM CLOSURES
August 2005

Checkpoints	8
Partial Checkpoints	0
Roadblocks	6
Road Gates	1
Earth Mounds	19
Earth Walls	0
Trenches	0
TOTAL	34



WEST BANK BARRIER



Closures

- Checkpoint
- Partial Checkpoint
- Observation Tower
- Road Gate
- Roadblock
- Earth Mound
- Trench

Barrier

- Completed
- Under construction
- Planned Barrier
- Road Protection
- Planned route subject to completion of further inter-ministerial examination

Road Network

- Prohibited Road¹
- Restricted Road²
- Regional or Main Road
- Other Road

Residential Area

- Palestinian Built-Up Area
- Israeli Settlement

1. Roads on which Israel prohibits Palestinian vehicle use.
2. Roads with restrictions for Palestinian vehicle use.