

# West Bank Closures - Jericho

August 2005



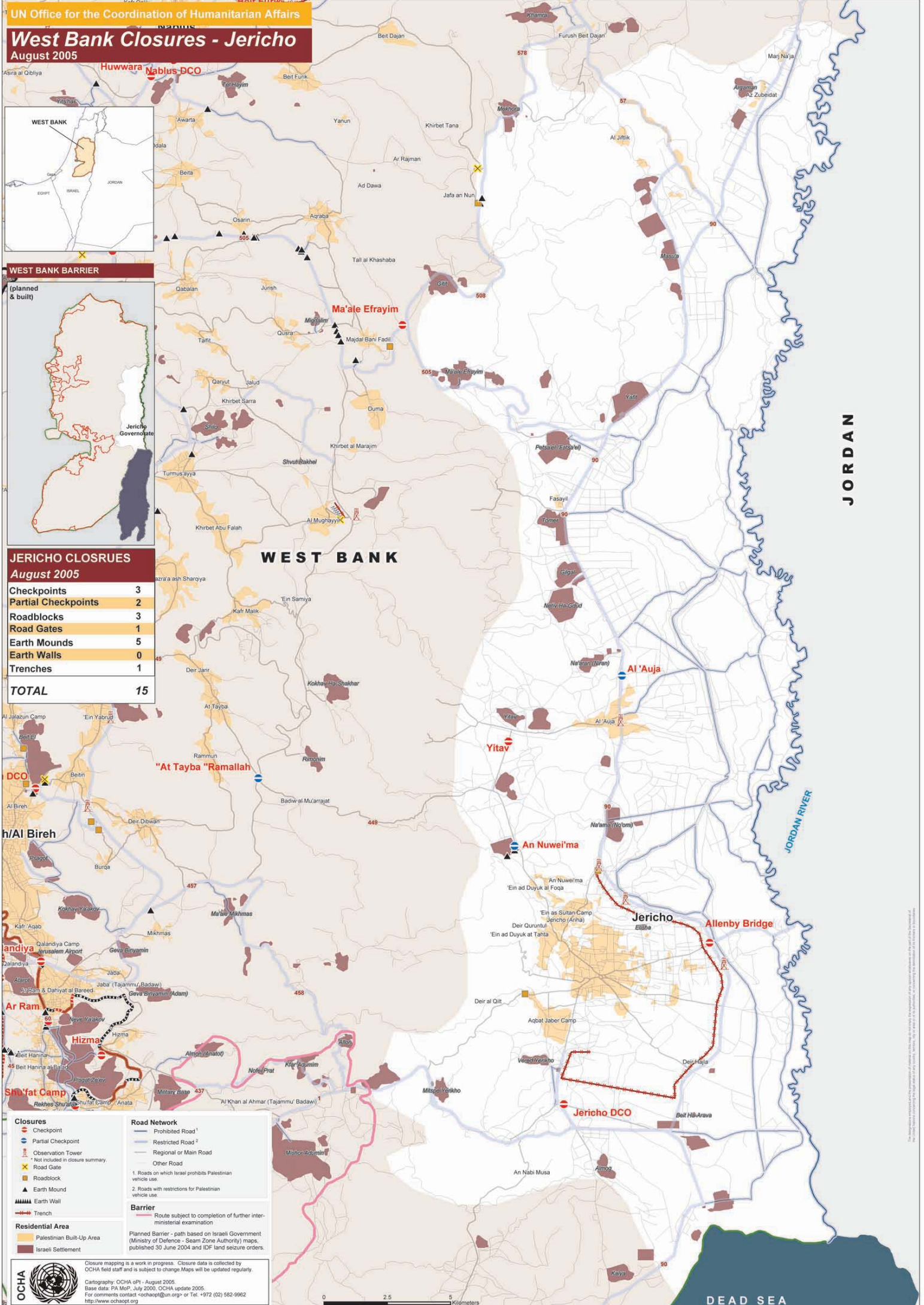
## WEST BANK BARRIER



## JERICHO CLOSURES

August 2005

Checkpoints	3
Partial Checkpoints	2
Roadblocks	3
Road Gates	1
Earth Mounds	5
Earth Walls	0
Trenches	1
<b>TOTAL</b>	<b>15</b>



**Closures**

- Checkpoint
- Partial Checkpoint
- Observation Tower
- Road Gate
- Roadblock
- Earth Mound
- Earth Wall
- Trench

**Road Network**

- Prohibited Road 1
- Restricted Road 2
- Regional or Main Road
- Other Road

**Barrier**

- Planned Barrier - path based on Israeli Government (Ministry of Defence - Seam Zone Authority) maps, published 30 June 2004 and IDF land seizure orders.

**Residential Area**

- Palestinian Built-Up Area
- Israeli Settlement

Closure mapping is a work in progress. Closure data is collected by OCHA field staff and is subject to change. Maps will be updated regularly.  
 Cartography: OCHA oPI - August 2005.  
 Base data: PIA MoF, July 2000, OCHA update 2000.  
 For comments contact: ochaopt@un.org or Tel: +972 (02) 582-9962  
 http://www.ochaopt.org



JORDAN

JORDAN RIVER

DEAD SEA

This document is copyrighted by the United Nations Office for the Coordination of Humanitarian Affairs. All rights reserved. No part of this document may be reproduced, stored in a retrieval system, or transmitted, in any form or by any means, electronic, mechanical, photocopying, recording, or by any information storage or retrieval system, without the prior written permission of the United Nations Office for the Coordination of Humanitarian Affairs.