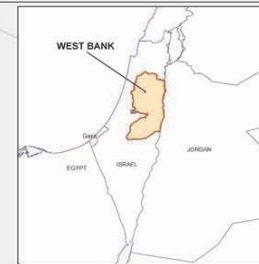
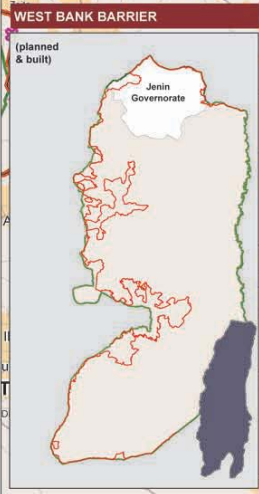
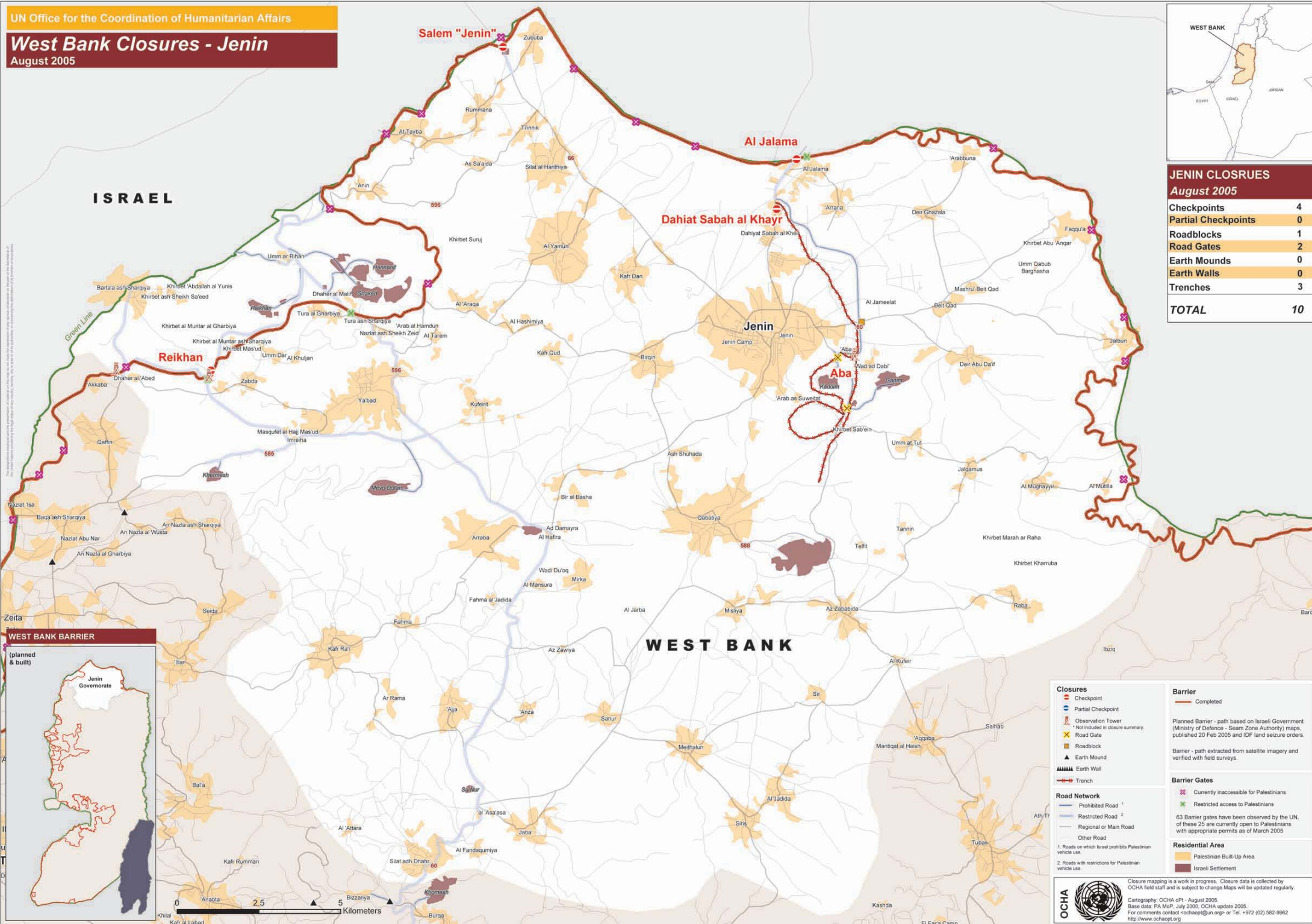


# West Bank Closures - Jenin

August 2005



JENIN CLOSURES	
August 2005	
Checkpoints	4
Partial Checkpoints	0
Roadblocks	1
Road Gates	2
Earth Mounds	0
Earth Walls	0
Trenches	3
<b>TOTAL</b>	<b>10</b>



**Closures**

- Checkpoint
- Partial Checkpoint
- Observation Tower
- Road Gate
- Roadblock
- Earth Mound
- Earth Wall
- Trench

**Road Network**

- Prohibited Road
- Restricted Road
- Regional or Main Road
- Other Road

**Barrier**

- Completed
- Planned Barrier - path based on Israeli Government (Ministry of Defence - Seam Zone Authority) maps, published 20 Feb 2005 and IDF land seizure orders.
- Barrier - path extracted from satellite imagery and verified with field surveys.

**Barrier Gates**

- Currently inaccessible for Palestinians
- Restricted access to Palestinians

63 Barrier gates have been observed by the UN, of these 25 are currently open to Palestinians with appropriate permits as of March 2005.

**Residential Area**

- Palestinian Built-Up Area
- Israeli Settlement