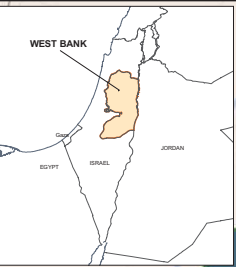
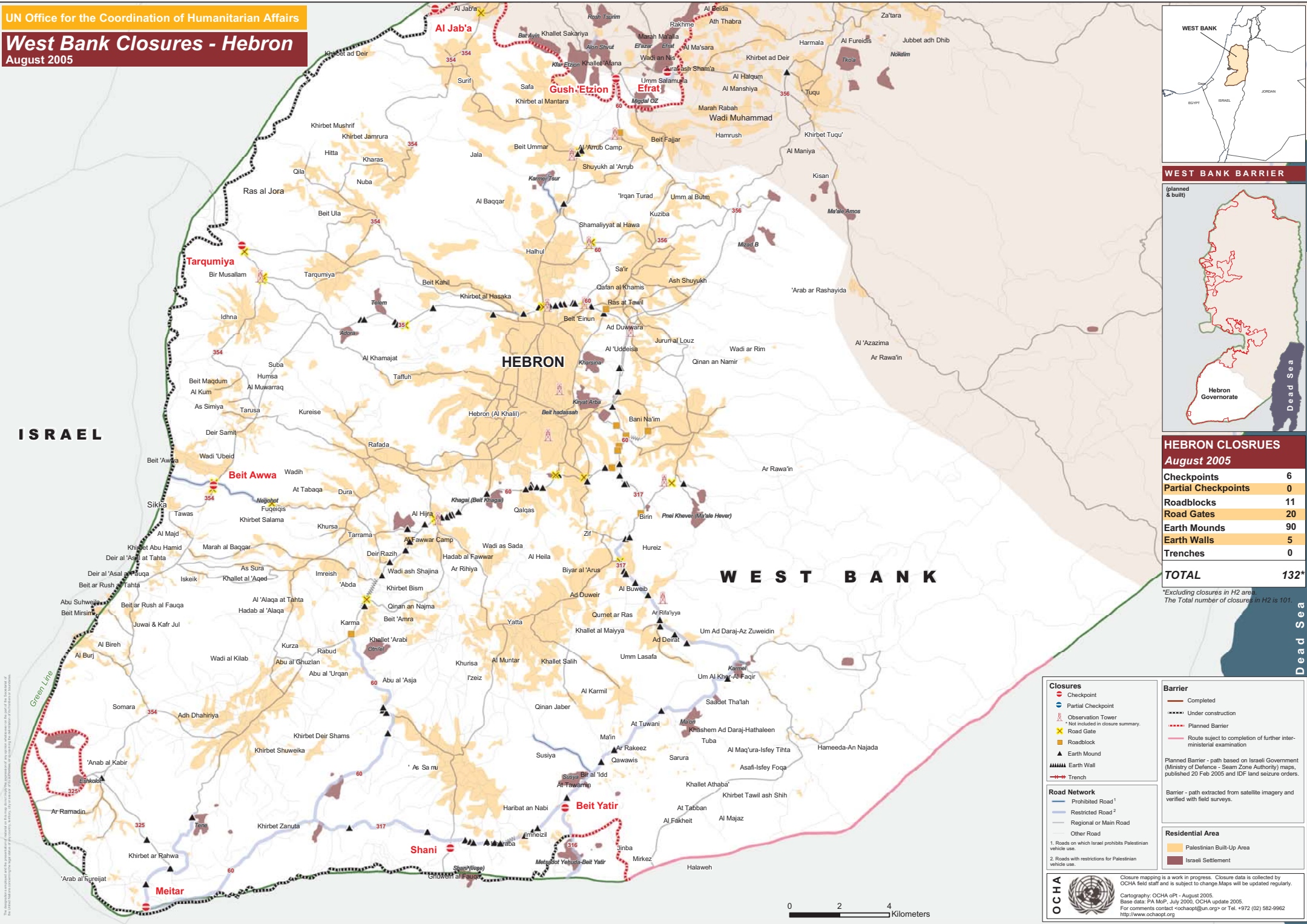
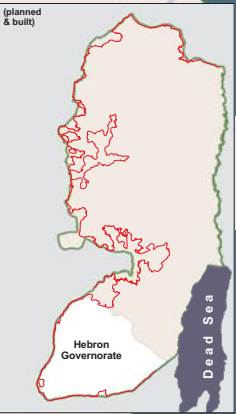


West Bank Closures - Hebron

August 2005



WEST BANK BARRIER



HEBRON CLOSURES August 2005

Checkpoints	6
Partial Checkpoints	0
Roadblocks	11
Road Gates	20
Earth Mounds	90
Earth Walls	5
Trenches	0
TOTAL	132*

*Excluding closures in H2 area. The Total number of closures in H2 is 101.

Closures

- Checkpoint
- Partial Checkpoint
- ⊗ Observation Tower
- ⊗ Not included in closure summary.
- ⊗ Road Gate
- Roadblock
- ▲ Earth Mound
- Earth Wall
- Trench

Road Network

- Prohibited Road¹
- Restricted Road²
- Regional or Main Road
- Other Road

1. Roads on which Israel prohibits Palestinian vehicle use.
2. Roads with restrictions for Palestinian vehicle use.

Barrier

- Completed
- - - Under construction
- - - Planned Barrier
- Route subject to completion of further inter-ministerial examination

Planned Barrier - path based on Israeli Government (Ministry of Defence - Seam Zone Authority) maps, published 20 Feb 2005 and IDF land seizure orders.

Barrier - path extracted from satellite imagery and verified with field surveys.

Residential Area

- Palestinian Built-Up Area
- Israeli Settlement

Closure mapping is a work in progress. Closure data is collected by OCHA field staff and is subject to change. Maps will be updated regularly.
Cartography: OCHA oPT - August 2005.
Base data: PA MoP, July 2000, OCHA update 2005.
For comments contact <ochaopt@un.org> or Tel. +972 (02) 582-9962
<http://www.ochaopt.org>

Dead Sea