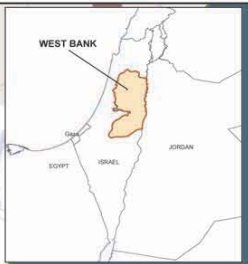
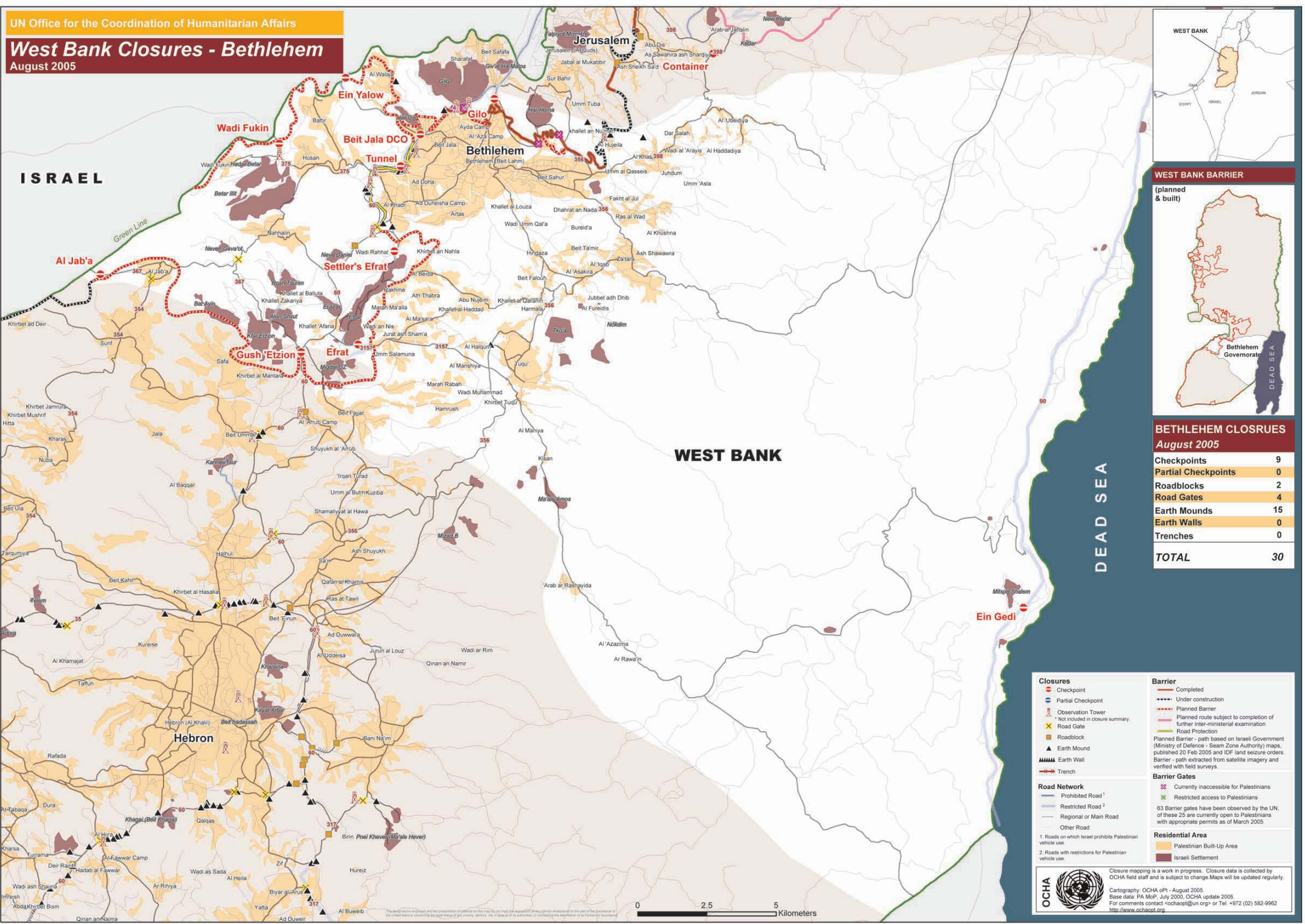


West Bank Closures - Bethlehem

August 2005



BETHLEHEM CLOSURES

August 2005

Checkpoints	9
Partial Checkpoints	0
Roadblocks	2
Road Gates	4
Earth Mounds	15
Earth Walls	0
Trenches	0
TOTAL	30

Closures

- Checkpoint
- Partial Checkpoint
- Observation Tower
- Road Gate
- Roadblock
- Earth Mound
- Earth Wall
- Trench

Barrier

- Completed
- Under construction
- Planned Barrier
- Planned route subject to completion of further inter-ministerial examination
- Road Protection

Planned Barrier - path based on Israeli Government (Ministry of Defence - Seam Zone Authority) maps, published 20 Feb 2005 and IDF land seizure orders.
 Barrier - path extracted from satellite imagery and verified with field surveys.

Barrier Gates

- Currently inaccessible for Palestinians
- Restricted access to Palestinians

63 Barrier gates have been observed by the UN, of these 25 are currently open to Palestinians with appropriate permits as of March 2005.


Road Network

- Prohibited Road¹
- Restricted Road²
- Regional or Main Road
- Other Road

1. Roads on which Israeli prohibits Palestinian vehicle use.
 2. Roads with restrictions for Palestinian vehicle use.

Residential Area

- Palestinian Built-Up Area
- Israeli Settlement

OCHA  Closure mapping is a work in progress. Closure data is collected by OCHA field staff and is subject to change. Maps will be updated regularly.

Cartography: OCHA ePT - August 2005.
 Base data: PA MoP, July 2000, OCHA update 2005.
 For comments contact ochaopt@un.org or Tel. +972 (02) 582-9962
<http://www.ochaopt.org>

