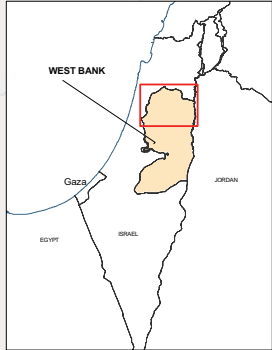
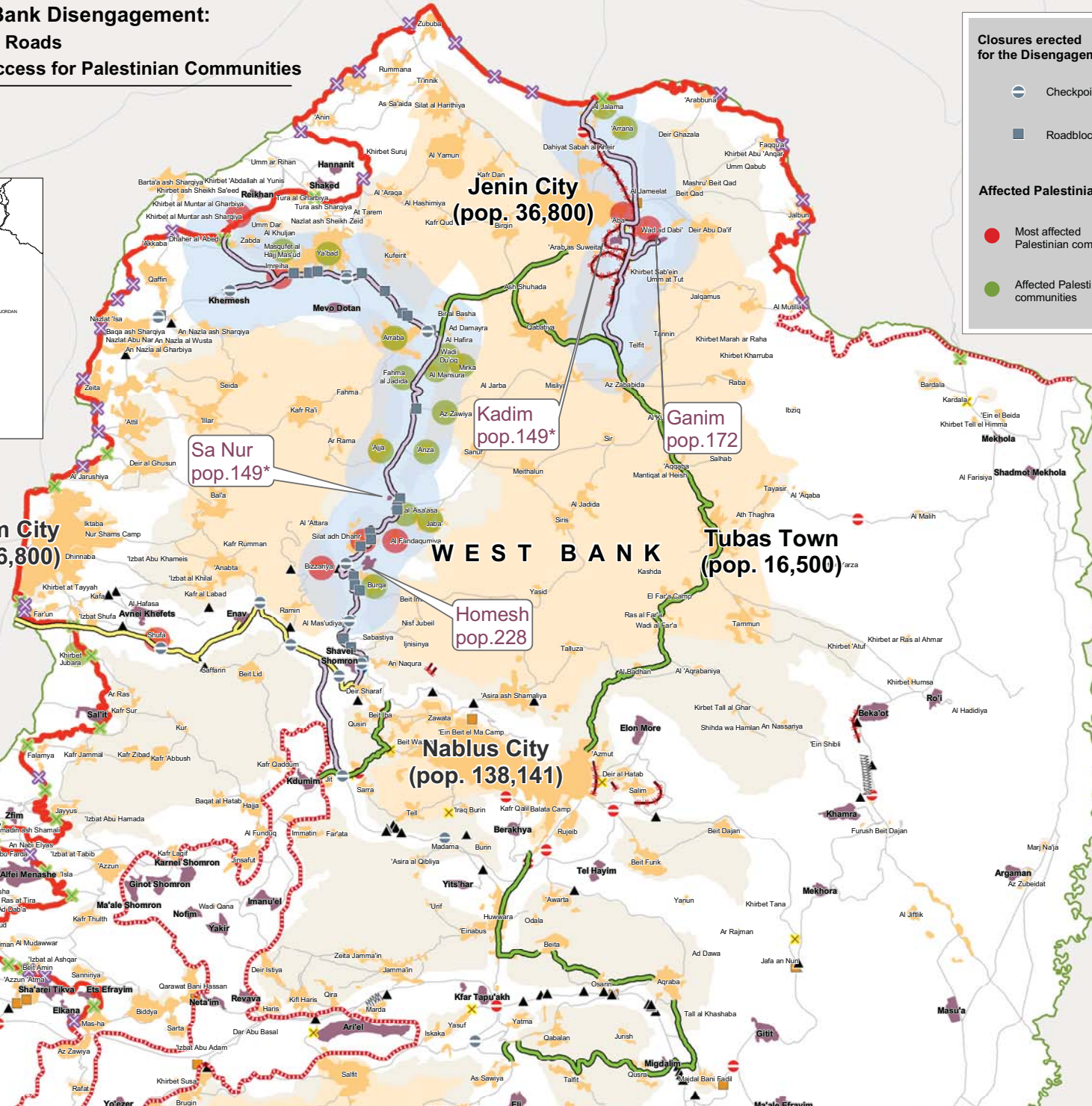


Northern West Bank Disengagement: Settler Evacuation Roads Affected Area & Access for Palestinian Communities



The descriptions employed and the presentation of material on this map do not imply the expression of any opinion whatsoever on the part of the Secretariat of the United Nations concerning the legal status of any territory, territory, city or area or of its authorities, or concerning the delimitation of its frontiers or boundaries.



Closures erected for the Disengagement

- Checkpoints
- Roadblocks

Access

- Evacuation Road (Military Zone)
- Alternative Evacuation Road
- Open Road

Affected Palestinian communities

- Most affected Palestinian communities
- Affected Palestinian communities

Affected Palestinian communities are towns or villages with a risk to be exposed to curfews, closures, clashes with the IDF and to settler violence.

Affected Area

Barrier

- Complete Barrier
- Planned Barrier

Planned Barrier - path based on Israeli Government (Ministry of Defense - Seam Zone Authority) maps, published 30 Jun 2004 and IDF land seizure orders.
Barrier - path extracted from satellite imagery and verified with field surveys.

Closures

- Checkpoint
- Earthmound
- Partial Checkpoint
- Road Gate
- Roadblock
- Earth Barrier
- Trench
- Observation Tower

Barrier Gates

- No access to Palestinians
- Restricted Access to Palestinians

Oslo Agreements

- Area (A) Civil and security control transferred to Palestinian Authority (PA)
- Area (B) Civil control transferred to PA; Security jointly shared by PA & Israel.
- Area (C) Civil and security authority remain under Israeli control.

Palestinian population figures: PCBS 2005 Projections.
Israeli settler population figures: Israeli Ministry of Interior-Dec 2004 / 2003 figure.

OCHA

Cartography: OCHA-oPI, August 2005
Base data: PMAF, July 2000; OCHA update 2004
For comments contact ochaoip@un.org or Tel. +972 (02) 582-9952
<http://www.ochaopt.org>

0 2.5 5 10 Kilometers