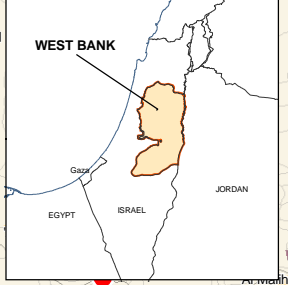
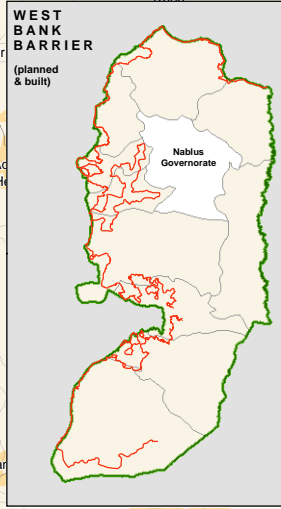
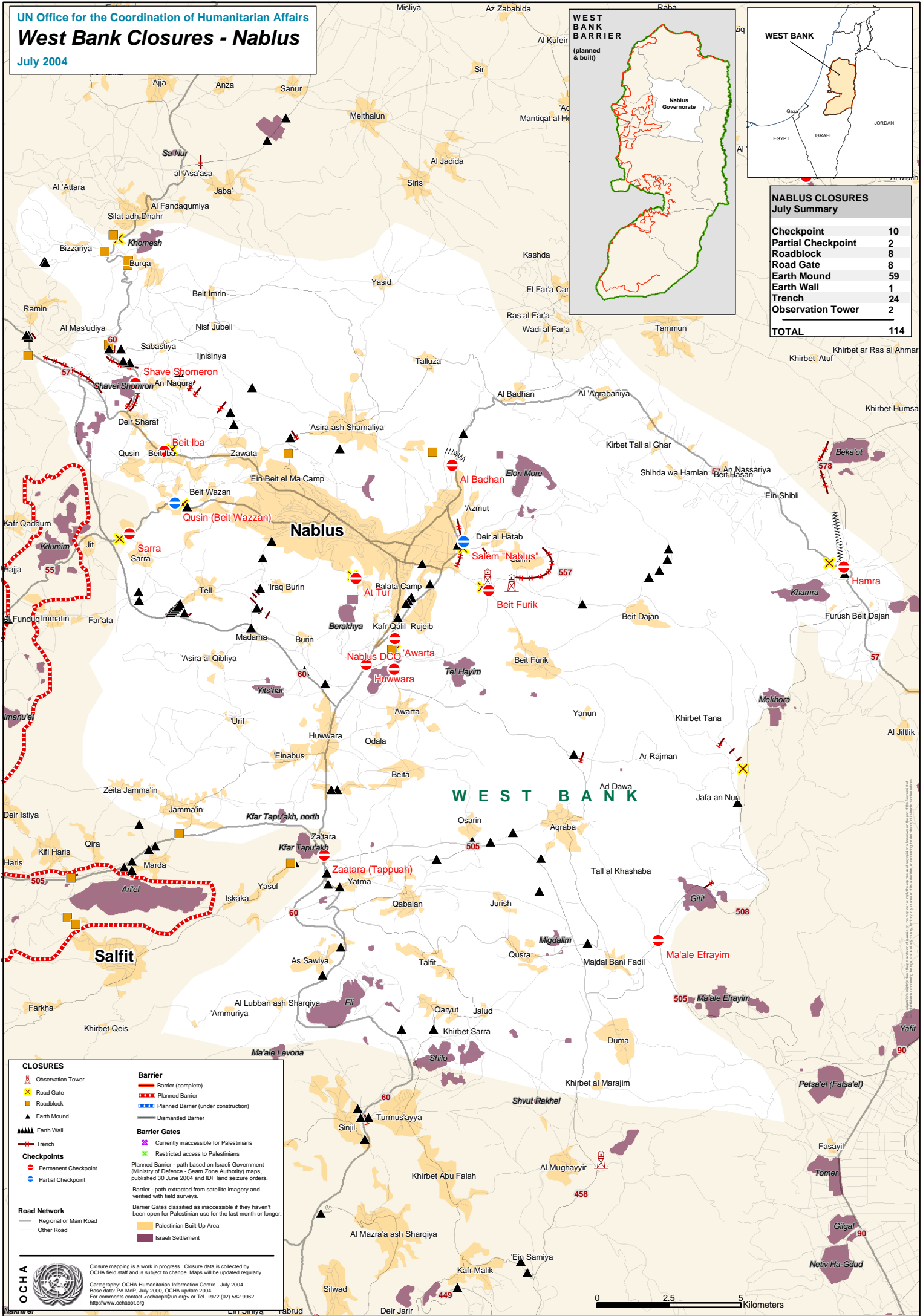


UN Office for the Coordination of Humanitarian Affairs
West Bank Closures - Nablus
 July 2004



NABLUS CLOSURES July Summary

Checkpoint	10
Partial Checkpoint	2
Roadblock	8
Road Gate	8
Earth Mound	59
Earth Wall	1
Trench	24
Observation Tower	2
TOTAL	114



CLOSURES

- Observation Tower
- Road Gate
- Roadblock
- Earth Mound
- Earth Wall
- Trench
- Barrier
- Barrier Gates
- Checkpoint
- Partial Checkpoint
- Road Network
- Regional or Main Road
- Other Road

Barrier

- Barrier (complete)
- Planned Barrier
- Planned Barrier (under construction)
- Dismantled Barrier
- Currently inaccessible for Palestinians
- Restricted access to Palestinians

Barrier Gates

- Currently inaccessible for Palestinians
- Restricted access to Palestinians

Checkpoint

- Permanent Checkpoint
- Partial Checkpoint

Road Network

- Regional or Main Road
- Other Road

Other

- Planned Barrier - path based on Israeli Government (Ministry of Defence - Seam Zone Authority) maps, published 30 June 2004 and IDF land seizure orders.
- Barrier - path extracted from satellite imagery and verified with field surveys.
- Barrier Gates classified as inaccessible if they haven't been open for Palestinian use for the last month or longer.
- Palestinian Built-Up Area
- Israeli Settlement

Closure mapping is a work in progress. Closure data is collected by OCHA field staff and is subject to change. Maps will be updated regularly.

Cartography: OCHA Humanitarian Information Centre - July 2004
 Base data: PA MoP, July 2000, OCHA update 2004
 For comments contact: ocha@p@un.org or Tel. +972 (02) 582-9962
<http://www.ochaopt.org>

