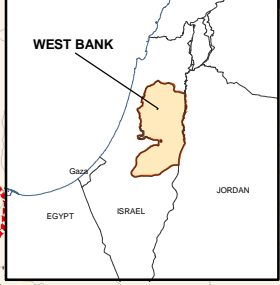
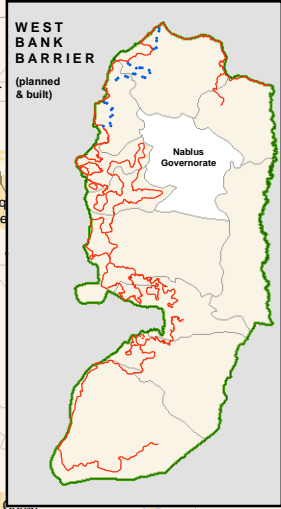
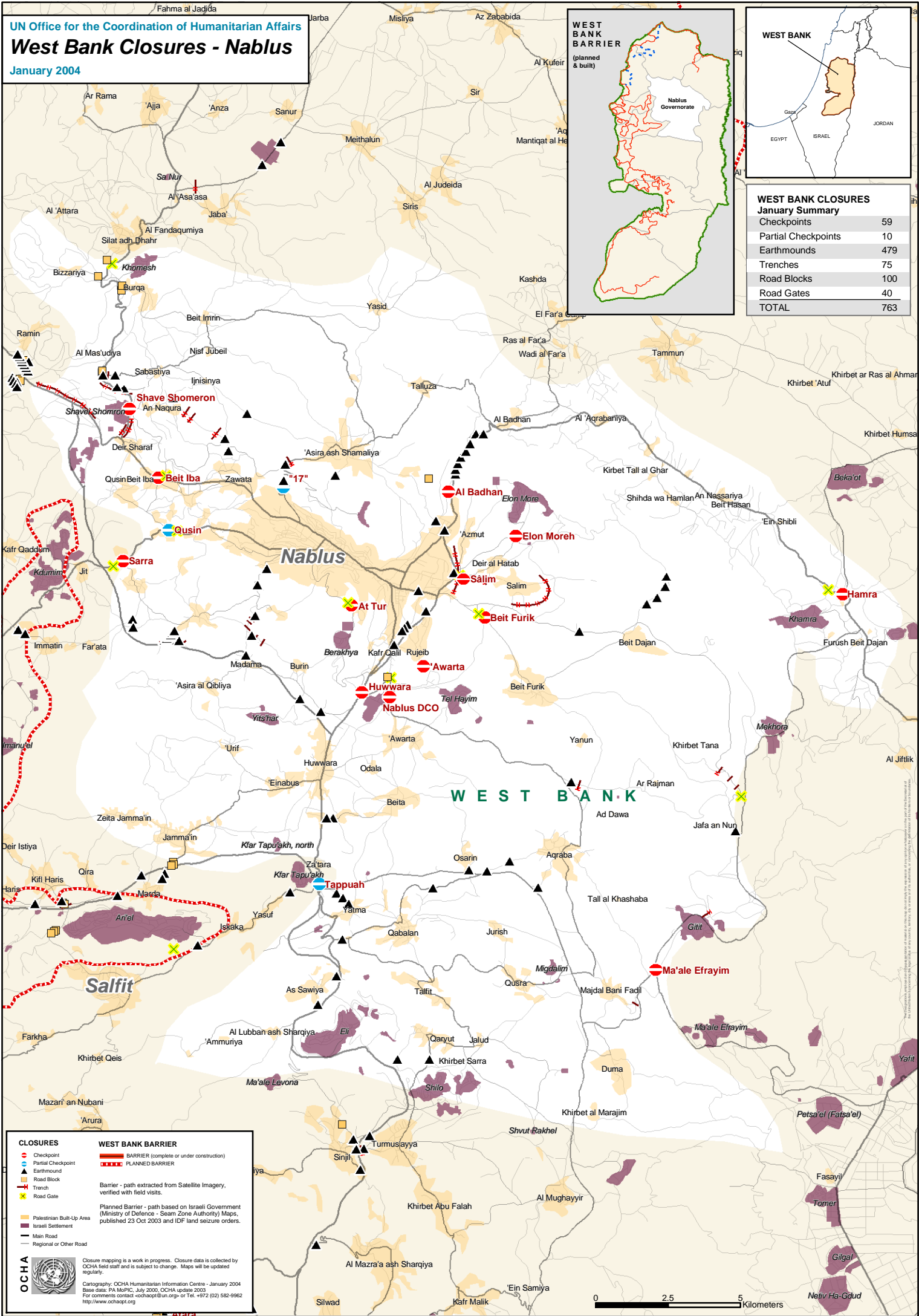


UN Office for the Coordination of Humanitarian Affairs
West Bank Closures - Nablus
 January 2004



WEST BANK CLOSURES January Summary

Checkpoints	59
Partial Checkpoints	10
Earthmounds	479
Trenches	75
Road Blocks	100
Road Gates	40
TOTAL	763



CLOSURES

- Checkpoint
- Partial Checkpoint
- Earthmound
- Road Block
- Trench
- Road Gate

WEST BANK BARRIER

- BARRIER (complete or under construction)
- PLANNED BARRIER

Barrier - path extracted from Satellite Imagery, verified with field visits.

Planned Barrier - path based on Israeli Government (Ministry of Defence - Seam Zone Authority) Maps, published 23 Oct 2003 and IDF land seizure orders.

Closure mapping is a work in progress. Closure data is collected by OCHA field staff and is subject to change. Maps will be updated regularly.

Cartography: OCHA Humanitarian Information Centre - January 2004
 Base data: PA MoPIC, July 2000, OCHA update 2003
 For comments contact: ochaip@un.org or Tel: +972 (02) 582-9962
<http://www.ochaopt.org>

OCHA

