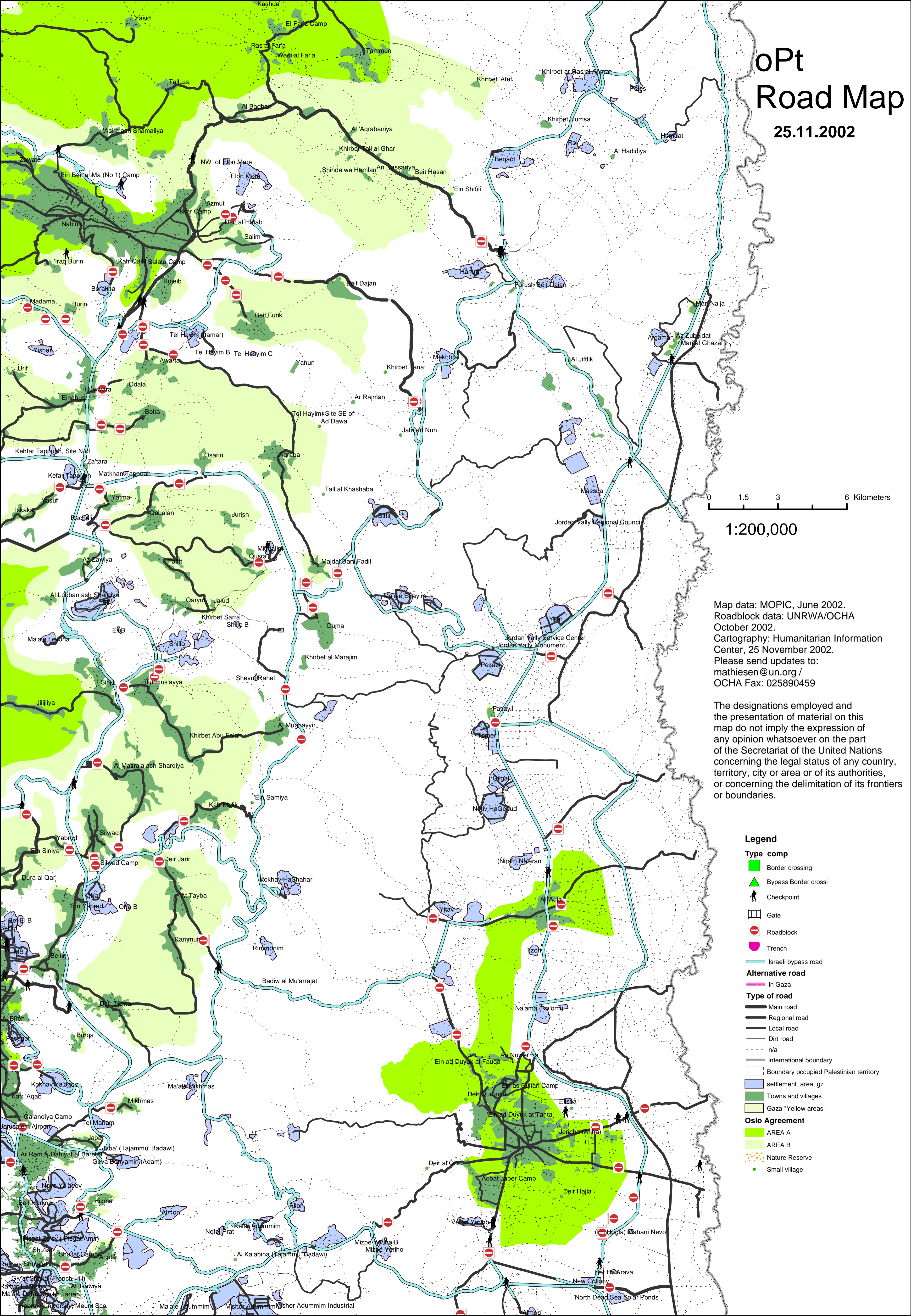


oPt Road Map

25.11.2002



0 1.5 3 6 Kilometers

1:200,000

Map data: MOPIC, June 2002.
Roadblock data: UNRWA/OCHA
October 2002.
Cartography: Humanitarian Information
Center, 25 November 2002.
Please send updates to:
mathiesen@un.org /
OCHA Fax: 025890459

The designations employed and
the presentation of material on this
map do not imply the expression of
any opinion whatsoever on the part
of the Secretariat of the United Nations
concerning the legal status of any country,
territory, city or area or of its authorities,
or concerning the delimitation of its frontiers
or boundaries.

- Legend**
- Type_comp**
 - Border crossing
 - Bypass Border crossi
 - Checkpoint
 - Gate
 - Roadblock
 - Trench
 - Israeli bypass road
 - Alternative road**
 - In Gaza
 - Type of road**
 - Main road
 - Regional road
 - Local road
 - Dirt road
 - n/a
 - International boundary
 - Boundary occupied Palestinian territory
 - settlement_area_gz
 - Towns and villages
 - Gaza "Yellow areas"
 - Olo Agreement**
 - AREA A
 - AREA B
 - Nature Reserve
 - Small village