

# West Bank Closures - Jerusalem

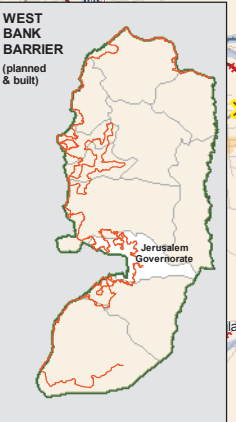
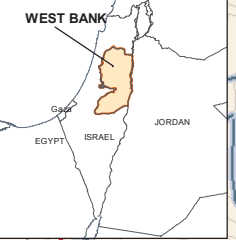
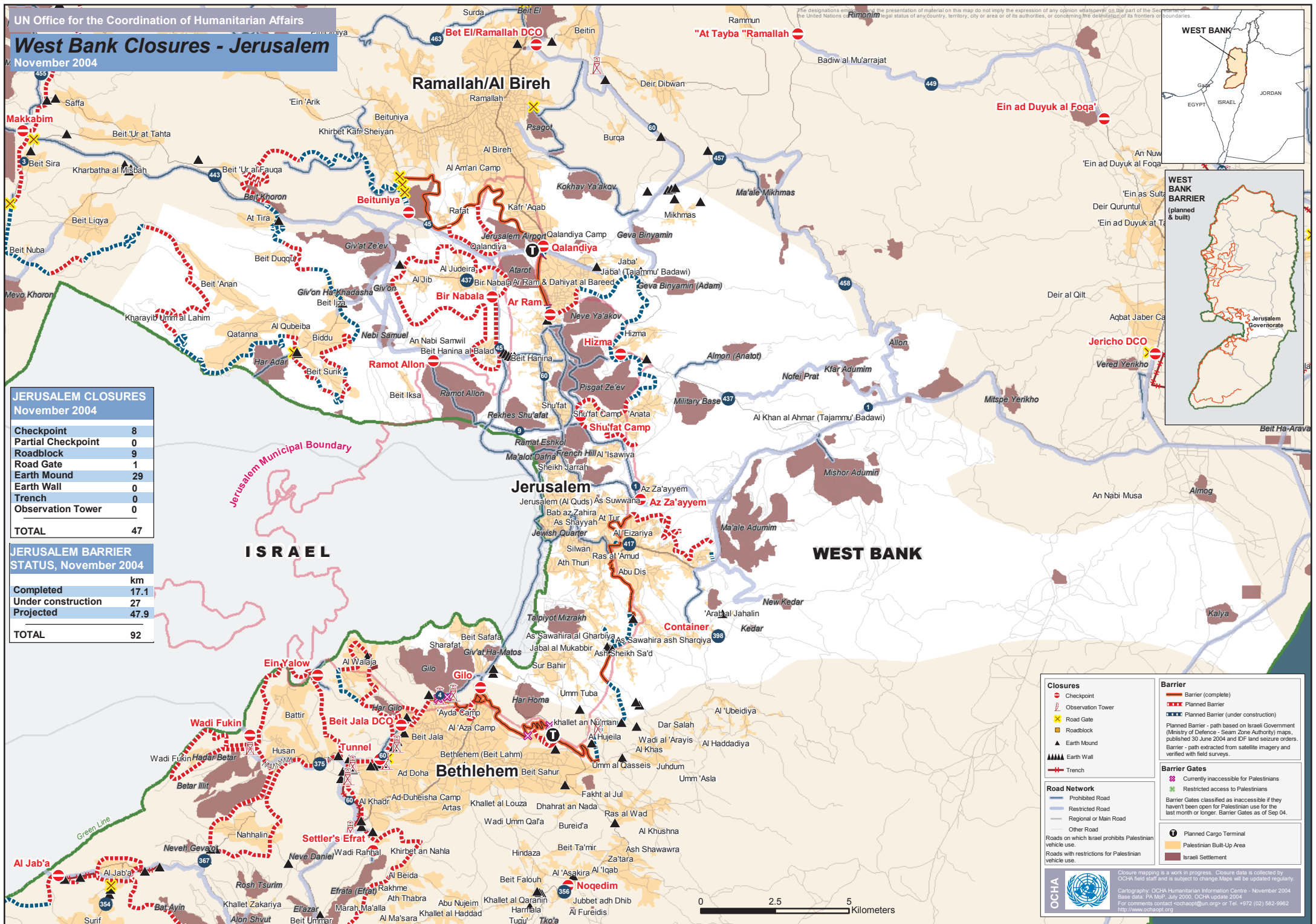
November 2004

## JERUSALEM CLOSURES

JERUSALEM CLOSURES	November 2004
Checkpoint	8
Partial Checkpoint	0
Roadblock	9
Road Gate	1
Earth Mound	29
Earth Wall	0
Trench	0
Observation Tower	0
<b>TOTAL</b>	<b>47</b>

## JERUSALEM BARRIER

JERUSALEM BARRIER STATUS, November 2004	km
Completed	17.1
Under construction	27
Projected	47.9
<b>TOTAL</b>	<b>92</b>



### Closures

- Checkpoint
- Observation Tower
- Road Gate
- Roadblock
- ▲ Earth Mound
- ▲ Earth Wall
- Trench

### Road Network

- Prohibited Road
- Restricted Road
- Regional or Main Road
- Other Road

Roads on which Israel prohibits Palestinian vehicle use.

Roads with restrictions for Palestinian vehicle use.

### Barrier

- Barrier (complete)
- - - Planned Barrier
- - - Planned Barrier (under construction)

Planned Barrier - path based on Israeli Government (Ministry of Defence - Seam Zone Authority) maps, published 30 June 2004 and O.F. land security orders.

Barrier - path extracted from satellite imagery and verified with field surveys.

### Barrier Gates

- ⊘ Currently inaccessible to Palestinians
- ⊘ Restricted access to Palestinians

Barrier Gates classified as inaccessible if they haven't been open for Palestinian use for the last month or longer. Barrier Gates as of Sep 04.

- Planned Cargo Terminal
- Palestinian Built-Up Area
- Israeli Settlement

**OCHA**

Closure mapping is a work in progress. Closure data is collected by OCHA field staff and is subject to change. Maps will be updated regularly.

Cartography: OCHA Humanitarian Information Centre - November 2004  
 Base data: PA MoP, July 2000, OCHA update 2004  
 For comments contact: ocha-hoip@un.org or Tel. +972 (02) 582 3962  
<http://www.ochaopt.org>

