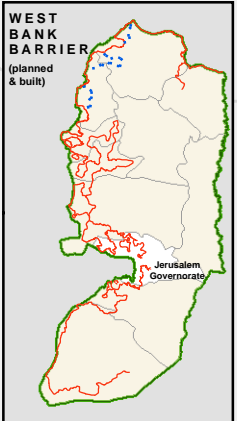
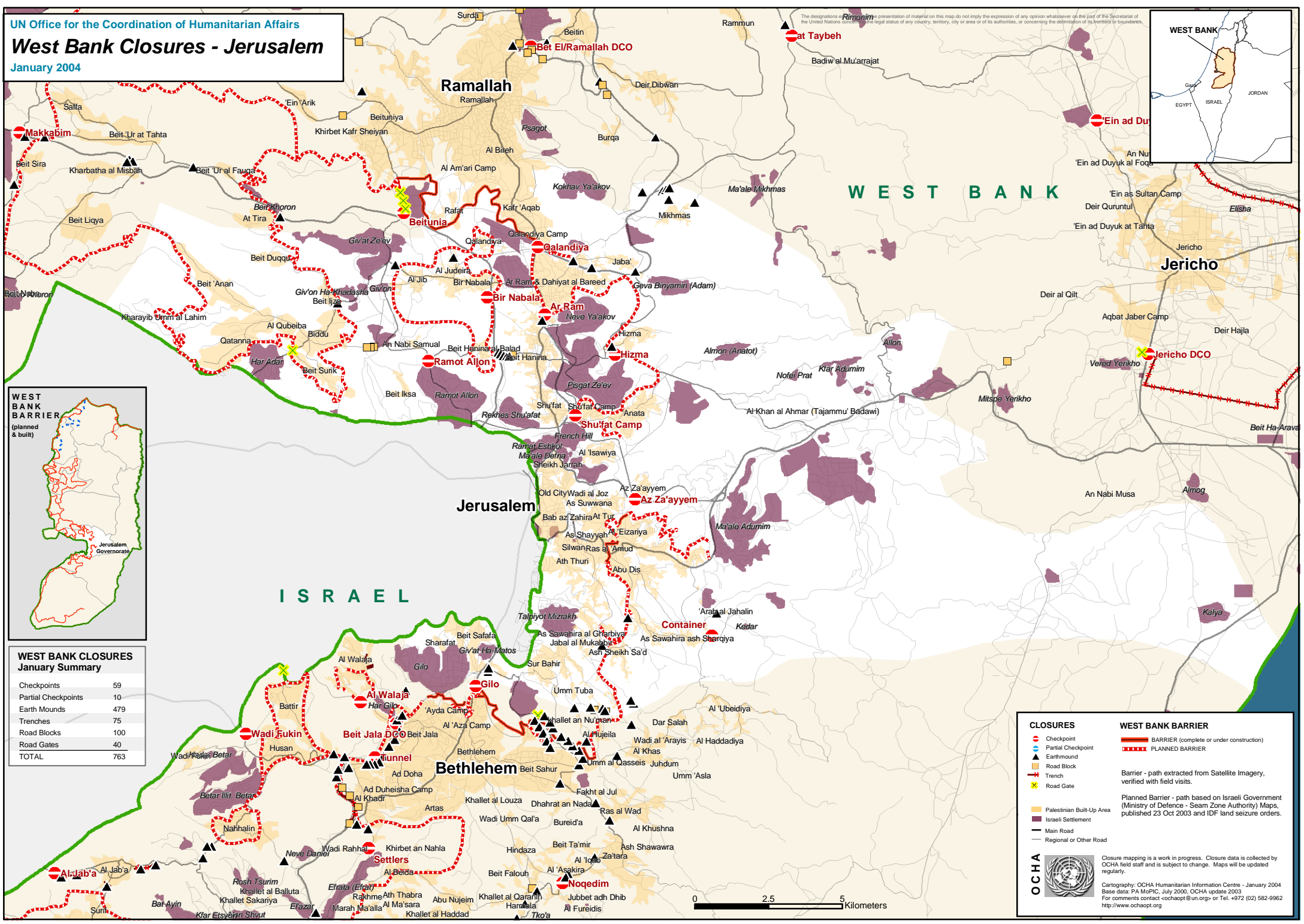
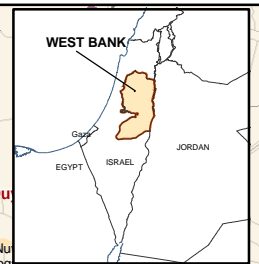


UN Office for the Coordination of Humanitarian Affairs
West Bank Closures - Jerusalem
 January 2004

The designations and the presentation of material on this map do not imply the expression of any opinion whatsoever on the part of the Secretariat of the United Nations concerning the legal status of any country, territory, city or area or of its authorities, or concerning the delimitation of its frontiers or boundaries.



WEST BANK CLOSURES January Summary

Checkpoints	59
Partial Checkpoints	10
Earth Mounds	479
Trenches	75
Road Blocks	100
Road Gates	40
TOTAL	763

CLOSURES

- Checkpoint
- Partial Checkpoint
- Earthmound
- Road Block
- Trench
- Road Gate

WEST BANK BARRIER

- BARRIER (complete or under construction)
- PLANNED BARRIER

Barrier - path extracted from Satellite Imagery, verified with field visits.

Planned Barrier - path based on Israeli Government (Ministry of Defence - Seam Zone Authority) Maps, published 23 Oct 2003 and IDF land seizure orders.

OCHA

Closure mapping is a work in progress. Closure data is collected by OCHA field staff and is subject to change. Maps will be updated regularly.

Cartography: OCHA Humanitarian Information Centre - January 2004
 Base data: FAo/MapIC, July 2000, OCHA update 2003
 For comments contact ochaopt@un.org or Tel: +972 (02) 582-9962
<http://www.ochaopt.org>

