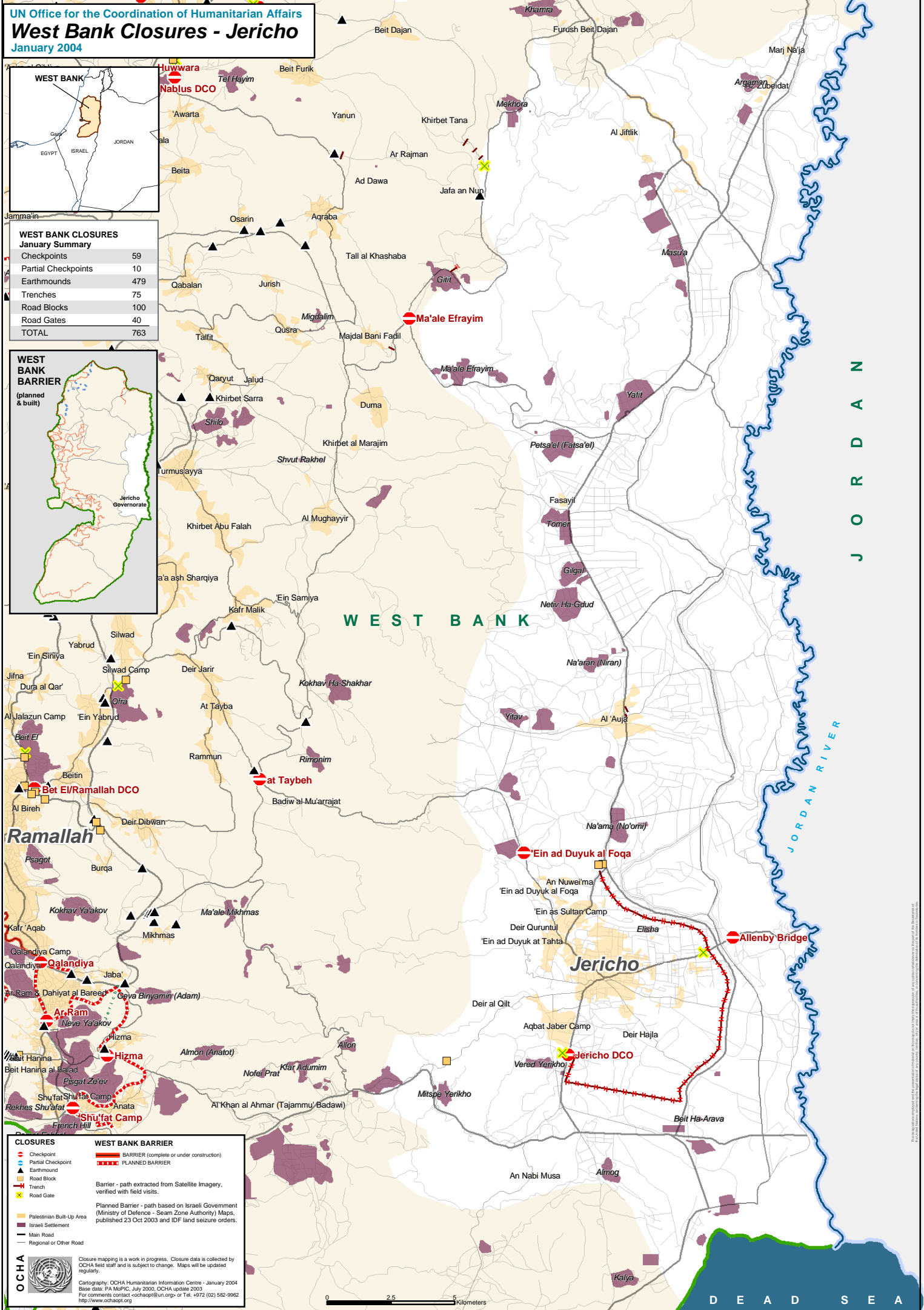
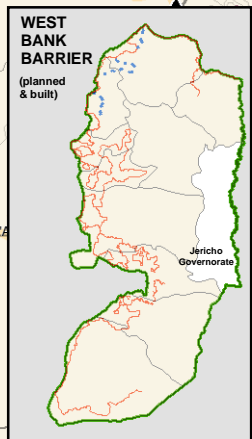


UN Office for the Coordination of Humanitarian Affairs
West Bank Closures - Jericho
 January 2004



WEST BANK CLOSURES
 January Summary

Checkpoints	59
Partial Checkpoints	10
Earthmounds	479
Trenches	75
Road Blocks	100
Road Gates	40
TOTAL	763



CLOSURES

- Checkpoint
- Partial Checkpoint
- Earthmound
- Road Block
- Trench
- Road Gate

WEST BANK BARRIER

- BARRIER (complete or under construction)
- PLANNED BARRIER

Barrier - path extracted from Satellite Imagery, verified with field visits.
 Planned Barrier - path based on Israeli Government (Ministry of Defence - Seam Zone Authority) Maps, published 23 Oct 2003 and IDF land seizure orders.

Legend:

- Palestinian Built-Up Area
- Israeli Settlement
- Main Road
- Regional or Other Road

OCHA

Closure mapping is a work in progress. Closure data is collected by OCHA field staff and is subject to change. Maps will be updated regularly.

Cartography: OCHA Humanitarian Information Centre - January 2004
 Base data: PA MSPIC, July 2000, OCHA update 2003
 For comments contact: ochaapi@un.org or Tel. +972 (02) 582-9922
<http://www.ochaopt.org>

0 2.5 5 Kilometers

D E A D S E A

J O R D A N