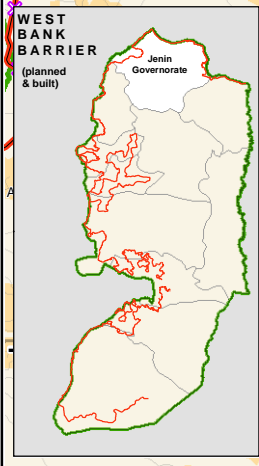
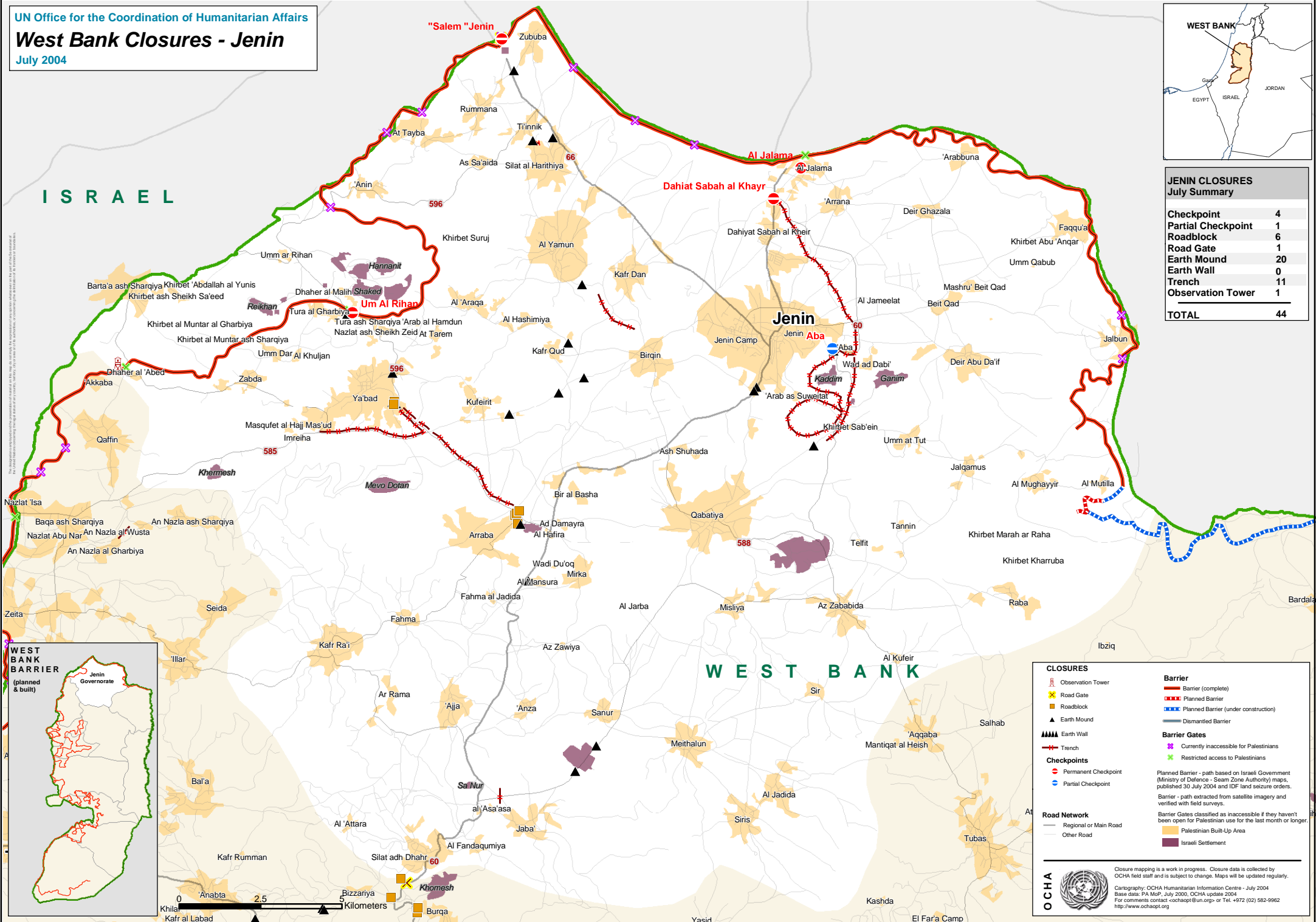


JENIN CLOSURES July Summary

Checkpoint	4
Partial Checkpoint	1
Roadblock	6
Earth Mound	1
Earth Wall	0
Trench	11
Observation Tower	1
TOTAL	44



CLOSURES

- Observation Tower
- Road Gate
- Roadblock
- Earth Mound
- Earth Wall
- Trench
- Checkpoint
- Partial Checkpoint

Barrier

- Barrier (complete)
- Planned Barrier
- Planned Barrier (under construction)
- Dismantled Barrier

Barrier Gates

- Currently inaccessible for Palestinians
- Restricted access to Palestinians

Road Network

- Regional or Main Road
- Other Road

Other Symbols:

- Palestinian Built-Up Area
- Israeli Settlement

Closure mapping is a work in progress. Closure data is collected by OCHA field staff and is subject to change. Maps will be updated regularly.

Cartography: OCHA Humanitarian Information Centre - July 2004
 Base data: PA MoF - July 2000; OCHA update 2004
 For comments contact <ochaapt@un.org> or Tel. +972 (02) 582-9962
<http://www.ochaapt.org>

