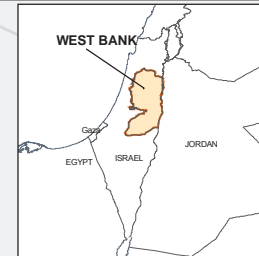


West Bank Closures - Jenin

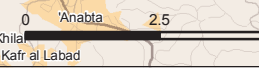
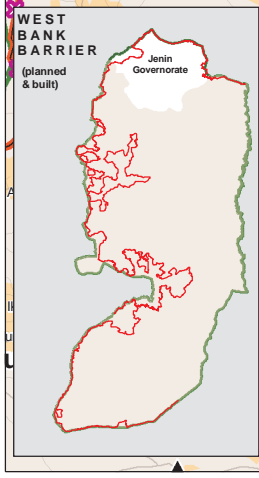
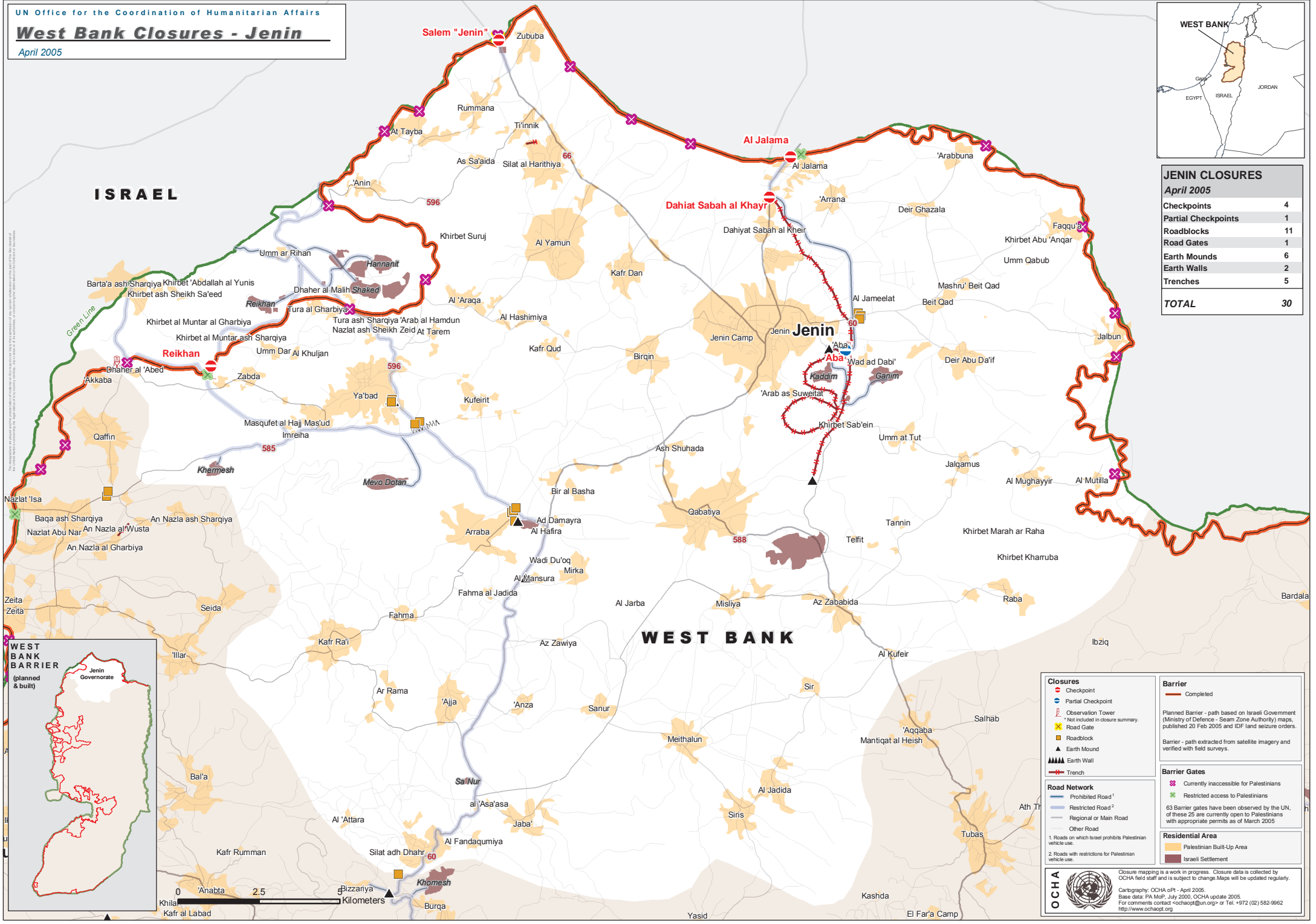
April 2005



JENIN CLOSURES

April 2005

Checkpoints	4
Partial Checkpoints	1
Roadblocks	11
Road Gates	1
Earth Mounds	6
Trenches	5
TOTAL	30



Closures

- Checkpoint
- Partial Checkpoint
- / Observation Tower
- ✕ Road Gate
- Roadblock
- ▲ Earth Mound
- ▲▲▲ Earth Wall
- Trench

Road Network

- Prohibited Road¹
- Restricted Road²
- Regional or Main Road
- Other Road

1. Roads on which Israel prohibits Palestinian vehicle use.
2. Roads with restrictions for Palestinian vehicle use.

Barrier

- Completed

Planned Barrier - path based on Israeli Government (Ministry of Defence - Seam Zone Authority) maps, published 20 Feb 2005 and IDF land seizure orders.

Barrier - path extracted from satellite imagery and verified with field surveys.

Barrier Gates

- ✕ Currently inaccessible for Palestinians
- ✕ Restricted access to Palestinians

63 Barrier gates have been observed by the UN, of these 25 are currently open to Palestinians with appropriate permits as of March 2005.

Residential Area

- Palestinian Built-Up Area
- Israeli Settlement

Closure mapping is a work in progress. Closure data is collected by OCHA field staff and is subject to change. Maps will be updated regularly.
Cartography: OCHA o/p - April 2005.
Base data: PA MoP, July 2000, OCHA update 2005.
For comments contact <ochaopt@un.org> or Tel. +972 (02) 582-9962
<http://www.ochaopt.org>