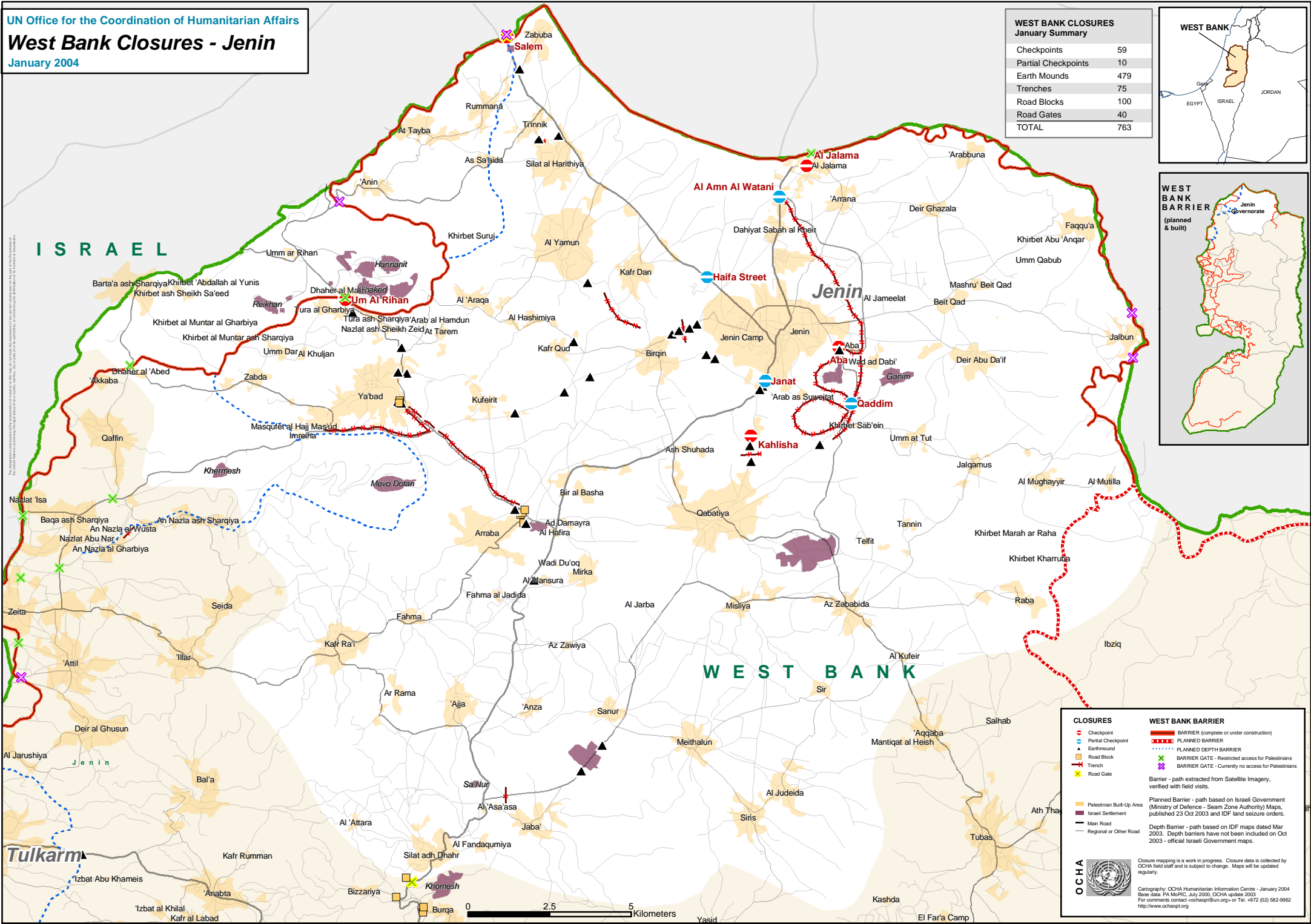
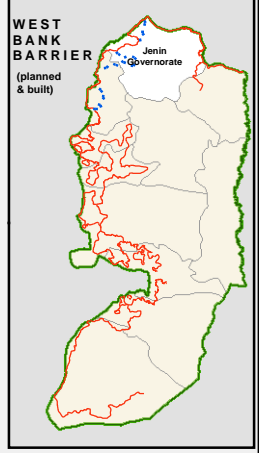
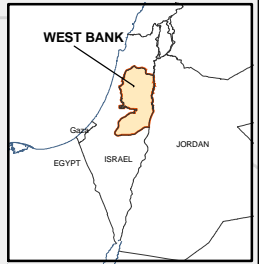


# West Bank Closures - Jenin

January 2004

WEST BANK CLOSURES January Summary	
Checkpoints	59
Partial Checkpoints	10
Earth Mounds	479
Trenches	75
Road Blocks	100
Road Gates	40
<b>TOTAL</b>	<b>763</b>



**CLOSURES**

- Checkpoint
- Partial Checkpoint
- Earthmound
- Road Block
- Trench
- Road Gate

**WEST BANK BARRIER**

- BARRIER (complete or under construction)
- PLANNED BARRIER
- PLANNED DEPTH BARRIER
- BARRIER GATE - Restricted access for Palestinians
- BARRIER GATE - Currently no access for Palestinians

Barrier - path extracted from Satellite Imagery, verified with field visits.

Planned Barrier - path based on Israeli Government (Ministry of Defence - Seam Zone Authority) Maps, published 23 Oct 2003 and IDF land seizure orders.

Depth Barrier - path based on IDF maps dated Mar 2003. Depth barriers have not been included on Oct 2003 - official Israeli Government maps.

**OCHA**

Closure mapping is a work in progress. Closure data is collected by OCHA field staff and is subject to change. Maps will be updated regularly.

Cartography: OCHA Humanitarian Information Centre - January 2004  
 Base data: SPN MAPRC, July 2000; OCHA updates 2003  
 For comments contact: ochaapt@un.org or Tel. +972 (02) 582-9962  
<http://www.ochaopt.org>

