



GENERAL

- Jayyus, Qalqiliya district. 3,500 inhabitants.
- Barrier completed August 2003, 6 kilometres from Green Line. Cuts off 8,600 dunams cultivated land; 50,000 + fruit & olive trees; 70+ greenhouses; 6 groundwater wells.
- June 2008: Recommended route revision 'returns' approx. 2,500 dunams. Still cuts off Al-Murooj and Stuah areas, most productive for fruit and vegetables; 4 wells; most greenhouses.

PERMITS

- October 2003, land between the Barrier and Green Line 'closed area'; Permits & Gate regime declared.
- Subsequently, new arrangements – proving 'connection to the land': copies of ID cards and current permits; valid ownership or land taxation documents; map of the land; certificates of inheritance; proof that land is still in applicant's possession and has not been sold.
- UNOCHA-UNRWA survey 2007: less than 20% who used to work land in closed area before Barrier now granted permits.
- Distribution irregular; some families granted more than one permit, others single permit - often not youngest or most able-bodied; other families no permits at all.
- Excludes tenant farmers and landless labourers, second-degree relatives, those with security records. Those repeatedly refused discouraged from re-applying.
- October 2003, Israeli DCO distributes 630 three-month 'visitor' permits to Jayyus.
- Jayyus June 2008: only 168 permits, now only valid for 6 months. Rejected for security reasons; 'no connection to the land'; 'not having enough land' (half dunam).
- 2007 olive harvest season: 419 applied, approx. 100 approved for 1-month.

GATES

- Along the total route of the Barrier, 66 gates accessible to Palestinians. Daily basis; seasonal; seasonal/weekly; or prior coordination.
- Jayyus South Gate: 08.30-08.45, 13.45-14.00 & 17.15-17.45. North Gate. 0700-0830, 1230-1330 and 1630-1700.

Consequences of restricted opening hours:

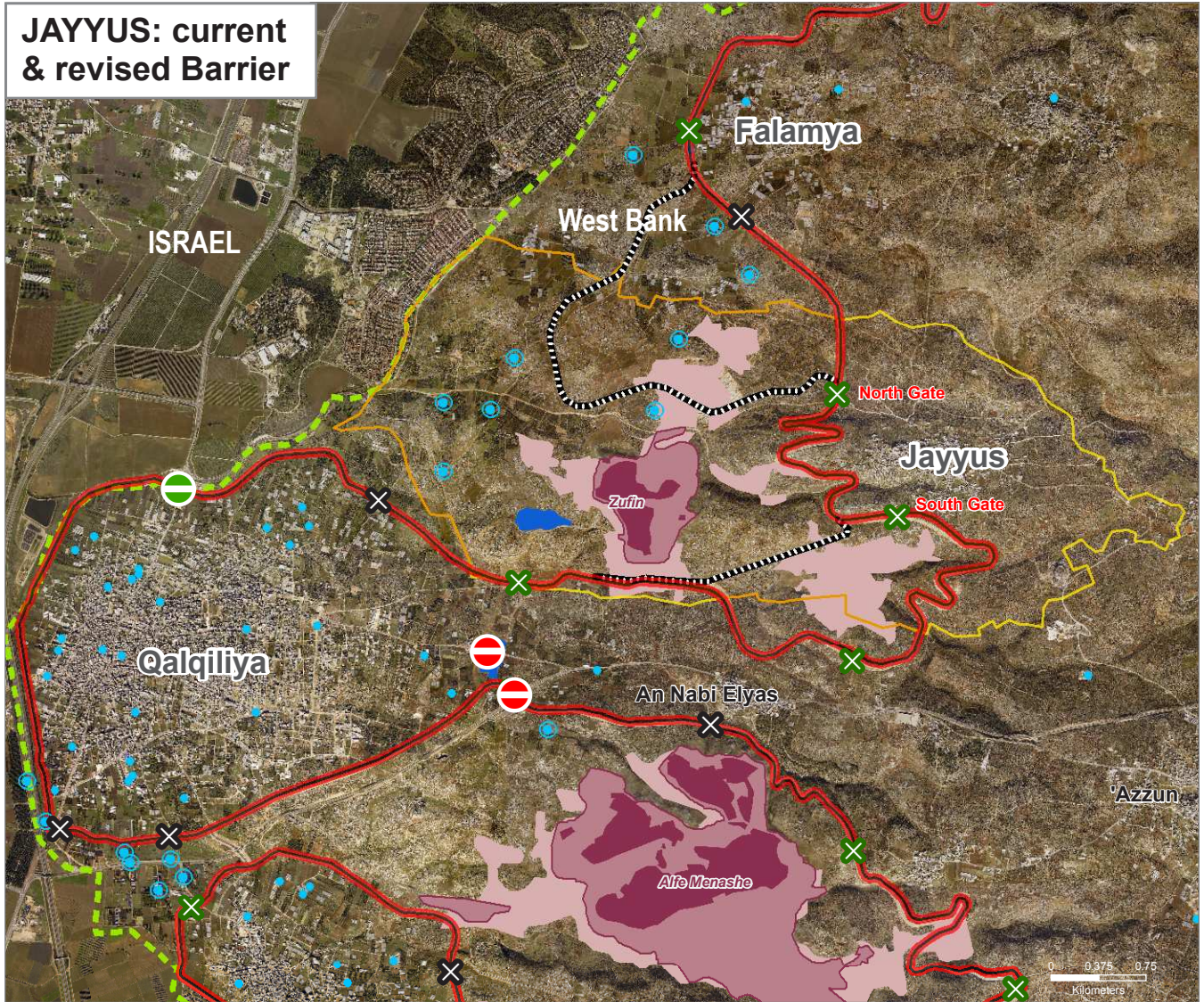
- Minority of farmers granted 24-hour permits; employed and 'part-time' farmers cannot work.
- Farmers work in summer in the sun; in winter, queue in dark and the cold weather.
- Maximum ten hours of farming not sufficient for irrigated agriculture. Greenhouses require daily irrigation - best carried out in the evening to lessen evaporation.
- Gates closed and un-staffed between opening times; farmers stranded in case of emergency.
- Restrictions on vehicles and on materials. Only 3 trucks in Jayyus have permits to cross into closed area.

HUMANITARIAN IMPACT

- Many farmers no longer or infrequently cultivate land, or have resorted to lower-maintenance and lower-yield crops.
- Approx. 100 greenhouses in Jayyus and Falamyia dismantled since the Barrier.
- 500 dunams of villages' land converted from citrus trees to grain.
- Only one herding family possessing the 24-hour permit.
- Unemployment now stands at 70%.
- Jayyus transformed from a net exporter of food to a community where social hardship cases receive food aid.
- First signs of displacement with young men, particularly university-educated, moving to West Bank cities or emigrating.



JAYYUS: current & revised Barrier



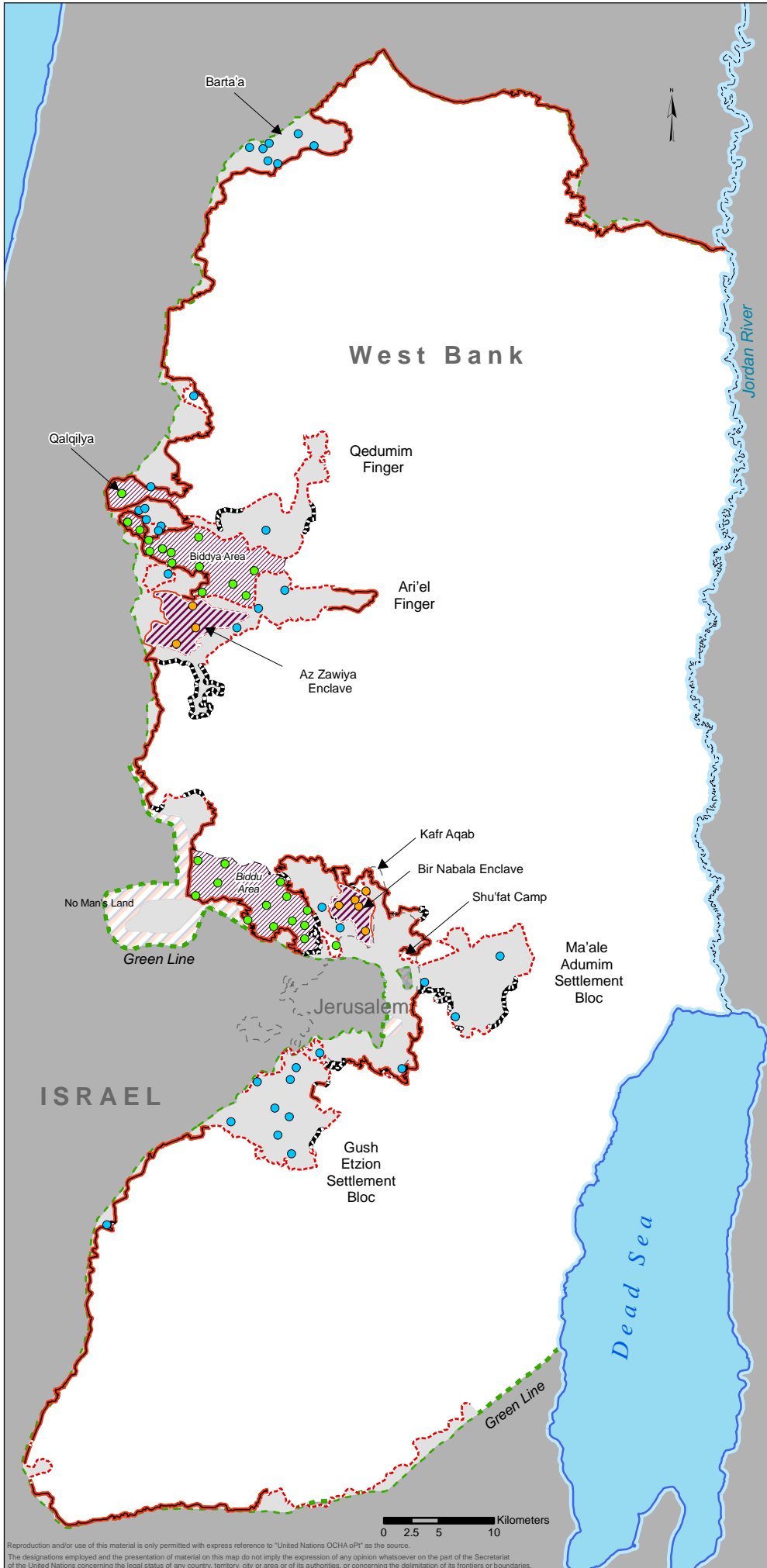
	Completed Barrier		Jayyus Land		Palestinian wells		Gates		Settlements & military infrastructure
	Revised Barrier		Isolated by the Barrier (864 hectares)		Isolated by the Barrier		No access to Palestinians		Settlement built-up area
	Green Line		East of the Barrier (398 hectares)		East of the Barrier		Restricted access to Palestinians		Settlement outer limits
									Area within settlement boundary
									Military base

0 0.375 0.75
Kilometers



West Bank Barrier Route Projections

July 2008



Area Affected

The Barrier's total length is 723 km, more than twice the length of the 1949 Armistice Line (Green Line) between the West Bank and Israel.

The total area located between the Barrier and the Green Line is 9.8 % of the West Bank, including East Jerusalem and No Man's Land.

When completed, approximately 13 % of the Barrier will be constructed on the Green Line or in Israel with 87 % inside the West Bank.

Populations Affected

If the Barrier is completed based on the current route:

Approximately 35,000 Palestinians holding West Bank ID cards in 35 communities will be located between the Barrier and the Green Line.

The majority of the approximately 250,000 Palestinians with East Jerusalem ID cards will reside between the Barrier and the Green Line. However, Palestinian communities inside the current municipal boundary, Kafr Aqab and Shu'fat Camp, are separated from East Jerusalem by the Barrier.

Approximately 125,000 Palestinians will be surrounded by the Barrier on three sides. These comprise 28 communities; the Biddya and Biddu areas, and the city of Qalqilya.

Approximately 26,000 Palestinians in 8 communities in the Az Zawiya and Bir Nabala Enclaves will be surrounded on four sides by the Barrier, with a tunnel or road connection to the rest of the West Bank.

Barrier Route

- Completed
- Under construction
- Planned

Cartography and Barrier Themes: OCHA-oPt IMU
Map December 2007
Base data: MoPIC (2000) updates OCHA (2006)

For comments contact <ochaopt@un.org>
Tel. +972 (02) 582-9962 <http://www.ochaopt.org>

Reproduction and/or use of this material is only permitted with express reference to "United Nations OCHA oPt" as the source.
The designations employed and the presentation of material on this map do not imply the expression of any opinion whatsoever on the part of the Secretariat of the United Nations concerning the legal status of any country, territory, city or area or of its authorities, or concerning the delimitation of its frontiers or boundaries.