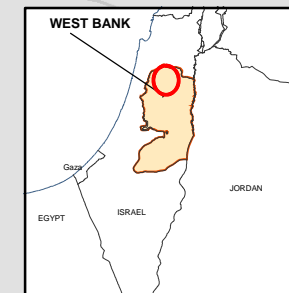


# West Bank Closures - JENIN

November 2003



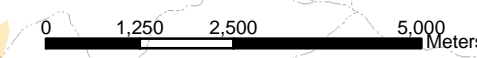
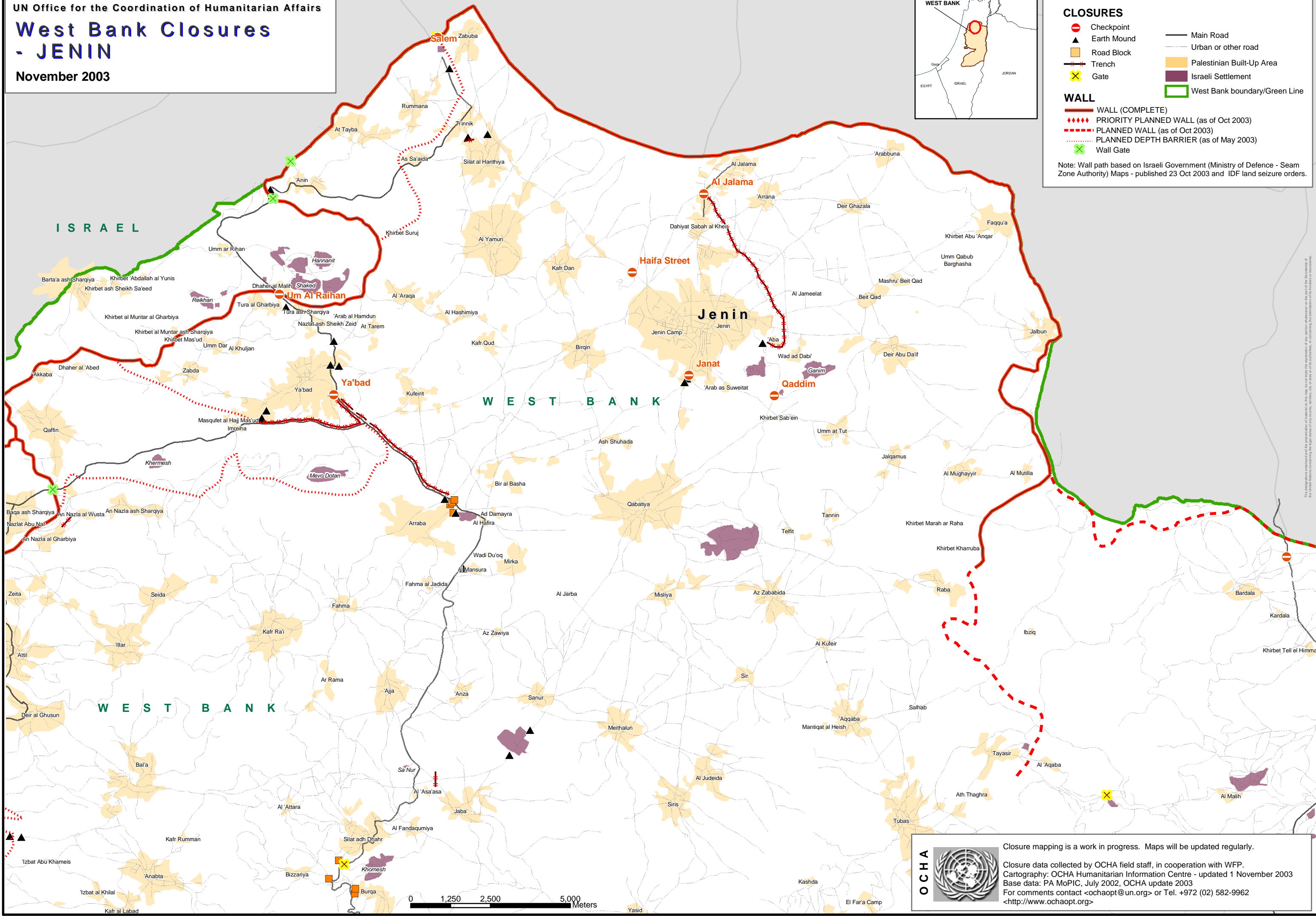
### CLOSURES

- Checkpoint
- Earth Mound
- Road Block
- Trench
- Gate
- Main Road
- Urban or other road
- Palestinian Built-Up Area
- Israeli Settlement
- West Bank boundary/Green Line

### WALL

- WALL (COMPLETE)
- PRIORITY PLANNED WALL (as of Oct 2003)
- PLANNED WALL (as of Oct 2003)
- PLANNED DEPTH BARRIER (as of May 2003)
- Wall Gate

Note: Wall path based on Israeli Government (Ministry of Defence - Seam Zone Authority) Maps - published 23 Oct 2003 and IDF land seizure orders.



Closure mapping is a work in progress. Maps will be updated regularly.

Closure data collected by OCHA field staff, in cooperation with WFP.

Cartography: OCHA Humanitarian Information Centre - updated 1 November 2003

Base data: PA MoPIC, July 2002, OCHA update 2003

For comments contact <ochaopt@un.org> or Tel. +972 (02) 582-9962

<<http://www.ochaopt.org>>