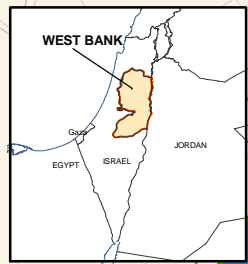


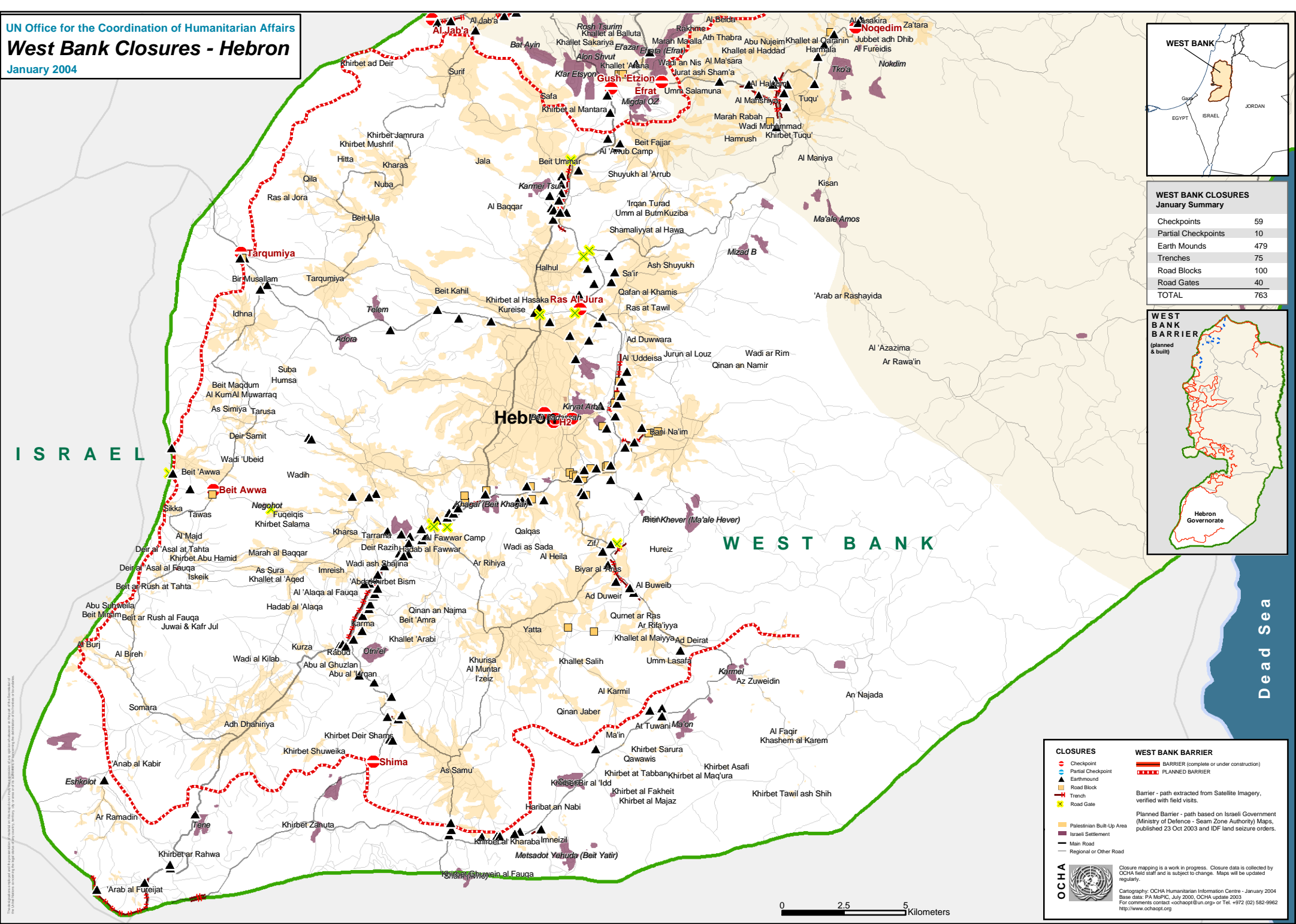
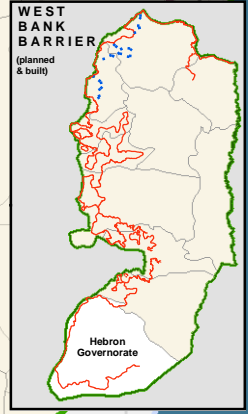
# West Bank Closures - Hebron

January 2004



**WEST BANK CLOSURES January Summary**

Checkpoints	59
Partial Checkpoints	10
Earth Mounds	479
Trenches	75
Road Blocks	100
Road Gates	40
<b>TOTAL</b>	<b>763</b>



**CLOSURES**

- Checkpoint
- Partial Checkpoint
- Earthmound
- Road Block
- Trench
- Road Gate

**WEST BANK BARRIER**

- BARRIER (complete or under construction)
- PLANNED BARRIER

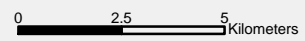
Barrier - path extracted from Satellite Imagery, verified with field visits.

Planned Barrier - path based on Israeli Government (Ministry of Defence - Seam Zone Authority) Maps, published 23 Oct 2003 and IDF land seizure orders.

**OCHA**

Closure mapping is a work in progress. Closure data is collected by OCHA field staff and is subject to change. Maps will be updated regularly.

Cartography: OCHA Humanitarian Information Centre - January 2004  
 Base data: PA MoPIC, July 2000, OCHA update 2003  
 For comments contact: ochaapi@un.org or Tel: +972 (02) 582-9962  
<http://www.ochaopt.org>



This map was prepared by OCHA using satellite imagery and other data. It is not intended to be used for navigation. OCHA is not responsible for any errors or omissions.