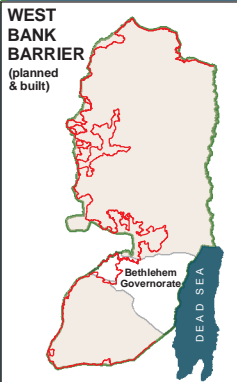
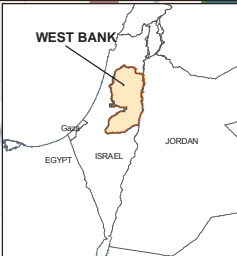
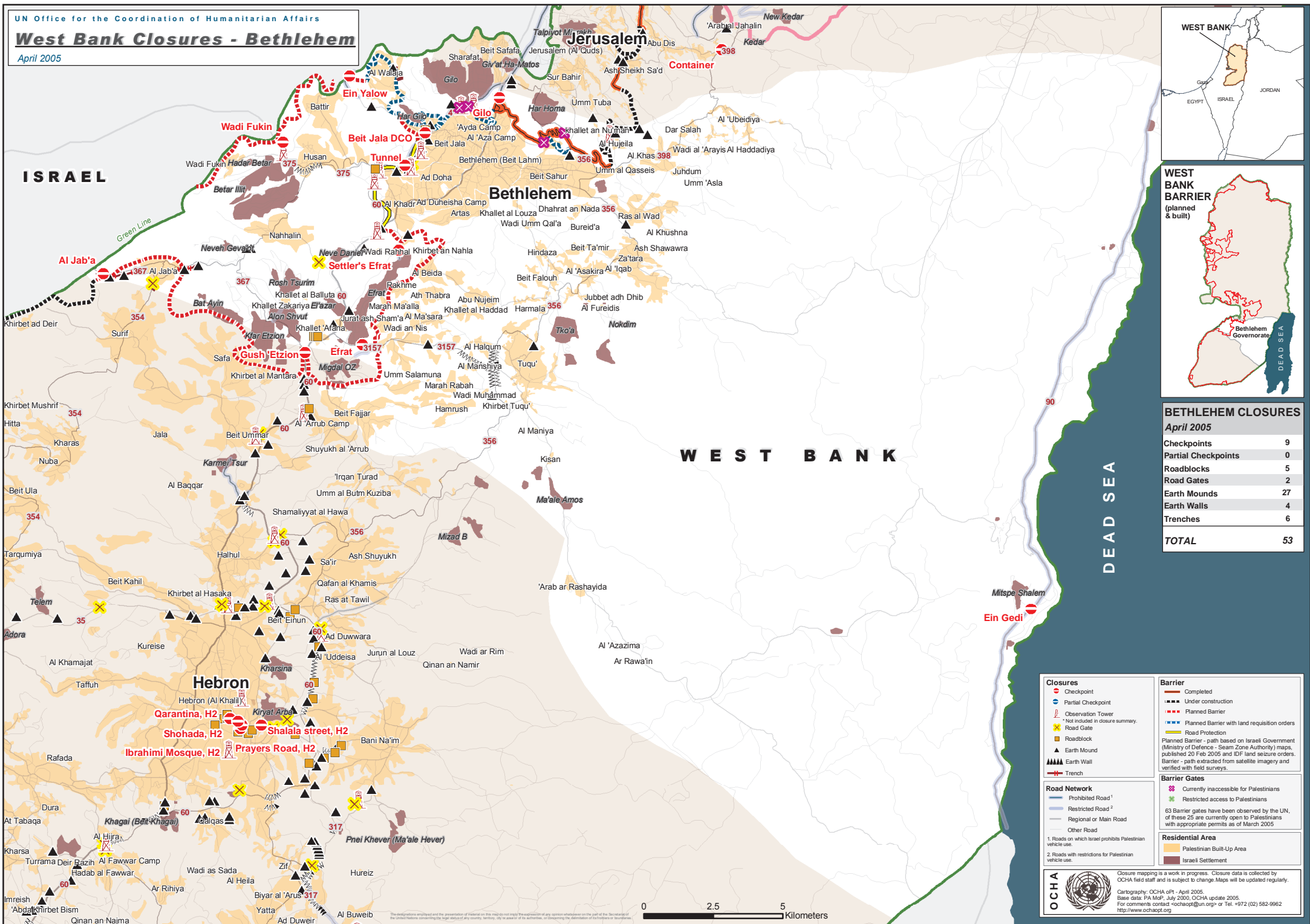


West Bank Closures - Bethlehem

April 2005



BETHLEHEM CLOSURES

April 2005

Checkpoints	9
Partial Checkpoints	0
Roadblocks	5
Road Gates	2
Earth Mounds	27
Earth Walls	4
Trenches	6
TOTAL	53

Closures

- Checkpoint
- Partial Checkpoint
- ▲ Observation Tower
- X Road Gate
- Roadblock
- ▲ Earth Mound
- ▲ Earth Wall
- Trench

Road Network

- Prohibited Road¹
- Restricted Road²
- Regional or Main Road
- Other Road

1. Roads on which Israel prohibits Palestinian vehicle use.
2. Roads with restrictions for Palestinian vehicle use.

Barrier

- Completed
- - - Under construction
- - - - Planned Barrier
- - - - Planned Barrier with land requisition orders
- Road Protection

Planned Barrier - path based on Israeli Government (Ministry of Defence - Seam Zone Authority) maps, published 20 Feb 2005 and IDF land seizure orders.
Barrier - path extracted from satellite imagery and verified with field surveys.

Barrier Gates

- X Currently inaccessible for Palestinians
- X Restricted access to Palestinians

63 Barrier gates have been observed by the UN. Of these 25 are currently open to Palestinians with appropriate permits as of March 2005

Residential Area

- Palestinian Built-Up Area
- Israel Settlement