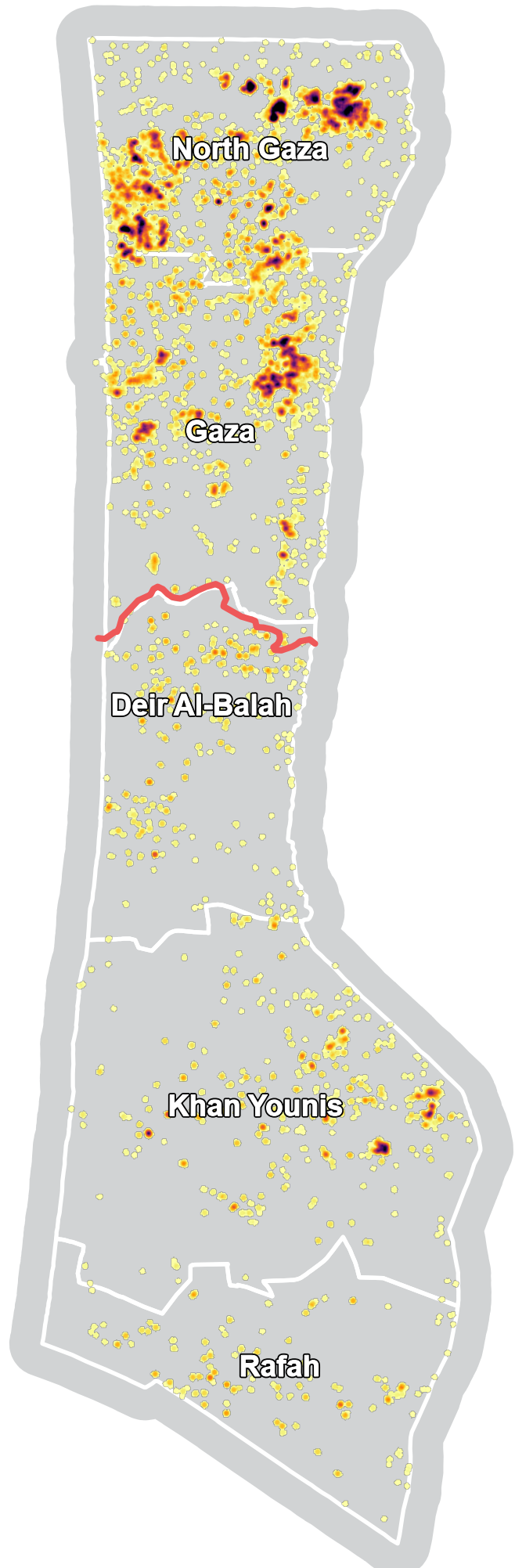


Damage Density 15 - 26 October



Legend

- Damage Density**
- High
- Low
- Evacuation line
- Governorate boundary
- Locality boundary

The map displays the density of damage in Gaza based on a rapid analysis of a satellite imagery dated October 31st. The map does not include a count of damaged buildings, and further has not been validated by observations on the ground. The density, or heat map, shown is relative to the total number of detected damage points at a single point in time, important to note when comparing damage density from different dates.

0 1 2 3 4 Kilometers

Data sources:
Damage affected areas - IMPACT / UNOSAT
Locality boundaries - REACH MSNA 2022
Evacuation line - LiveUA
Satellite imagery -
WorldView-3 from 31 October 2023 and 10 May 2023
WorldView-3 from 1 May 2023
Copyright: ©2023 Maxar/DigitalGlobe
Source: Department of State, Humanitarian Information Unit

Note: Data, designations and boundaries contained on this map are not warranted to be error-free and do not imply acceptance by partners, associates or donors mentioned on this map.